

Main Avenue Parking *Concept*

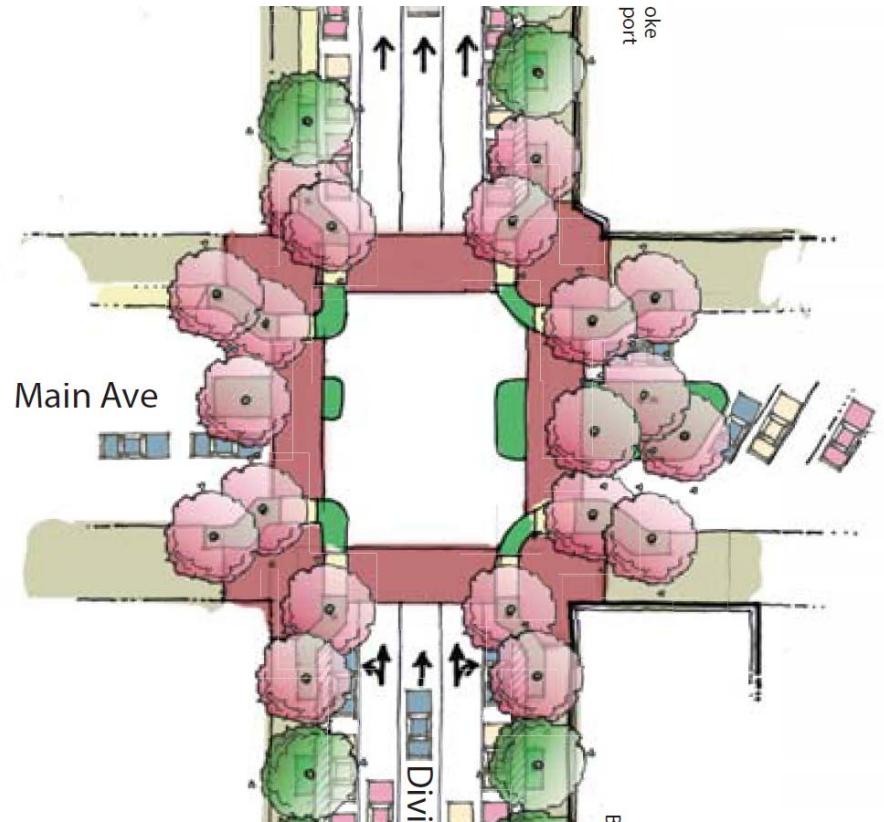


Concept came from
Gateway Study
Process from
2012 - 2013



Division Street Gateway Project Implementation

- Main and Division intersection bulb-outs
 - Advertise and Bid this fall
- Division Street – Repaving and Restriping 2017



Division Street Gateway Study showed desire for Main Ave to be Multi-function

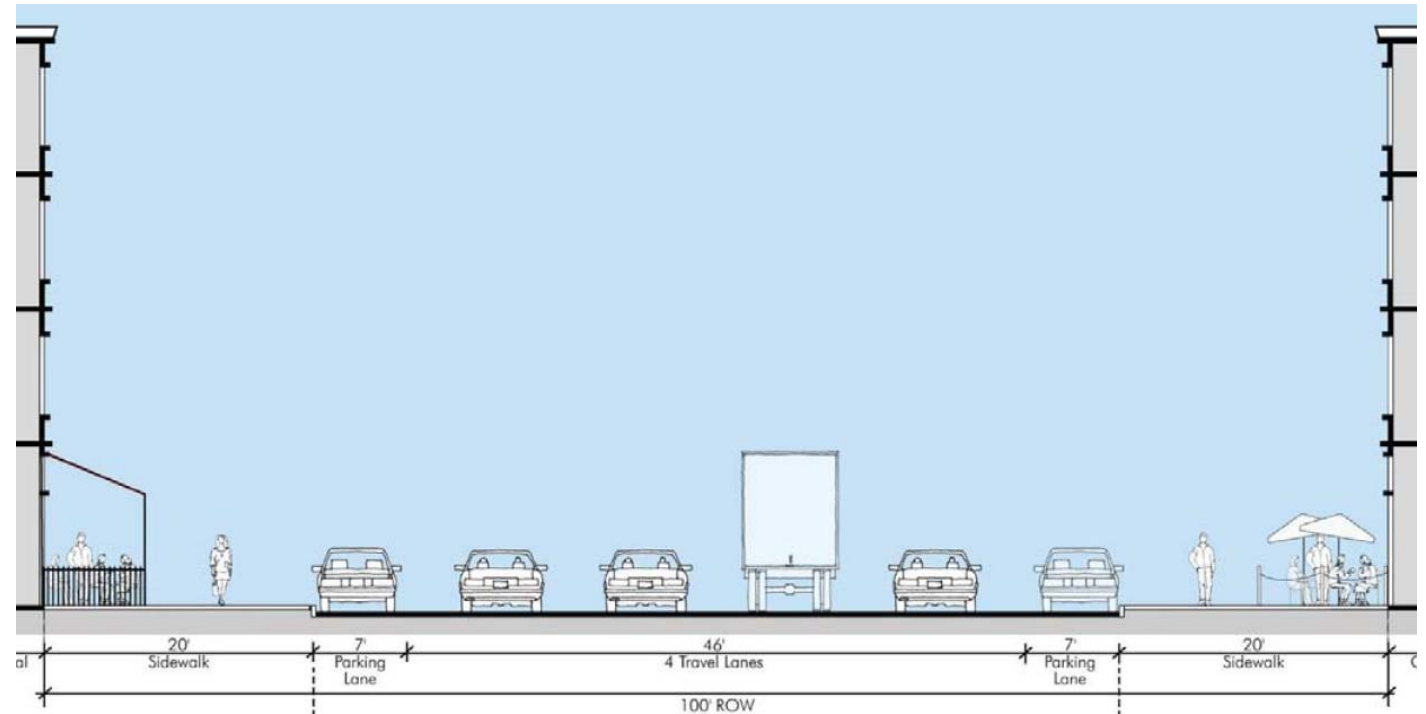
- Improve Streetscape
- Strengthen east-west connectivity
- Enhance visual image
- Improve safety for all modes
- Add Parking - Bicycle, Pedestrian, and Auto



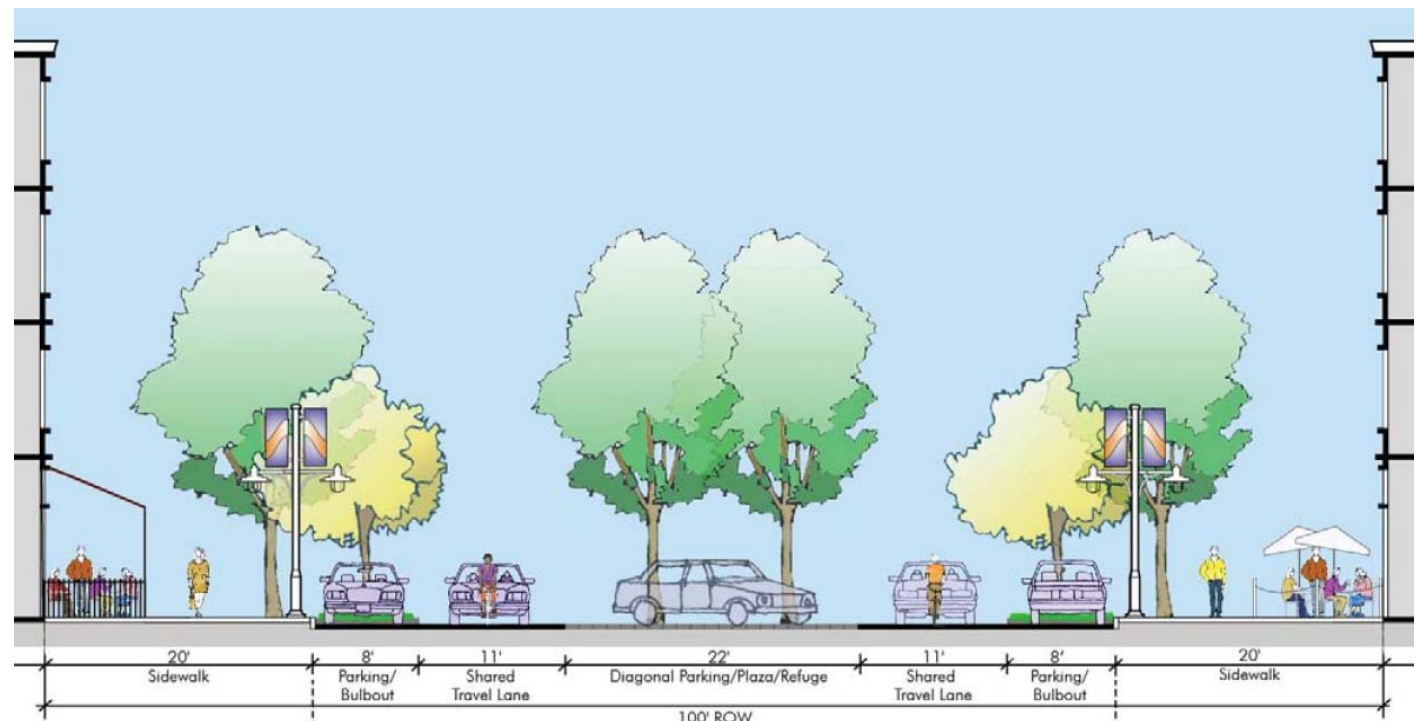
Center Additional Parking Concept from 2013



Main
Today



Original
2-Way
Concept



Main
Today



Original
2-Way
Concept



“Ramblas”
Convertible
Festivals
“Place to
Be Seen”



Current Concept

Concept Pilot Project – Maintains 1-Way Street

Does not preclude future changes

Example: Lancaster, CA – Two Way Street

– “Rambla” – Ramble / Public Space / Promenade

- Walkable place in order to ‘be seen’
- Convertible / Festival Street
- Pedestrian Oriented – Slowed Traffic – 13 to 17 MPH
- Additional Parking – “Linear Parking Lot”
- Bicycle Friendly – Slow Speed, Sharrows













W Lancaster Blvd

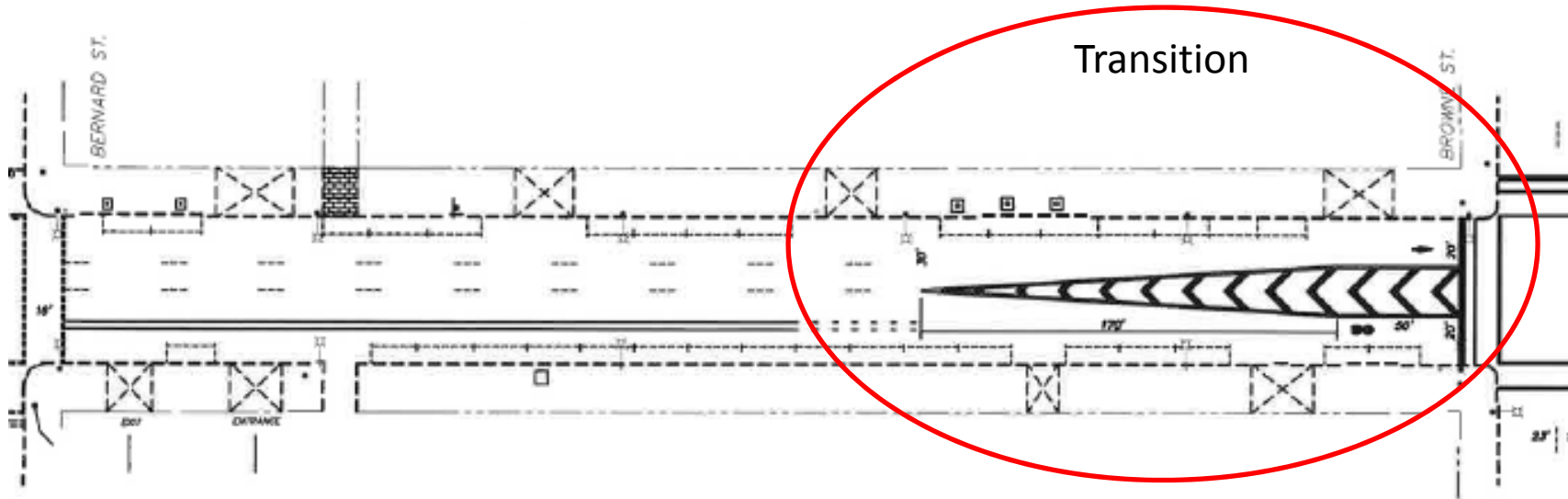


W Lancaster Blvd

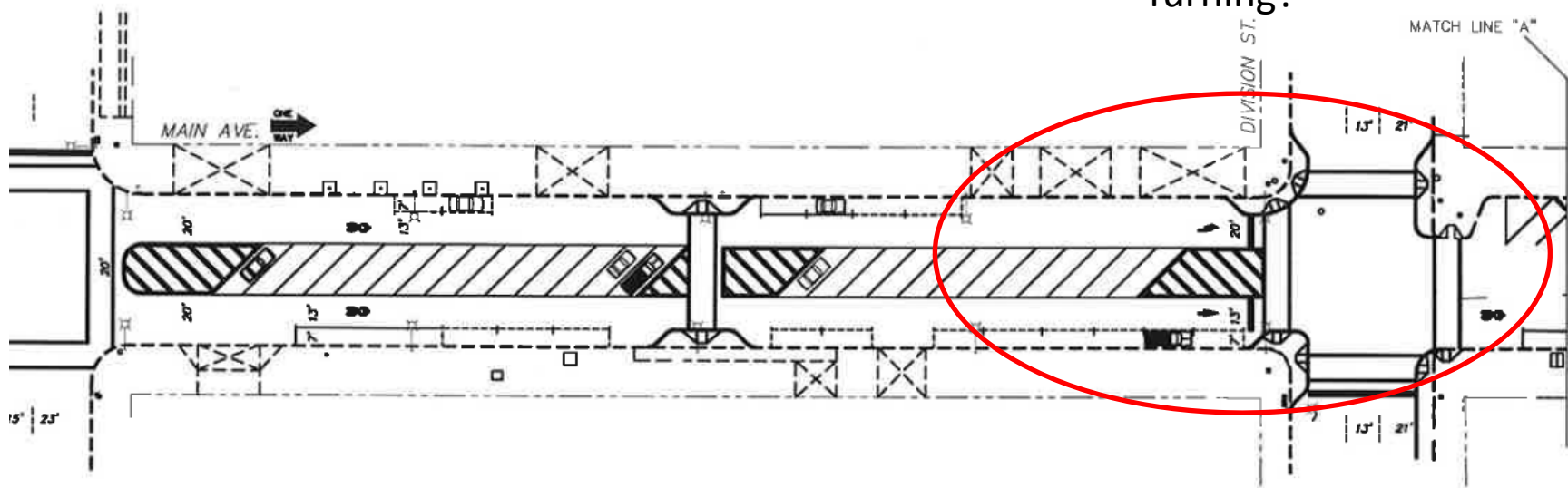


Main Parking Addition Pilot

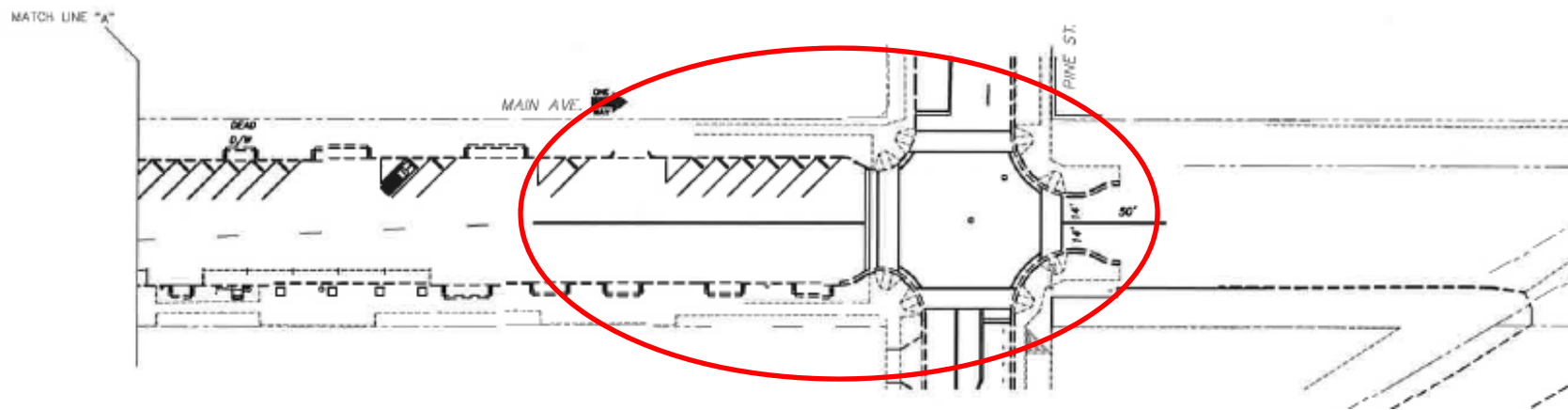
Striping, Signage, Small Scale Landscaping



Bernard to Browne



Browne to Division



Division to Pine

Planters



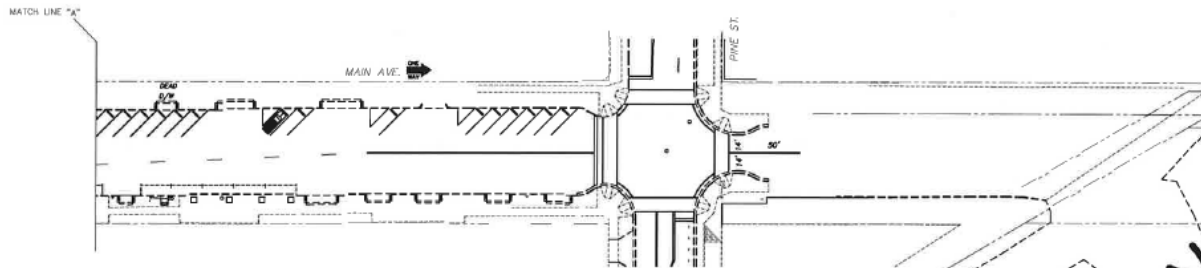
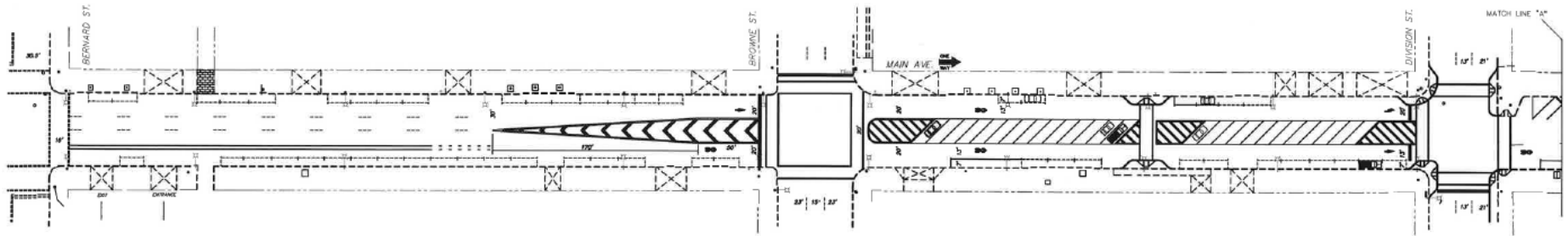
Questions received so far

- Will you be able to turn left onto Division from the far right lane of Main Avenue?
- How would pedestrian right of way work with a center parking lane?
- Can a speed bump be added to slow down traffic and ensure safety of those in the middle parking strip?
- What will the speed limit be?
- Will the loading zones remain?
- Where will trees be added near parking strip?
- Will trees be placed on both sidewalks, where existing tree locations need to be balanced?
- Will banner lighting be added across the block?
- Will there be additional trash and recycling bins added?
- In the future will Main be restored to a two way street?
- Who will be in charge of maintenance, City or business owners? (i.e. provide power to lights, change bulbs over the street, water trees, empty trash, etc.)
- Has consideration been given to managing the block if we have a major snow event?
- How much additional parking from Browne to Division, and Division to Pine?

Process Steps

- Today - Concept Development / Feedback
- Draft Design - Feedback
- Final Design – Advertise / Bid / Construct

Questions / Feedback?



CONCEPT DRAWING ONLY
NOT FOR CONSTRUCTION

More Information

- Links to Lancaster Blvd example:
- http://www.insitedevelopment.com/pdfs/BLVD_transformation_project.pdf
- <http://sdapa.org/go/lancaster-showcases-model-living-street/>
- <https://ericvery.wordpress.com/2013/01/07/lancaster-boulevard/>