



WheelShare

Lime Contract Updates: Amendment and Renewal 2026 - 2028

PIES

June 8, 2026



The City of Choice

Contract Updates

- Contract Amendment – 2026 Season:
 - Initial term: 2024 to December 2026
 - Two optional 2-year extensions
- Contract Extension – 2027/8 Seasons:
 - Will be addressed at the end of 2026
 - Would extend current amendments
- Other updates:
 - Technology Improvements



The City of Choice

Proposed Contract Amendments

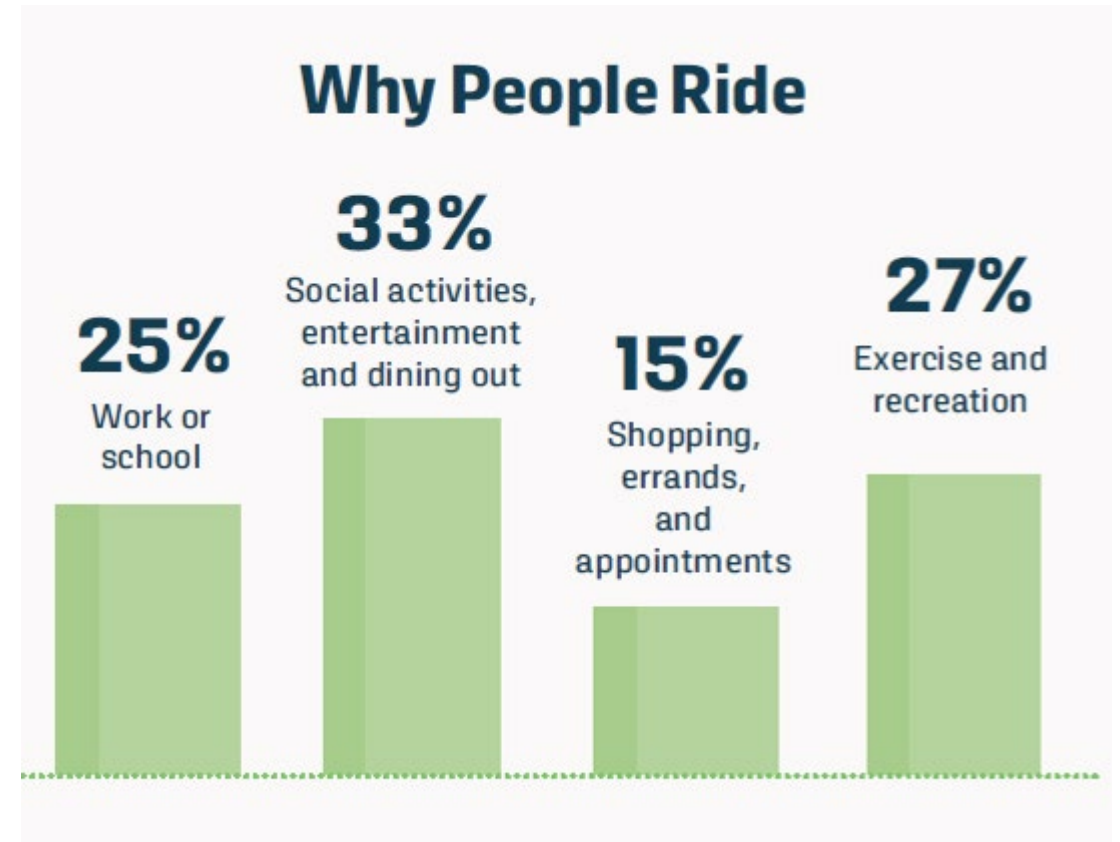
1. Lime Gliders - seated scooters, up to 250.
2. Increase of fleet cap to 2,000 devices in 2026 (up 200).
3. Winter Operations – encourage winter service by changing winter fee structure.



The City of Choice

Background

- Usage in Spokane
 - Over 2.7 million trips and 3 million miles
 - Average age of riders is 32
 - 75% of riders visit local businesses
 - 58% of trips are for commuting, shopping, errands, and dining
- Fees go to:
 - Infrastructure
 - Bike lanes, pathways and parking
 - Pathway detours
 - Education/Encouragement/Enforcement
 - Advertising, Signage, Events



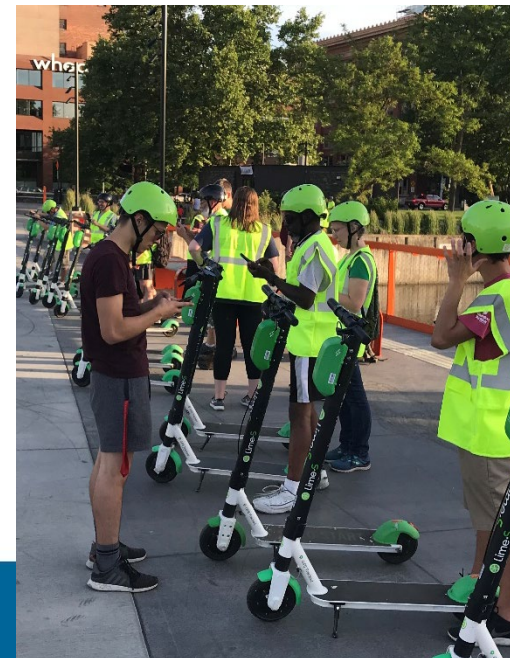
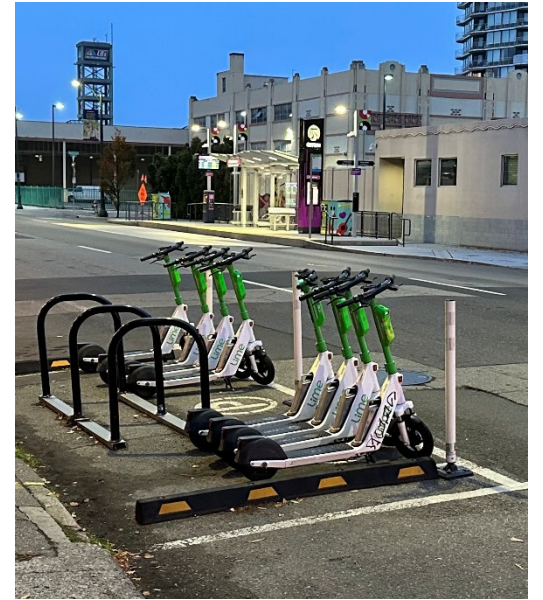
National Statistics, Source: NABSA



The City of Choice

Background

- Fees go to:
 - Infrastructure
 - Bike lanes, pathways and parking
 - Pathway detours
 - Education/Encouragement/Enforcement
 - Advertising, Signage, Events
 - Scooter Parking Management
 - Corrals and mandatory parking
 - Scooter retrieval



Winter Operations

November 15 – March 15

Lime can expand service through the winter months with a winter fee change. Currently no service is required 11/15 to 3/15.

2025-2026 Pilot Results:

- 113,828 total trips
- 558 median trips per day
- January 8 had the fewest trips of the winter: 84
- March 7 had the most trips of the winter: 2720
- Q1 2026 total trips: 63,000



The City of Choice

Enforcement

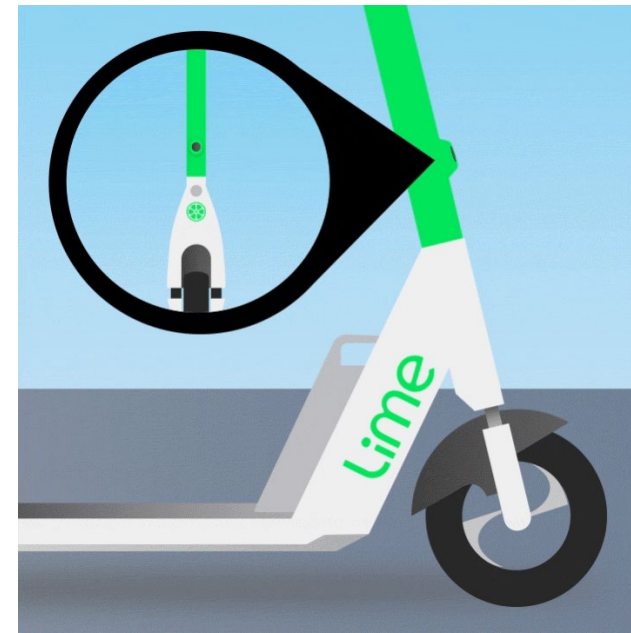
Doubled number of warnings and fines for improperly parked scooters/bikes or bad ridership.



The City of Choice

Lime Vision 2 – LV2

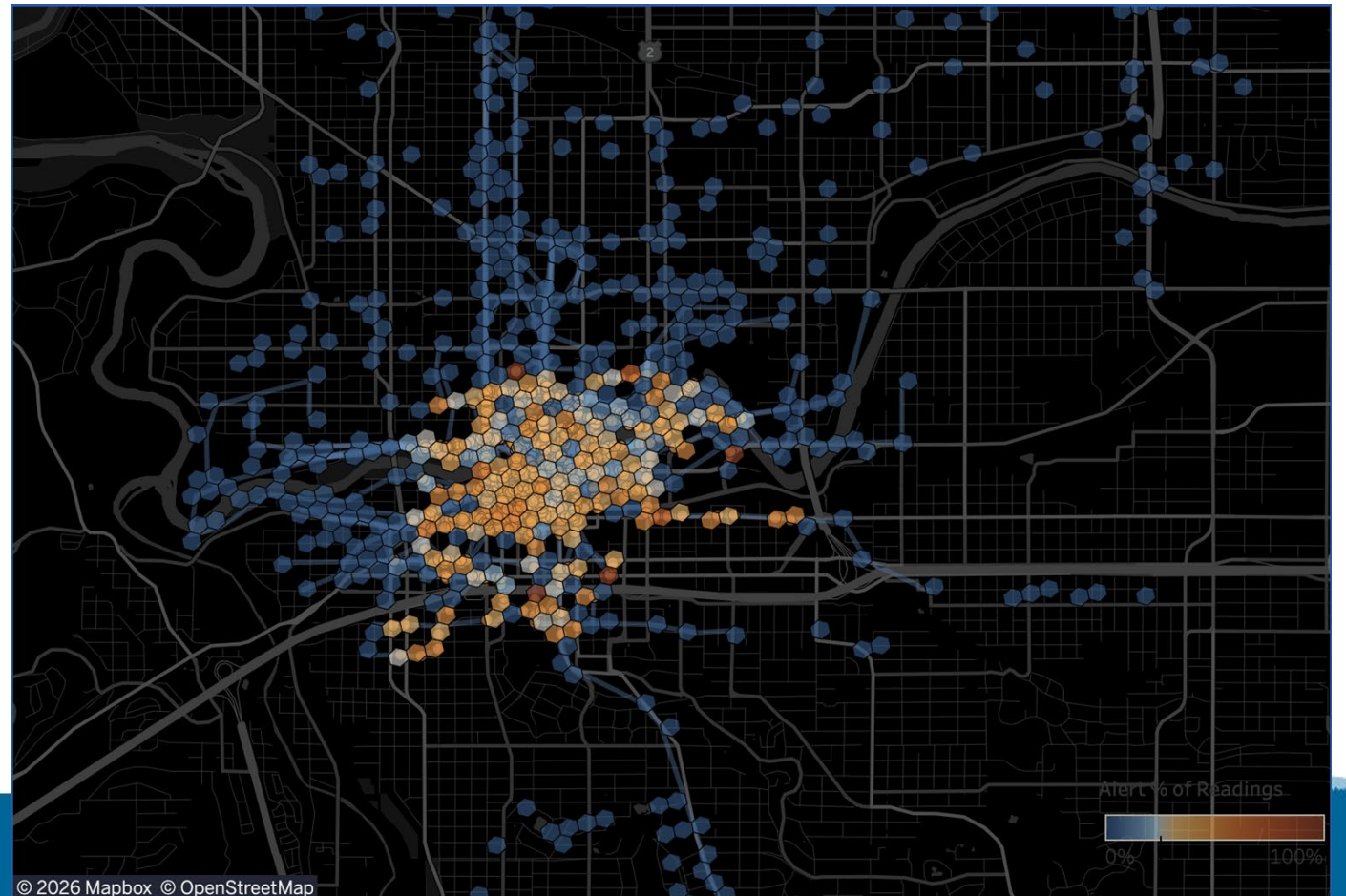
- Sidewalk riding mapping and detection technology. Current pilot in Downtown Spokane.
- Reminds users to stay off restricted sidewalks
- Expanding to 100 vehicles in 2026 and full fleet refresh in 2027.



Lime Vision Pilot Findings

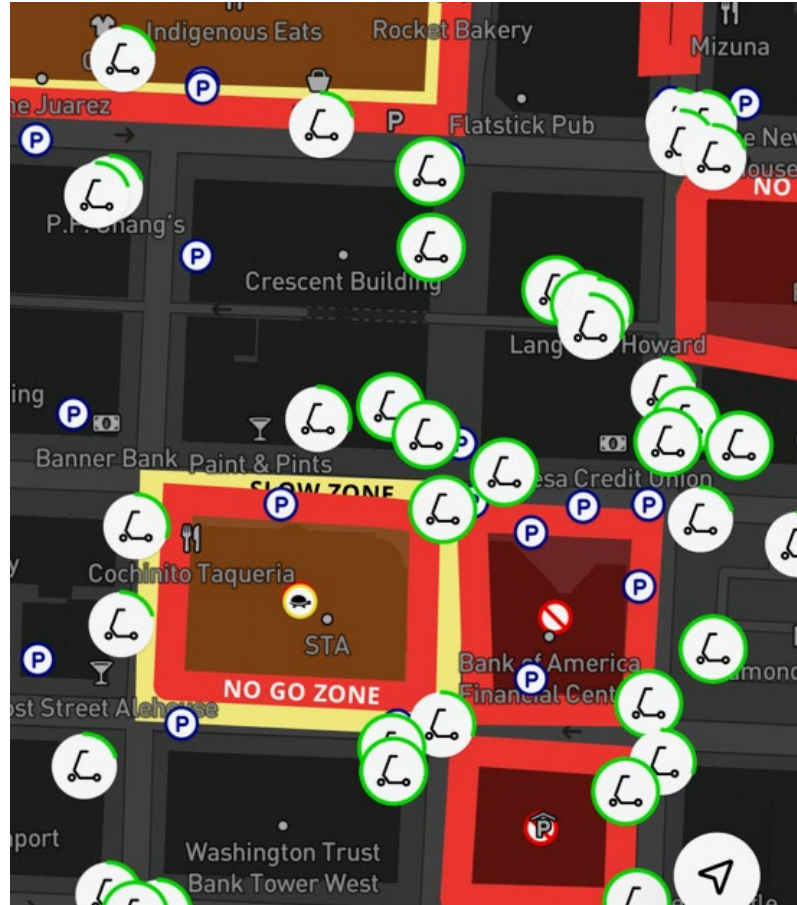
Pilot found key insights downtown and along major thoroughfares. The next step is to scale the pilot to better understand behavior across Spokane's neighborhoods.

- Sidewalk riding occurred most often on thoroughfares or downtown, where Lime riders had to compete for road space with vehicular traffic.



Mandatory Parking Zones and Enforcement

- Mandatory parking zones throughout downtown only allow parking in specified locations with sufficient parking space.
- Warnings and fines doubled between 2024 and 2025, consistent with new contract requirements adopted in 2024.





Questions & Discussion



The City of Choice

