



# Traffic Calming Cycle 14 Quick Build

Presented by Dan Buller  
June 8, 2026





# Pedestrian Focus

## Ash St.

### Ash Street from Francis to Wellesley

- Add edge line striping on both sides to delineate an 11' travel lane. Adjust signing as needed to denote no parking or stop areas.







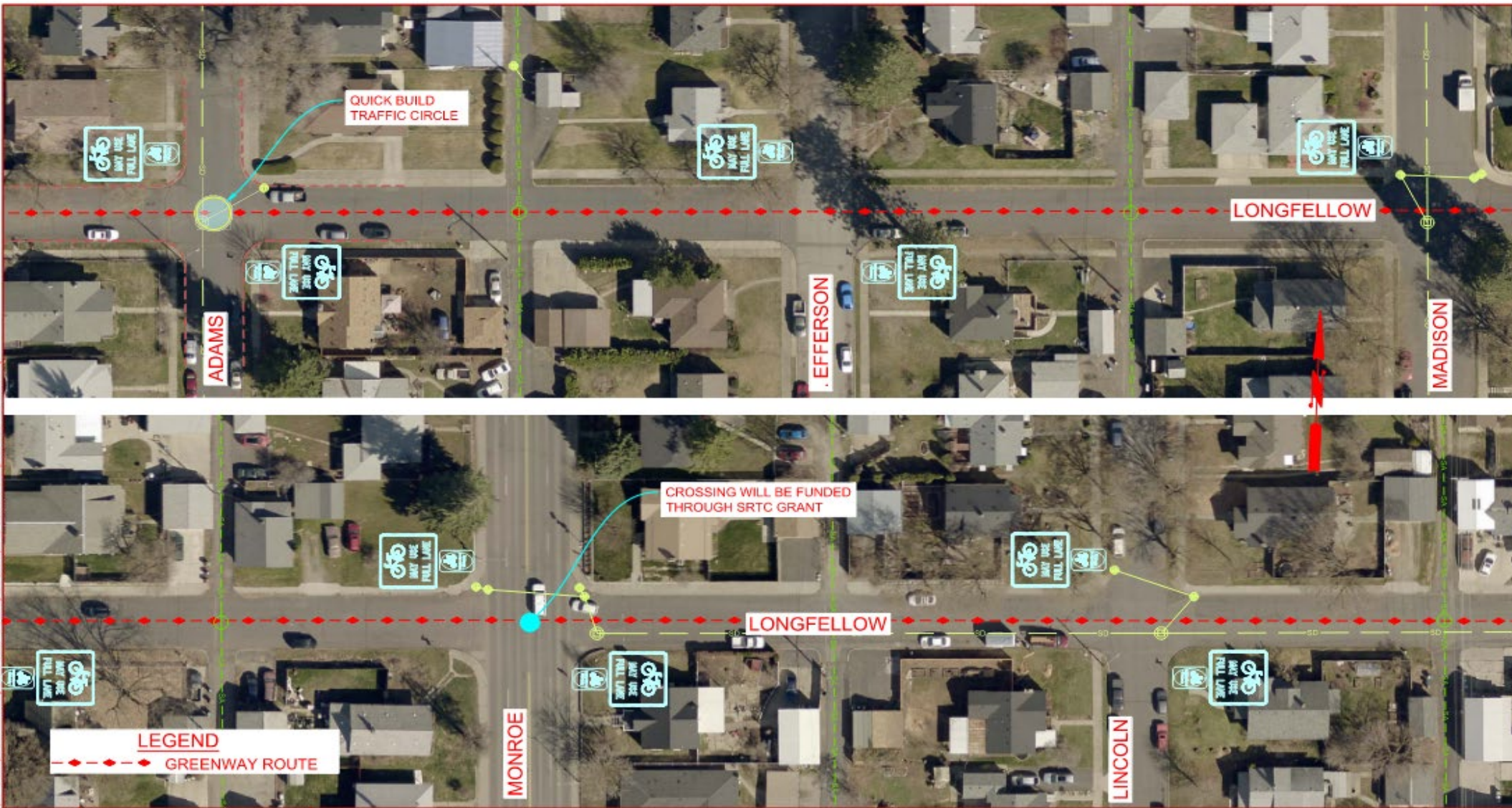
# Pedestrian Focus

## Longfellow-Rich St.

### Longfellow-Rich from Driscoll to Market

- Add standard Neighborhood Greenway signs and sharrows along the route
- Longfellow/Cedar install Quick-Build traffic circle.
- Longfellow/Adams install Quick-Build traffic circle.
- At Longfellow/Washing install Quick-Build traffic circle
- Rich/Pittsburg install Quick Build traffic circle







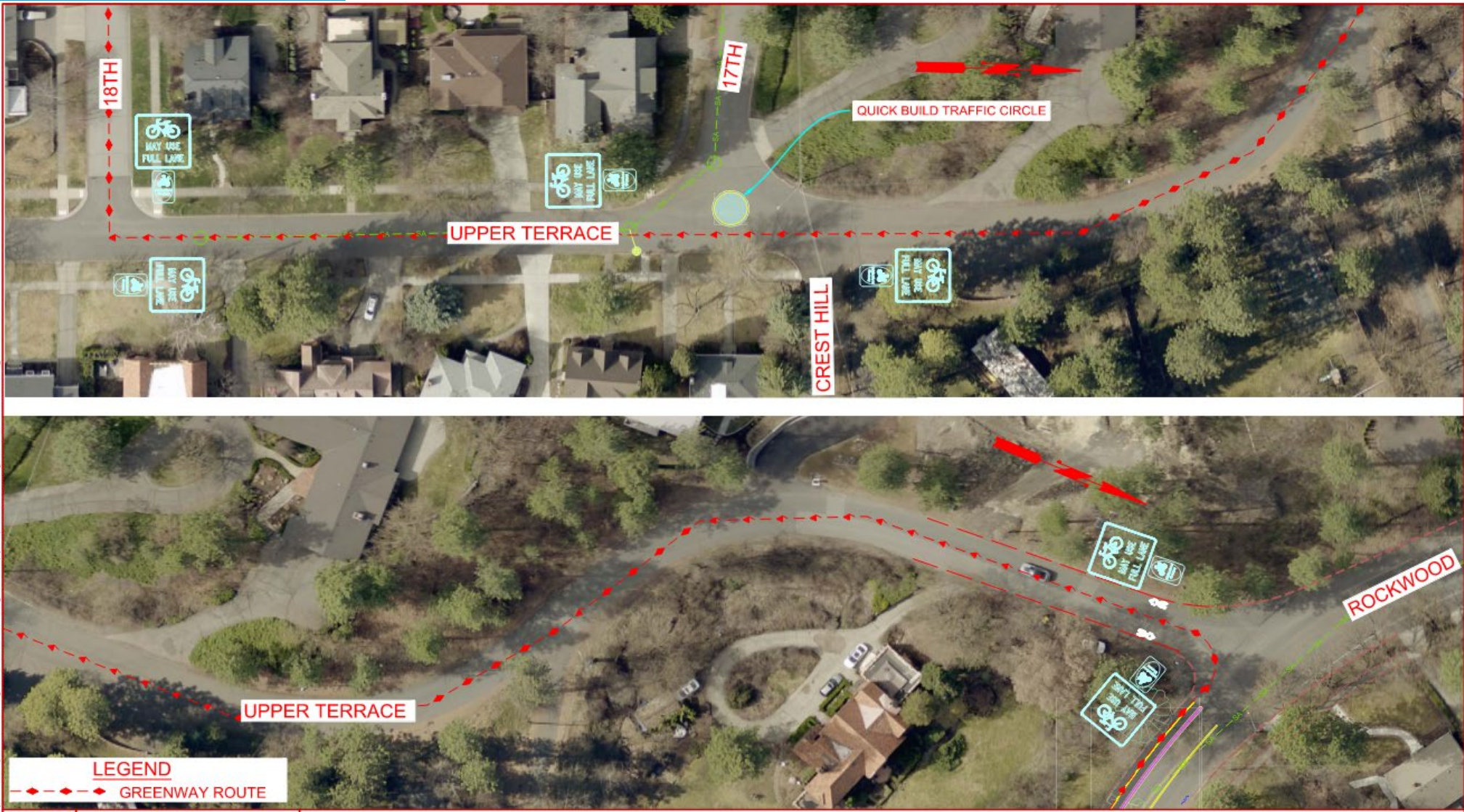
# Pedestrian Focus

## Hatch St, Upper Terrace

### Hatch Street from 27<sup>th</sup> to 18<sup>th</sup>, Upper Terrace from 18<sup>th</sup> to 17<sup>th</sup>

- Add standard Neighborhood Greenway signs and sharrows along the route
- Add a Quick-Build traffic circle at 17<sup>th</sup>/Upper Terrace







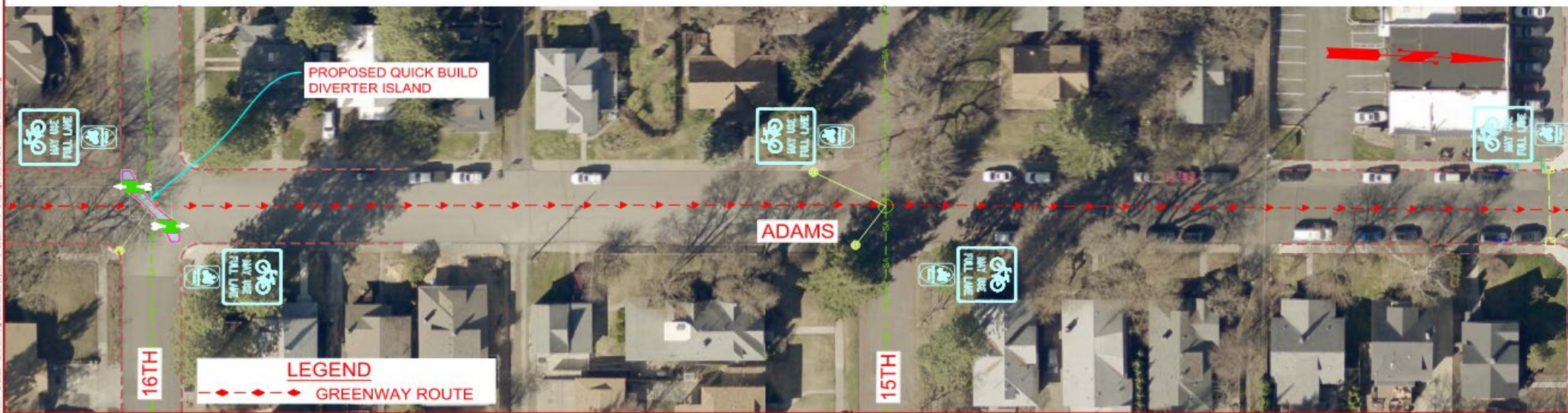
# Pedestrian Focus

## Adams-Jefferson Ave.

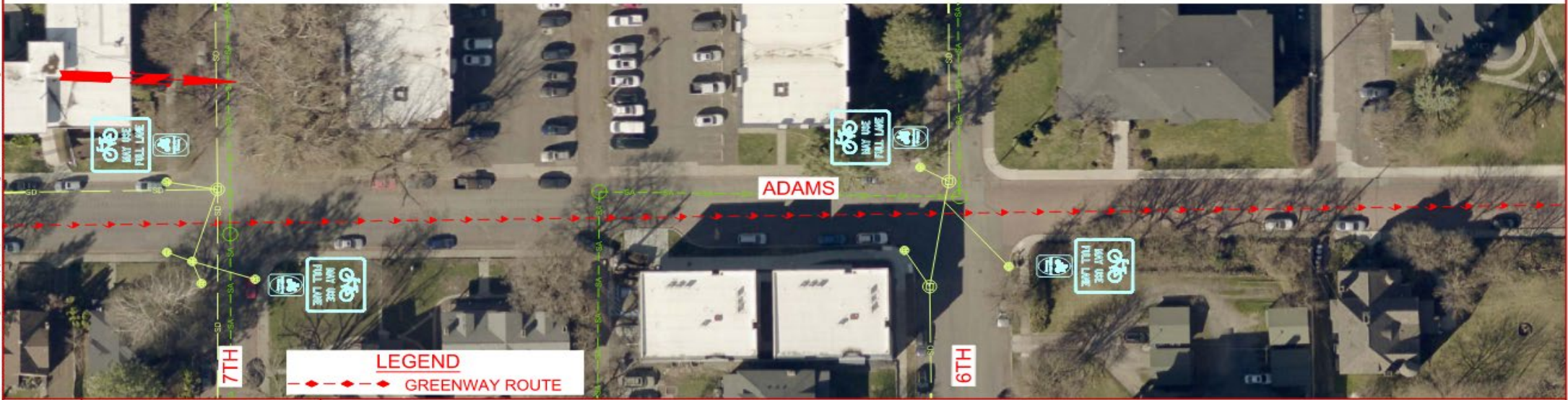
### Adams-Jefferson Avenue from 5<sup>th</sup> to 27<sup>th</sup>

- Add standard Neighborhood Greenway signs and sharrows along the route
- Quick Build traffic circle at 9<sup>th</sup> / Adams using rubber curbs, gravel fill, cold mix and signage.
- Candle bumpout on NE corner of 14<sup>th</sup> / Adams (STA stop has moved) and add green crossbike markings, crosswalk on the west leg
- Diagonal diverter at 16<sup>th</sup> / Adams using the rubber curbs, cold mix and signage (like the quick build traffic circle)











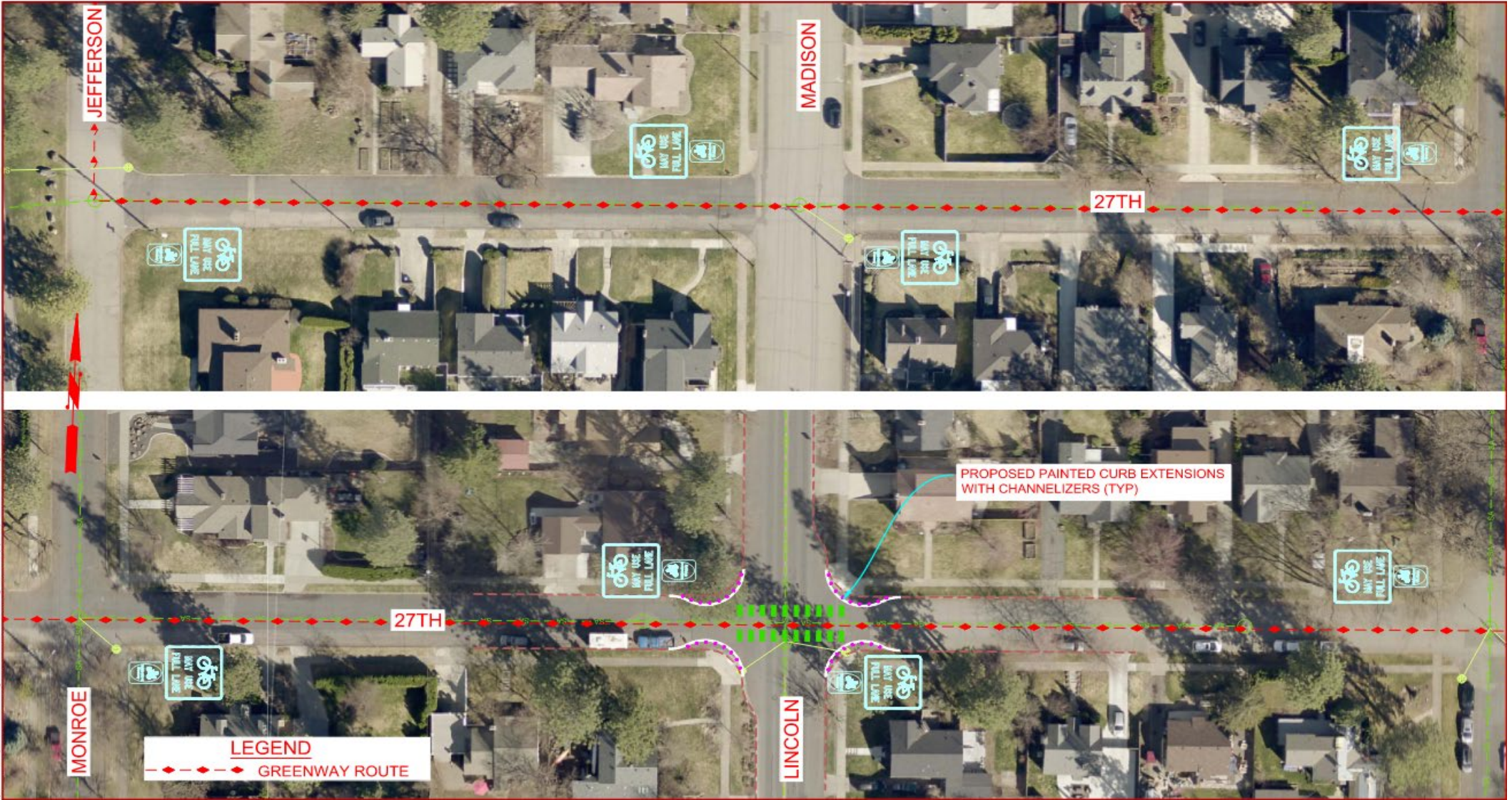
# Pedestrian Focus

## 27th Ave.

### 27<sup>th</sup> Avenue from Jefferson to Hatch

- Add standard Neighborhood Greenway signs and sharrows along the route
- Add candle bumpouts and green crossbike markings at Lincoln / 27<sup>th</sup>
- Show a Quick Build traffic circle at 27<sup>th</sup> / Wall (photo on next slide)
- 27<sup>th</sup> / Bernard add green crossbike markings
- Quick Build traffic circle at 27<sup>th</sup> / Tekoa

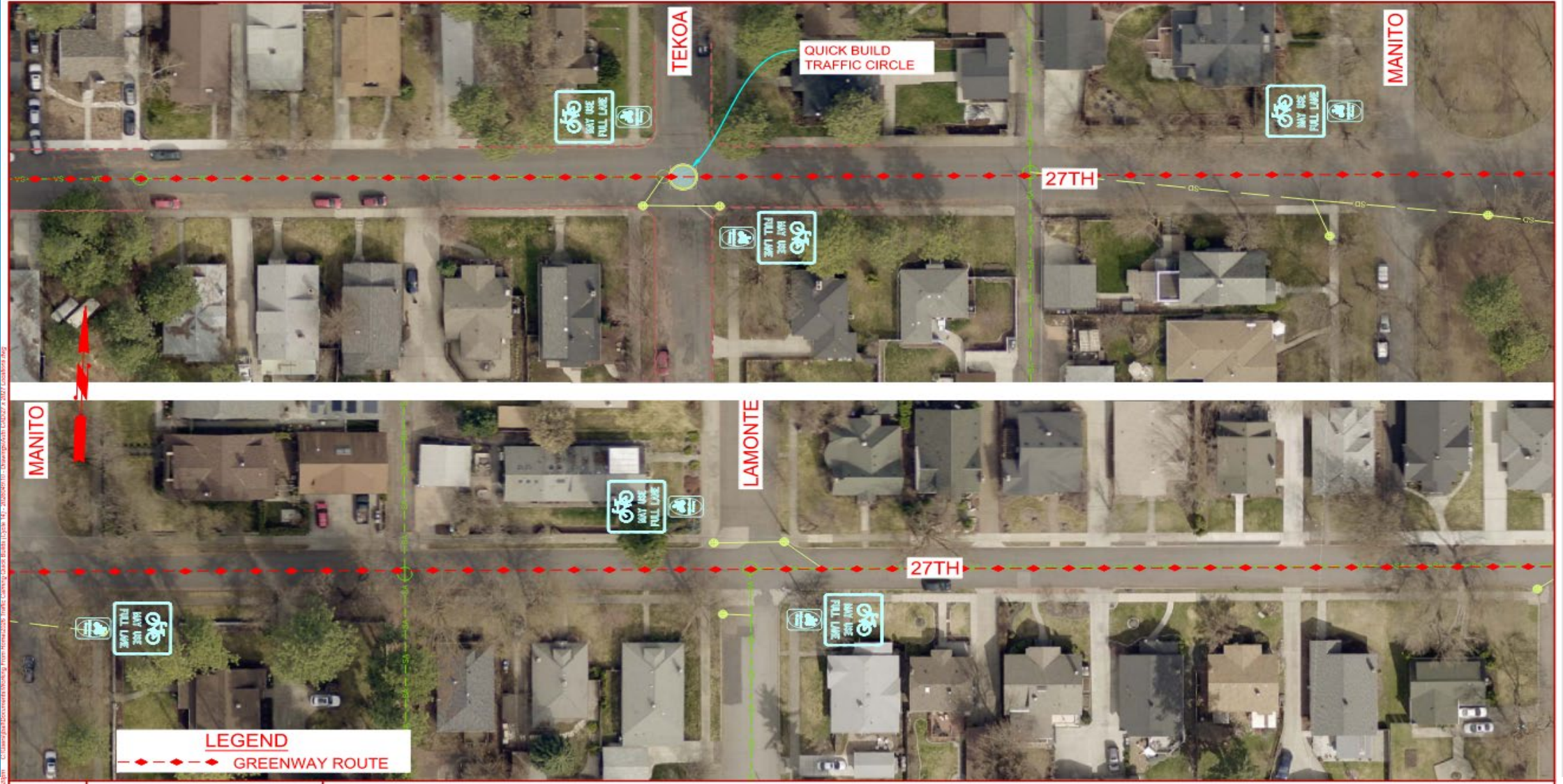




**LEGEND**  
 - - - - - GREENWAY ROUTE

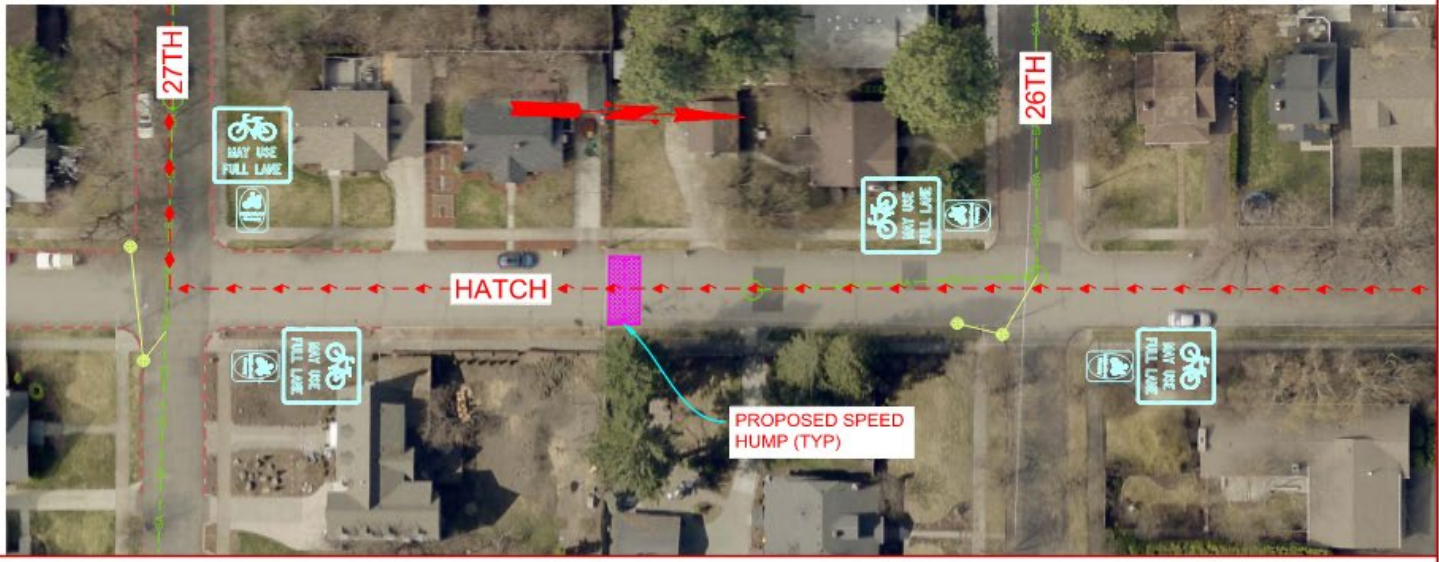
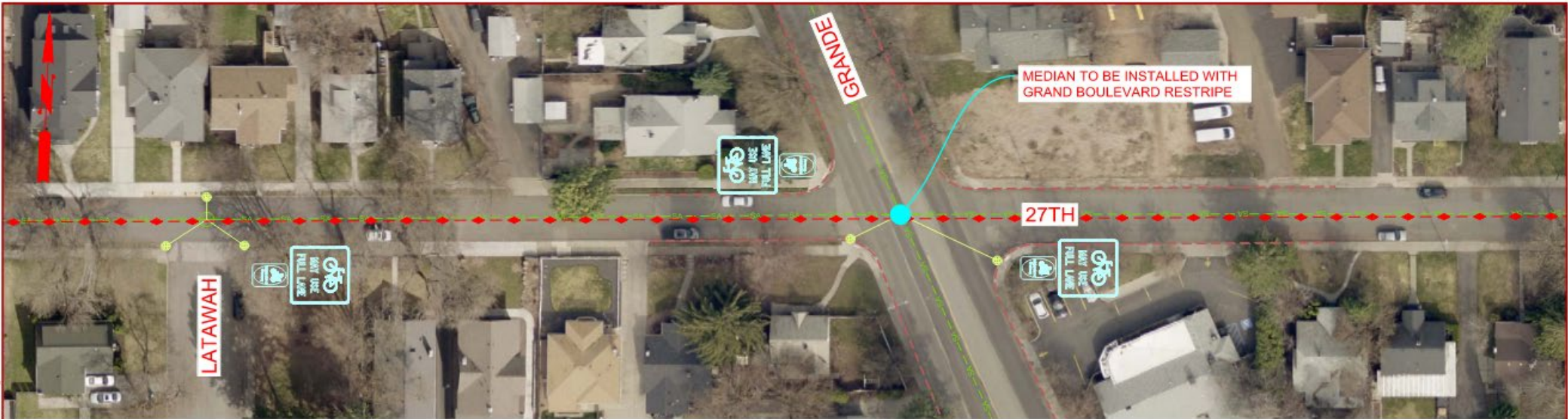
PROPOSED PAINTED CURB EXTENSIONS WITH CHANNELIZERS (TYP)





**LEGEND**  
 - - - - - GREENWAY ROUTE

SPK121 - Citywide plan documents including: Airway, Homebased, Parks, Streets, and Urban. Source: Aerial Imagery: © 2012 Google Earth. Map: © 2012 City of Spokane. All rights reserved.



**LEGEND**  
 - - - GREENWAY ROUTE



# Austin Rd.





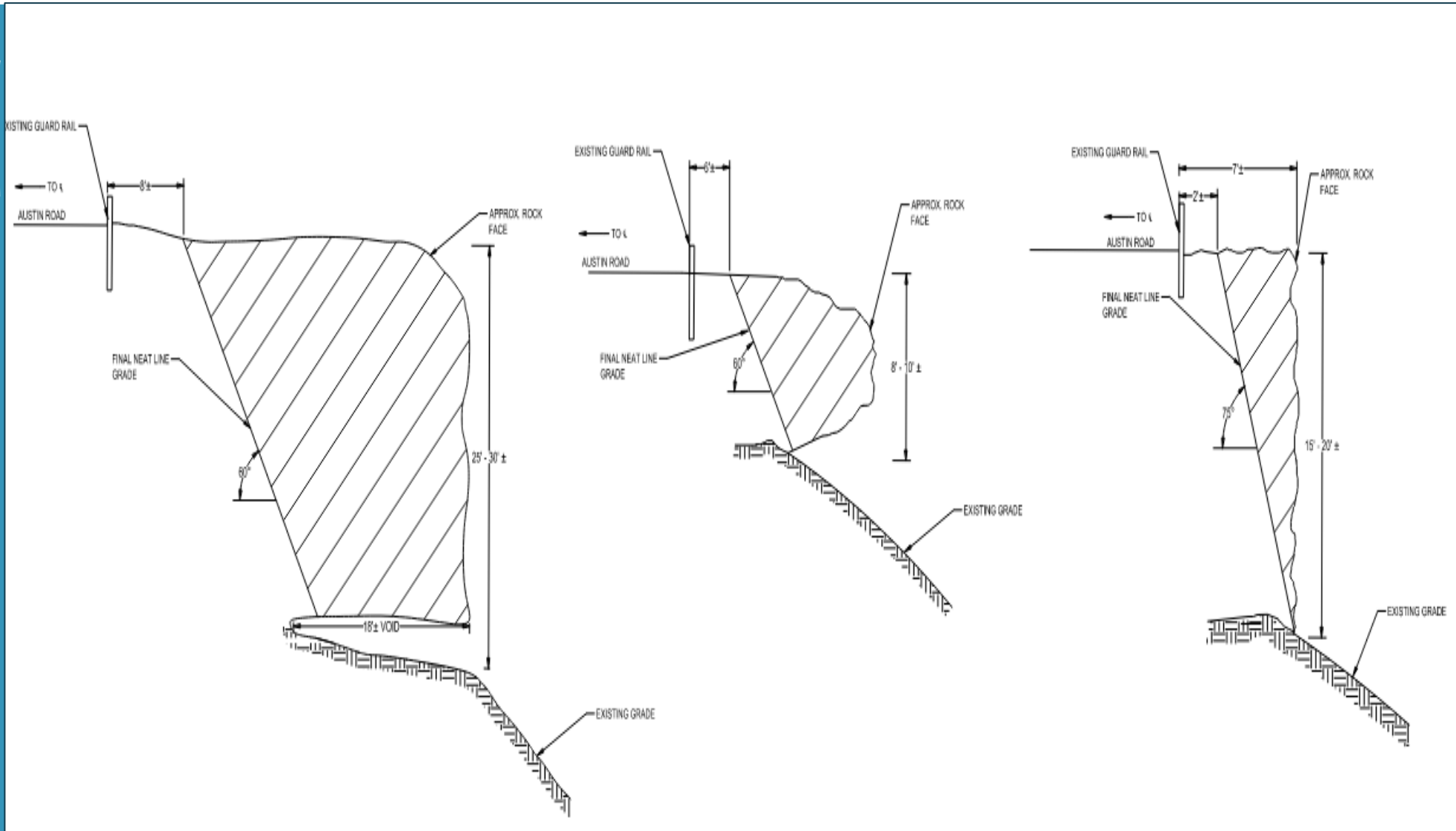
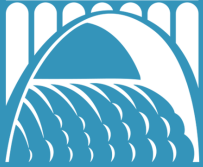




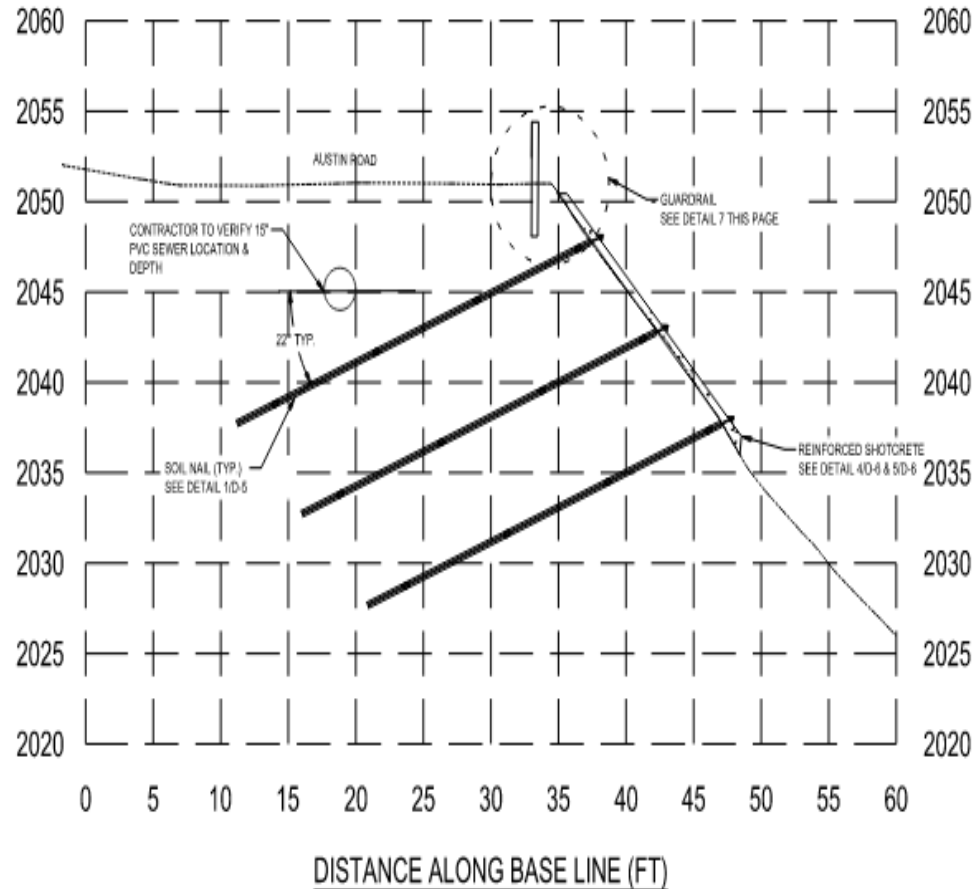








ELEVATION



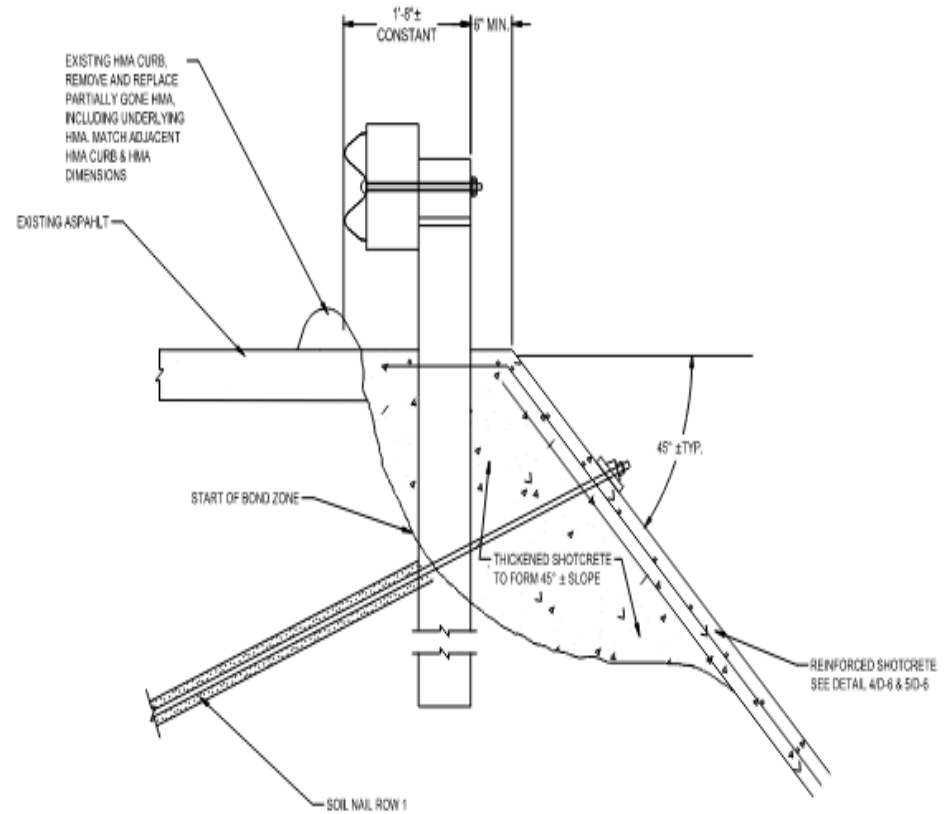
6

SOIL NAIL REINFORCED SLOPE

TYPICAL SECTION

SCALE: 1" = 10'

ELEVATION



7

GUARDRAIL DETAIL

TYPICAL SECTION

SCALE: NTS