



WheelShare

# Lime Contract Updates: Amendment and Renewal 2026 - 2028

Transportation Commission

June 17, 2026



*The City of Choice*

# Contract Updates

- Contract Amendment – 2026 Season:
  - Initial term: 2024 to December 2026
  - Allow changes to go into effect this summer
- Contract Extension – 2027/8 Seasons:
  - Two optional 2-year extensions
  - Will be addressed at the end of 2026
  - Would extend current amendments
- Other updates:
  - Technology Improvements – Battery improvements for the fleet



# Proposed Contract Amendments

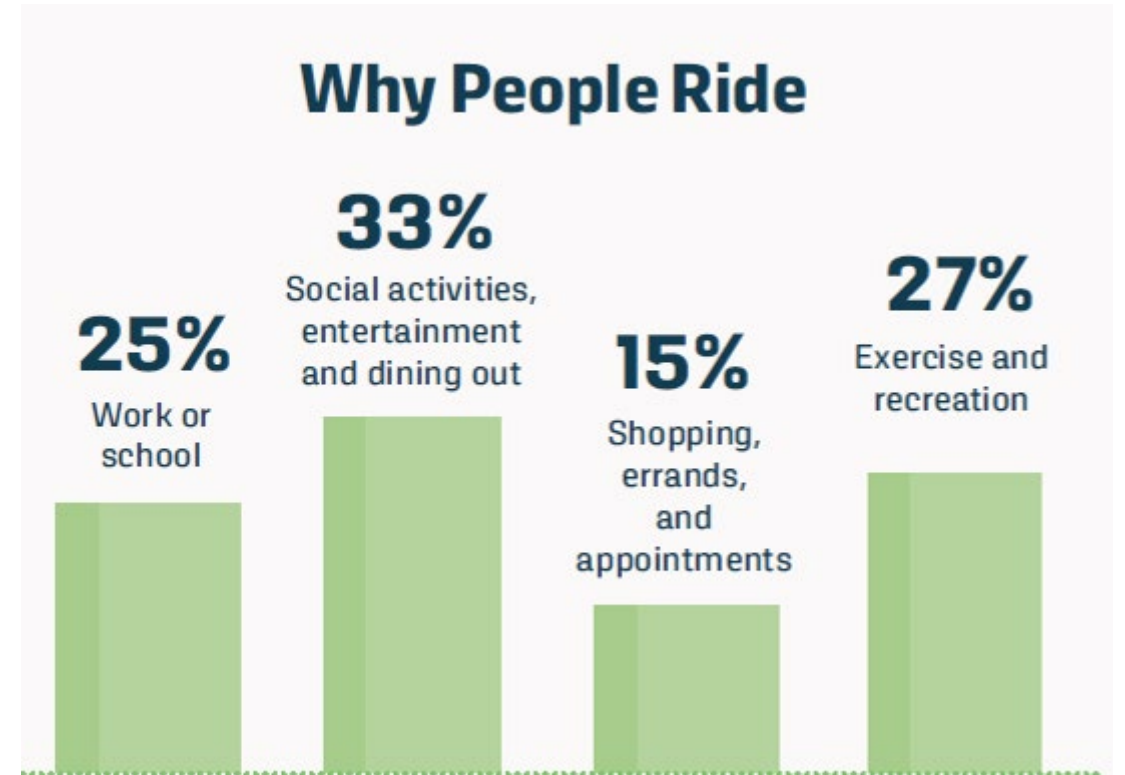
1. Lime Gliders - seated scooters, up to 25 in '26 and 250 in '27.
2. Increase of fleet cap to 2,000 devices in 2026 (up 200).
3. Winter Operations – encourage winter service by changing winter fee structure.



The City of Choice

# Background

- Usage in Spokane
  - Over 2.7 million trips and 3 million miles
  - Average age of riders is 32
  - 75% of riders visit local businesses
  - 58% of trips are for commuting, shopping, errands, and dining
- Fees go to:
  - Infrastructure
    - Bike lanes, pathways and parking
    - Pathway detours
  - Education/Encouragement/Enforcement
    - Advertising, Signage, Events



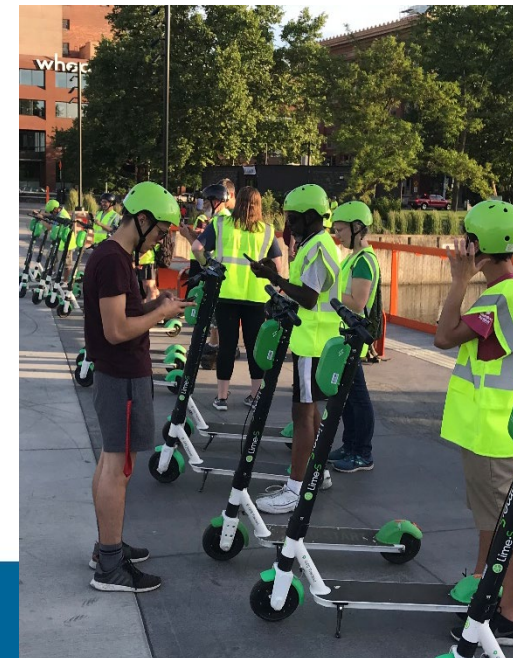
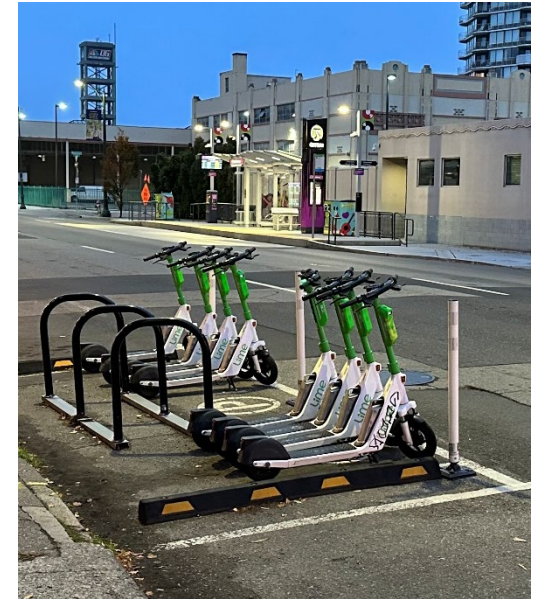
National Statistics, Source: NABSA



The City of Choice

# Background

- Fees go to:
  - Infrastructure
    - Bike lanes, pathways and parking
    - Pathway detours
  - Education/Encouragement/Enforcement
    - Advertising, Signage, Events
  - Scooter Parking Management
    - Corrals and mandatory parking
    - Scooter retrieval



The City of Choice

# Winter Operations

November 15 – March 15

Lime can expand service through the winter months with a winter fee change. Currently no service is required 11/15 to 3/15.

## 2025-2026 Pilot Results:

- 113,828 total trips
- 558 median trips per day
- January 8 had the fewest trips of the winter: 84
- March 7 had the most trips of the winter: 2720
- Q1 2026 total trips: 63,000



The City of Choice

# Enforcement

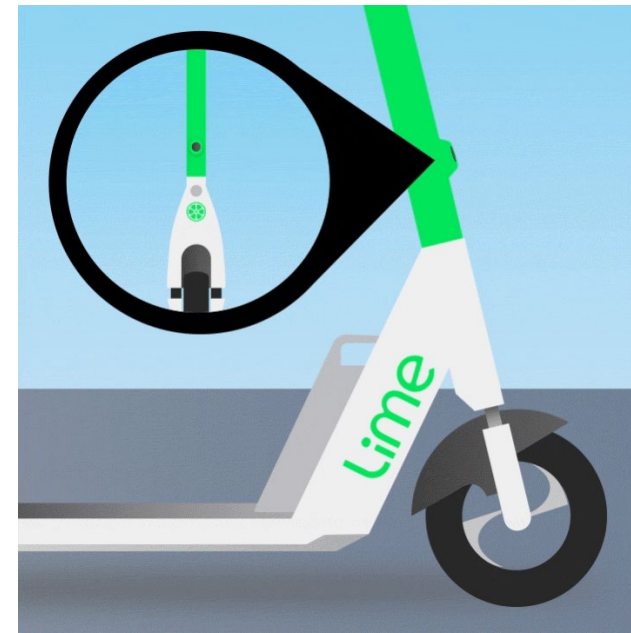
Doubled number of warnings and fines for improperly parked scooters/bikes or bad ridership.



The City of Choice

# Lime Vision 2 – LV2

- Sidewalk riding mapping and detection technology. Current pilot in Downtown Spokane.
- Reminds users to stay off restricted sidewalks
- Expanding to 100 vehicles in 2026 and full fleet refresh in 2027.

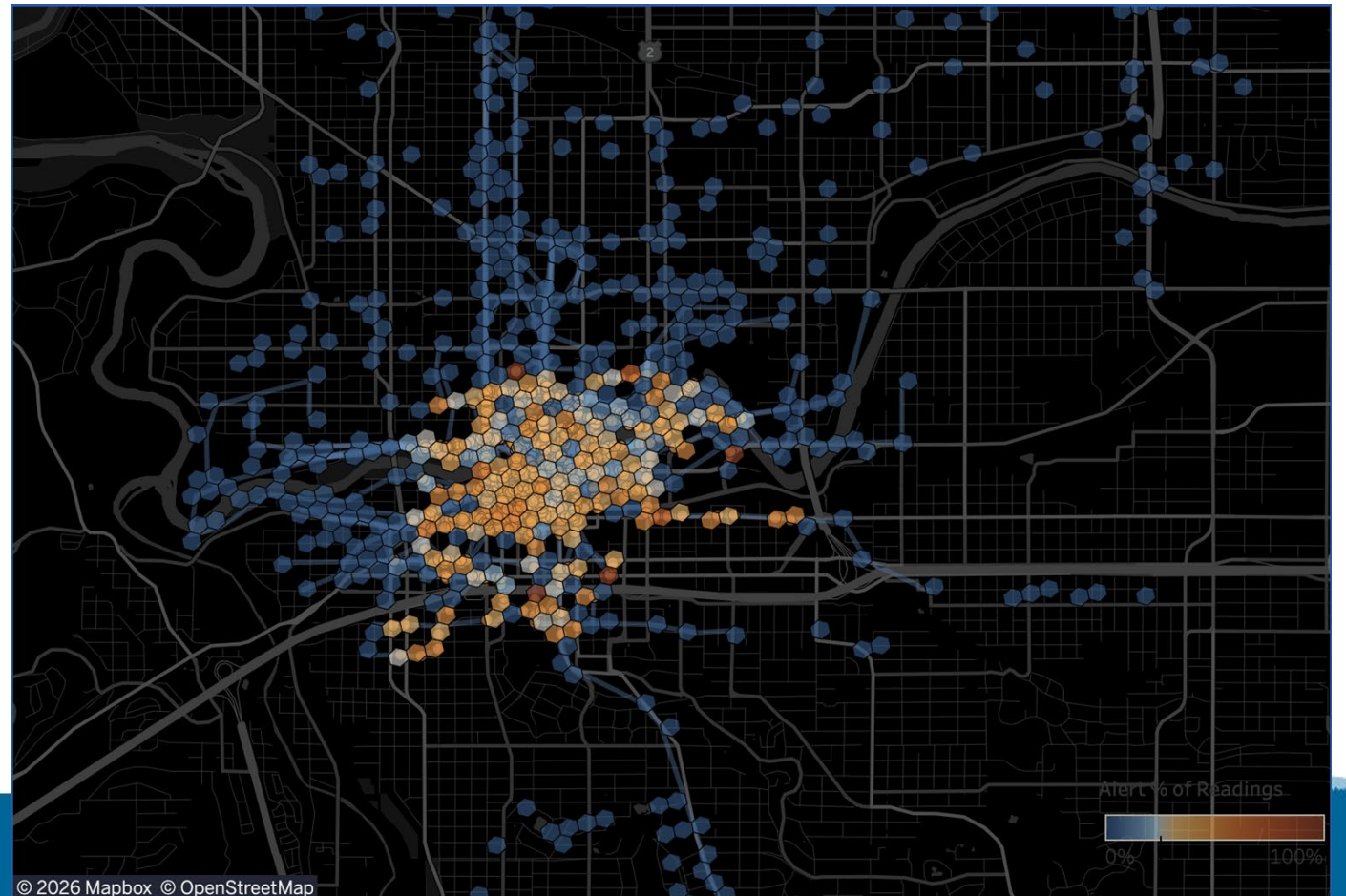


The City of Choice

# Lime Vision Pilot Findings

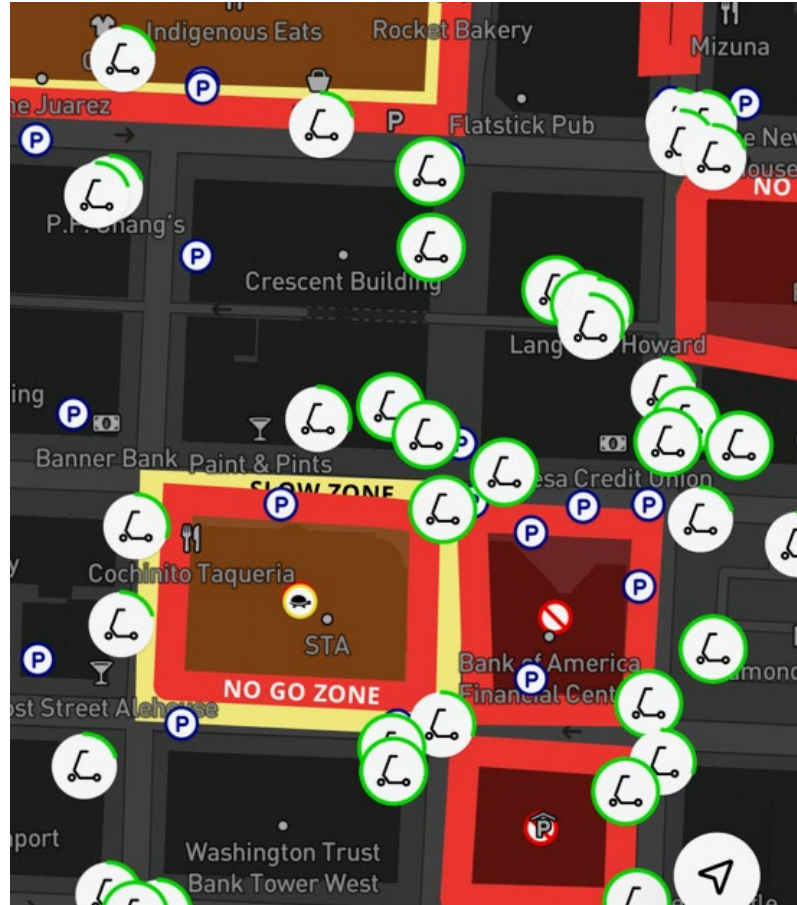
Pilot found key insights downtown and along major thoroughfares. The next step is to scale the pilot to better understand behavior across Spokane's neighborhoods.

- Sidewalk riding occurred most often on thoroughfares or downtown, where Lime riders had to compete for road space with vehicular traffic.



# Mandatory Parking Zones and Enforcement

- Mandatory parking zones throughout downtown only allow parking in specified locations with sufficient parking space.
- Warnings and fines doubled between 2024 and 2025, consistent with new contract requirements adopted in 2024.





# Questions & Discussion



*The City of Choice*

