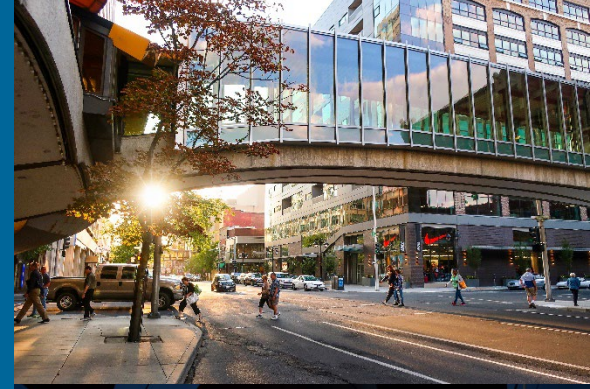




Presented to:
Transportation Commission
May 20, 2026

Cycle 15 Safe Streets For All Traffic Calming Projects Selected for Scoping

Nicole White
Abigail Martin





Cycle 15 Timeline

April – 30 projects selected for further scoping and design by DOWL Consulting

April – August – Consultant scoping projects

September – Candidate projects for Cycle 15 funding presented to Transportation Commission

October – Narrowed list presented to Transportation Commission

November – Transportation Commission makes final recommendation to Council

December – Council votes on Cycle 15 projects and budget



Projects Selected for Scoping

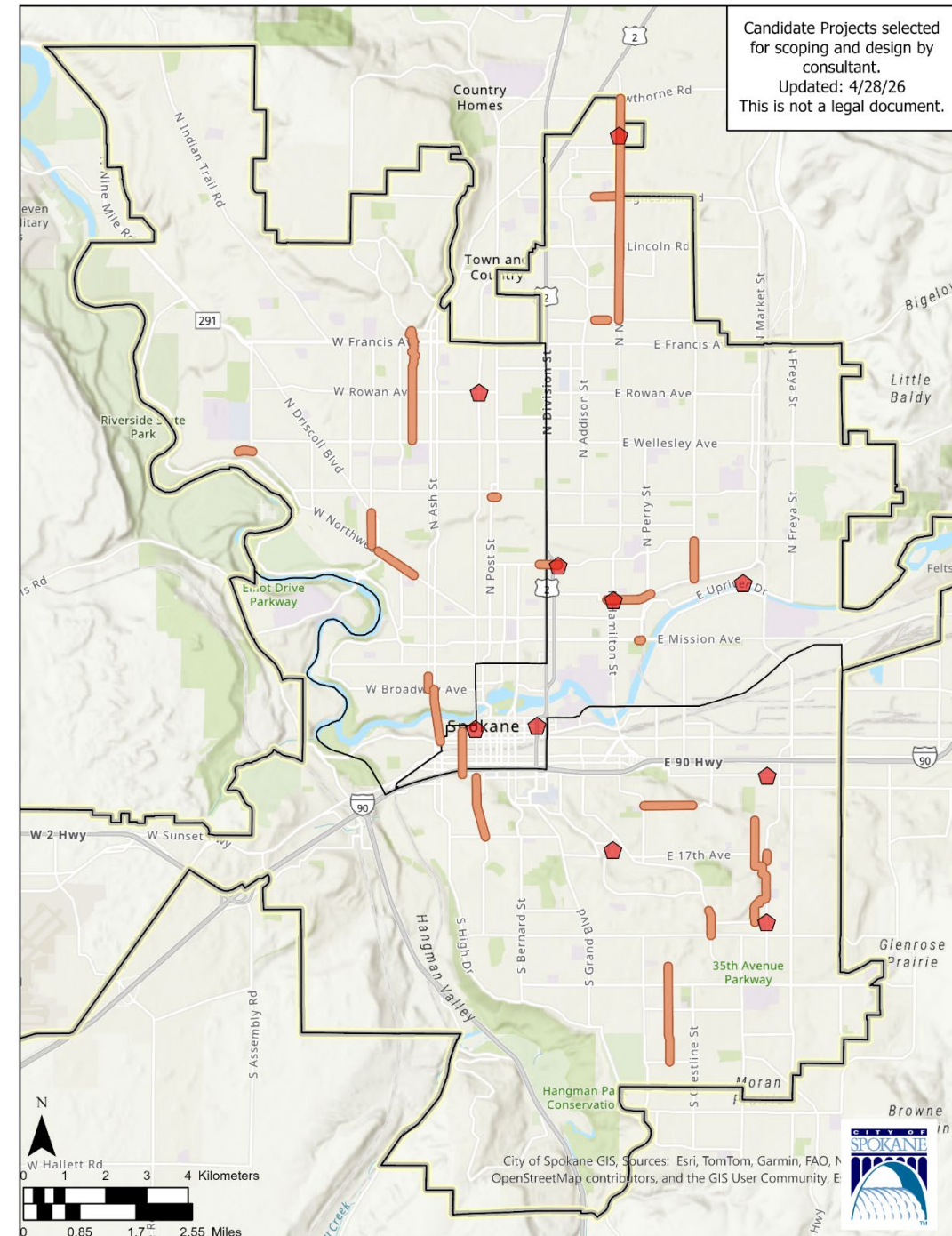
30 projects selected for scoping and design by DOWL

Includes priorities identified by Neighborhood Councils & Transportation Commissioners

Lincoln Heights

West Central, Riverside,

Browne's Addition joint resolution





Projects Selected for Scoping

Breakdown by District:

District 1: 14

District 2: 10

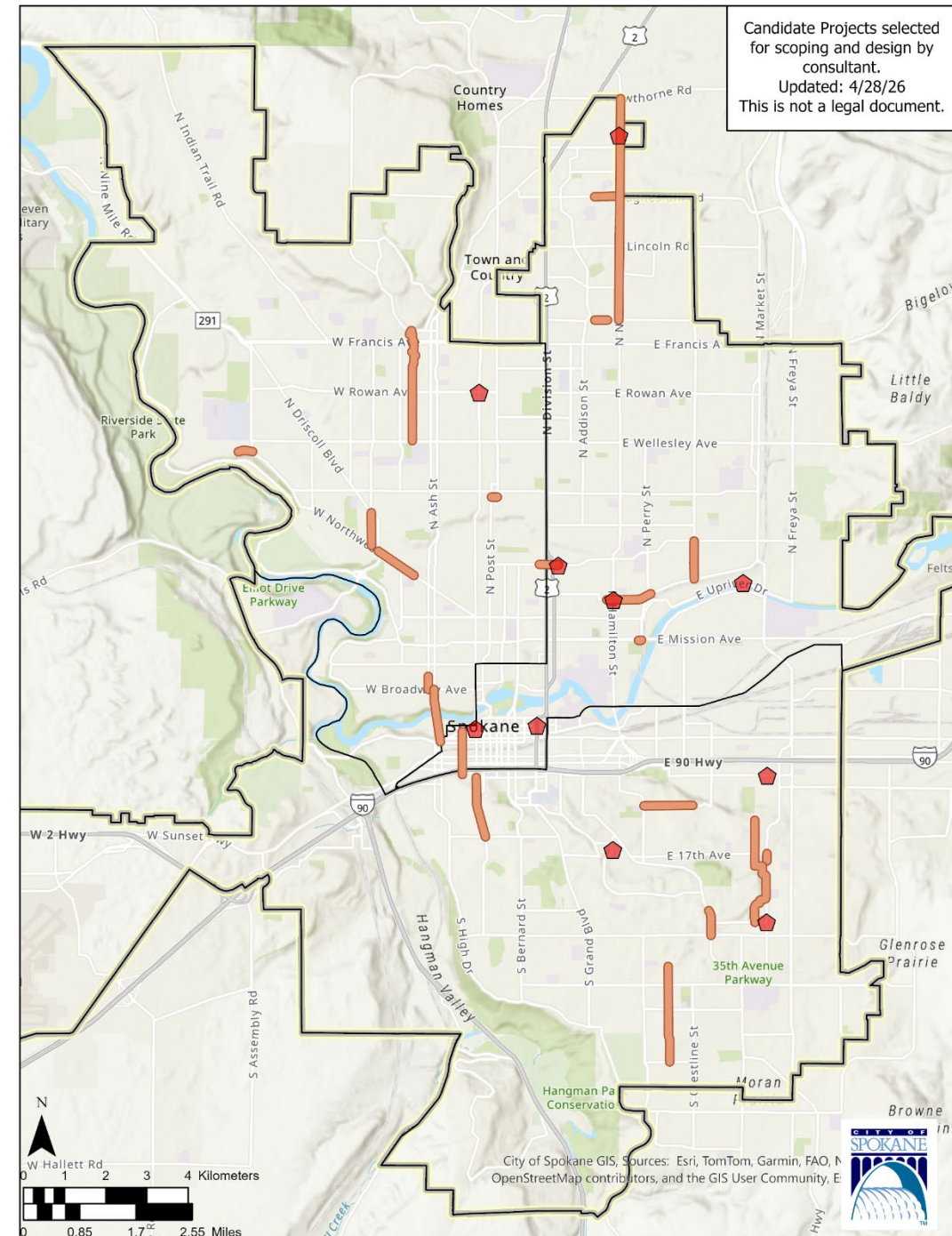
District 3: 9

Breakdown by Source:

Network: 8

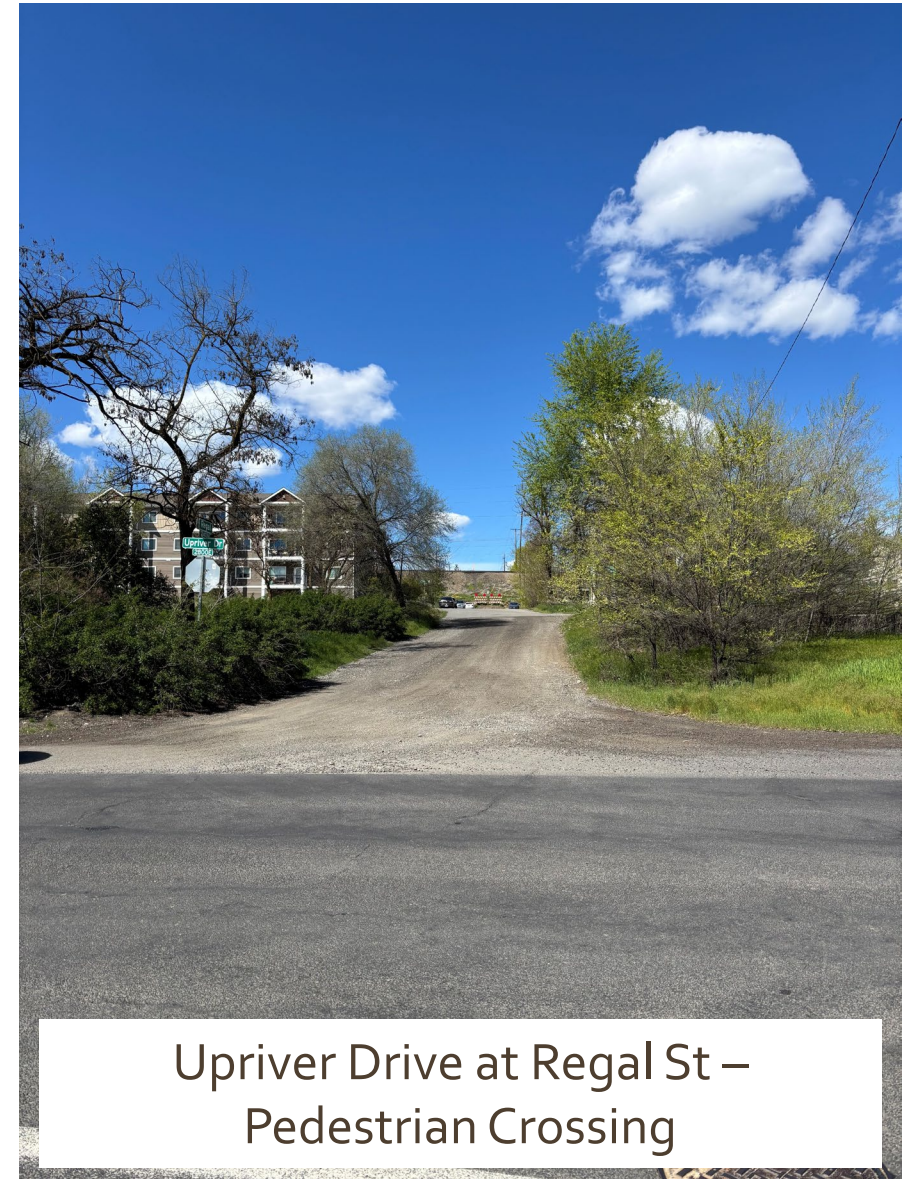
Community Submissions: 21

2022 DOWL List: 1



Selected for Scoping – District 1

Crestline St – Euclid Ave to Illinois Ave
Restripe to narrow lanes, keep
parking, add bike lanes



Upriver Drive at Regal St –
Pedestrian Crossing

Selected for Scoping – District 2



Monroe St – 5th Ave to 14th Ave
Scope: To be determined



Ray St at 27th Ave
Signal

Selected for Scoping – District 3



Maple St Bridge –
Riverside Ave to Broadway Ave -
Pedestrian improvements



Northwest Blvd – TJ Meenach Dr to Elm St
Pedestrian Crossing – possibly at Belt



Already Scoped – Candidate for Cycle 15 Funding

District 1

Project

Logan Elementary SRTS

Lidgerwood Ave - Empire St to Wellesley St

Euclid Ave - Market St to Crestline St

Euclid Ave/Frederick Ave - Sycamore St to Havana St

Perry St at Rogers High School

Garry Middle School SRTS

Bruce Ave – Crestline St to Lee St

Longfellow SRTS – Crestline St /Empire Ave

Montgomery Ave at Cincinnati St

Project Scope

2-3 blocks of sidewalk

Greenway features

Restripe

Sidewalk infill and ramps

Crosswalk and bumpout

Ramps, crosswalk, 20mph zone

RRFB for school

Intersection restripe

Bumpouts on greenway

RRFB – Rectangular Rapid Flashing Beacon

SRTS – Safe Routes to Schools



Already Scoped – Candidate for Cycle 15 Funding

District 2

Project

Cedar St - 14th Ave to 19th Ave

14th Ave - Trolley Trail to Fish Lake Trail

37th Ave at Crestline St

Ray St - 17th Ave to 29th Ave

33rd Ave at Lincoln Dr

Project Scope

Ramps, bumpouts

Sidewalk

RRFB

Widen sidewalk

Bumpouts

RRFB – Rectangular Rapid Flashing Beacon



Already Scoped – Candidate for Cycle 15 Funding

District 3

Project

Northwest Blvd, TJ Meenach Dr to Assembly St

Francis Ave at Fotheringham St

Madison St - Rowan Ave to Garland Ave

Hemlock St/Belt St - Dalton Ave to Liberty Ave

Sunset Hwy - 2nd Ave to Spruce/Coeur D'Alene St

Strong Rd - Five Mile Rd to Nettleton St

Ash St - Francis Ave to Courtland Ave

RRFB – Rectangular Rapid Flashing Beacon

Project Scope

Restripe and island elements

Pedestrian hybrid beacon

Traffic circles

Pathway at Transitions

RRFB, median, curb revisions

Paved shoulder path

Crosswalk bumpouts



Questions?

Nicole White, nwhite@spokanecity.org
Abigail Martin, amartin@spokanecity.org

