



# TBD – Sidewalk Program



City of Spokane – Division of Public Works – Integrated Capital Management Dept.



# Agenda

- Program Introduction
  - Background & History
  - Program Funding
  - Project Prioritization / Selection
- Recent Completed Projects
- Potential Project Locations
  - Select Location at June Transportation Comm



# Program Background and History

- TBD Sidewalk part of original Transportation Benefit District (Car Tabs) Ordinance – Fall, 2010
- Initial work/project - 2011
- 10% dedicated towards sidewalks
  - \$325-350k
  - Total TBD Annual Revenue Range:
    - \$3.1 to \$3.4M (2020 through 2025)
- This program is limited relative to the Citywide sidewalk need



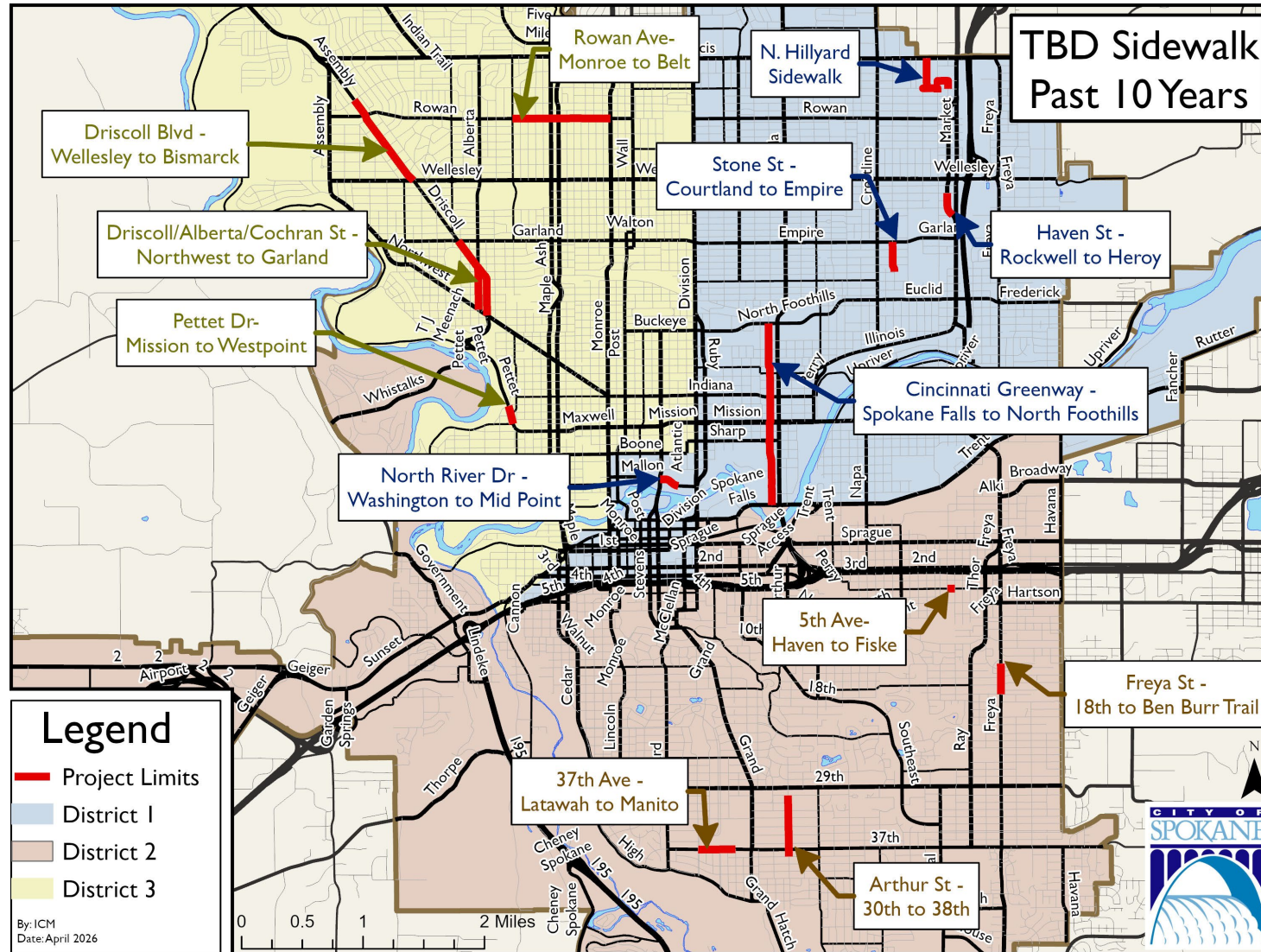
# Sidewalk Program Background

## Project Selection Considerations:

- Generally one **sidewalk infill** project per year, contiguous or nearby selected off of a short list of potential locations.
- ~\$350k annually.
- Selection Priorities:
  - Informed by Comp Plan Goals & Objectives and Pedestrian Plan
  - Priorities: Arterials, Greenways, or locations near high activity centers (schools, parks, community centers, commercial centers).
  - Over time spread work over all three Council districts



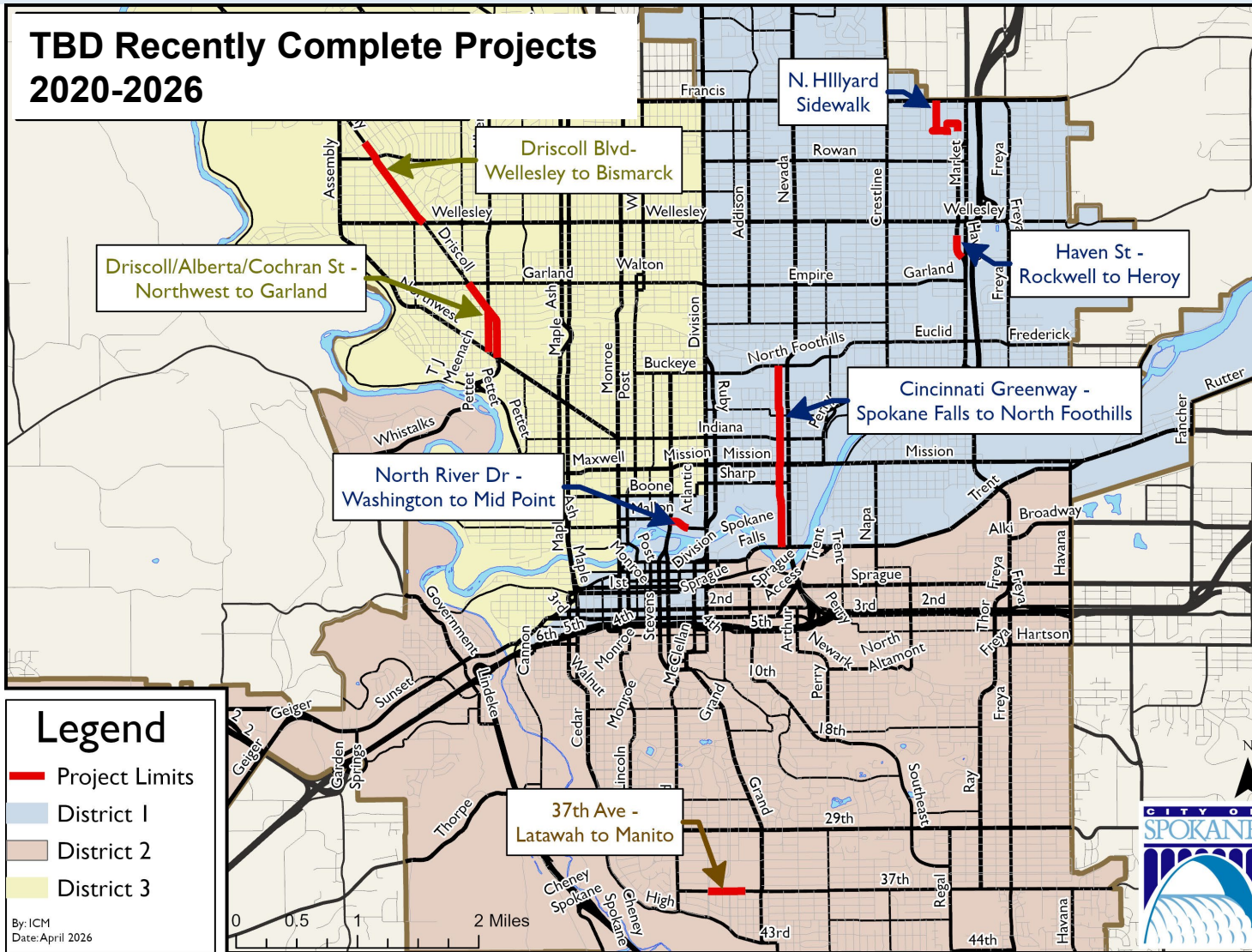
# Overview of Completed Projects



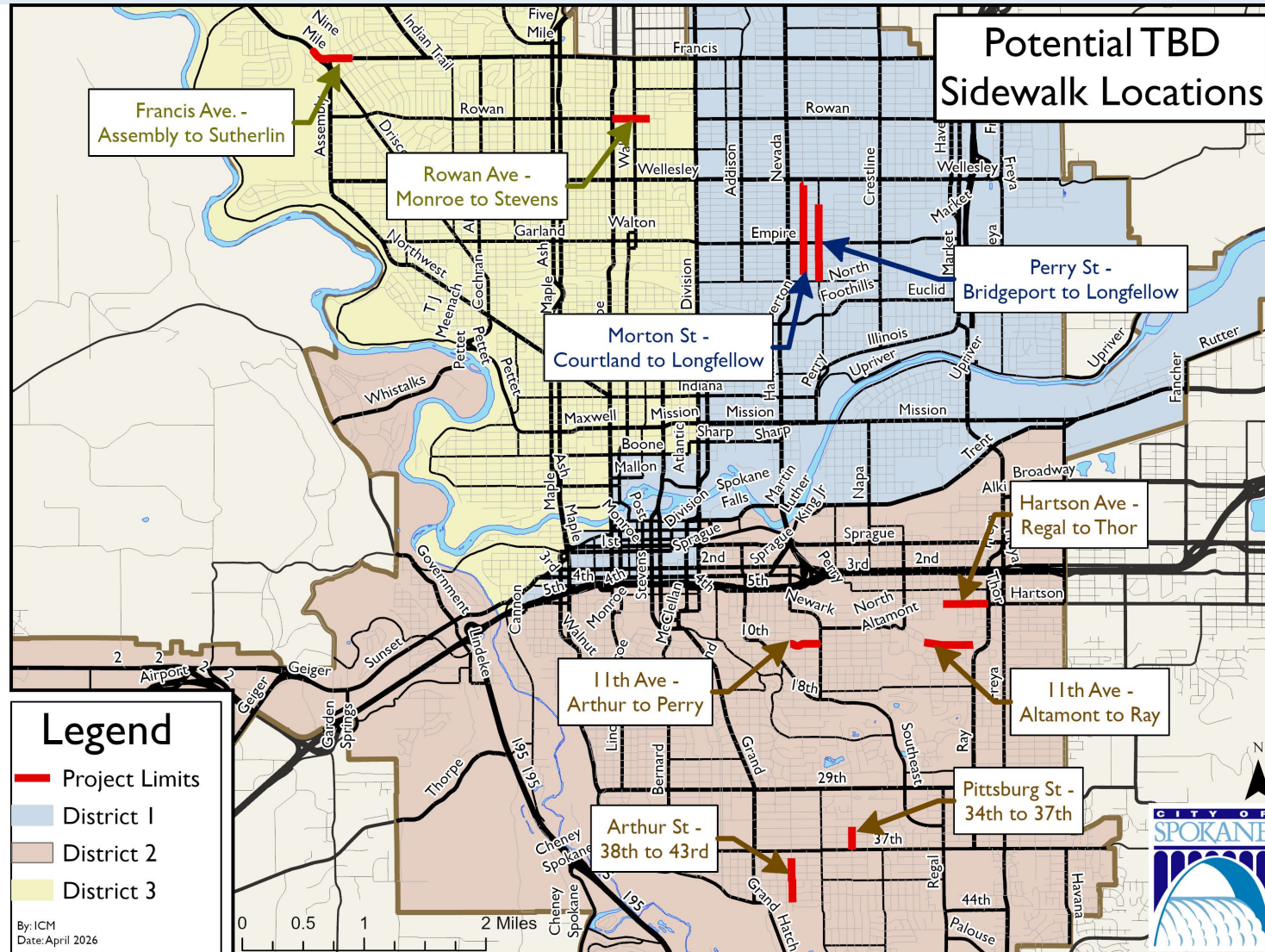
By: ICM  
Date: April 2026



# Recently Completed Projects



# Potential Project Locations



## District 1:

- Perry St.-Bridgeport to Longfellow
- Morton St.- Courtland to Longfellow

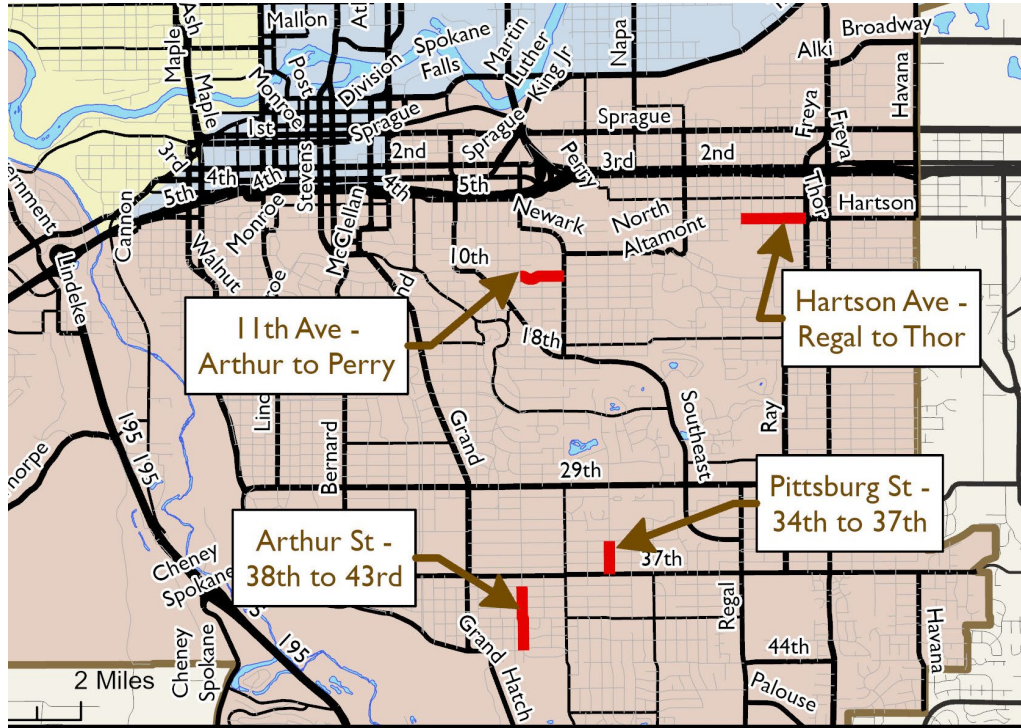
## District 2:

- Arthur St.-38<sup>th</sup> Ave to 43<sup>rd</sup> Ave
- 11<sup>th</sup> Ave.-Arthur to Perry
- Pittsburg St. – 34<sup>th</sup> to 37<sup>th</sup>
- Hartson Ave. – Fiske to Thor St.
- 11<sup>th</sup> Ave.- Altamont to Ray St.

## District 3:

- Rowan Ave.-Monroe to Stevens
- Francis Ave.-Assembly to Sutherlin

# Potential Project Locations: District 2



Potential Funding Range: \$350-400k

Construction: 2027

## District 2 Locations

Location	Length	Estimated Total Project Cost
Arthur St - 38th to 43rd (one side)	2,000	\$350,000
11th Ave (Grant Park) - Arthur to Perry	1,260	\$230,000
Pittsburg St.- 34th Ave. to 37th Ave. (one side)	925	\$170,000
Hartson Ave. - Fiske to Thor (one side)	1,250	\$220,000
11th Ave. - Altamont to Ray St (one side)	2,100	\$370,000

# Next Steps

- Transportation Commission Review Project Locations
- Project location selection:
  - June Transportation Commission meeting
- Design: Winter 2026/27
- Construction: mid/late 2027



Thank you

# Questions/Comments:

**Kevin Picanco**

[kpicanco@spokanecity.org](mailto:kpicanco@spokanecity.org)

