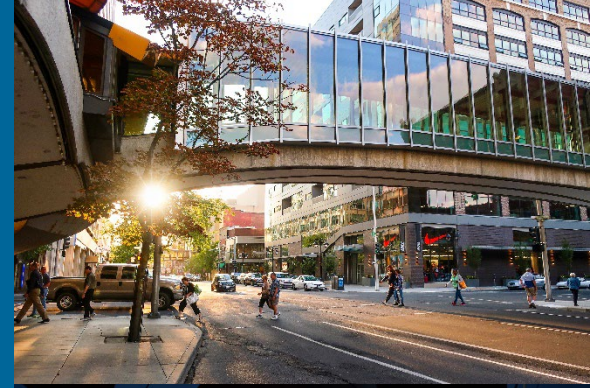




Transportation Commission, 1/21/2026

# Automated Traffic Enforcement Program: Program Expansion

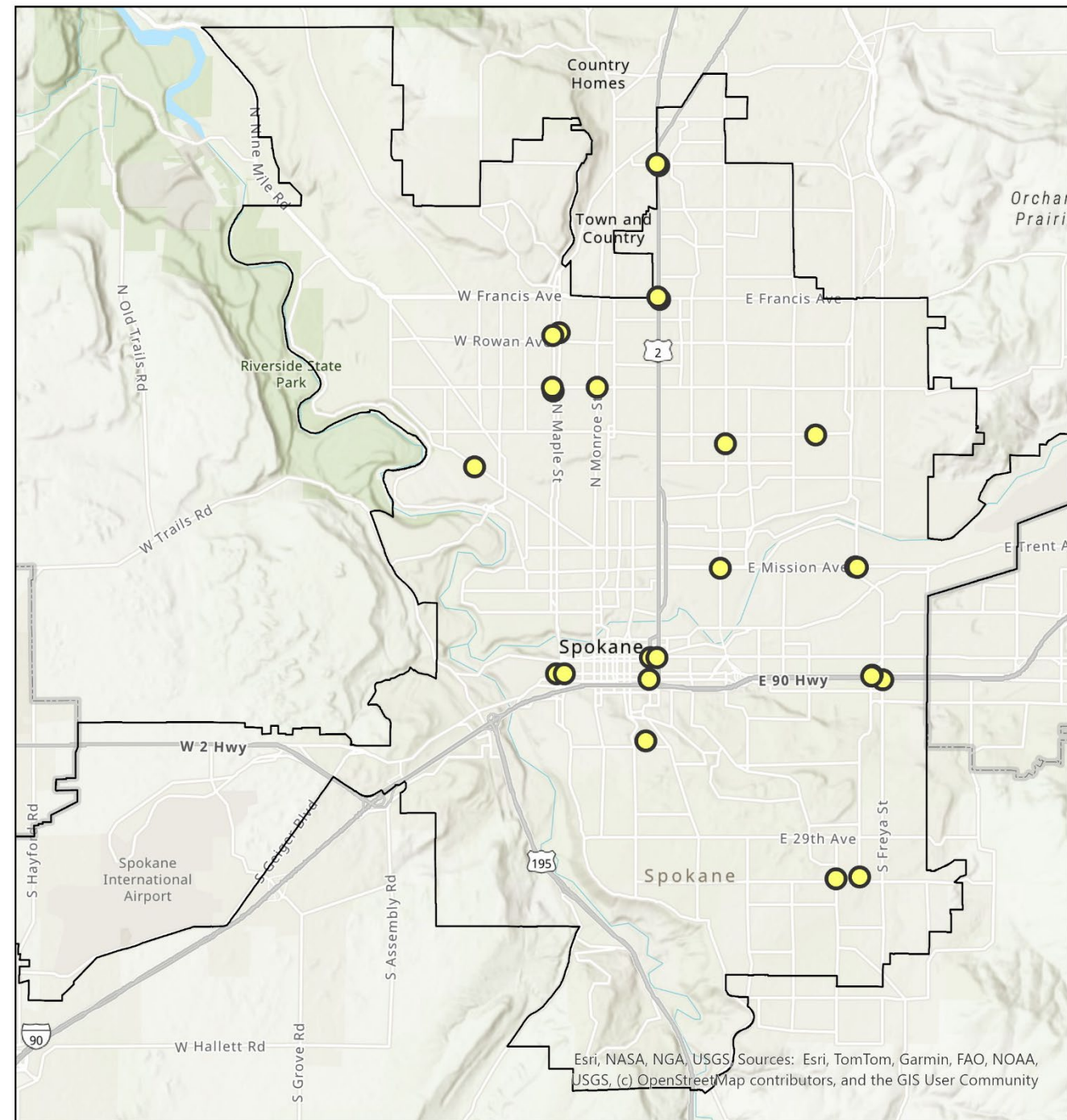
Jon Snyder, [jsnyder@spokanecity.org](mailto:jsnyder@spokanecity.org)





# Automated Traffic Enforcement Program

- Photo Red: 15
- School Speed: 8
- Operational: 23
- Approved: 7





# Progress Update

EB Mission Ave @ Greene St – Photo Red

NB Greene St @ Mission Ave – Photo Red





# Progress Update

EB 2326 E Empire Ave @ Shaw Middle

WB 2599 E Empire Ave @ Shaw Middle

SB 4610 N Ash St @ Shadle Park High

NB N Division St @ E Magnesium Rd

SB N Division St @ E Magnesium Rd



# 2026 Program Expansion

- NB 1917 W SUNSET BLVD
- SB 1917 W SUNSET BLVD
- NB 5598 N NEVADA ST @ GARRY MIDDLE
- SB 5989 N NEVADA ST @ GARRY MIDDLE
- EB 8487 W SUNSET HWY / US 2
- WB 8487 W SUNSET HWY / US 2
- NB 2028 N HAMILTON ST @ LOGAN ELEMENTARY
- SB 2403 N HAMILTON ST @ LOGAN ELEMENTARY
- EB 2435 E FRANCIS AVE @ ARLINGTON ELEMENTARY
- WB 2638 E FRANCIS AVE @ ARLINGTON ELEMENTARY
- SB 509 W MONROE ST
- EB 1627 E MISSION AVE @ STEVENS ELEMENTARY
- WB 2007 E MISSION AVE @ STEVENS ELEMENTARY
- EB 2611 E MISSION AVE
- WB 2611 E MISSION AVE
- NB 3026 N DIVISION ST / US 2
- SB 3026 N DIVISION ST / US 2
- EB 2015 E 29th AVE
- WB 2015 E 29th AVE
- NB 8568 N INDIAN TRAIL RD
- SB 8568 N INDIAN TRAIL RD
- NB 4328 W INDIAN TRAIL RD
- SB 4328 W INDIAN TRAIL RD

# Logistical Considerations

## Municipal Court

- Clerks
- Docket Time
- Office
- Capacity
- Commissioners

## Prosecutor's Office

- Staff/interns for violations

## Spokane Police Dept.

- Staff to review violations

## Policy Considerations

- Should school zone cameras enforce 24 hrs/day?
- How many cameras is too many on one street?



# Questions

Jon Snyder, [jsnyder@spokanecity.org](mailto:jsnyder@spokanecity.org)

