



Sidewalk Pilot Program Development

Transportation Commission – 11/19/25
Intro and Status Update



Division of Public Works
Integrated Capital Management
Kevin Picanco, PE – Principal Engineer
Lorena Croucher, PE – Associate Engineer



Agenda

- Pilot Background
- Status/Progress Update
- Pilot Workflow Overview
 - Data Collection and GIS Analysis
 - Policy Analysis
- Future Transportation Commission Involvement
 - Status update from staff on needs analysis, program costs, program design and funding alternatives
 - Location Prioritization Methodology

Background – Pilot Workplan

- Potential pilot program approaches discussed at October 17, 2024 Council Study Session

1) Program Design and Data Collection

- \$500,000 pilot budget
- Focus on Data Collection, Program Design, Location Selection/Prioritization, Funding Need/Scenarios
- No Construction

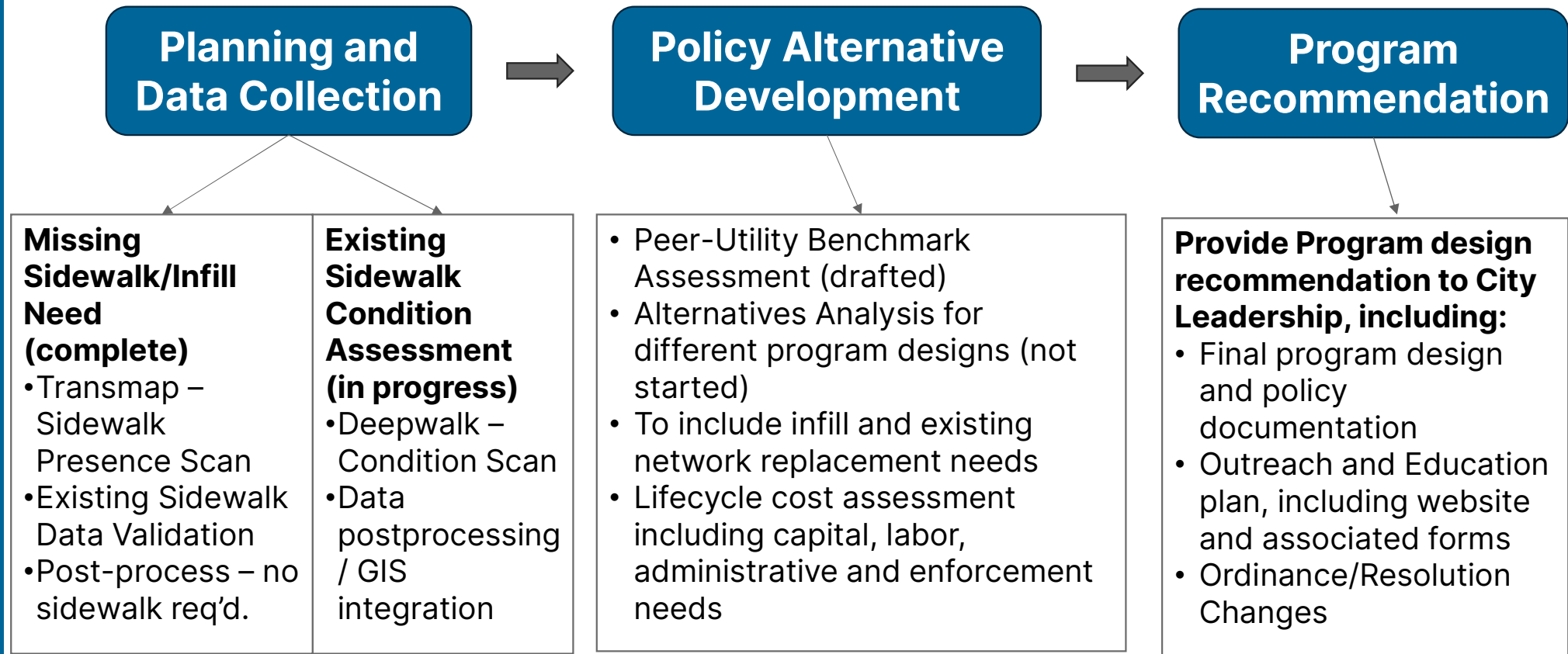
2) Construction w/ Limited Data Collection and Program Design

- Limited Data Collection (Data collection pilot only)
- Limited Program Design and Prioritization
- Prioritization of a narrowly focused or limited area of construction

Status Update Overview

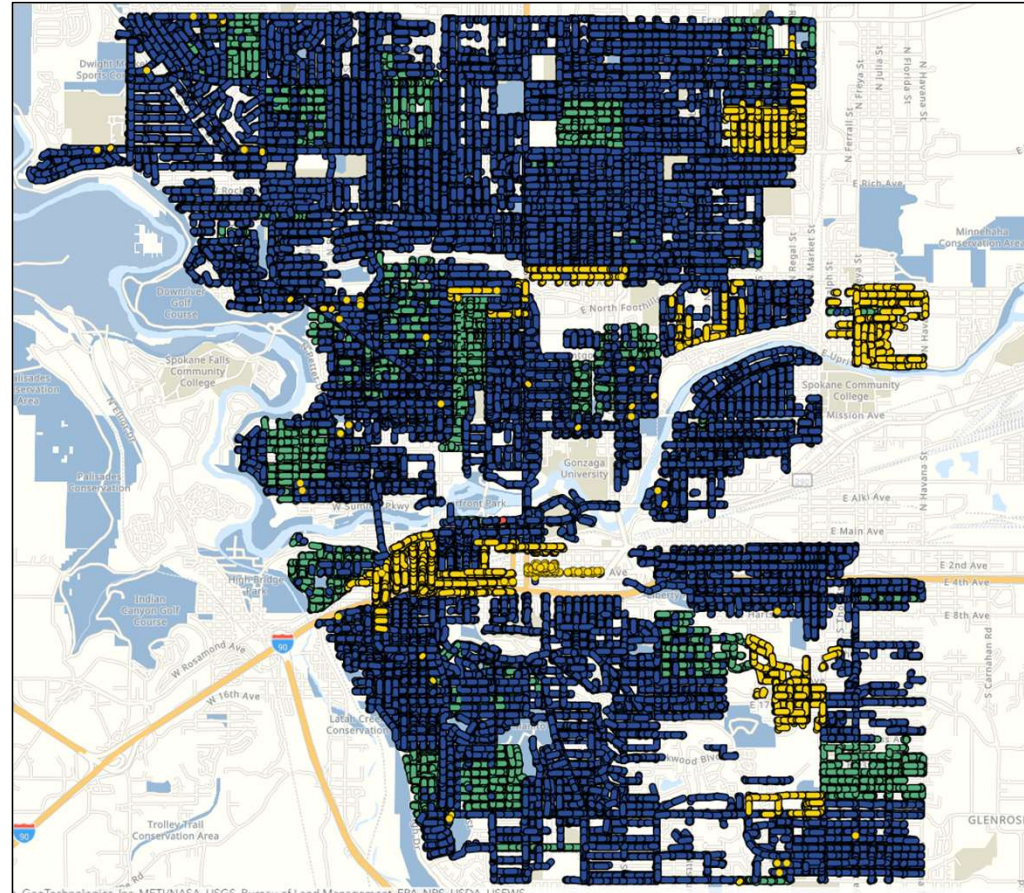
- Sidewalk Replacement & Infill Program Development
 - Planning and data collection
 - Data collection/processing – sidewalk infill (complete)
 - Data collection – sidewalk and ADA ramp condition (complete)
 - Data post processing/quality control (in progress, ~20%)
 - Define total Need and Cost Estimates
 - Policy alternative development (in progress)
 - Recommended Program Design (not started)

Workflow Overview

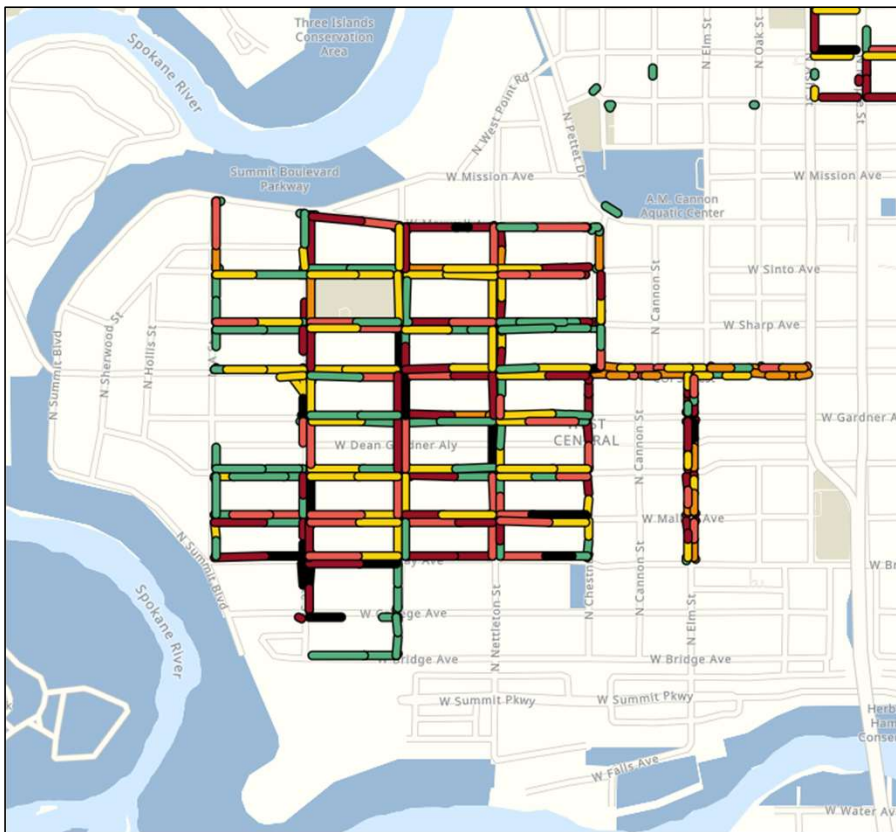


Planning and Data Collection

- 3 Interns conducted scanning June - October
- Scanning areas prioritization:
 - Existing sidewalk network (not missing/infill areas)
 - Primarily residential areas
 - Older sidewalk segments
- Miles scoped = 865 (~75% network, ~\$300K)
- Miles scanned = ~860
- Miles processed = 150



Planning and Data Collection (cont.)



**Image reflects processed data, not scanned data*

- Aggregate sidewalk & ADA ramp condition score based on:
 - Sidewalk accessibility
 - Run slope
 - Cross slope
 - Clear width
 - Deterioration (surface condition)
- City will own GIS data (attributes and imagery scans)

ADA Ramps

- Arterial Maintenance G&O's – 75 to 85 ramps per year. \$900,000 to \$1M / year
- Local Street G&O's - ~50 to 70 ramps per year. \$500,000 to \$750,000
- Capital projects:
 - Grant funded G&O's, Sidewalk Infill, Ped/Bike Safety, SRTS, and Rebuilds

Policy Alternative Development

- Benchmark assessment → peer city review

Category	Description	Municipalities
Fee Structure / Annual Assessment	The city assesses an annual fee to each property within municipal boundaries. Discounts may apply based on income or recent sidewalk work	Denver, Syracuse
Tax	A resident-voted tax is applied	Seattle (previous levy), Scottsdale, Olympia
Cost Sharing	City shares costs with residents (usually 50/50). Reimbursement-based, subject to city design and permits	Tacoma, Garland, Montrose, Dallas, Fremont
CIP Project	City dedicates Capital Improvement Program funds to sidewalk repair and additions	Seattle, Olympia, Hialeah, Frisco, Richmond, Fremont, Huntsville
City-funded Replacement	General fund dollars primarily used, subsidized with external funding when available	Hialeah, Cape Coral, Fremont, presumably all municipalities

Workflow Overview

**November 2024 –
December 2025**

Planning and Data Collection



Winter/Spring 2026

Policy Alternative Development



Summer 2026+

Program Recommendation

Missing Sidewalk/Infill Need (complete)

- Transmap – Sidewalk Presence Scan
- Existing Sidewalk Data Validation
- Post-process – no sidewalk req'd.

Existing Sidewalk Condition Assessment (in progress)

- Deepwalk – Condition Scan
- Data postprocessing / GIS integration

- Peer-Utility Benchmark Assessment (drafted)
- Alternatives Analysis for different program designs (not started)
- To include infill and existing network replacement needs
- Lifecycle cost assessment including capital, labor, administrative and enforcement needs

Provide Program design recommendation to City Leadership, including:

- Final program design and policy documentation
- Outreach and Education plan, including website and associated forms
- Ordinance/Resolution Changes



Future Transportation Comm Involvement



- Staff update on:
 - status, needs analysis estimated costs, program design and funding options
- Commission input on program design and location prioritization methodology

