

LINK Spokane Project Selection Criteria

PCTS
Nov 2015

Matrix Types

- ◉ Reconstruction (**today's discussion**)
- ◉ Maintenance / Overlays
- ◉ Non-Motorized
- ◉ Transportation Impact Fee

Transportation Choices Person Capacity

- 1 pt - < 5k ADT
- 2 pts – < 5k ADT + HPTN *or* 5k-10k ADT
- 3 pts – 5k-10k ADT + HPTN *or* 10k-20k ADT
- 4 pts – 10k-20k ADT + HPTN *or* > 20k ADT
- 5 pts – > 20k ADT+ HPTN



Transportation Choices Network Connectivity

- 0 pts - none
- 2 pt – adds one mode
- 3 pts – adds two modes
- 4 pts – adds three modes
- 5 pts – adds four modes



Access to daily needs

Neighborhood Accessibility

- 1 pts – score 1-5
- 2 pts – score 6 -10
- 3 pts – score 11 - 15
- 4 pts – score 16-20
- 5 pts – score 21-25



Schools



Community Centers



Neighborhood
Retail

Access to daily needs

Regional Accessibility

- 0 pts - none
- 2 pt – 1-2 destinations near project limits
- 3 pts – 3-4 destinations near project limits
- 4 pts – 5-6 destinations near project limits
- 5 pts – downtown core



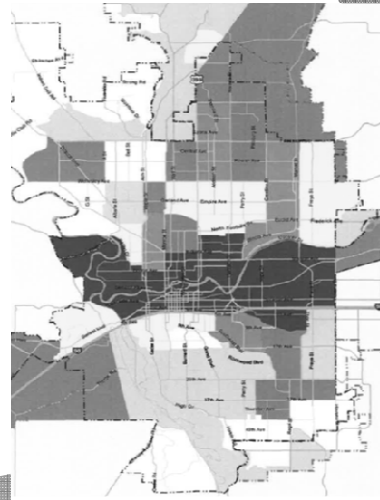
Downtown Library



Spokane Falls Community College

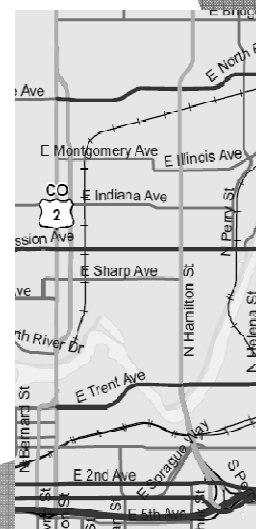
Access to daily needs Disadvantaged Accessibility

- 0 pts - 0% - 6.92%
- 1 pts - 6.93% - 11.43%
- 2 pts - 11.43% - 19.36%
- 3 pts - 19.37% - 26.4%
- 4 pts - 26.45% - 32.9%
- 5 pts - 32.91%



Economic Opportunity Freight & Goods Movement

- 0 pts - not classified
- 1 pt - T5 (20-100 tons)
- 2 pts - T4 (100-300 tons)
- 3 pts - T3 (300-4,000 tons)
- 4 pts - T2 (4,000-10,000 tons)
- 5 pts - T1 (over 10,000 tons)



Economic Opportunity

Development/Redevelopment Potential

- 0 pts - none
- 1 pt - within ½ mile
- 3 pts - within ¼ mile
- 5 pts - within project limits



Target Areas



Centers and Corridors



The YARD

Natural & Neighborhood Assets

Air Quality

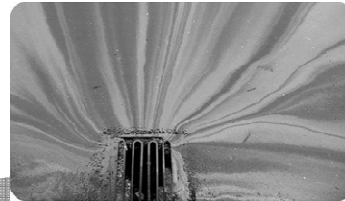
- 0 pts - adds VMT
- 2 pt - neutral
- 3 pts - decreases idling
- 5 pts - reduces VMT



Natural & Neighborhood Assets Water Quality

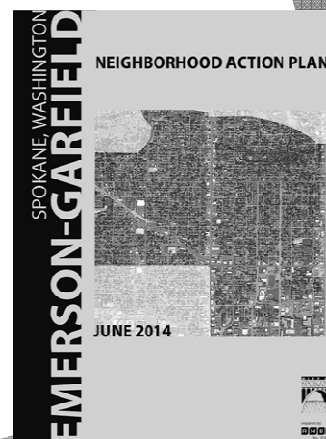


- 0 pts - negative
- 2 pts - neutral
- 5 pts – includes new or updated stormwater facilities



Natural & Neighborhood Assets Neighborhood/District Impact

- 0 pts -
not in neighborhood plan
- 2 pt – consistent with
plan concepts
- 5 pts – project listed in
neighborhood plan



Enhance Public Health & Safety Vehicle Safety

0 pts - none

3 pts – clear safety benefit

5 pts – corrects documented collision pattern



Enhance Public Health & Safety Bike Safety

0 pts - none

2 pts – signing, marking

3 pts – bike lane

4 pts – buffered lane, greenway, controlled xing

5 pts - separated path, grade separated xing



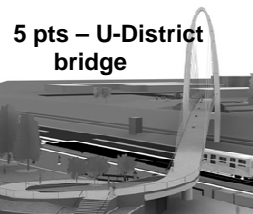
Enhance Public Health & Safety Pedestrian Priority Area

- 0 pts – none
- 2 pts – vicinity of ped priority area
- 5 pts – in ped priority area



Enhance Public Health & Safety Pedestrian Safety

- 0 pts - none
- 2 pt – sidewalk ramps or leveling
- 3 pts – adds sidewalk or crosswalk
- 4 pts – adds controlled crossing
- 5 pts – adds separated path or xing



5 pts – U-District
bridge



2 pts – curb ramps

Fiscal Responsibility CSO Integration

- 0 pts - none
- 1 pts – Low Priority
- 3 pts – Medium Priority
- 5 pts – High Priority



Fiscal Responsibility Water Integration

- 0 pts - none
- 1 pts – 1995 – present
- 2 pts – 1975 - 1994
- 3 pts – 1956 - 1974
- 4 pts – 1931-1955
- 5 pts – 1850-1930



Fiscal Responsibility

Maintenance and Facility Condition

0 pts - PCI 80-100

2 pts - PCI 60-80

3 pts - PCI 40-60

4 pts - PCI 20-40

5 pts - PCI 0-20



Fiscal Responsibility

Leveraged Financing

0 pts - limited

1 pt - grant eligible

2 pts - on impact fee list

4 pts - <50% funded

5 pts - >50% funded

(excludes levy funds)

