



# SRTC Plan Review and Certification Process

County and UZA Cities and Towns  
Non-UZA Cities and Towns  
Regional Public Transportation Authority

June 2, 2015

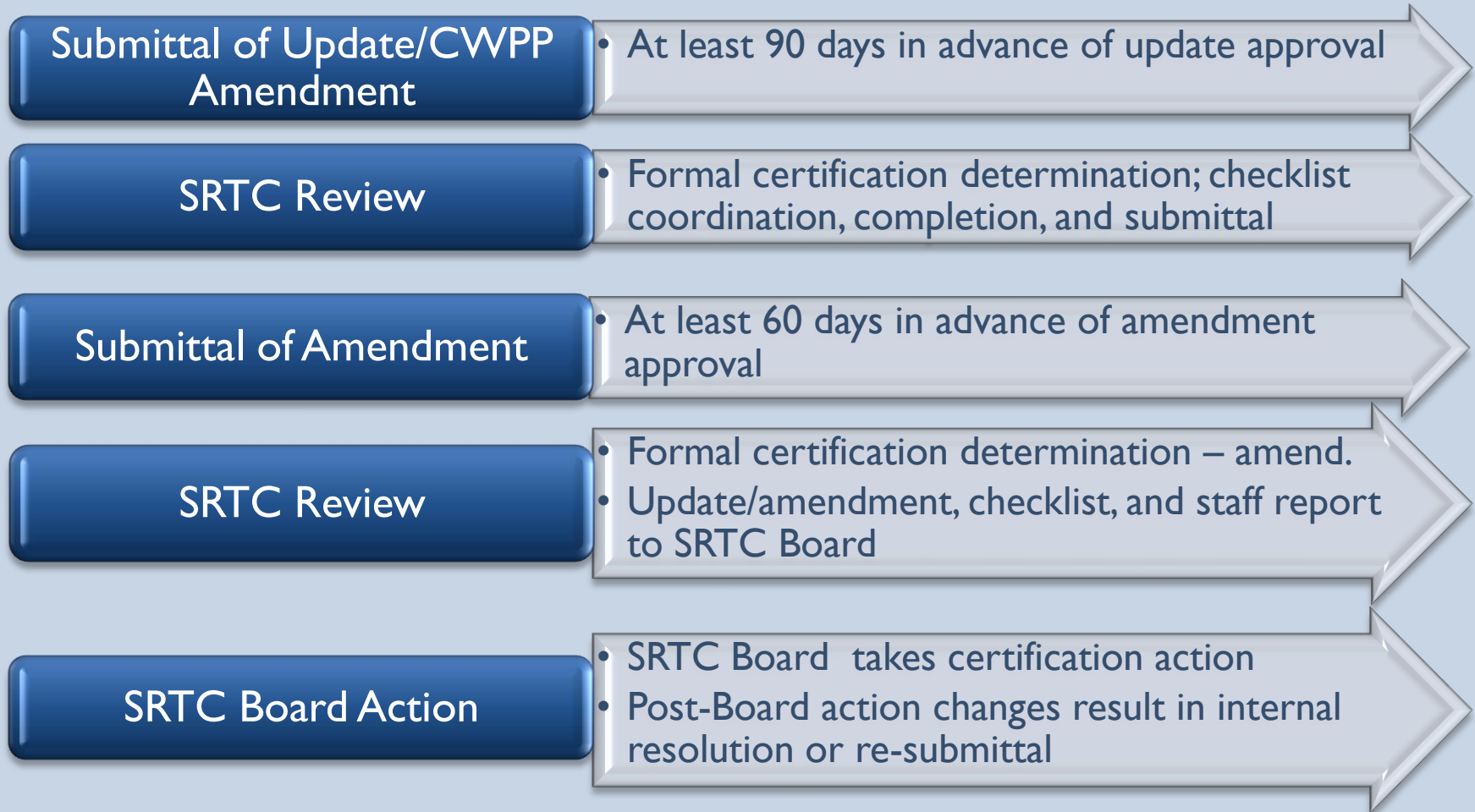
# Introduction

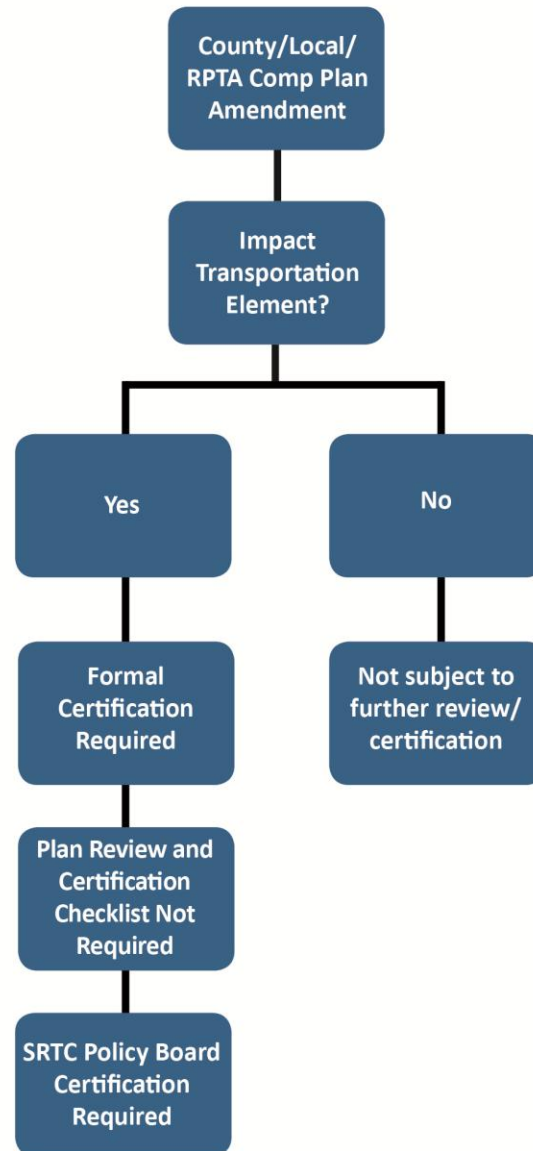
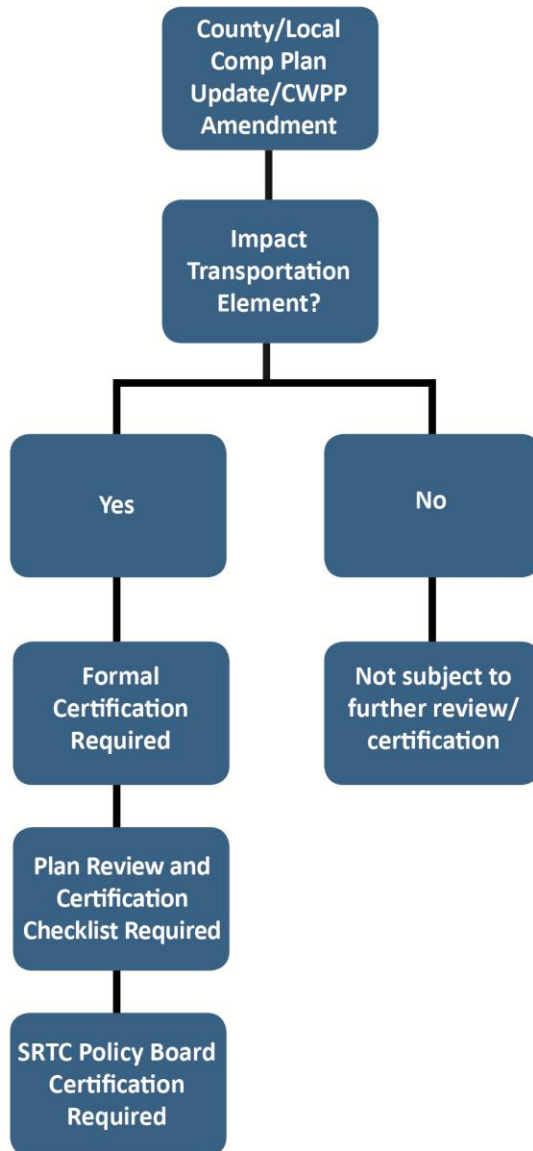
- ▶ RTPOs are authorized by Growth Management Act (GMA) and Revised Code of Washington (RCW) to certify updates and amendments to the following plans for consistency between the transportation element and the Regional Transportation Plan (RTP):
  - Comprehensive Plans (County, local jurisdiction, regional public transportation authority)
- ▶ RTPO's are authorized to review and certify amendments to the following policy for consistency with the RTP:
  - Countywide Planning Policies (CWPP)

# Applicability


- ▶ Comprehensive plan updates/amendments and CWPP amendments must be submitted to SRTC for review
- ▶ Formal certification of CWPP amendments, County/local comprehensive plan updates required if transportation policies/element impacted
- ▶ Formal certification of RPTA's comprehensive plan update required
- ▶ SRTC staff available to assist smaller jurisdictions to update transportation element of comprehensive plan

# Plan Update/Amendment Process






# Certification Criteria

1. Coordinated with jurisdictions, tribes, and agencies
  2. Supportive of Horizon 2040 Guiding Principles & Policies
  3. Consistent with SRTC Long-Term Regionally Significant Projects and Programs
  4. Inclusive of TDM and bicycle/pedestrian policies, programs, and projects
  5. Inclusive of planning for freight mobility and accessibility on SRTC freight priority network
  6. Inclusive of planning for maintenance and preservation
- 



# Certification Criteria (cont.)

7. Coordinated with Urban Transportation Corridors and Regional Employment Activity Centers
  8. Inclusive of Congestion Management Process (CMP) strategies (TDM, transit, ITS) on CMP corridors and non-CMP corridors that add SOV capacity
  9. Coordinated between transportation and land use elements
  10. Coordinated between capital facilities and utilities and land use elements
  11. Providing local concurrency LOS methodologies
  12. Describing local LOS impacts of the update
- 

# Regional Level of Service (LOS)

- ▶ RTPOs authorized by RCW to review regional LOS methodologies used by cities and counties to promote a consistent regional evaluation of transportation facilities and systems
- ▶ SRTC evaluates:
  - Regional Vehicular Travel Time (non-HSS)
  - Vehicular Impacts on HSS (TBD; for illustrative purposes)
  - Per Capita Vehicle Miles Traveled (VMT)
  - Systemwide Transit Ridership
  - Region-wide Nonmotorized Mode Share (biking/walking)



# Regional Level of Service (LOS) (cont.)

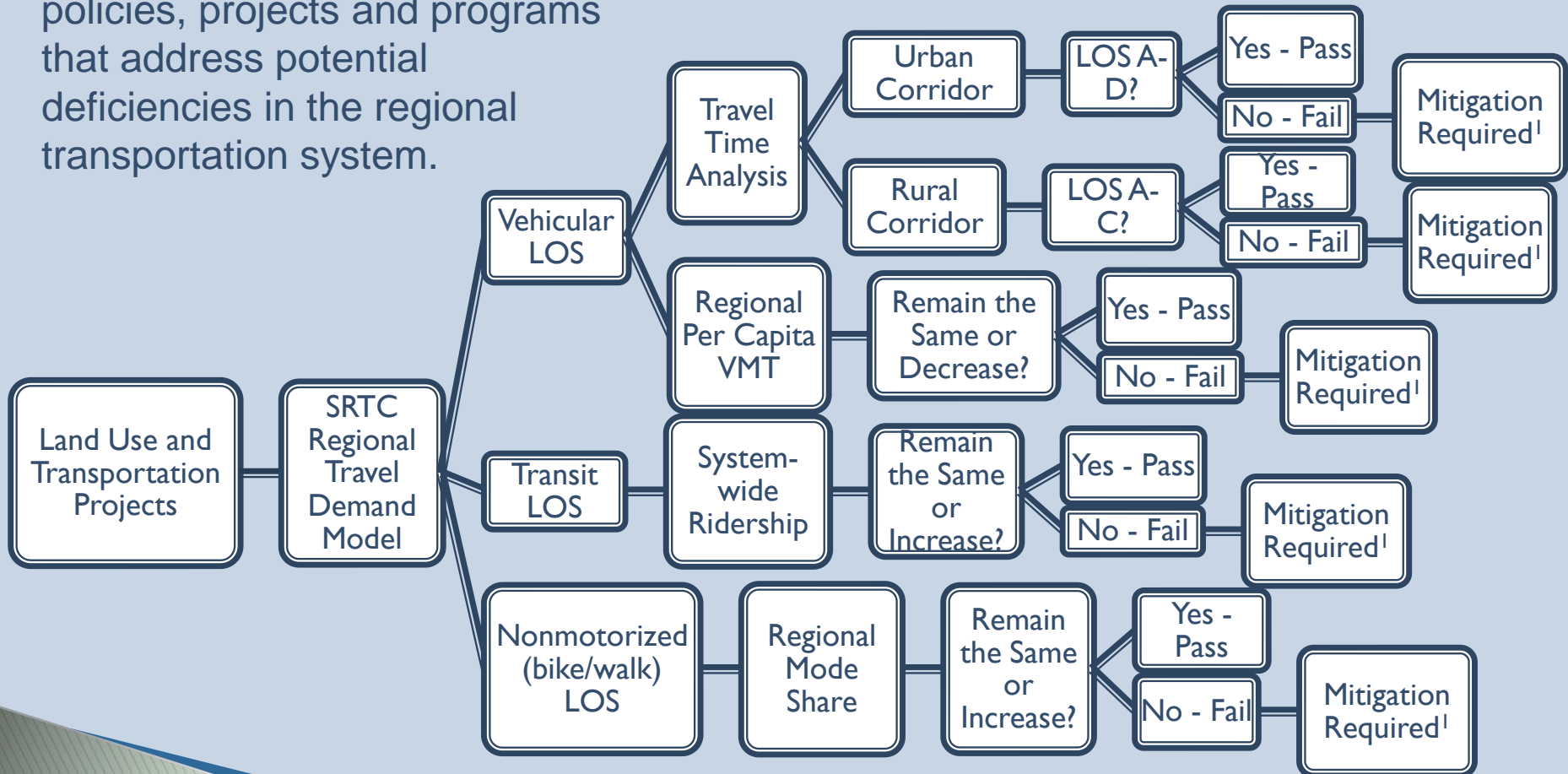
- ▶ Data needed from jurisdictions for LOS analysis:
  - Land use data for 12 land use types that represent different types of housing units and employees and identify unique travel behaviors for each land use type
  - A schematic or description detailing name, location, distance, alignment, number of lanes, speed limit, facility type (FFC), capacity, intersection control, and intersection geometry for all transportation projects included within the transportation element

# Regional Level of Service (LOS) (cont.)

- ▶ Data needed from regional public transportation authority for LOS analysis:
  - Route changes (new routes, removal of existing routes and any other changes to the physical routing of lines)
  - Bus stop changes (addition/removal/relocation)
  - Service changes (schedule information including time points, frequencies/headways, time span, etc.)
  - Other capital facility changes (new or altered existing park & rides, stations, flyer stops, etc.)

# Regional LOS Evaluation Process

<sup>1</sup> Identify proposed mitigating strategies in the plan, including policies, projects and programs that address potential deficiencies in the regional transportation system.



# Next Steps

## ▶ Current

- SRTC gathering feedback from local jurisdictions and agencies on the Plan Review and Certification Checklist and the Plan Review and Certification Instruction Manual

## ▶ June

- SRTC Board review of checklist and manual

## ▶ July

- SRTC Board action on checklist and manual



# Questions?