



**Committee Members:** Chairperson – Wright, Chris   
Kelley, Ross   
Meyer, Kristine   
Potratz, Preston   
Selinger, Samuel   
Traver, Susan   
Allen, Mike   
(Alt) Santorsola, Jim   
(Alt) Van Voorhis, Kenneth

Also Present: Park Board – Randy Cameron; and  
Parks Staff – Debby Dodson, Leroy Eadie, Juliet Sinisterra, Sam Song

(Notes: Sam Selinger attended telephonically. Ken Van Voorhis arrived shortly after the meeting began.)

**Special Meeting of the Spokane Park Board  
Riverfront Park Committee  
January 6, 2014 - 8:05 a.m. - 10:00 a.m.  
City Hall Conference Room 5A, Fifth Floor  
808 W. Spokane Falls Boulevard, Spokane, Washington  
Sam Song, Acting Recreation and Entertainment Division Manager**

**Summary**

- December, 2013, Riverfront Park Operations – Staff gave a PowerPoint presentation. A printed outline version was also provided.
- 2013 Riverfront Park Annual Report – Staff gave a PowerPoint presentation. A printed outline version was also provided.
- The Committee recommended Park Board approve the one-year IMAX Corporation Contract as presented.
- 2014 Capital – A written list was provided and reviewed. Revenue projections for the kiosk, food service equipment, riverside dining and fencing, and reader board line items were requested.
- The Riverfront Park Master Plan Advisory Committee - The Advisory Committee Chairperson will present a 50% report at the January Park Board meeting. Architectural and landscape consultants are being hired to develop conceptual renderings for Advisory Committee and Park Board use. Messaging framework is being refined. An estimated conceptual construction budget and potential financing options were reviewed.
- Financial Reports - Written reports were provided. Expectations are for the final 2013 reports to show expense savings exceed revenue shortfalls. The Committee Chairperson encouraged review of revenue declines and expenditure savings information with any resulting questions to be brought to the February meeting.

## **Minutes**

The meeting was called to order at 8:05 a.m. by Chairperson, Chris Wright. Introductions were made.

### **Information Items:**

1. December, 2013, Riverfront Park Operations – Staff gave a PowerPoint presentation. A printed outline version was also provided. Discussion included: the North Pole Express; First Night Celebration and related activities; and the Free Holiday Film Festival and concession sales.
2. 2013 Riverfront Park Annual Report – Staff gave a PowerPoint presentation. A printed outline version was also provided. Discussion included: Riverfront staff; moving people through the park; SkyRide/Huntington Park holiday ideas; food service financial highlights; parking revenue; explanations regarding revenue increases and decreases; the importance of considering both revenue decreases and expenditure savings; the Randall Survey; competition with private enterprise; utilizing the Advisory Committee for community outreach to gain a sense of how Parks should pursue enterprise opportunities in the best interest of the community; Fountain Meadow soil issues; and community partnership opportunities.

### **Action Items:**

1. IMAX 2014 Contract – Staff reviewed the history and current details of the contract. Discussion included: the 2014 Budget includes the Contract; explanation of the breakdown of contract figures and 2013 IMAX Summary; the term and cancellation clause; the cost of film prints is included in the Budget, but is not part of the Contract; and the Contract is necessary to continue IMAX operations.  
**Motion #1:** Ross Kelley motioned to approve the one-year IMAX Corporation Contract as presented. Preston Potratz seconded.  
Motion passed unanimously.

### **Discussion Items:**

1. 2014 Capital – A written list was provided and reviewed by Staff. Discussion included: the reader board, and related advertising restrictions, sponsorships, and if Park Board action is required; the anticipated expenditure time line; ice palace heaters and water tank; request for revenue projections for the kiosk, food service equipment, riverside dining and fencing, and reader board line items; Board Member caution regarding sponsorships and associated locations in the park; and a reminder the Board has already approved the 2014 Capital Outlay Budget.

### **Standing Report Items:**

1. Riverfront Park (RFP) Master Plan – The Advisory Committee Chairperson will present a 50% report at the January Park Board meeting. Architectural and landscape consultants are being hired to develop conceptual renderings for Advisory Committee and Park Board use. Messaging framework is being refined to enhance the upcoming public outreach/education campaign. Staff reviewed an estimated conceptual construction budget, and potential financing options. It is a twenty-year build-out plan. Discussion included: phasing; ongoing maintenance factors; the bond term; escalation; bond extension language; maintaining credibility; impacts of interest rate changes; funding total and possible sources; financial control; and anticipated citizen support of a bond.

2. Financial Reports – Written reports were provided. Staff expects the final 2013 reports to show expense savings exceed revenue shortfalls. Discussion included: Riverfront Park exists to be enjoyed, so 100% cost recovery should not be expected even though enterprise/event/entertainment components need to be properly managed; kudos were given to Riverfront Park staff for their efforts to keep the Park sustainable; public outreach legalities; and increasing the annual number of events in the Park. The Committee Chairperson encouraged review of revenue declines and expenditure savings information with any resulting questions to be brought to the February meeting.

The meeting was adjourned at 10:02 a.m.

Next meeting will be February 10, 2014, at 8:05a.m. in Tribal Council Room 1, Fifth Floor, City Hall, 808 W. Spokane Falls Boulevard, Spokane, Washington.

# Happy Holidays



December 2013 OPERATIONS

## RIVERFRONT PARK

# Special Events

- North Pole Express
  - 550 Guests
- Free Holiday Film Festival
  - 2,063 Guests
- 29 Carrousel Rentals
  - 3,500 + Guests Nov. 29-Dec. 29
- First Night Celebration
  - 12,000 Guests



## NORTH POLE EXPRESS AT RIVERFRONT PARK

Climb aboard the North Pole Express for a holiday train ride through Riverfront Park to the North Pole.  
Spend time with Santa Claus  
Enjoy hot chocolate and cookies by a warm fire  
Crafts, music and fun for the whole family

Train leaves the Carrousel Station on  
Saturday 12/14 & 12/21 @ 12p, 2p, 4p, 6p  
Sunday 12/15 & 12/22 @ 12p, 2p, 4p  
\$12 per person  
One child 5 and under free per paid adult  
Visit [www.spokaneriverfrontpark.com](http://www.spokaneriverfrontpark.com) for more information

Tickets available at Riverfront Park Ice Palace or reserve your seat by phone 625-6600. Reservations strongly recommended as space is limited.



## FREE! HOLIDAY FILM FESTIVAL AT RIVERFRONT PARK

Movies playing daily in the IMAX Theater during winter break 12/21 - 12/29. Except Christmas Day

**DAILY SHOWTIMES**

|  |      |
|--|------|
| Arthur Christmas.....                          | 11am |
| Disney's A Christmas Carol.....                | 1pm  |
| Elf.....                                       | 3pm  |
| Dr. Seuss' How the Grinch Stole Christmas..... | 5pm  |

NOT SHOWN IN IMAX FORMAT

Please help us support our community by bringing a non-perishable food donation to benefit 2nd Harvest Food Bank



# Special Events

- Pearl Harbor Survivors Memorial Service
- First Night Karaoke Competition
- First Night Fountain Lights



# Operations & Attractions

- Holiday Hours of Operation Dec. 21-Jan.4
- Ice Palace, Looff Carrousel, SkyRide and Mini-Golf were open for guests enjoyment.



# Maintenance

- Extreme cold weather repairs
- Holiday Decoration installation





# Marketing

- Holiday Marketing Campaign
  - Cross promote with Recreation
- \$12 Holiday Special
  - Skating & Rental, SkyRide, Carrousel & Golf
- 2014 Season Passes on Sale



# A Note of thanks

- We would like to take the opportunity to thank the Riverfront Park staff for their dedication, knowledge, enthusiasm, and hard work to make 2013 a memorable and very successful year.
- We also could not have done it without the support of the Park Board, RFP Committee the Park Department and City Hall staff.
  - The Management

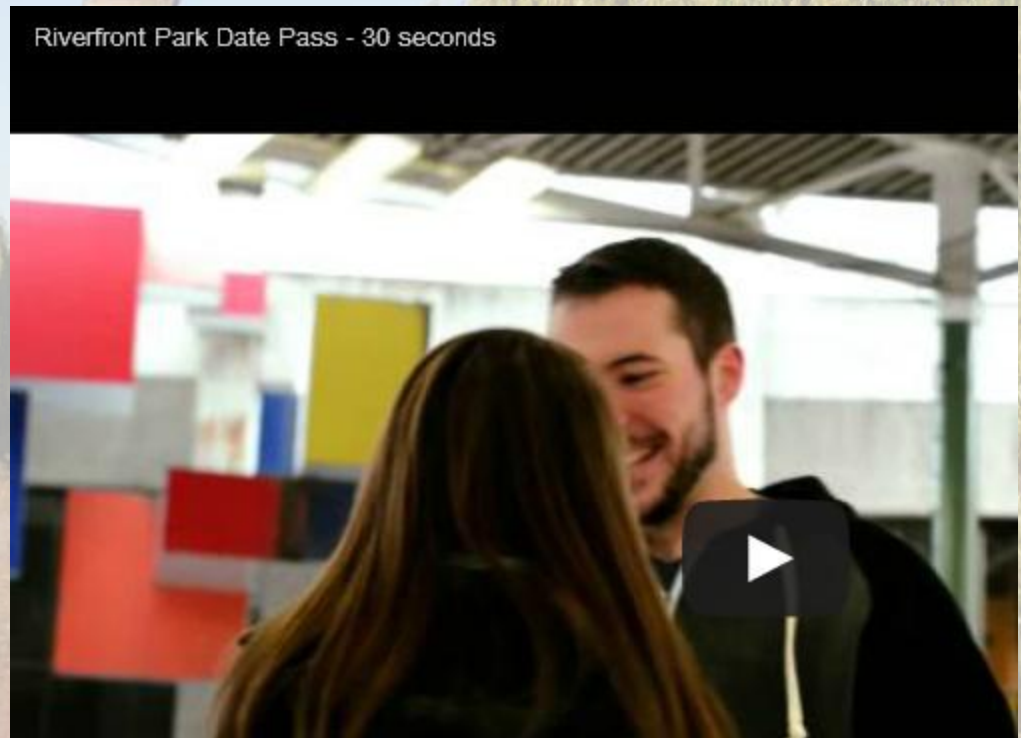
A scenic view of Spokane Riverfront Park. In the foreground, a large weeping willow tree with green and yellowing leaves hangs over the water. The river flows from the left towards the center. In the background, a tall, light-colored clock tower with a red roof stands prominently. To the left, a bridge spans the river, and other buildings are visible in the distance under a clear blue sky.

# **Spokane Riverfront Park**

**2013 Annual Report**

# Awards

- ❖ 2013 IAAPA Brass Ring Marketing Excellence “Best TV Commercial”
- ❖ 2013 Inlander Best Public Art (Red Wagon) and Best Place in the Afternoon with Kids
- ❖ KREM 2’s 2013 Best Landmark (Carrousel) and Best Place to People Watch
- ❖ Visit Spokane’s Best Attraction (Looff Carrousel);
- ❖ Fountain Café, 2013 Mayor’s Urban Design Merit Award”
- ❖ Individual Inland Tourism Awards: Dave Randolph and Sam Song
- ❖ Rated #2 attraction in Spokane on TripAdvisor; 4.5 Star rating (out of 5) average from 441 reviewers, 90% of them rate “Excellent” or “Very Good”.



# Our People

- ❖ All part-time staff: Backbone of our operation.
- ❖ Barbara Ackermann: Cheerleader & Motivator
- ❖ Becky Phillips: Gardener with flowery heart and attitude
- ❖ Cheryl Sieveke: Interior Designer who watches everyone's back all time
- ❖ Chris Orheim: RFP Sales Executive
- ❖ Dale Larsen: Events Ambassador
- ❖ Dave Randolph: Spirits of Riverfront Park
- ❖ Donna Harvey: Trustworthy Banker
- ❖ Jeff Bailey: Sheriff who knows how to make money
- ❖ Jimmy Hacker: Master Fixer and Cleaner
- ❖ Ken Beltran: Twin Spirits of Dave for RFP
- ❖ Misty Smiley and Michelle Whipple: Your smiling neighbors who know how to make great food
- ❖ Wally Harold, Dave Como and Heath Rogers: Three-Musketeer Engineers of RFP
- ❖ Debby Dodson: CPU of operation
- ❖ Sam Song: Admirer and supporter of all people above



# Major Highlights

- ❖ Extensive Master Plan and Citizen Advisory Committee Planning
- ❖ Fountain Café and Restroom Facility completed and operational
- ❖ Broadview Dairy Demolition complete
- ❖ East Havermale Point open for use
- ❖ Huntington Park construction started
- ❖ Kendall Yards, Veteran's Court to Riverfront Park Centennial Trail Upgrades
- ❖ Theme Stream bridge replacement by Avista and Avista PowerHouse and retaining wall painted
- ❖ Fountain Meadow electrical upgrade complete
- ❖ Asphalt repairs throughout the park
- ❖ Public Facilities District Managing Centennial Trail to Division and Floating Stage



# Operation Highlights

- ❖ Staff work together as a team to achieve common goals.
- ❖ Over 60 public events and 376 private rental events
- ❖ Once again, Riverfront Park team produced 4<sup>th</sup> of July celebration
- ❖ 2013 new events: Color Run, Pemco Wednesday Night Movies, Dessert Train, North Pole Express, Holiday Film Festival



# Financial Highlights

- ❖ **Budget: better expenditure management**
- ❖ **2013 Revenue (YTD) is down from 2012 by less than 0.5%**
- ❖ **Fountain Café revenue doubled 2012 revenue, Food Service increased by \$50k, Catering increased by \$15k. Many other Food Service areas have seen decrease.**
- ❖ **Parking revenue increased by \$58**
- ❖ **Carrousel down \$10k, Ice Palace down \$28K, Rides down \$15k, Skyride down \$31k.**
- ❖ **IMAX down from \$246 to \$191 with half opening length.**
- ❖ **Tour Train increased by \$21k, a 33% increase.**
- ❖ **Mini golf also up by \$7k**



# Facilities & Ground Highlights

- ❖ Most light poles are painted
- ❖ Carrousel roof repair contract done, actual work starts in early spring, 2014
- ❖ Clock tower ladder repair contract done, actual work starts in 2014
- ❖ Boiler repair in Carrousel
- ❖ Clock Tower meadow, Fountain meadow and Gondola meadow rehab
- ❖ Over a thousand tulip bulbs planted this fall
- ❖ Carpet repair at upper pavilion
- ❖ New floor matting at pathway and seating area for both summer rides and winter ice skating to enhance customer experience
- ❖ Preservation of Looff Carrousel continued



# Community Outreach & partnerships

- ❖ Park Foundation
- ❖ DSP
- ❖ RPS
- ❖ Visit Spokane
- ❖ Events groups:  
Hoopfest, Bloomsday,  
First Night
- ❖ Second Harvest
- ❖ YMCA



# Staff Retirement & Special Recognition

- ❖ Craig and Don
- ❖ Leroy and Park Board
- ❖ Juliet, Ted and Advisory Committee
- ❖ All other departments
- ❖ My Spokane and other city departments



# AGENDA SHEET FOR PARK BOARD MEETING OF: January 9, 2014



Submitting Division  
Recreation/Entertainment

Contact Person  
Debby Dodson

Phone No.  
625-6623

## **COMMITTEE**

- X Riverfront
- o Golf
- o Recreation
- o Land
- o Urban Forestry
- o North Bank Ad-Hoc
- X Finance

CLERK'S FILE \_\_\_\_\_  
RENEWS \_\_\_\_\_  
CROSS REF \_\_\_\_\_  
ENG \_\_\_\_\_  
BID \_\_\_\_\_  
REQUISITION \_\_\_\_\_

## **AGENDA WORDING:**

Approve contract with IMAX Corp, 2525 Speakman Dr, Mississauga, ON Canada L5K 1B1, in the sum of \$32,500 including Washington State Sales Tax for amended lease agreement providing the IMAX projection system effective March 1, 2014 through September 30, 2014 plus an additional 20 days.

## **BACKGROUND:**

(Attach additional sheet if necessary)

The City entered into an original Lease Agreement dated May 12, 1977 with options to renew for a maximum of (6) six, five-year extensions ending in 2008. An amended annual lease was approved and extended (5) five times. This lease calls for \$20,000 system maintenance fee plus \$12,500 annual rent. 60 Day termination clause.

**RECOMMENDATION:** Approve Contract

|                              |                        |          |
|------------------------------|------------------------|----------|
| <b><u>Fiscal Impact:</u></b> | 1400 54300 76916 54501 | \$32,500 |
| Expenditure                  |                        |          |
| \$32,500                     |                        |          |

**ATTACHMENTS:** Include in Packets:  
On file for Review in Office of City Clerk:

## **SIGNATURES:**

\_\_\_\_\_  
Requestor

\_\_\_\_\_  
Parks Accounting

\_\_\_\_\_  
Legal Department

\_\_\_\_\_  
Director of Parks and Recreation

**DISTRIBUTION:** Parks, Kathleen Keck  
Risk Manager, Tim Dunivant

Parks, Debby Dodson  
Taxes and Lic, Lisa Dillman  
Contractor :  
cmetcalfe@imax.com

---

## **PARK BOARD ACTION:**



## 2013 IMAX Summary

March 8 – September 2

|                  |                   |                |                   |                   |      |
|------------------|-------------------|----------------|-------------------|-------------------|------|
| Revenue:         | \$ 191,065        | Budget:        | \$ 199,700        | (-\$8,635)        | 4.5% |
| <u>Expense*:</u> | <u>\$ 282,323</u> | <u>Budget:</u> | <u>\$ 278,763</u> | <u>(-\$3,560)</u> | 1.3% |
|                  | \$ 91,258         |                | \$ 79,063         | (-\$12,195)       |      |

\*Included full year of Interfund Charges, 6 months of all Pavilion Utilities

\* Indirect costs (55% of labor and benefits) not included

**Concession Revenue: \$30,365**

**Attendance: 28,307**

### Features:



**New Features** Included "Air Racers", "Rocky Mountain Express" & "Great White Shark"

**Back By Popular Demand** Included "Lewis & Clark" & "Dolphins"

Special Events:

5 IMAX Theatre Rentals

First Night Karaoke Competition

Free Holiday Film Festival: 2,018 Attendance



## 2014 IMAX Operational Summary

March 1 – September 30 plus 20 optional days

### 3 New Features

Titans of the Ice Age

Hidden Universe

Kenya

### Back By Popular Demand

Rocky Mountain Express

Great White Shark

TBA

Reviving 2011 KSPS Documentary Series – Tentative including “Reflections by the River: Expo 74”, “Remembering Spokane”, “Sculpted by Floods” and others for weekday showings during the summer.

Researching Beer & Wine License – Will show evening features

Will feature additional free movie nights

Aggressive school marketing

Continue facility marketing

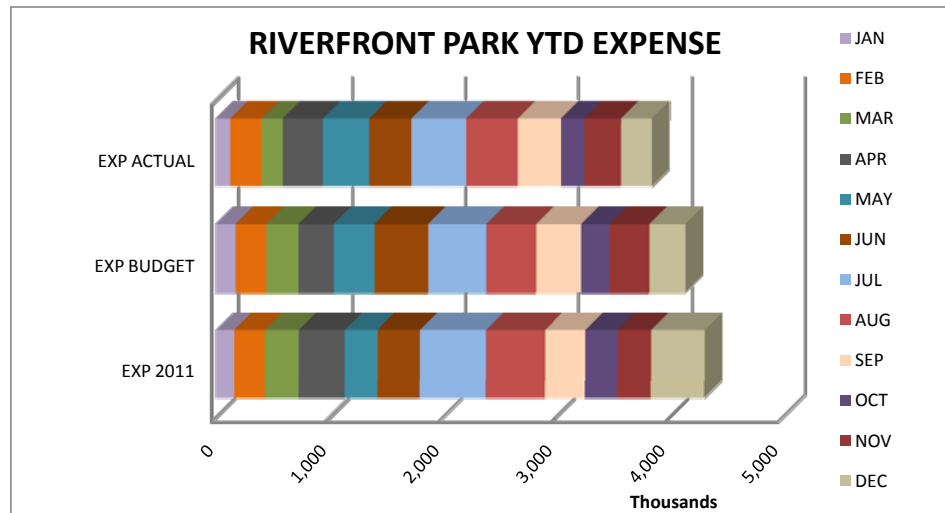
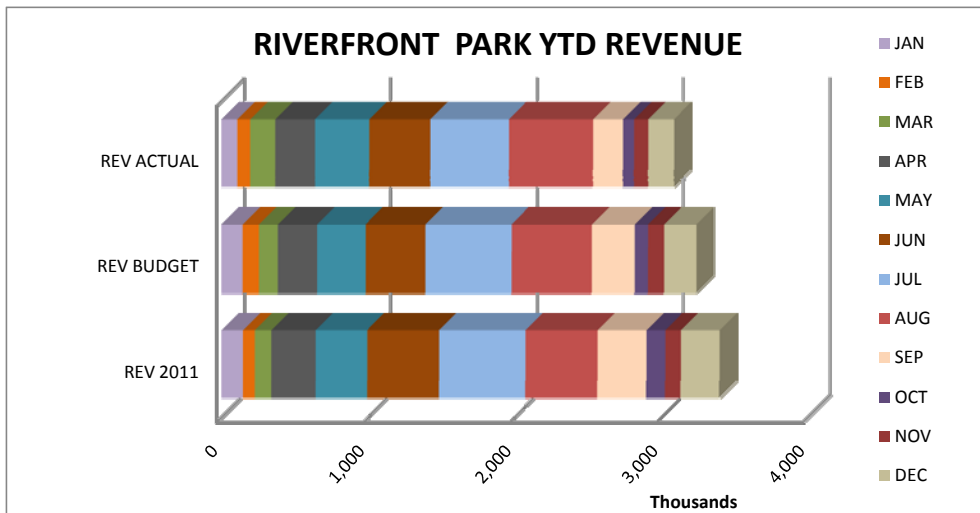
**Items****Amount**

|  |       |
|--|-------|
| Security bicycle and misc. equipment               | 5000  |
| East Pavilion and West Pavilion entrance gate      | 10000 |
| Garbage and recycle container                      | 30000 |
| Reader Board                                       | 25000 |
| Directional signage                                | 15000 |
| Pavilion awning replacement                        | 10000 |
| Portable kiosk for gift sales and promotion        | 10000 |
| Carousel sound system, table chairs and banners    | 10000 |
| Ice Palace heater, water tank and boiler repair    | 12000 |
| Food Service equipment and catering supplies       | 15000 |
| Fountain Café riverside dining seating and fencing | 8000  |

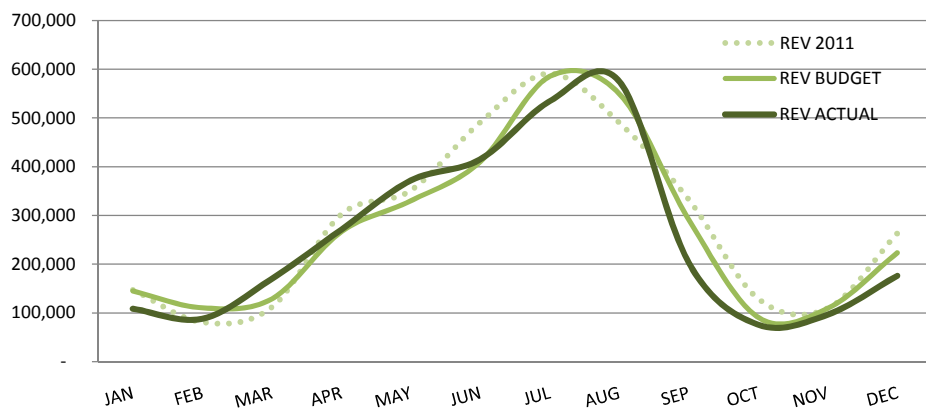
**Total****150000**

# RIVERFRONT DASHBOARD

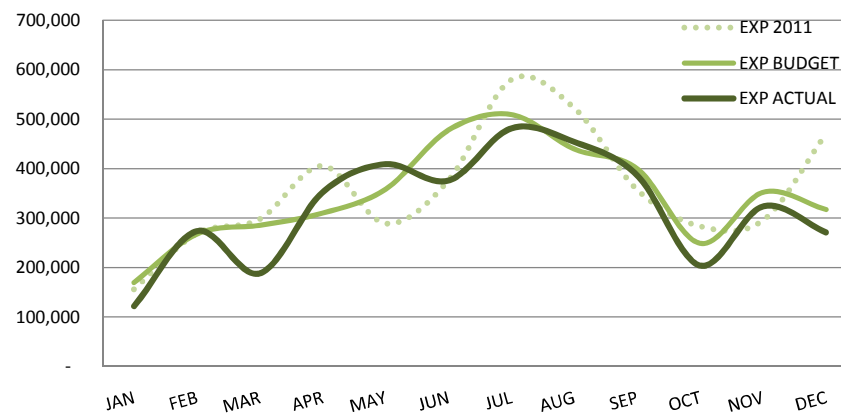
AS OF 1/3/2014



#### RIVERFRONT PARK REVENUE BY MONTH



#### RIVERFRONT PARK EXPENSE BY MONTH

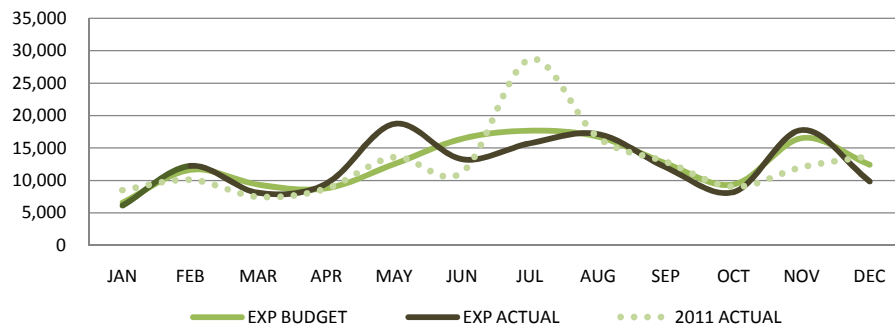




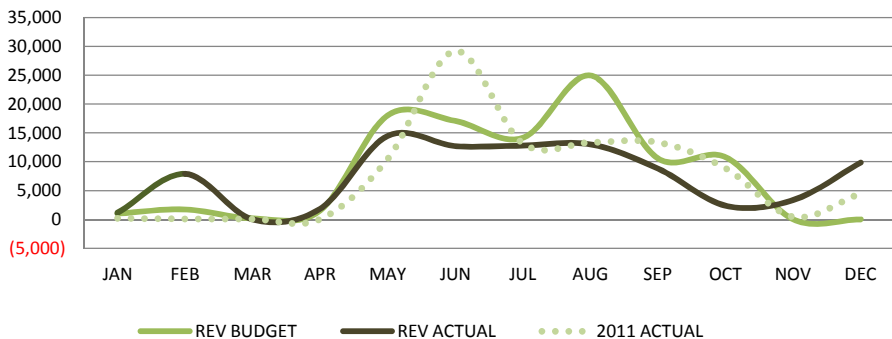
**CITY OF SPOKANE PARKS AND RECREATION  
STATEMENT OF ACTIVITY WITH ANNUAL BUDGET  
RIVERFRONT PARK  
PRELIMINARY DECEMBER, 2013**

|                                | <b>MONTH<br/>ACTUAL</b> | <b>YTD<br/>BUDGET</b> | <b>YTD<br/>ACTUAL</b> | <b>2012 YTD<br/>ACTUAL</b> | <b>2011 YTD<br/>ACTUAL</b> | <b>ANNUAL<br/>BUDGET</b> | <b>% OF<br/>BUDGET</b> | <b>PROJECT<br/>CALC</b> | <b>PROJECT<br/>MGR</b> |
|--------------------------------|-------------------------|-----------------------|-----------------------|----------------------------|----------------------------|--------------------------|------------------------|-------------------------|------------------------|
| <b>Revenue</b>                 | <b>176,045</b>          | <b>3,239,800</b>      | <b>3,084,639</b>      | <b>3,123,250</b>           | <b>3,397,647</b>           | <b>3,239,800</b>         | <b>95%</b>             | <b>95%</b>              | <b>95%</b>             |
| Salaries and Wages             | 114,723                 | 1,866,424             | 1,812,636             | 2,063,287                  | 2,029,148                  | 1,866,424                | 97%                    | 97%                     | 98%                    |
| Personnel Benefits             | 32,053                  | 389,376               | 369,362               | 438,869                    | 391,387                    | 389,376                  | 95%                    | 95%                     | 96%                    |
| Supplies                       | 17,049                  | 473,869               | 395,509               | 357,988                    | 409,671                    | 473,869                  | 83%                    | 83%                     | 88%                    |
| Services and Charges           | 92,893                  | 1,036,689             | 867,900               | 1,152,776                  | 1,123,471                  | 1,036,689                | 84%                    | 84%                     | 89%                    |
| Intergovernment Prof Services  | 574                     | 33,300                | 32,502                | 37,380                     | 41,288                     | 33,300                   | 98%                    | 98%                     | 100%                   |
| Interfund Services             | 13,820                  | 364,002               | 364,668               | 320,704                    | 307,207                    | 364,002                  | 100%                   | 100%                    | 100%                   |
| Reserve for Budget Adjustment  | -                       | (30,000)              | -                     | -                          | -                          | (30,000)                 | 0%                     | 0%                      | 0%                     |
| <b>Expenses</b>                | <b>271,112</b>          | <b>4,133,660</b>      | <b>3,842,576</b>      | <b>4,371,004</b>           | <b>4,302,172</b>           | <b>4,133,660</b>         | <b>93%</b>             | <b>93%</b>              | <b>96%</b>             |
| <b>Net Revenue</b>             | <b>(95,066)</b>         | <b>(893,860)</b>      | <b>(757,938)</b>      | <b>(1,247,754)</b>         | <b>(904,525)</b>           | <b>(893,860)</b>         |                        |                         |                        |
| Transfers In                   |                         |                       |                       |                            |                            | -                        |                        |                         |                        |
| Transfers Out                  | -                       | (334,990)             | (334,991)             | (312,033)                  | (1,525,033)                | (334,990)                | 100%                   | 100%                    | 100%                   |
| <b>Net Transfers</b>           | <b>-</b>                | <b>(334,990)</b>      | <b>(334,991)</b>      | <b>(312,033)</b>           | <b>(1,525,033)</b>         | <b>(334,990)</b>         | <b>100%</b>            | <b>100%</b>             | <b>100%</b>            |
| <b>Net Operations</b>          | <b>(95,066)</b>         | <b>(1,228,850)</b>    | <b>(1,092,929)</b>    | <b>(1,559,787)</b>         | <b>(2,429,558)</b>         | <b>(1,228,850)</b>       |                        |                         |                        |
| <b>Capital Outlay</b>          | <b>(19,566)</b>         | <b>(830,975)</b>      | <b>(593,217)</b>      | <b>(332,768)</b>           | <b>(193,301)</b>           | <b>(830,975)</b>         | <b>71%</b>             | <b>71%</b>              | <b>75%</b>             |
| <b>Fund Balance Inc (Decr)</b> | <b>(114,632)</b>        | <b>(2,059,825)</b>    | <b>(1,686,146)</b>    | <b>(1,892,556)</b>         | <b>(2,622,859)</b>         | <b>(2,059,825)</b>       |                        |                         |                        |
|                                |                         |                       |                       |                            |                            |                          | <b>YTD 100.00%</b>     |                         |                        |

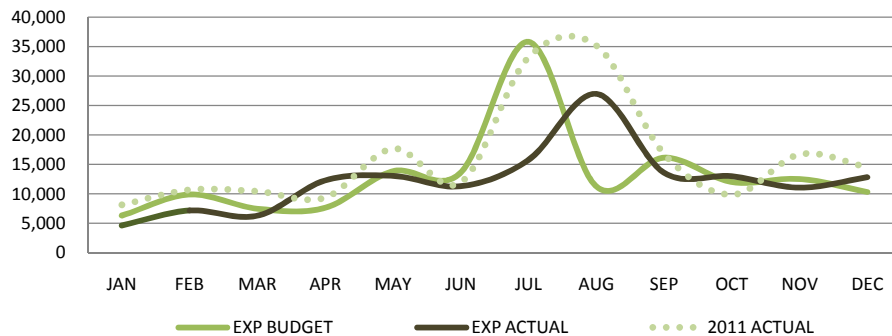
**RFP SECURITY EXPEND BY MONTH**



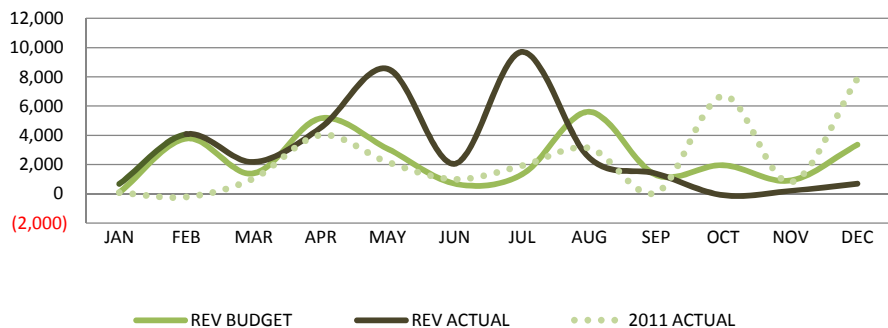
**RFP SPECIAL EVENTS REVENUE BY MONTH**



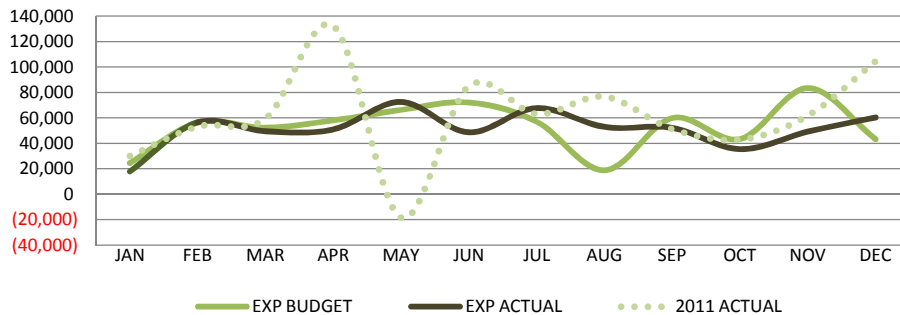
**RFP SPECIAL EVENTS EXPEND BY MONTH**



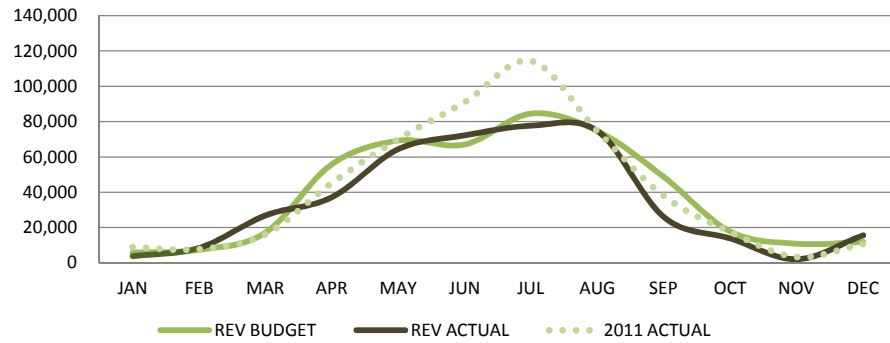
**RFP ADMIN REVENUE BY MONTH**



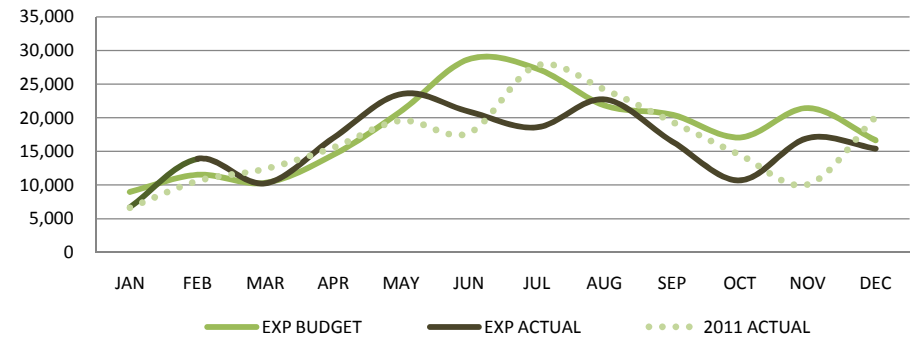
**RFP ADMIN EXPEND BY MONTH**



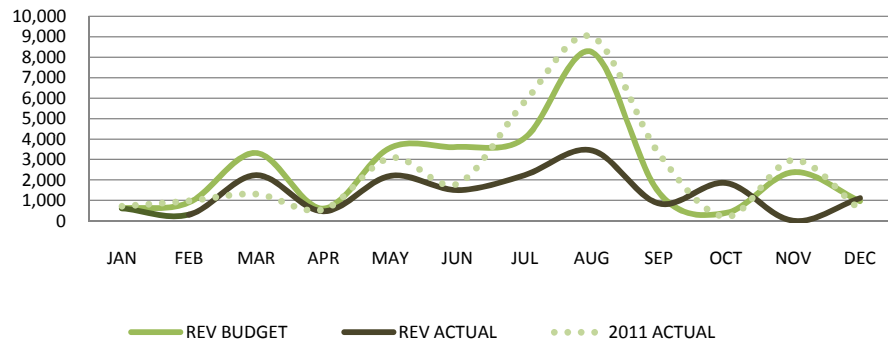
**RFP SKYRIDE REVENUE BY MONTH**



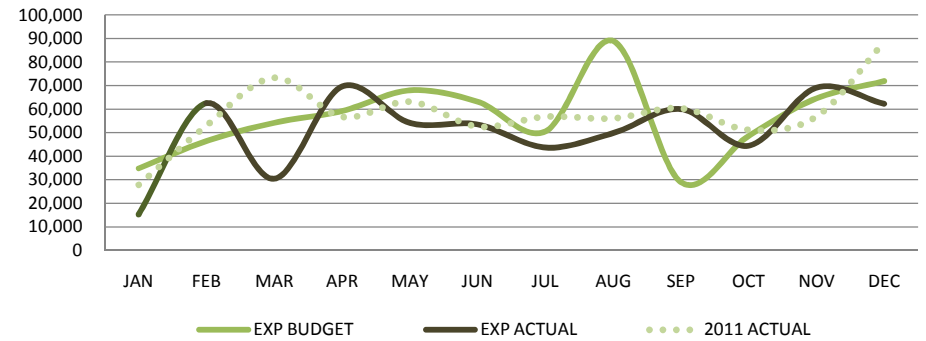
**RFP SKYRIDE EXPEND BY MONTH**



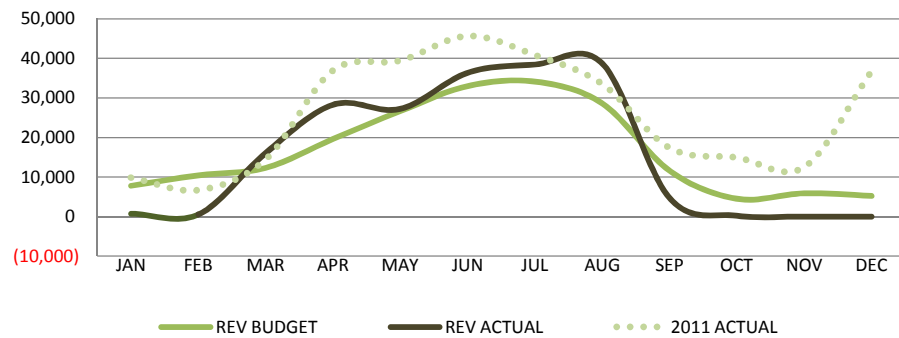
**RFP GENERAL FACILITIES REVENUE BY MONTH**



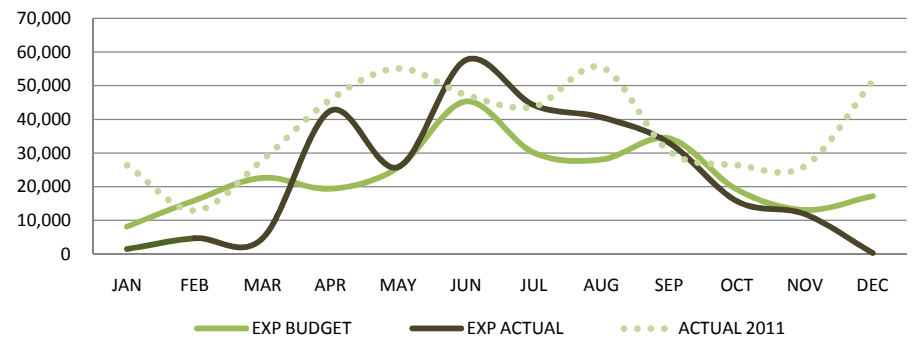
**RFP GENERAL FACILITY EXPEND BY MONTH**



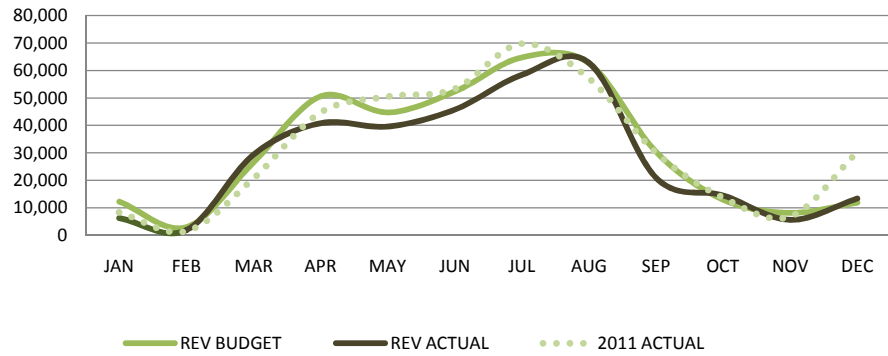
**RFP IMAX REVENUE BY MONTH**



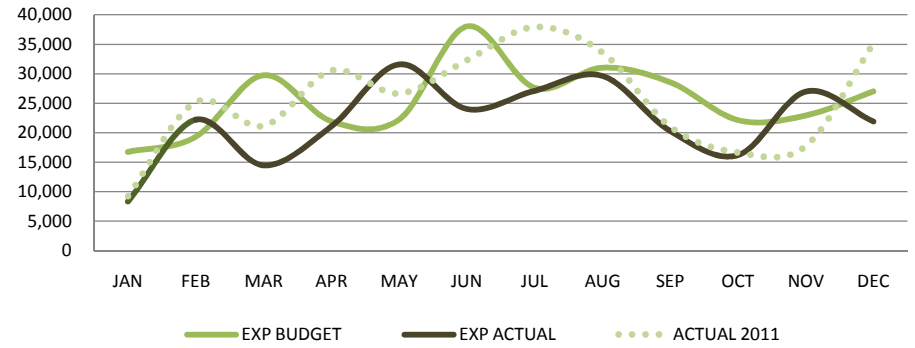
**RFP IMAX EXPEND BY MONTH**



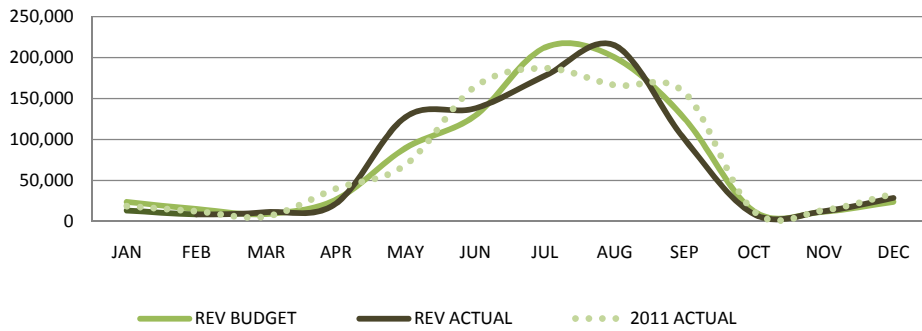
**RFP CARROUSEL REVENUE BY MONTH**



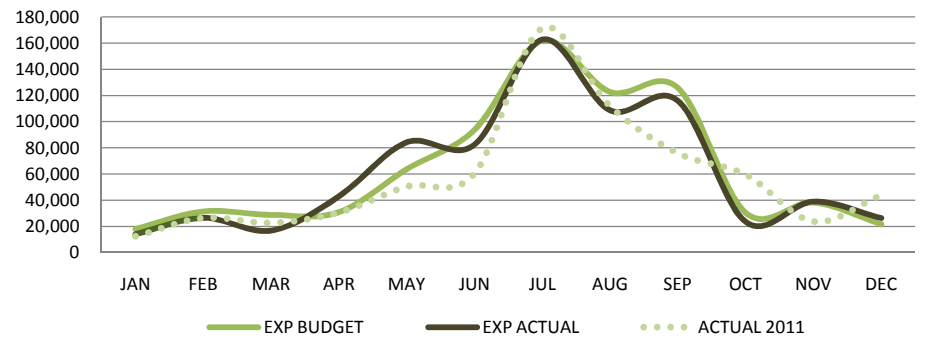
**RFP CARROUSEL EXPEND BY MONTH**



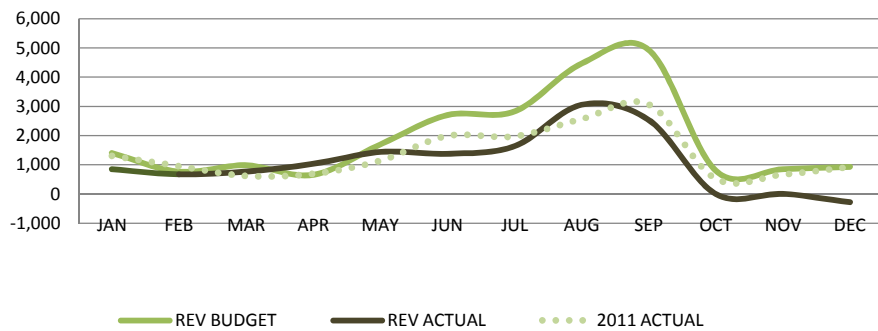
**RFP CONCESSIONS REVENUE BY MONTH**



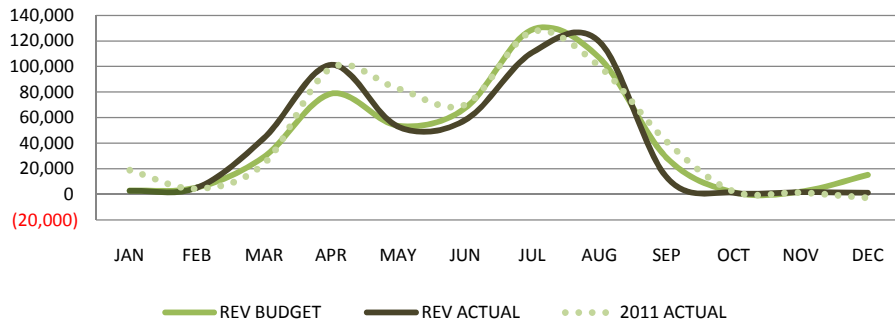
**RFP CONCESSIONS EXPEND BY MONTH**



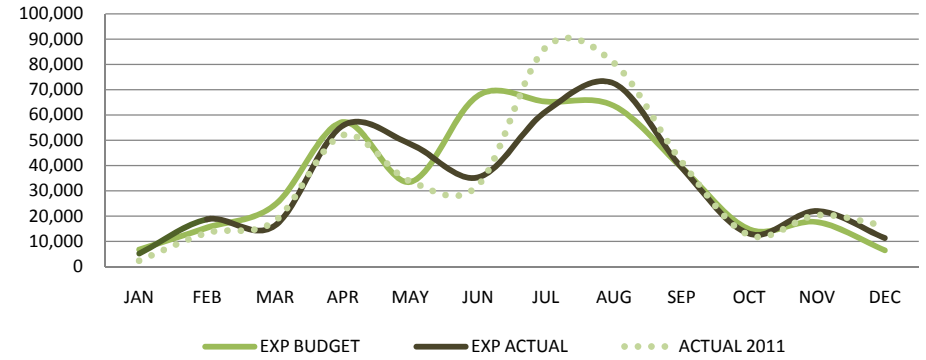
**RFP AMUSEMENT DEVICE REVENUE BY MONTH**



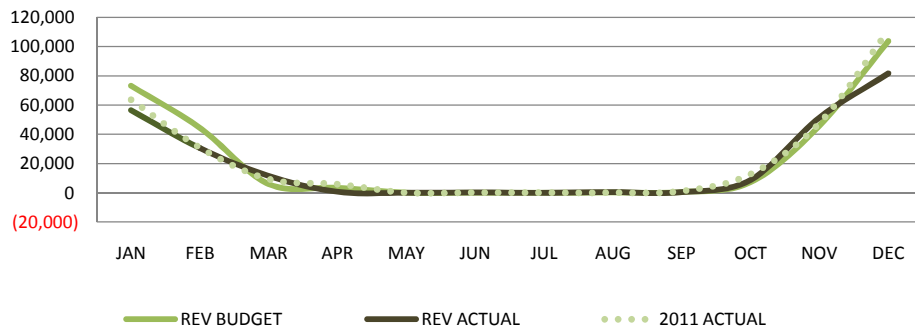
**RFP RIDES REVENUE BY MONTH**



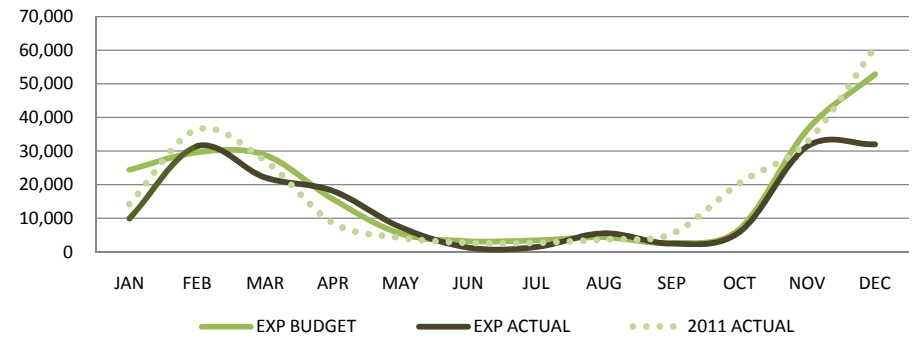
**RFP RIDES EXPEND BY MONTH**



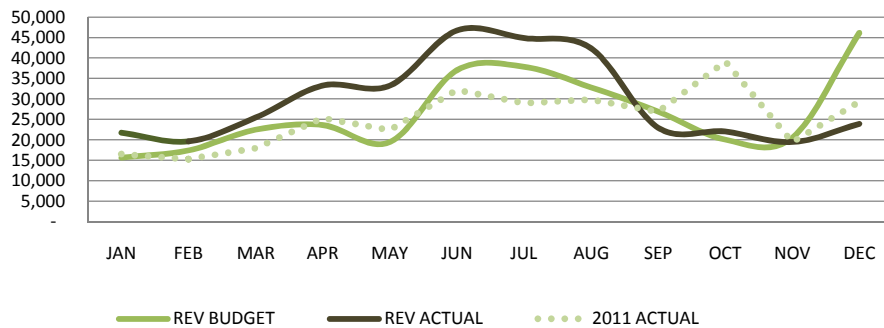
**RFP ICE PALACE REVENUE BY MONTH**



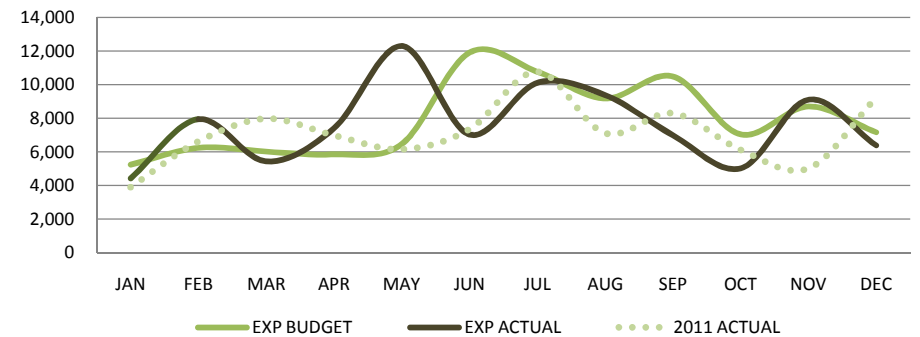
**RFP ICE PALACE EXPEND BY MONTH**



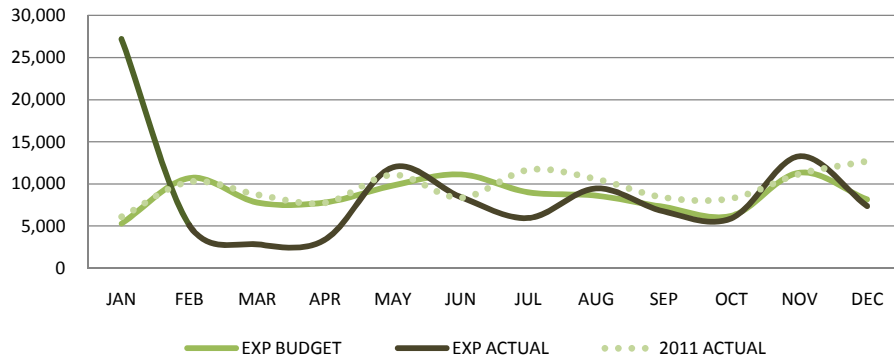
**RFP PARKING REVENUE BY MONTH**



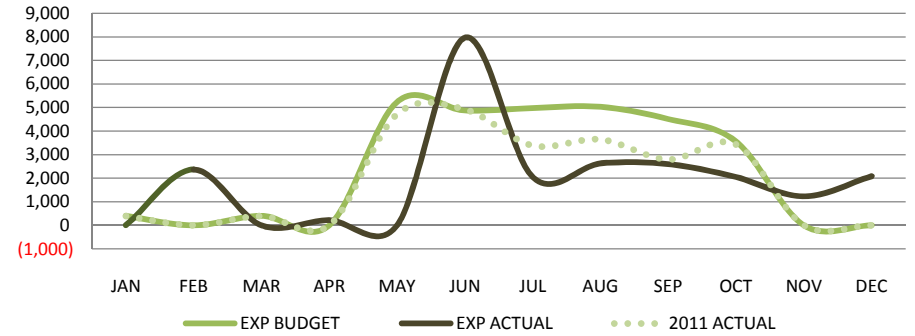
**RFP PARKING EXPEND BY MONTH**



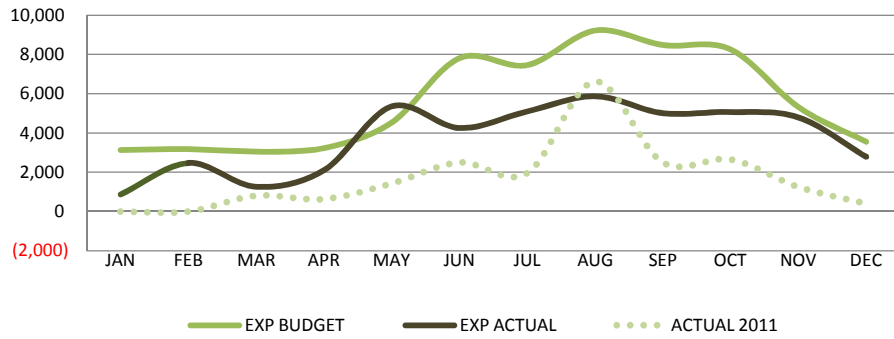
**RFP GROUP SALES EXPEND BY MONTH**



**RFP E. PAVILION EXPEND BY MONTH**



**RFP ROTARY FOUNTAIN EXPEND BY MONTH**



CITY OF SPOKANE PARKS AND RECREATION

RIVERFRONT PARK - MONTHLY REVENUE

|                |            | JAN         | FEB     | MAR     | APR     | MAY     | JUN     | JUL     | AUG     | SEP     | OCT     | NOV     | DEC     | DEC YTD   | TOTAL     |
|----------------|------------|-------------|---------|---------|---------|---------|---------|---------|---------|---------|---------|---------|---------|-----------|-----------|
| SECURITY       | REV 2011   | -           | 60      | -       | -       | 55      | -       | -       | 138     | 83      | -       | 55      | 441     | 832       | 832       |
|                | REV BUDGET | -           | -       | -       | -       | 151     | 264     | 358     | 226     | -       | -       | -       | -       | 1,000     | 1,000     |
|                | REV ACTUAL | -           | -       | 86      | -       | 61      | -       | -       | 146     | -       | 334     | -       | 61      | 687       | 687       |
| SPECIAL EVENTS | REV 2011   | 203         | 100     | 75      | 40      | 10,490  | 29,176  | 13,139  | 13,330  | 13,348  | 8,878   | 456     | 4,499   | 93,734    | 93,734    |
|                | REV BUDGET | 1,004       | 1,722   | 182     | 1,539   | 18,030  | 17,054  | 14,145  | 24,965  | 10,566  | 10,794  | -       | -       | 100,000   | 100,000   |
|                | REV ACTUAL | 1,178       | 7,913   | -       | 1,838   | 14,476  | 12,713  | 12,793  | 13,011  | 8,800   | 2,380   | 3,362   | 9,853   | 88,317    | 88,317    |
| ADMIN          | REV 2011   | 85          | (208)   | 1,055   | 4,027   | 2,173   | 1,003   | 1,927   | 3,127   | 79      | 6,711   | 795     | 7,915   | 28,689    | 28,689    |
|                | REV BUDGET | 74          | 3,780   | 1,383   | 5,164   | 3,082   | 690     | 1,313   | 5,612   | 1,284   | 1,956   | 902     | 3,359   | 28,600    | 28,600    |
|                | REV ACTUAL | 661         | 4,085   | 2,180   | 4,523   | 8,559   | 2,062   | 9,715   | 2,487   | 1,390   | (90)    | 204     | 705     | 36,479    | 36,479    |
| SKYRIDE        | REV 2011   | 8,879       | 7,816   | 16,145  | 45,256  | 70,165  | 90,991  | 114,363 | 74,612  | 37,951  | 17,562  | 3,354   | 10,822  | 497,916   | 497,916   |
|                | REV BUDGET | 5,835       | 7,412   | 17,126  | 55,965  | 69,279  | 67,055  | 84,611  | 74,696  | 48,606  | 17,678  | 10,863  | 11,873  | 471,000   | 471,000   |
|                | REV ACTUAL | 3,765       | 8,543   | 26,976  | 37,260  | 64,506  | 72,236  | 77,739  | 74,725  | 26,001  | 13,905  | 2,178   | 15,770  | 423,605   | 423,605   |
| FACILITIES     | REV 2011   | 714         | 974     | 1,305   | 555     | 3,079   | 1,811   | 5,817   | 8,999   | 3,284   | 205     | 2,965   | 550     | 30,258    | 30,258    |
|                | REV BUDGET | 612         | 894     | 3,320   | 596     | 3,570   | 3,608   | 4,036   | 8,258   | 1,390   | 381     | 2,374   | 960     | 30,000    | 30,000    |
|                | REV ACTUAL | 608         | 303     | 2,232   | 470     | 2,197   | 1,503   | 2,232   | 3,445   | 850     | 1,849   | 3       | 1,113   | 16,804    | 16,804    |
| IMAX           | REV 2011   | 9,874       | 6,725   | 14,485  | 36,952  | 39,458  | 45,668  | 40,845  | 33,511  | 17,383  | 14,946  | 12,602  | 36,835  | 309,282   | 309,282   |
|                | REV BUDGET | 7,774       | 10,437  | 12,329  | 19,622  | 26,667  | 32,995  | 34,114  | 28,596  | 11,574  | 4,481   | 5,890   | 5,221   | 199,700   | 199,700   |
|                | REV ACTUAL | 696         | 524     | 16,088  | 28,273  | 27,197  | 36,335  | 38,397  | 38,654  | 4,671   | 221     | 10      | (8)     | 191,058   | 191,058   |
| CARROUSEL      | REV 2011   | 8,314       | 1,471   | 20,577  | 44,660  | 50,459  | 53,248  | 69,739  | 57,113  | 30,032  | 13,661  | 6,775   | 30,241  | 386,290   | 386,290   |
|                | REV BUDGET | 12,255      | 2,936   | 26,499  | 50,581  | 44,705  | 52,300  | 64,759  | 62,611  | 30,348  | 12,963  | 8,177   | 11,867  | 380,000   | 380,000   |
|                | REV ACTUAL | 6,240       | 1,861   | 29,381  | 40,835  | 39,625  | 45,764  | 58,448  | 62,853  | 20,914  | 14,515  | 5,626   | 13,422  | 339,482   | 339,482   |
| CONCESSIONS    | REV 2011   | 18,606      | 12,209  | 5,930   | 40,003  | 69,188  | 164,953 | 187,273 | 166,547 | 157,439 | 11,893  | 13,509  | 33,610  | 881,162   | 881,162   |
|                | REV BUDGET | 24,167      | 15,300  | 9,297   | 26,843  | 89,686  | 129,262 | 212,598 | 200,512 | 126,107 | 12,553  | 12,051  | 24,122  | 882,500   | 882,500   |
|                | REV ACTUAL | 13,434      | 8,488   | 11,273  | 21,622  | 127,529 | 138,177 | 177,833 | 215,115 | 100,726 | 8,828   | 12,351  | 28,683  | 864,058   | 864,058   |
| AMUSEMENT      | REV 2011   | 1,307       | 952     | 617     | 691     | 1,137   | 1,990   | 1,974   | 2,568   | 3,068   | 519     | 662     | 921     | 16,405    | 16,405    |
| DEVICES        | REV BUDGET | 1,403       | 767     | 983     | 655     | 1,694   | 2,700   | 2,825   | 4,462   | 4,934   | 796     | 850     | 930     | 23,000    | 23,000    |
|                | REV ACTUAL | 851         | 673     | 768     | 1,033   | 1,439   | 1,379   | 1,636   | 3,054   | 2,535   | 3       | 3       | (278)   | 13,096    | 13,096    |
|                | REV 2011   | 18,888      | 4,358   | 24,032  | 98,777  | 82,674  | 70,125  | 127,276 | 100,140 | 41,346  | 2,269   | 1,360   | (2,792) | 568,454   | 568,454   |
| RIDES          | REV BUDGET | 2,897       | 5,229   | 29,183  | 78,669  | 53,654  | 67,408  | 128,808 | 106,631 | 28,636  | 1,616   | 2,078   | 15,191  | 520,000   | 520,000   |
|                | REV ACTUAL | 2,700       | 5,185   | 43,969  | 101,248 | 52,998  | 58,158  | 110,880 | 119,330 | 13,548  | 1,273   | 1,837   | 1,290   | 512,416   | 512,416   |
|                | REV 2011   | 63,546      | 30,764  | 9,253   | 5,806   | 27      | 79      | 2       | 2       | 1,078   | 12,690  | 47,465  | 110,800 | 281,513   | 281,513   |
| ICE PALACE     | REV BUDGET | 73,149      | 44,400  | 5,893   | 3,404   | 3       | 3       | 3       | 63      | 426     | 7,181   | 45,814  | 103,664 | 284,000   | 284,000   |
|                | REV ACTUAL | 56,462      | 30,570  | 11,480  | 576     | 3       | 205     | (18)    | 398     | 335     | 8,792   | 51,407  | 81,550  | 241,758   | 241,758   |
|                | REV 2011   | 16,479      | 15,285  | 17,921  | 25,258  | 22,390  | 32,169  | 28,982  | 29,820  | 26,887  | 39,120  | 19,415  | 29,386  | 303,112   | 303,112   |
| PARKING        | REV BUDGET | 15,651      | 17,415  | 22,491  | 23,617  | 19,454  | 36,999  | 37,865  | 32,849  | 26,922  | 20,067  | 20,511  | 46,159  | 320,000   | 320,000   |
|                | REV ACTUAL | 21,722      | 19,585  | 25,408  | 33,231  | 33,206  | 46,679  | 44,842  | 42,357  | 22,940  | 22,000  | 19,403  | 23,886  | 355,258   | 355,258   |
|                | TOTAL REV  | 2011 ACTUAL | 146,895 | 80,505  | 111,395 | 302,025 | 351,296 | 491,214 | 591,336 | 489,907 | 331,978 | 128,454 | 109,413 | 263,229   | 3,397,647 |
| TOTAL REV      | REV BUDGET | 144,822     | 110,293 | 128,686 | 266,655 | 329,974 | 410,339 | 585,435 | 549,481 | 290,793 | 90,467  | 109,509 | 223,345 | 3,239,800 | 3,239,800 |
| TOTAL REV      | REV ACTUAL | 108,316     | 87,729  | 169,839 | 270,908 | 371,796 | 415,210 | 534,495 | 575,574 | 202,711 | 75,630  | 96,384  | 176,045 | 3,084,639 | 3,084,639 |

| CITY OF SPOKANE PARKS AND RECREATION   |             |         |         |         |         |          |         |         |         |         |         |         |         |           | -         |
|--|-------------|---------|---------|---------|---------|----------|---------|---------|---------|---------|---------|---------|---------|-----------|-----------|
| RIVERFRONT PARK - MONTHLY EXPENDITURES |             |         |         |         |         |          |         |         |         |         |         |         |         |           | -         |
|  |             | JAN     | FEB     | MAR     | APR     | MAY      | JUN     | JUL     | AUG     | SEP     | OCT     | NOV     | DEC     | DEC YTD   | TOTAL     |
| SECURITY                               | EXP 2011    | 8,480   | 10,075  | 7,444   | 8,702   | 13,579   | 11,214  | 28,703  | 16,631  | 12,861  | 8,987   | 12,022  | 13,726  | 152,425   | 152,425   |
|  | EXP BUDGET  | 6,550   | 11,619  | 9,334   | 8,752   | 12,509   | 16,429  | 17,671  | 16,722  | 12,610  | 9,363   | 16,513  | 12,395  | 150,467   | 150,467   |
|  | EXP ACTUAL  | 6,132   | 12,250  | 8,083   | 9,506   | 18,737   | 13,275  | 15,744  | 17,166  | 12,017  | 8,216   | 17,789  | 9,841   | 148,754   | 148,754   |
| SPECIAL EVENT                          | EXP 2011    | 8,156   | 10,700  | 10,437  | 9,384   | 17,699   | 11,937  | 33,224  | 35,185  | 16,792  | 9,874   | 16,730  | 14,555  | 194,673   | 194,673   |
|  | EXP BUDGET  | 6,356   | 9,921   | 7,522   | 7,668   | 13,882   | 13,626  | 35,829  | 11,312  | 16,177  | 12,045  | 12,566  | 10,353  | 157,257   | 157,257   |
|  | EXP ACTUAL  | 4,664   | 7,205   | 6,316   | 12,312  | 13,088   | 11,324  | 15,779  | 27,011  | 13,625  | 13,006  | 11,083  | 12,846  | 148,259   | 148,259   |
| ADMINISTRATION                         | EXP 2011    | 29,970  | 53,179  | 59,367  | 132,183 | (18,479) | 84,887  | 63,028  | 76,719  | 51,124  | 42,875  | 61,659  | 104,347 | 740,858   | 740,858   |
|  | EXP BUDGET  | 24,576  | 56,297  | 52,296  | 58,085  | 66,298   | 72,168  | 57,135  | 18,853  | 59,941  | 43,384  | 83,489  | 43,279  | 635,801   | 635,801   |
|  | EXP ACTUAL  | 17,834  | 56,444  | 49,525  | 50,881  | 72,540   | 48,641  | 67,755  | 52,901  | 52,161  | 35,418  | 49,216  | 60,384  | 613,700   | 613,700   |
| SKYRIDE                                | EXP 2011    | 6,635   | 10,624  | 12,416  | 15,577  | 19,588   | 17,732  | 27,761  | 24,213  | 19,407  | 14,495  | 10,107  | 20,123  | 198,678   | 198,678   |
|  | EXP BUDGET  | 8,991   | 11,543  | 10,346  | 14,488  | 20,983   | 28,708  | 27,331  | 21,857  | 20,469  | 17,085  | 21,454  | 16,667  | 219,922   | 219,922   |
|  | EXP ACTUAL  | 6,673   | 13,897  | 10,231  | 16,981  | 23,533   | 20,918  | 18,564  | 22,732  | 16,459  | 10,672  | 16,977  | 15,396  | 193,032   | 193,032   |
| FACILITIES                             | EXP 2011    | 27,781  | 52,984  | 73,292  | 56,706  | 63,164   | 52,572  | 56,762  | 56,077  | 60,344  | 51,151  | 56,842  | 88,565  | 696,238   | 696,238   |
|  | EXP BUDGET  | 34,808  | 46,400  | 54,195  | 59,143  | 67,947   | 63,181  | 50,502  | 88,998  | 29,004  | 48,596  | 64,542  | 71,908  | 679,224   | 679,224   |
|  | EXP ACTUAL  | 15,205  | 62,478  | 30,393  | 69,598  | 54,164   | 53,500  | 43,722  | 49,793  | 60,014  | 44,450  | 69,092  | 62,271  | 614,679   | 614,679   |
| IMAX                                   | EXP 2011    | 26,328  | 12,902  | 27,993  | 45,881  | 55,157   | 47,286  | 43,798  | 55,526  | 30,508  | 26,440  | 26,128  | 51,349  | 449,295   | 449,295   |
|  | EXP BUDGET  | 8,100   | 15,963  | 22,623  | 19,364  | 25,666   | 45,301  | 30,073  | 28,027  | 34,314  | 19,078  | 13,056  | 17,196  | 278,763   | 278,763   |
|  | EXP ACTUAL  | 1,487   | 4,701   | 4,642   | 42,510  | 25,829   | 57,601  | 44,228  | 40,579  | 32,958  | 15,654  | 11,841  | 292     | 282,323   | 282,323   |
| CARROUSEL                              | EXP 2011    | 9,207   | 25,175  | 21,143  | 30,541  | 26,652   | 32,309  | 37,936  | 33,589  | 21,005  | 16,624  | 17,745  | 35,203  | 307,129   | 307,129   |
|  | EXP BUDGET  | 16,732  | 19,292  | 29,747  | 21,932  | 22,209   | 38,030  | 27,612  | 31,028  | 28,566  | 22,131  | 22,915  | 27,010  | 307,206   | 307,206   |
|  | EXP ACTUAL  | 8,311   | 22,193  | 14,465  | 21,074  | 31,623   | 24,036  | 27,124  | 29,655  | 20,306  | 16,185  | 26,996  | 21,900  | 263,868   | 263,868   |
| CONCESSIONS                            | EXP 2011    | 12,559  | 26,528  | 22,749  | 30,599  | 50,446   | 60,366  | 171,349 | 111,937 | 76,031  | 59,615  | 23,805  | 43,861  | 689,846   | 689,846   |
|  | EXP BUDGET  | 17,843  | 31,265  | 28,677  | 30,674  | 63,506   | 93,631  | 161,949 | 122,577 | 125,709 | 30,243  | 38,115  | 21,504  | 765,693   | 765,693   |
|  | EXP ACTUAL  | 13,919  | 26,478  | 16,685  | 42,863  | 84,195   | 82,417  | 162,791 | 108,727 | 115,980 | 23,396  | 38,921  | 26,300  | 742,671   | 742,671   |
| AMUSEMENT DEVEP                        | EXP 2011    | -       | -       | -       | -       | -        | -       | -       | -       | -       | -       | -       | -       | -         | -         |
|  | EXP BUDGET  | -       | -       | -       | -       | -        | -       | -       | -       | -       | -       | -       | -       | -         | -         |
|  | EXP ACTUAL  | -       | -       | -       | -       | -        | -       | -       | -       | -       | -       | -       | -       | -         | -         |
| RIDES                                  | EXP 2011    | 2,327   | 13,350  | 18,012  | 52,005  | 33,734   | 32,259  | 86,835  | 80,668  | 41,521  | 12,401  | 20,373  | 16,183  | 409,669   | 409,669   |
|  | EXP BUDGET  | 6,774   | 15,407  | 24,431  | 57,199  | 33,536   | 67,770  | 65,323  | 63,668  | 39,292  | 14,758  | 17,638  | 6,418   | 412,212   | 412,212   |
|  | EXP ACTUAL  | 5,125   | 18,690  | 16,151  | 55,718  | 48,491   | 35,298  | 61,471  | 72,535  | 39,255  | 12,963  | 21,975  | 11,270  | 398,942   | 398,942   |
| ICE PALACE                             | EXP 2011    | 14,200  | 36,383  | 27,143  | 8,659   | 4,231    | 2,714   | 2,712   | 3,712   | 5,408   | 20,469  | 32,788  | 60,870  | 219,288   | 219,288   |
|  | EXP BUDGET  | 24,452  | 29,601  | 28,833  | 15,694  | 5,492    | 3,264   | 3,477   | 4,414   | 2,687   | 6,830   | 36,320  | 52,802  | 213,867   | 213,867   |
|  | EXP ACTUAL  | 9,981   | 31,462  | 22,139  | 18,153  | 7,356    | 1,300   | 1,440   | 5,570   | 2,466   | 5,897   | 31,368  | 31,988  | 169,120   | 169,120   |
| PARKING                                | EXP 2011    | 3,897   | 6,616   | 7,978   | 6,983   | 6,149    | 7,346   | 10,775  | 7,113   | 8,297   | 6,120   | 5,015   | 9,228   | 85,517    | 85,517    |
|  | EXP BUDGET  | 5,244   | 6,244   | 6,021   | 5,854   | 6,470    | 11,908  | 10,770  | 9,175   | 10,481  | 7,039   | 8,701   | 7,163   | 95,068    | 95,068    |
|  | EXP ACTUAL  | 4,427   | 7,938   | 5,438   | 7,407   | 12,282   | 7,027   | 10,100  | 9,373   | 6,986   | 5,024   | 9,096   | 6,380   | 91,478    | 91,478    |
| GROUP SALES                            | EXP 2011    | 6,100   | 10,238  | 8,726   | 7,758   | 11,074   | 8,354   | 11,656  | 10,566  | 8,385   | 8,279   | 11,181  | 12,696  | 115,014   | 115,014   |
|  | EXP BUDGET  | 5,295   | 10,710  | 7,802   | 7,817   | 9,811    | 11,144  | 9,017   | 8,623   | 7,285   | 6,237   | 11,355  | 8,156   | 103,253   | 103,253   |
|  | EXP ACTUAL  | 27,199  | 5,095   | 2,844   | 3,383   | 11,973   | 8,473   | 5,962   | 9,471   | 6,744   | 5,926   | 13,290  | 7,377   | 107,737   | 107,737   |
| E. PAVILION                            | EXP 2011    | 388     | -       | 388     | -       | 4,717    | 4,914   | 3,379   | 3,643   | 2,789   | 3,426   | -       | -       | 23,643    | 23,643    |
|  | EXP BUDGET  | 406     | -       | 406     | -       | 5,239    | 4,875   | 4,978   | 5,030   | 4,511   | 3,557   | -       | -       | 29,000    | 29,000    |
|  | EXP ACTUAL  | -       | 2,371   | -       | 222     | -        | 7,971   | 2,053   | 2,631   | 2,601   | 2,054   | 1,229   | 2,090   | 23,222    | 23,222    |
| FOUNTAIN                               | EXP 2011    | -       | -       | 806     | 636     | 1,427    | 2,501   | 1,953   | 6,621   | 2,502   | 2,657   | 1,258   | 402     | 20,762    | 20,762    |
|  | EXP BUDGET  | 3,129   | 3,177   | 3,049   | 3,228   | 4,530    | 7,814   | 7,462   | 9,226   | 8,487   | 8,259   | 5,320   | 3,547   | 67,227    | 67,227    |
|  | EXP ACTUAL  | 857     | 2,465   | 1,251   | 2,094   | 5,344    | 4,242   | 5,086   | 5,862   | 4,999   | 5,058   | 4,786   | 2,777   | 44,821    | 44,821    |
| TOTAL EXP                              | 2011 ACTUAL | 156,028 | 268,753 | 297,895 | 405,612 | 289,140  | 376,390 | 579,870 | 522,200 | 356,973 | 283,411 | 295,653 | 470,247 | 4,302,171 | 4,302,171 |
| TOTAL EXP                              | EXP BUDGET  | 169,257 | 267,438 | 285,281 | 309,899 | 358,080  | 477,848 | 509,128 | 439,509 | 399,534 | 248,605 | 351,983 | 317,098 | 4,133,660 | 4,133,660 |
| TOTAL EXP                              | EXP ACTUAL  | 121,813 | 273,669 | 188,162 | 352,701 | 409,155  | 376,022 | 481,818 | 454,006 | 386,570 | 203,920 | 323,660 | 271,081 | 3,842,577 | 3,842,577 |