



# Special meeting of the Spokane Park Board Retreat

9:10 a.m. Friday, May 8, 2026  
In-person at the Looff Carrousel Event Room

## Park Board Members

- X Bob Anderson – President
- X Barb Richey – Vice President
- X Garrett Jones – Secretary
- X Greta Gilman
- X Sally Lodato
- Gerry Sperling (*absent/excused*)
- X Doug Kelley
- X Lindsey Shaw
- X Lee Williams
- [Vacant]
- [Vacant]
- X Paul Dillon – City Council liaison

## Parks Staff

- Rich Lentz
- Carl Strong
- Mark Poirier
- Jennifer Papich
- Jonathan Moog
- Nick Hamad
- Angel Spell
- Jason Conley
- Al Vorderbrueggen
- Fianna Dickson
- Amy Lindsey
- Briana Ruffing
- Sarah Deatrich

## Guests

- Travis Schulhauser
- Rick Romero

## City Staff

- Megan Kapaun
- Mayor Brown

## MINUTES

1. **Call to order / Roll call:** Bob Anderson  
The meeting was called to order at 9:10 a.m. See above for attendance.

2. **Special discussion:**

- A. [Public Records Refresher](#) – Legal, Megan Kapaun

Megan shared a presentation about the Open Public Records Act (OPRA) and the Open Public Meetings Act (OPMA). She reminded everyone that the public has the right to access public records. Public records are everything in writing which is prepared, owned, used, or retained by any state or local agency, and is also contains information that relates to the conduct or government, or the performance of any governmental or proprietary function.

She reminded the group that nearly all communications related to City business are public records. This includes emails, texts, Teams messages, voicemails, and documents. Drafts and notes are also disclosable.

Megan also briefly spoke about the OPMA and reminded board members that when a majority or members are present, it's construed as a public meeting.

- B. [Together Spokane Update](#) – Nick Hamad and Travis Schulhauser

Nick and Travis gave a presentation regarding the status of Together Spokane projects. They reminded everyone that the partnership between SPS and Parks does much more for the city than separate initiatives would have, and alleviates duplication in work.

As a reminder, Nick pointed out the individual types of projects Parks will be responsible for, and the projects SPS will take on.

Parks has already begun bidding and contracting work on 10 projects, and 2027 projects are to be presented to the Park Board in fall of 2026. The new Meadowglen Park being a top project.

SPS is rebuilding Adams Elementary with a new integrated Boys and Girls club, modernizing NC High School including sports field improvements and parking expansion, and constructing a new SPS trades high school and SCC.

Jointly, Parks and SPS will work on all-weather field lighting at Shadle and two fields to be announced, major sports complex expansion at Merkel, safety enhancements and added rangers, annual minor park and school improvements, and Madison school and recreation center at Franklin Park.

Currently, 16 broken components are being replaced at parks, as well as 56 playgrounds being topped off with new chips.

Replacements taking place at parks include park restrooms and playground upgrades at Coeur d'Alene, Harmon, and Lincoln. Engagement will come to neighborhoods, and construction should begin in Spring 2027.

Communications will continue through [TogetherSpokane.com](https://www.together-spokane.com) (take surveys, leave comments, etc.), social media, QR code signs, flyers/newsletters, booths, and more.

Lindsey Shaw asked if there was a place on the surveys where citizens could comment on things not included in the survey. Nick informed her that on large projects such as restrooms, playgrounds, and sport courts, there is an opportunity for the public to leave comments/questions/suggestions.

Sally Lodato questioned if there is concern about saturation where sport courts are concerned with so many existing in outlying areas. Nick said Spokane doesn't lack field area, it lacks fields that can stand up to inclement weather. Out of approximately 20 field projects planned, only about six are new.

Greta Gilman inquired about schools being built on park property. Nick assured her that no work of this sort would be done without approval from the Land Committee and the Park Board.

Bob commented that so far talk of regional tournaments has focused on soccer and asked whether there is a plan to bring in other sport tournaments such as baseball. Garrett said there is an opportunity to program for baseball/softball on all-weather lit fields and there need to be conversations with user groups.

### C. Park Board Updates/Questions for Staff – Barb Richey

Since a few minutes remained between the Together Spokane Update and the River Loop Update, Barb Richey used the opportunity to ask questions from the Board.

**Question:** What is the status of the Paw Park and the relationship between Parks and the Spokane Humane Society?

**Answer:** Nick Hamad responded that Parks is working with the Building/Permitting Department on permitting for the project permits are expected early this month. Bidding the project is slated for later this month, as well, and building should begin in July/August.

Lindsey Shaw stated that she had heard of concern over lack of communication. Nick said Parks will work to address it.

**Question:** Are we on task with the zipline, and will it be operational during the winter?

**Answer:** Jon Moog responded that Parks is close to breaking ground on the zipline, beginning at Red Band Park. It is slated to open this summer. Hours of operation will follow the Sky Ride hours, which are typically 11:00 a.m. to 4:00 p.m. in the winter. It will likely depend upon utilization during the season.

**Question:** Will the outdoor classroom be closed to the public?

**Answer:** This will be addressed on Monday at Riverfront Park Committee.

D. [River Loop Update](#) – Rick Romero

Rick updated the board on the status of the Spokane River Loop project which now has an official name, logo and tagline: *Spokane River Loop – Where the River Connects Us*.

Spokane has a world class set of natural assets, built out amenities, and public spaces in its urban core. By bringing these assets together under one brand and partnership, we can better maximize our economic, environmental, and community outcomes for the Spokane region.

The loop runs from the Don Kardong bridge to the Sandifer bridge on both sides of the river, in a figure 8 shape intersecting in Riverfront Park, and encompassing three significantly different sections of the river: the gorge, the falls, and upriver. It can be thought of as the hub that connects several other trails around the city: Ben Burr Trail, Fish Lake Trail, South Gorge Trail, and Centennial Trail.

Rick outlined the goals of the project:

1) Brand and market under one unified identity

The loop (figure 8 / infinity symbol) and three river segments depicted in the logo were well received by stakeholders.

2) Activate the Urban River Corridor with additional amenities

Ideas include a zipline (in progress), upriver public dock at Ruby Hotel (in progress), kayak and paddleboard activation, Iron Bridge put-in (in progress), upriver taxi/cruise, loop tours with Mica Moon, Gonzaga campus south entry, Bosch Gorge gateway, and river rafting.

3) Address mobility to connect to and through the corridor

Research revealed that over 50% of the population can't or won't walk one mile. One suggestion of an innovative "people-mover" which may be addressed by Mica Moon and offer tours and move people from spot to spot. Jon Moog added that there are already several vehicles from Park Connect (Mica Moon) perhaps to serve this purpose. Since there was one shuttle for the zipline, it made sense to expand.

Public question: Are the vehicles limited to RFP or will they be allowed on Centennial Trail. Jon Moog answered “yes” they will be allowed on the trail. Shuttles are contained to RFP at this time, connecting people to various parts of the park, but will expand once the zipline is operational.

4) Increase emphasis on safety throughout the corridor

This goal could be a direct result of new river and park activations bringing added eyes and ears to the park. Also suggested were coordination of Park Rangers and other commissioned officers, and increased activities and events.

5) Continue to be good environmental stewards and tell our environmental story as part of park tours. 1) continue to build on the legacy of Expo; 2) develop an integrated clean water plan; 3) install park lighting, amenities, and electric vehicles.

In addition to Parks, some possible partners could include: Public Facilities District, Avista, Gonzaga, Centennial Trail, River Forum, Downtown Spokane Partnership, Visit Spokane, and Innovia. Several board members would like to see cultural/tribal partnerships as well.

Next steps: 1) Secure support from Park Board and Parks executive team; 2) secure support from Innovia community foundation board; 3) meet with state parks; 4) agree on appropriate partnership structure and board; 5) hand off project to new structure and board.

Doug Kelley noticed the city not on the list of partners. Rick said this presentation is his opinion of who has contributed and put money and time into the project. His opinion is to keep government out of the structure, because whoever has dollars also has power to rule and puts the project under constraints of rules of public funds.

Mayor Brown expressed disappointment in leaving the city out of the project. She said she, council, public works, and police chief have not been briefed. The mayor also feels that to have a project named Spokane River Loop without the city of Spokane apprised is nonsensical.

Rick replied to questions by saying this is a vision. He hopes this is something someone will take on and continue.

Doug Kelley is in support of the project and feels it would serve the community. He also feels that the project is too big for volunteers to take on and would need funding for an organization to take the lead.

Sally Lodato supports the project as well. She believes stakeholders need to be identified and she feels that the city needs to be involved.

Greta Gilman is also behind the project in terms of the river activation being part of the Parks' master plan.

Lindsey Shaw feels that the river is not safe for humans and it might not be in our interest to encourage people to be in it.

Lee Williams appreciated that accessibility was addressed.

Bob Anderson is in support of the project. He added that during master plan outreach, we found that people want more access to the river.

Garrett reiterated that the main goal is to connect people, stakeholders, and community with one another. Funding is to be determined if the project moves forward.

3. **Adjourn / lunch:** The meeting was adjourned for lunch at 12:19 p.m.  
*Paul Dillon leaves – 12:45*

4. **Call to order:** The meeting was called to order at 1:01 p.m.

E. [Friends of Riverfront Update](#) – Jon Moog

Jonathan shared a presentation on the Friends of Riverfront Park.

The Friends of RFP have reconvened after a three-year hiatus and the MOU renewal is in progress. They have established a board of directors and they are focused on membership building and philanthropy, and have a strong interest in fundraising for a major park investment: a clock tower interpretive center.

The vision of the project is to build an interpretive center on the site of the old depot to tell the story of the first 100 years in Spokane from early railroads through Expo '74. The project would focus on telling the stories of Expo and the Spokane Railroad history, with emphasis on 1) routes and commerce; 2) immigrants; 3) street trolleys; 4) the Great Northern RR and Union Pacific depots; and 5) viaducts and trestles. Also part of the storytelling would be the "Save Our Stations" campaign, hosting Expo '74 and its impact on the region, and Riverfront Park.

Visionary elements of the clocktower project are 1) making the clearstory of the clocktower accessible to the public; 2) highly detailed and themed exhibits; 3) incorporating Jerry Quinn's Railroad Depot; 4) serving as a starting point for remote displays in the park; 5) King Cole statue as an outside center welcoming guest; 6) inclusion of technology to tell story through compelling audio and visuals.

The Friends of RFP are considering this being a docent operated facility with separate entrance fees for the center and the clock tower climb. There may be school tours and private event rentals as well. Funding would be led by Friends of RFP. There are also opportunities for philanthropic naming of components of the project, such as the center, exhibits, rooms, etc. The Friends would also look at grant funding, fundraising, or a loan to be paid back by entrance fees.

To start, a vision validation study would be done in order to identify milestones, costs, concept, and conceptual renderings. Concept and gift agreement would be considered by Park Board.

F. [Sponsorships and Naming Rights](#) – Fianna Dickson and Amy Lindsey

Fianna and Amy shared an update on sponsorships and naming rights.

Background of the current policy, revised in 2023, applies to naming parks, facilities, and features, not events or programs. The policy outlines the criteria and process, and requires Park Board approval when assets have a value above \$20,000 or five years. The 2022 list of approved categories for potential naming sponsorships was handed out ([attached](#)).

One step toward expanding our naming rights and sponsorship was the passing of the Together Spokane initiative, which provides new opportunities with new co-owned facilities. A draft RFP for a consultant was completed in February after meeting with Spokane Public

Schools. The procurement timeframe will be about two months, after which multiple contracts may be awarded.

The three service components of the RFP scope are as follows:

- 1) Policy advisory services
  - a. Review and analyze existing parks and SPS policies – sponsorships, advertising, partnerships, and naming rights.
  - b. Policy recommendations – ensuring compliance, equity, transparency and alignment with community values, revenue share and activation responsibilities.
  - c. Timeline – assessment, draft recommendations, stakeholder review and final report delivery
- 2) Asset identification, inventory, and valuation
  - a. Asset identification – comprehensive inventory of sponsorship, partnership, and naming rights assets across Together Spokane shared-use facilities
  - b. Valuation – market-based valuations considering visibility, frequency of use, audience demographics, attendance, and comparable market data.
- 3) Sponsorship sales
  - a. Sales and methodology – prospect engagement, proposal development, negotiation, partnership structuring, execution, and reporting
  - b. Prospect identification and outreach – prospect research, outreach campaigns, proposal submission, and negotiations.

Some opportunities which were presented are consideration of additions or deletions to the Park Board approved asset list, possible Together Spokane joint projects, and Looff Carrousel possibilities.

The board is interested in revisiting the Sponsorships/Naming Rights policy.

#### G. Closing thoughts – Bob Anderson

Bob informed the board that Mayor Brown is going to interview the four recommended candidates for Park Board, possibly along with a few others. She is interviewing this week and next week.

Bob said that he considers both internal and external partnerships vital to Parks' success. These could be in the form of joint use agreements or simply acknowledgements. Last year at this time Parks was working on Together Spokane in partnership with SPS. This initiative will provide benefits to the community for years to come.

Bob added that if community members reach out wanting to know how they can be involved, contact Garrett and help arrange a meeting with the citizen. He also mentioned suggesting the citizen attend a DVC meeting.

A Fall retreat will be held later in the year.

5. **Adjournment:** The meeting was adjourned at 2:15 p.m.

*Garrett Jones*

Minutes approved by: \_\_\_\_\_  
Garrett Jones, Park Board Secretary

# Washington State Public Records Act (PRA)

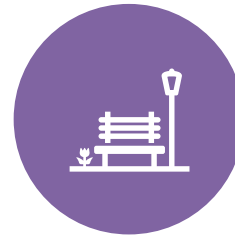
# What Is the Public Records Act?



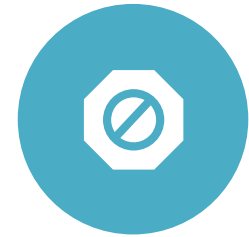
1972 WASHINGTON LAW  
PASSED AS A BALLOT  
INITIATIVE BY VOTERS TO  
PROMOTES TRANSPARENCY IN  
GOVERNMENT.



GIVES THE PUBLIC THE RIGHT  
TO REQUEST ACCESS TO  
PUBLIC RECORDS.



APPLIES TO ALL CITY OF  
SPOKANE DEPARTMENTS,  
INCLUDING PARKS &  
RECREATION.



REQUESTS CAN COME FROM  
ANYONE AND DO NOT  
REQUIRE A REASON.

# What is a public record?

A public record is defined in RCW 42.56.010(3) as any writing that is prepared, owned, used, or retained by any state or local government agency, and which contains information that relates to the conduct of government, or the performance of any governmental or proprietary function.

# What Counts as a Public Record?

---

Nearly all communications related to City business are public records.

Includes emails, Teams messages, texts, voicemails, and shared documents.

Applies regardless of whether you use a City-issued or personal device.

Drafts, notes, and informal messages can also be disclosable.

# PRA and Parks & Recreation



- Communications about park operations, programs, events, and facilities.
- Discussions with vendors, volunteers, and community groups.
- Internal conversations about scheduling, maintenance, or staffing.
- Messages about permits, complaints, or public feedback.
- Spreadsheets, invoices, receipts, and PowerPoint PB financials.
- Lists of registrants and personal data relating to P & R programs

# Be Careful What You Put in Writing

## Assume

Assume everything you write could be released to the public.

## Avoid

Avoid jokes, sarcasm, or casual comments about the public or coworkers.

## Do not use

Do not use email or Teams for personal or sensitive conversations.

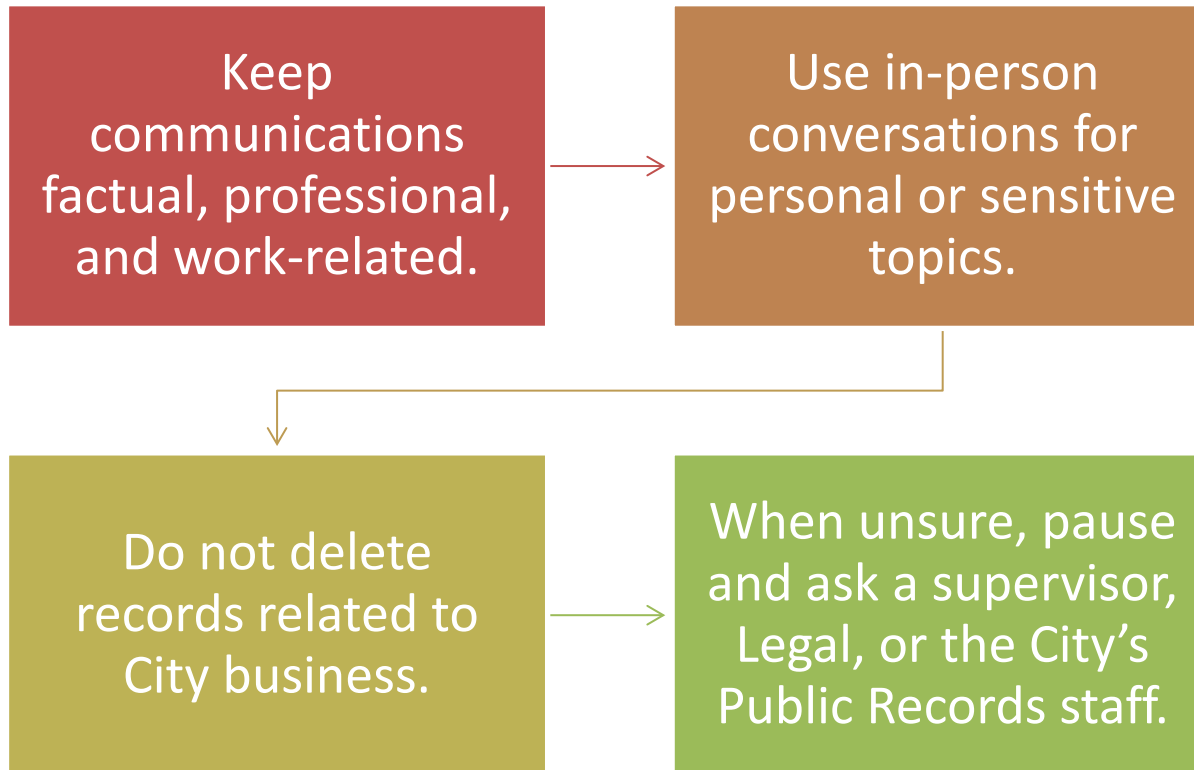
## Don't write

If you wouldn't want it on the front page, don't write it.

## Topic Change

Start a new email thread when you change subject matter- even if the communication is with the same group of people.

# Best Practices for Employees



# Key Takeaways



Nearly all City communications are public records.



Emails, Teams, and texts can be requested and disclosed.



Personal conversations should happen in person, not electronically.



Good habits protect you, the department, and the City.

# Questions?



© james richman



# Together Spokane Update

## 2026 Park Board Retreat

Travis Schulhauser and Nick Hamad

# Introductions

Travis Schulhauser

Chief Operating Officer

Spokane public Schools

Nick Hamad

Planning & Development Manager

Spokane City Parks & Recreation



# Agenda

## *Agenda*

- *Partnership Impact*
- *Levy & Bond Reminder*
- *Immediate Impact of Park Levy*
- *2026 Project List & Locations*
- *Partnership Updates*
  - *Projects*
  - *Shared Operations*
- *Communication Approach & Tools*
- *Q&A*

# Partnership Impact

- Citywide facility planning - reducing duplication of service.
- Cooperative property utilization (Madison/Franklin/Merkel)
- Leveraging expertise for ongoing projects
  - Parks / fields
  - Schools / structures
- First 'Joint Project' (Field Improvements) Realized in 2026
  - Required approval of both measures
- Maintenance Efficiency



# Partnership Impact

- Citywide facility planning - reducing duplication of service.

This Partnership is just beginning...  
...with much more partnering to come.

- - Required approval of both measures
- Maintenance Efficiency



# Spokane Parks & Recreation - reminder

- 50% more maintenance staff for caretaking and repair
- 3 major park renovations
  - (Minnehaha, Harmon, Grant)
- 3 new neighborhood parks
  - (N. Indian Trail/Meadowglen, Shiloh Hills, Latah/Hangman)
- 5 trail/trailhead improvements
- 6 Outdoor Learning Centers
- Upgrades like lighting, picnic spaces, parking lots, pathways across all 100+ parks
- 14 sport court renovations, 1 new disc golf, 1 new BMX pump track
- 12 water efficiency upgrades
- Natural land management and wildfire mitigation



# 55 SPS Sites - Annual Capital - reminder

- Focused on Critical Infrastructure for Longevity
  - Boilers
  - HVAC Controls
  - Interior and Exterior Painting
  - Play Structures
  - Intercoms
  - Concrete and Asphalt
  - Field Updates
  - Gym Floor Refinishing
  - Roofing



# 2026 Projects – Parks Goals

1. Widespread minor repair & improvement
2. Prioritize highest rated community desires
  - Playgrounds – Restrooms – Sport Courts
3. Significant investment in each council district
4. Leverage existing grants & partnerships
5. Begin construction on the 1<sup>st</sup> ‘major project’

*Establish the  
‘new normal’*

*Minor Repairs*

–

*Design*

–

*Construction*

# 2026 Work Progress & Next Steps

- **December 2025**

- Park Board Adopted 2026 Project List

- **January 2026 - April 2026:**

- Bid & contract 'shovel ready' work (10 projects)
- Hire A&E, begin design for approved projects
- Began hiring recruitment

- **May 2026**

- First Levy funding arrives, begin implementation

- **Fall 2026**

- 2027 Projects adopted by Park Board



# Immediate Impacts

- **2 new large area mowers in-hand**
  - Dwight Merkel & North Spokane
- **2 roof replacements complete**
  - Manito Japanese Garden RR & Liberty Park Gazebo
- **16 play component replacements**
  - 16 components in 15 parks
- **56 playground chip topoffs**
  - 10 complete
- **Aquatic Mechanical System Repairs**
  - Backwash systems, expansion tanks
  - Major Boiler repair & replacement
- **Little to no budgetary impact on recreation & operations**

\$585k of \$622k 2026 in  
minor repairs underway





# Phase 1 Projects Starting in 2026

# 2026 Citywide Park Improvements

- **Widespread Repair & Improvement**

- Playgrounds
- Aquatic Centers
- Roofs
- Rock Walls / mowing

- **Investment in High Community Priority Items (widely distributed)**

- 2-3 Sport Courts
- 2 Playground Replacements
- Restroom maintenance enhancements
- New standard restroom designs
- 3 trailhead / parking upgrades
- 1 new disc golf course
- 1 new park pathway

- **4 Playground & Restroom replacement projects (plan & design)**

- **1 park irrigation replacement**
- **1 new park (*more momentarily*)**



## Park Levy Projects





# SPS Bond Projects

**Adams Elementary Rebuild**

**North Central High School  
Modernization**

**New SPS Trades High School**



## Joint Parks & SPS Projects

**New All-Weather Field  
with Lights:**

Shadle Park High School  
TBD: Up to two other fields

**Annual Minor Park and School  
Improvements**

**Major Sports Complex  
Expansion:**

Dwight Merkel Sports Complex Expansion

**Madison School and Recreation  
Center at Franklin Park**

**Safety Enhancements & Added  
Rangers**

All 100+ Parks

Learn more at [TogetherSpokane.org](http://TogetherSpokane.org)

Information current as of March, 2026



# Meadowglen: New Neighborhood Park

- **What:** Utilize 30 acres of Parks-owned land to create a new neighborhood park, designed with neighborhood input
- **Why:**
  - North Indian Trail does not have access to a park within a 10-minute walk (national benchmark for park access)
  - 630+ homes with walkable access to a park
  - \$3.1M reimbursable grants / funding



# Meadowglen: Project Status

- Design & Bidding Complete for new 14-acre park
- Construction Contracting next week
- Pre-Construction Tree Work next week
- July Construction Start
- Late Spring / Summer 2027 Opening
- First New City Park Development Since 2003

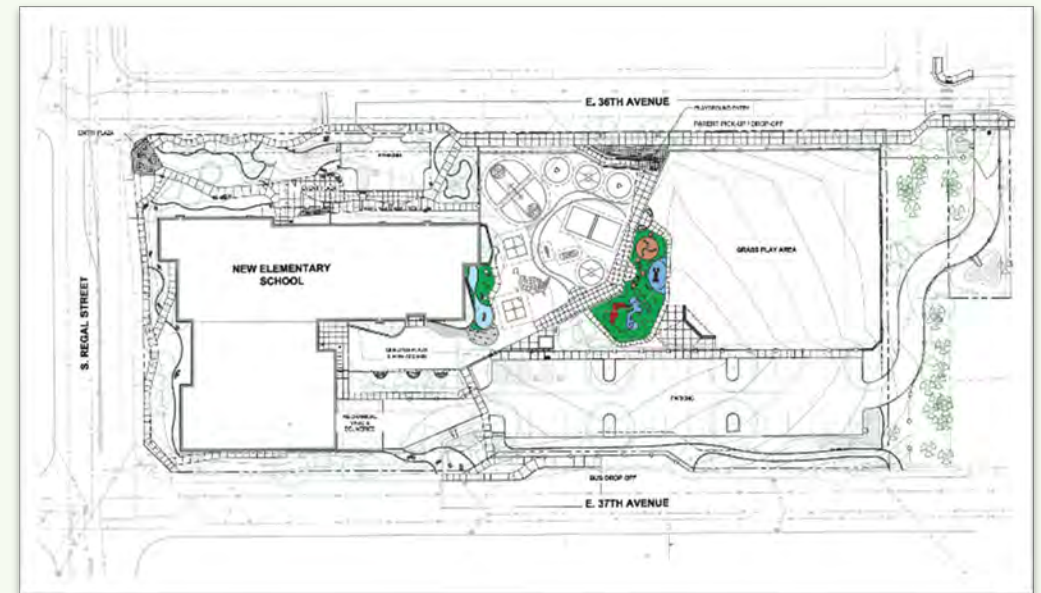


# Adams Elementary with Boys & Girls Club

**What:** Replace aging Adams Elementary School with a new integrated school and Boys & Girls Club design.

**Why:**

- Improves school building efficiency and safety to be compatible with 21st century learning
- Creates equitable access for students, staff, and visitors through ADA compliance
- Provides a youth center programming in location of city with limited access and growing population of need



# Adams Elementary Project Status



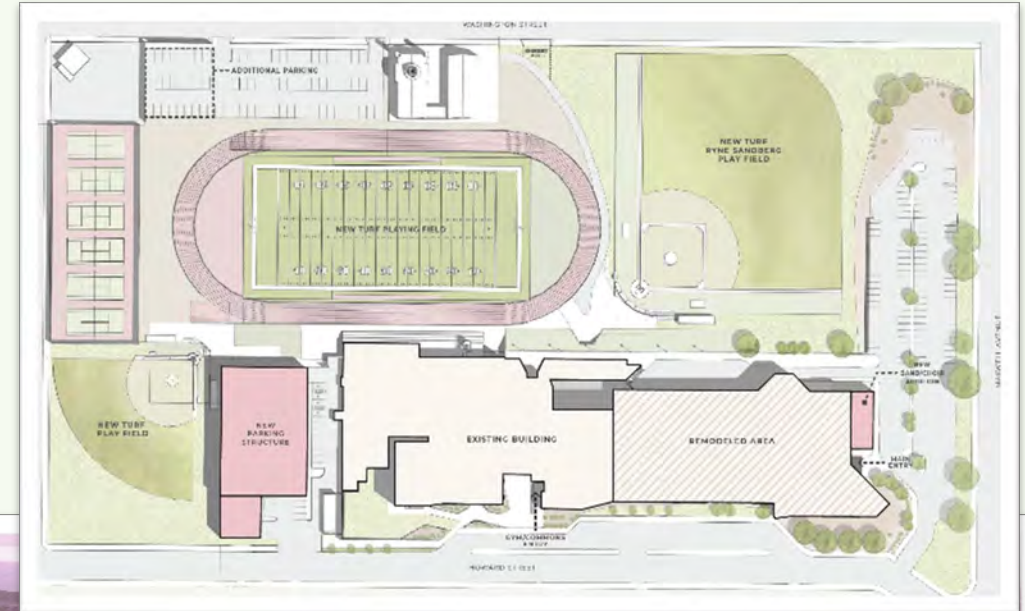
- The design has been completed by NAC Architecture of Spokane and Garco Construction of Spokane is the builder.
- An open house was held in early Dec. for members of the community to visit the current school before students moved to Camp Adams after Winter Break.
- Demolition of the current building began in mid-February, and construction of the new school began in Spring of 2026.
- The project is expected to be complete in Summer of 2027, with students and staff moving in to begin the 2027-28 school year.

# North Central High School Modernization

**What:** Modernization of school's oldest portions, including sports field improvements for school and community use as well as parking expansion.

**Why:**

- Improves school building efficiency and safety to be compatible with 21st century learning
- Last remaining SPS high school to be fully modernized



# North Central Status

- NAC has been selected for A&E services
- Bouten has been selected for GCCM services
- Partnering with NC leadership and staff on defining pain points that professionals will focus on solving



# All Park Restrooms & Playgrounds Upgraded or Replaced

- **What:**
  - Enhance Park Restrooms & Playgrounds Citywide
- **Why:**
  - Top requested park upgrades in Master Plan
  - Significant need for improvement citywide
  - 85+/- restrooms
  - 45+/- playgrounds



# All Park Restrooms & Playgrounds Upgraded or Replaced: Status

## Initial Immediate Repairs

- 16 broken components being replaced in 15 parks
- 56 playgrounds being filled / topped off with new EWF



# All Park Restrooms & Playgrounds Upgraded or Replaced: Status

## Larger Replacements

- 3 significant park investments
  - Coeur d'Alene
  - Harmon
  - Lincoln
- Consultants retained & working for
- Ongoing engagement with communities
  - Includes SPS
- Design & permit complete by fall
- Construction spring 2027



April 27, 2026 / SHARPLEY HARMON PARK RENOVATION

### Take Our Harmon Park Renovation Survey!

Tell us what improvements you want to see in your park!

[Learn more >](#)



April 27, 2026 / COEUR D' ALENE PARK

### Help Shape the Future of Coeur d'Alene Park!

Take our quick 3-5 minute survey to share what you'd like to see in the park.

[Learn more >](#)

# School & Recreation Center at Madison Elementary & Franklin Park



**What:** Joint development of a public recreation center co-located with new Madison Elementary School and Boys & Girls Club on portion of Franklin Park land.

## **Why:**

- Replaces an aging school building that has outgrown its capacity and is not compatible with 21st century learning
- Provides a publicly accessible, multi-use recreational facility to meet community needs during and after school hours
- Improves Franklin Park ball fields by adding practice lights

# Madison / Franklin Park: Project Status

- Winter: Explored potential sports complex enhancement with Madison Project.
- May: Progressive Design Build (PDB) submittal
- June: PDB Alternative Delivery Method Approved by WA State
- Sept: Design-Build Team recommended.
- Winter '26-'27: Property Agreements & detailed design
- Summer '27: Construction begins



# Madison / Franklin: Property Status

- Proposed Shift of School closer to Division
- Displaces existing parking & trees
- Requires land use agreement



# Madison/Franklin: Benefits

- **Benefits for Schools**

- Students stay in their school during construction
- Improved vehicular circulation
- More land available for recreation center
- More playground / grounds space

- **Benefits for Parks**

- Parking access off Division
- Increase park & playfield space near neighborhood
- Indoor Community Recreation Center
- Activation (Boys & Girls Club)
- Setup for potential ballfield improvements



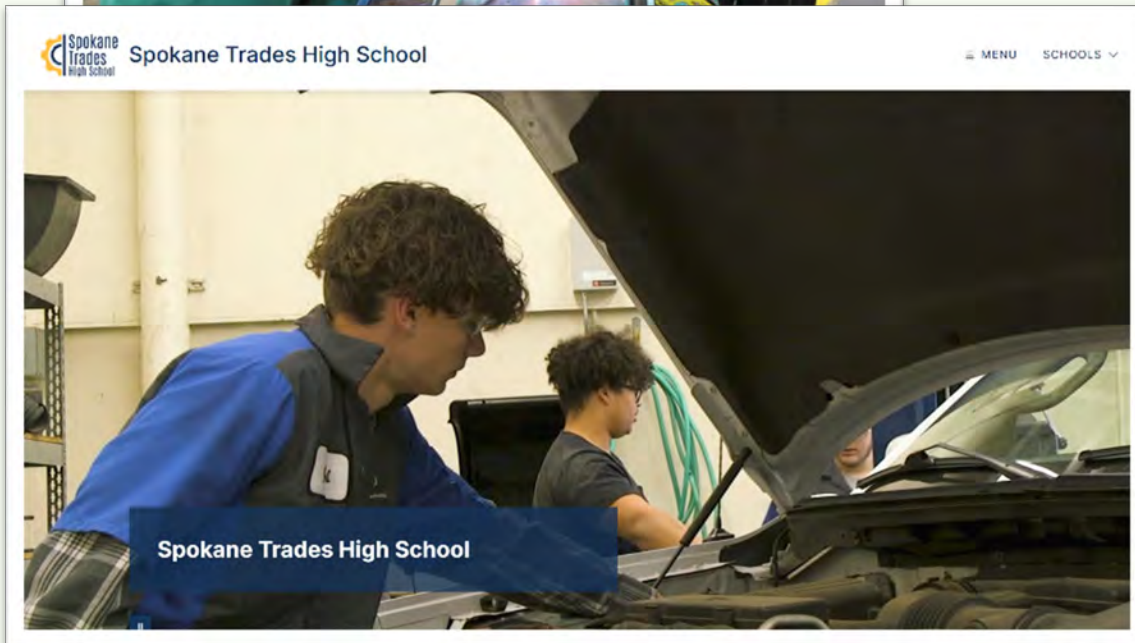
# New SPS Trades High School



**What:** New SPS high school on Spokane Community College campus in Chief Garry Park neighborhood to provide full day programming to 9-12 grade students who want an experience focused on Career and Technical Education (CTE).

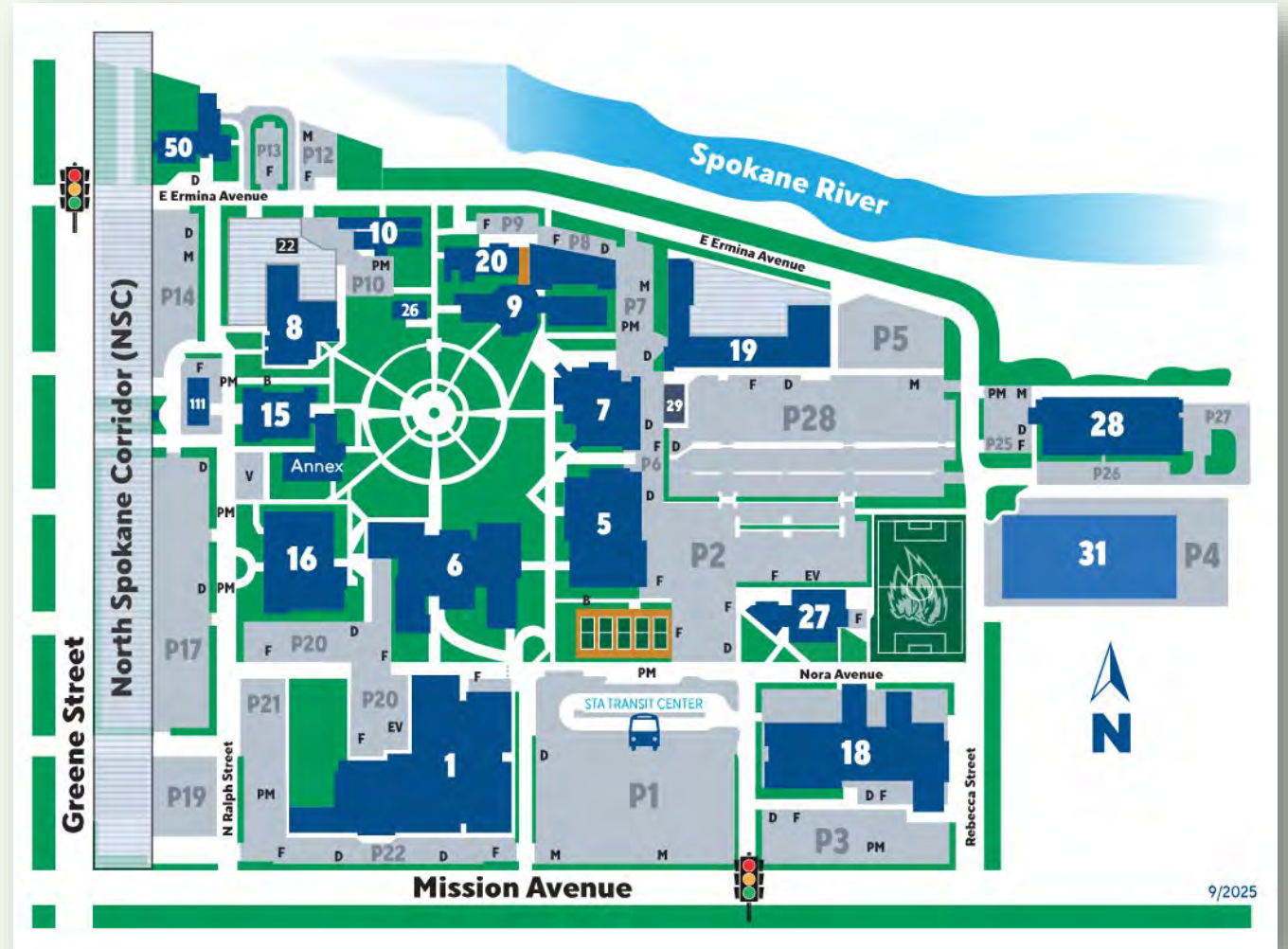
## **Why:**

- Addresses local workforce demands for careers in the trades
- Aligns with student interest for a full day high school program focused on CTE preparation
- Provides program to enhance integration of career connect learning with local business and industry
- Participating students graduate with a high school diploma and 2-year technical degree



# Trades High School Project Status

- Working with SCC on options on the SCC Campus
- CTE Department is meeting with industry partner advisors by pathway – Construction, Manufacturing and Health Sciences
- SPS and SCC Leadership discussing initial plans for shared resources – joint use of facilities, equipment and aligning architectural services



# Merkel Sports Complex Expansion



Spokane Public Schools



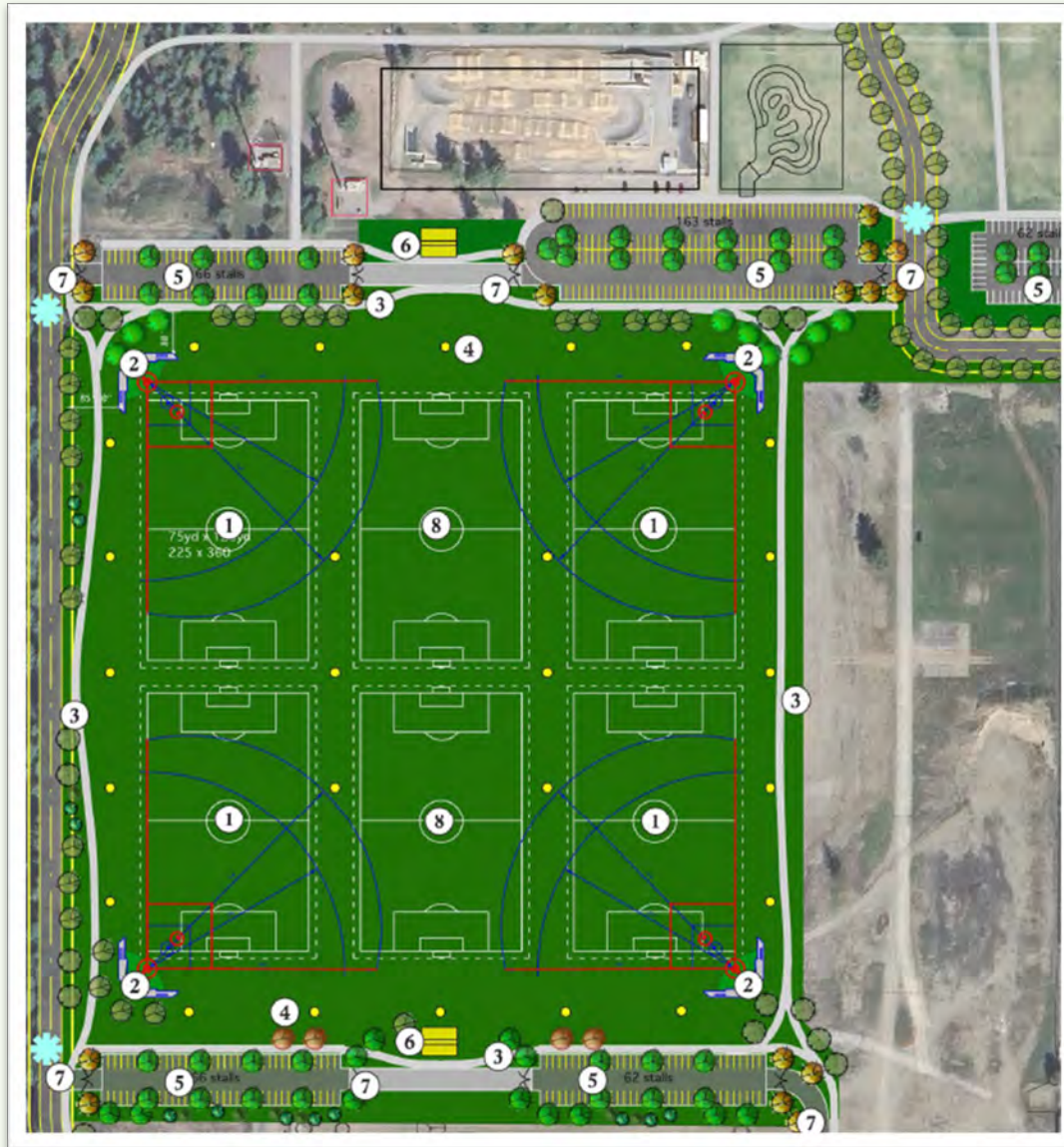
**What:** Add at least six lighted rectangle fields, parking, restrooms, storage, and concessions building

## Why:

- Expands evening and off-season use
- Doubles capacity of Merkel facility by using former Albi site
- Responds to increased need for recreation spaces for students and community
- Attract and host large regional tournaments that create economic vitality



# Merkel Sports Complex: Project Status



- January: Concept refined to six fields with lighting
- February: PDB Alternative Delivery Method Approved by WA State
- March: Design-Build Teams shortlisted
- April: Design-Build Team recommended
- May: Detailed Design Work Began
- June/July: Stakeholder Input on layout
- Nov/Dec: Design Substantially Complete
- Spring 2027: Construction Begins
  
- Winter / Spring 2027: Maintenance or property agreement



# Regional All-Weather Fields with Lighting



## What:

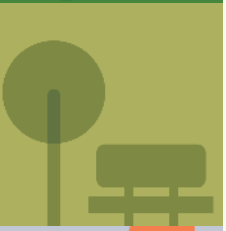
Provide at least one all-weather rectangular field and at least one turf infield with lighting within each neighborhood high school boundary.

## Why:

- Expands evening and off-season use
- Responds to increased need for recreational activity spaces
- Increased activation enhances safety
- Reduces maintenance and watering costs

# Regional All-Weather Fields: Project Status

- February: PDB Alternative Delivery Method Approved by WA State
- March: Developed performance requirements for lighting & artificial turf systems
- April: Design-Build Team recommended.
- Summer/Fall: Convert Shadle Football/Baseball & Rogers Baseball/Softball to artificial turf
- Fall: First all-weather surface field opens



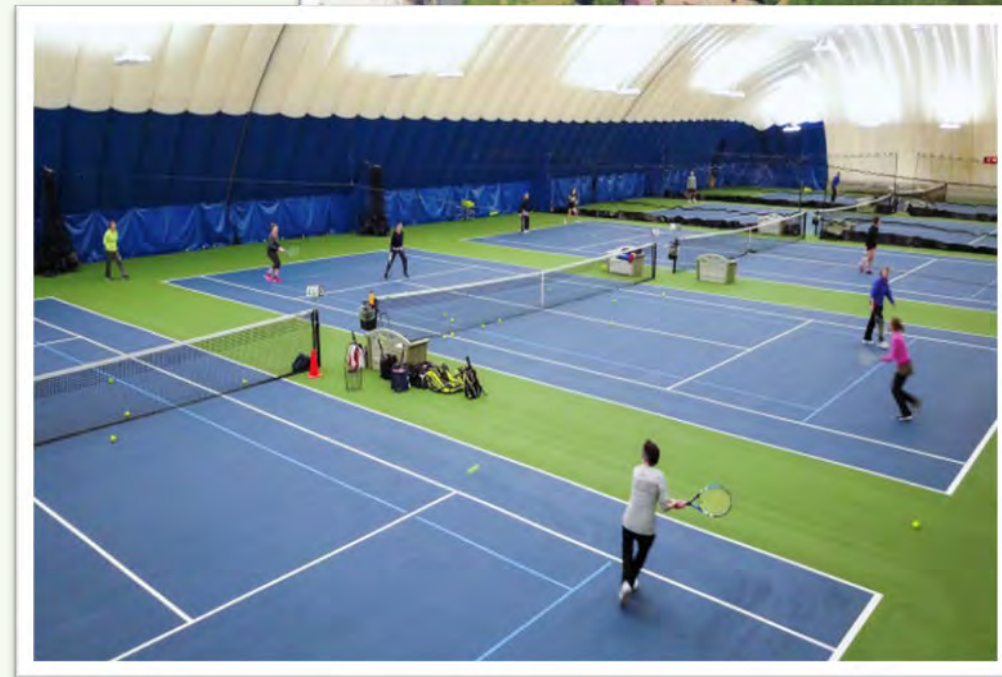
# Shadle Park Indoor Tennis Courts

## What:

Partner with the United States Tennis Association (USTA) to construct an indoor tennis facility at Shadle Park.

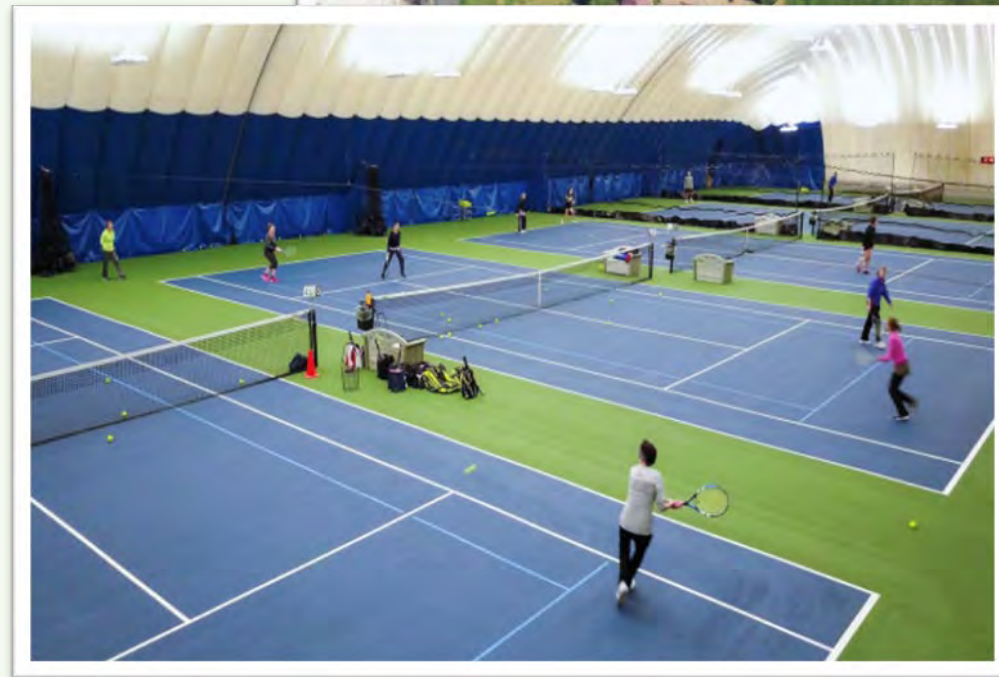
## How:

- Facility and construction costs funded by the USTA
- Utilizes existing tennis courts at Shadle Park High School
- Provides all weather and year-round access to tennis for students and community



# Shadle Park Indoor Tennis Courts: Status

- Spring '26: Meetings & Agreement discussion with USTA & Camas School District
- Remainder '26: Design & planning
- 2027: Implementation / Construction
- Fall 2027: Open for use



# Finalizing Phase 2 and Phase 3 projects

- Riverpoint Building
  - Community School and Administrative Building
- Garry MS Modernization
- Chase MS Updates
- Aquatic Center
  
- 2027 park projects

more to come...



# Shared Maintenance & Operations

## What:

Develop coordinated grounds programs to increase the quality of maintenance and operations for parks and school grounds

## How:

Create model that strategically assigns city and school district grounds staff to locations based on geography, maximizing time and fuel efficiency



# Operations Updates: Park Staff

- 3-4 year operational ramp-up
  - Rangers
  - Project Management
  - Operations
- Year 1 hires complete by May 2027
- Equipment Replacement & Repair
  - 2 Mowers already
- Minor Park Repair Fund
  - \$585k deployed already



# Operations Updates: Cooperative Grounds Maintenance

- Initial maintenance assessments ongoing
  - Location & area
  - Mobilization time
  - Duplication of service
  - Trade specialization
- Joint-Use @ 8 current sites
- Property True-ups @ 3-4 sites
- Future recreation scheduling discussion



# Enhancing Public Safety in Open Spaces

## What:

Initiate programming and partnerships to maximize activation of public spaces and increase law enforcement staffing levels

## How:

- Coordinate Limited Commission Park Ranger program for supervision of parks and school grounds by sharing resources
- Quadruple the size of the Park Ranger team to serve all neighborhoods
- More frequent park maintenance and care
- Facility upgrades for increased usability
- Programming/activations



# Enhancing Public Safety in Open Spaces: Status

- Completed reclassification to establish more competitive pay
- Accepting applications until May 11.
- Interviewing & onboarding through July/August

*NOW HIRING*  
*NOW HIRING*  
*NOW HIRING*



# Comms approach

## Goals

- Well-informed public
  - What projects are happening now/later?
  - How can I provide input?
  - ROI for their tax dollars
- Accuracy communicating a large-scale, mixed set of projects with varied timelines
- Internal audiences know where to find answers

## Strategies

- Leveraging all tools to reach audiences multiple ways
  - Tiered -- from major investments to smaller projects
- Quick responses to misinformation
- Themed storytelling

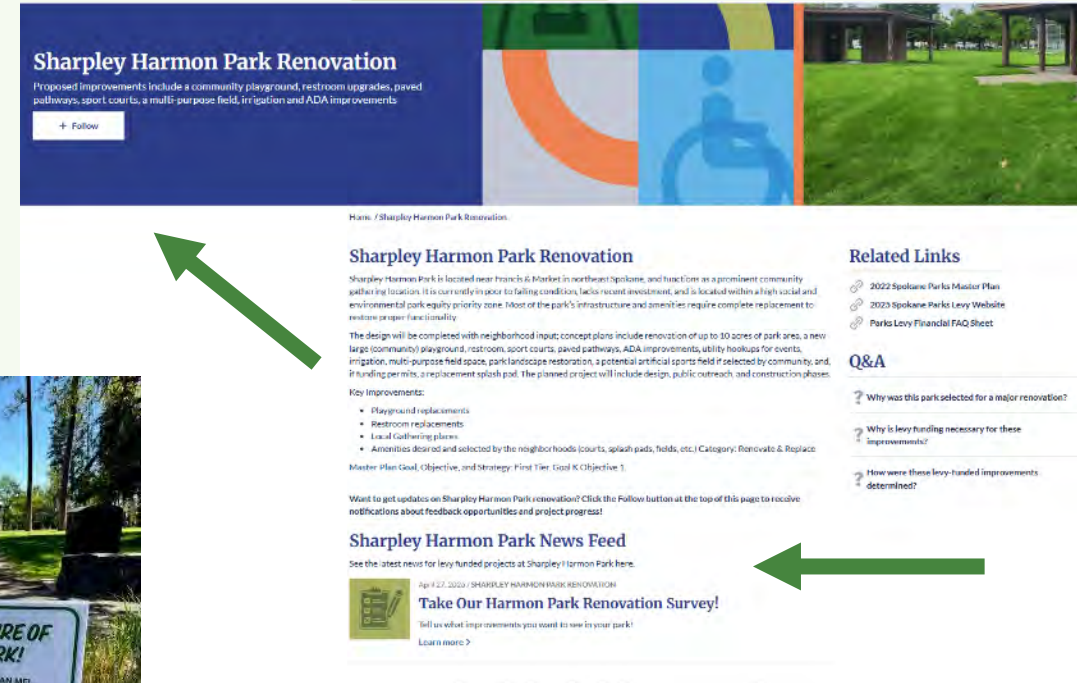
## Key timing opportunities

- Design phase
- Construction phase
- Openings



# Communications tools & tactics

- Websites @ TogetherSpokane.org and SpokaneParks.org/levy
- Earned media
- Social media
- Videos/drone work/photos
- Presentations & webinars
- One-sheets/flyers
- E-newsletters and targeted emails
- Activity Guide and School Talk
- Postcards
- Site signs & reader boards
- Booths at events or pop-ups



**COMING 2027: Meadowglen Park**

Meadowglen was designed through community feedback, and will include a playground, restroom, sport court, sand volleyball courts, picnic area, trail access, walking paths, and a bus stop. Approximately 14 acres will be developed into a park, and 16 acres will remain natural land.

Pre-construction, including fuels reduction and forest health work: spring 2026

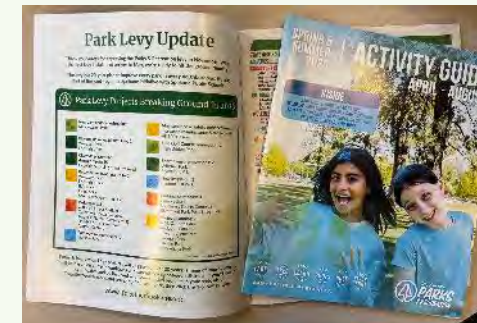
**Construction begins: summer 2026**  
**Construction ends: summer 2027**

[togetherspokane.org/meadowglen-park](https://togetherspokane.org/meadowglen-park)  
 Click "Follow" to receive project updates!

Your Park Levy dollars at work!  
 Additional funding provided by the Washington State Recreation & Conservation Office and Spokane Transit Authority

SCAN ME!

City of Spokane  
 parks@spokane.org  
 311 or (509) 785-2489  
 www.TogetherSpokane.org



**Spokane Public Schools, Parks and Rec give update on "Together Spokane" priority projects**

On Tuesday, officials from both groups announced the first round of priority projects.



City of Spokane  
 Parks & Recreation Marketing Coordinator Josh Morrissy · 5 days ago

As part of the voter-approved Park Levy, City of Spokane Parks & Recreation is planning updates to the playground in Lincoln Park. Please take our brief survey to choose your preferred playground style and play features. We encourage you to take this survey with your children or grandchildren!

<https://www.togetherspokane.org/lincoln-park/lincoln-park-playground-survey>

Lincoln Park Playground Survey | Lincoln Park  
 togetherspokane.org



# Together Spokane

Time for questions



*Where the River Connects Us.*

# The WHY

Spokane has a world-class set of Natural Assets, Built-out Amenities and Public Spaces in its Urban Core

- Largest Urban Waterfall in the World
- Nationally Ranked EXPO-Legacy Downtown Park
- Unmatched Entertainment, Sports and Tourist Facilities
- Nationally Recognized Universities on Both Sides of the River
- Incredible Urban River Trail System
- Kendall Yards Best in Class Downtown Community

# The WHY

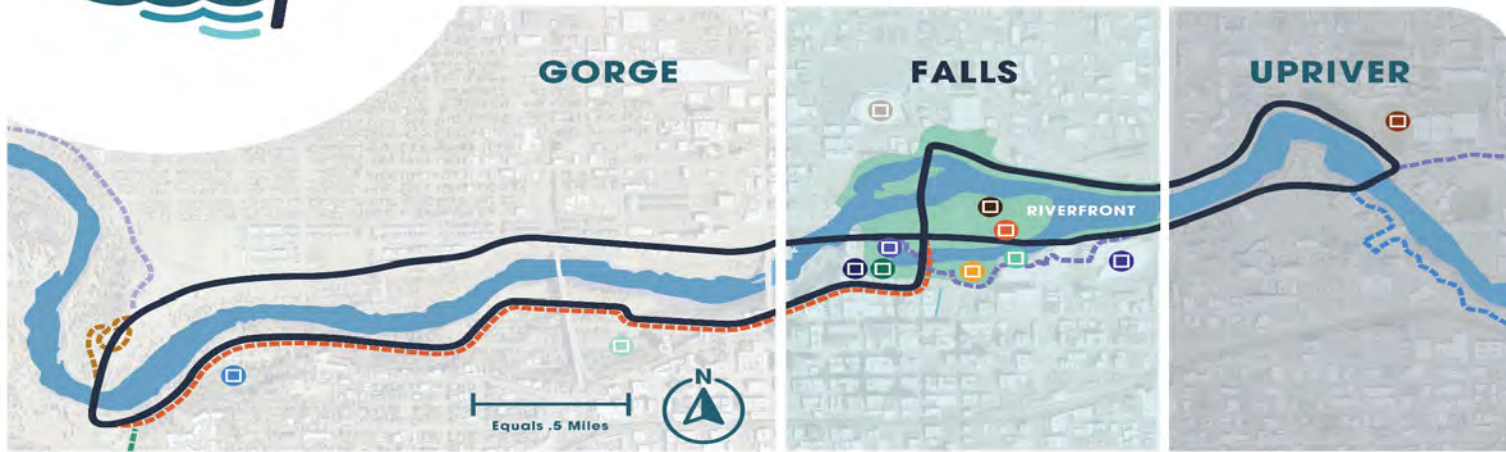
By bringing these assets Together under one Brand & Partnership, we can better maximize our Economic, Environmental and Community outcomes for the Spokane region

# The WHERE



## MAP

Lorem ipsum dolor sit amet, consectetur adipiscing elit, sed diam nonummy nibh euismod tincidunt ut laoreet dolore magna aliquam erat volutpat. Ut wisi enim ad minim veniam, quis nostrud exerci tation ullamcorper suscipit lobortis nisl ut aliquip ex ea commodo consequat. Duis autem vel eum iriure dolor in hendrerit in vulputate molestie



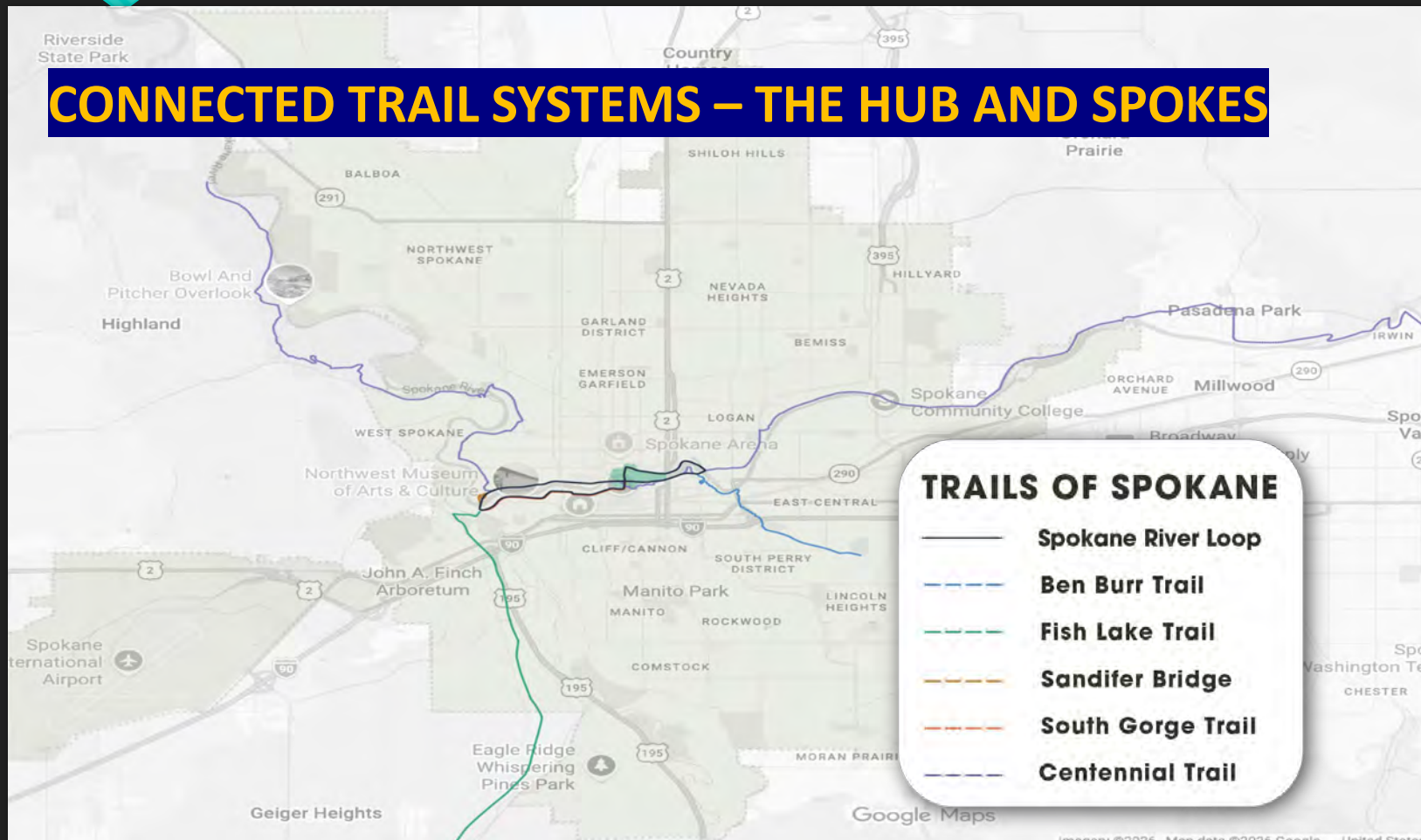
### KEY

	Spokane River Loop		Mobius Center		Clock Tower
	Ben Burr Trail		SkyRide		Loof Carrousel
	Fish Lake Trail		Zipline		First Interstate Theatre for the Arts
	Sandifer Bridge		Spokane Arena		Convention Center
	South Gorge Trail		Pavilion		Gonzaga University
	Centennial Trail		Peaceful Valley		
	NW MAC Museum				



# The WHERE

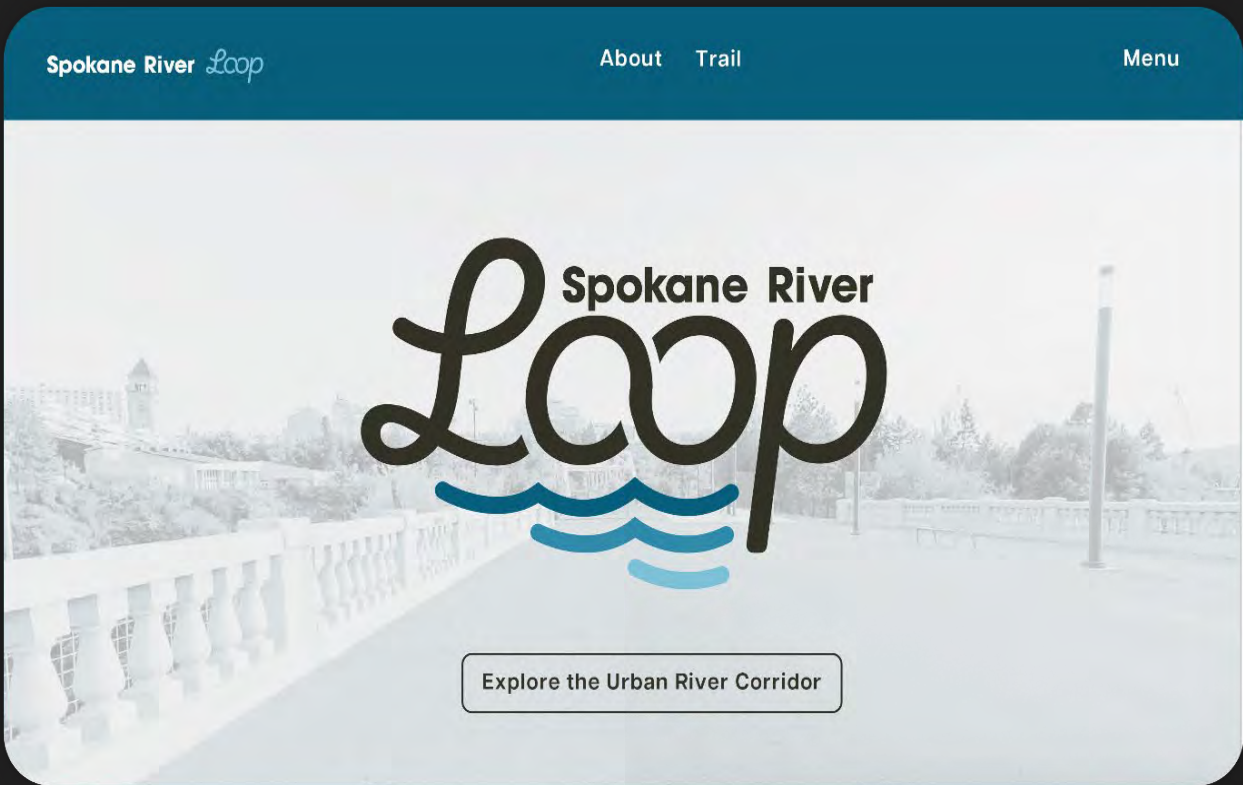
## CONNECTED TRAIL SYSTEMS – THE HUB AND SPOKES



# The WHAT Strategic Goals

- **GOAL 1** – Brand and Market Under One Unified Identity
- **GOAL 2** - Activate the Urban River Corridor with Additional Amenities
- **GOAL 3** - Address Mobility to Connect To and Thru this Corridor
- **GOAL 4** - Increase Emphasis on Safety throughout Corridor
- **GOAL 5** - Continue to be Good Environmental Stewards

# GOAL 1 Branding/Marketing



# GOAL 1 Branding/Marketing



# GOAL 2 Activating the River

- GOAL 2 - Activate the Urban River Corridor with Additional Amenities

- Zipline
- Greater River Access
  - Upriver Public Dock
  - Kayak & Paddleboard Activation
  - Iron Bridge Put-In
  - Upriver Cruise
  - Loop Tours
- Gonzaga Campus South Entry
- Bosch Gorge Gateway
- Family River Rafting Experience



# GOAL 3 Address Mobility

## ○ GOAL 3 - Address Mobility to Connect To and Thru this Corridor

- Over 50% of Population Can't/Won't Walk 1 Mile
- Innovative Use of Electric Vehicles Along the Corridor
- Innovative Use of Electric Vehicles to Connect N/S Thru the Park
- Key Partnership Initiative
  - Entertainment
  - Retail
  - Hospitality
  - Residential
  - Tourism



# GOAL 4 Safety

- GOAL 4 - Increase Emphasis on Safety Throughout Corridor
  - Use New Amenities and Mobility to Add Eyes and Ears
  - Park Rangers/Limited Commission Officers
  - Key Partnership Initiative:
    - Private Security
    - Partner Participation and Funding
    - CPTED
    - Increased Activities and Events

# GOAL 5 Good Stewards

- GOAL 5 - Continue to be Good Environmental Stewards of these Assets
  - Legacy of EXPO
  - Integrated Clean Water Plan
  - Park Lighting, Amenities and Electric Vehicles Powered by Park Dams
  - Tell our Environmental Story as Part of Park Tours

# The LOOP

- Originated Through EXPO+50 Innovia Community Foundation
- Continued Funding of Vision Thru Separate Innovia Fund Partners

# The LOOP

- Vision Has Always Assumed a Community Partnership
- Developed Through Community Foundation and Community Funding
- My Goal Was Always to Hand This Off to a Consortium of Partners

# Potential Loop Consortium Board

- Parks
- Public Facilities District
- Avista
- Gonzaga
- Centennial Trail
- River Forum
- DSP
- Visit Spokane
- Innovia Community Foundation



# Next Steps

- Secure Support from Park Board and Parks Executive Team
- Secure Support from Innovia Community Foundation Board
- Meet/Coordinate With State Parks
- Agree on Appropriate Partnership Structure and Board
- Hand Off Project to New Structure and Board

# THANK YOU!



FRIENDS



OF

riverfront

SPOKANE

# Update

- Reconvened after Feb 2026 after 3-year hiatus
- Board of Directors
  - Jennifer Ogden, Gerry Sperling, Cole Taylor, Bill Youngs, Kelly Brown, Chris Wright
- MOU expired – Renewal in process
- Increase focus on membership building & philanthropy
- Strong interest in fundraising for major park investment



# Clocktower Interpretive Center Concept

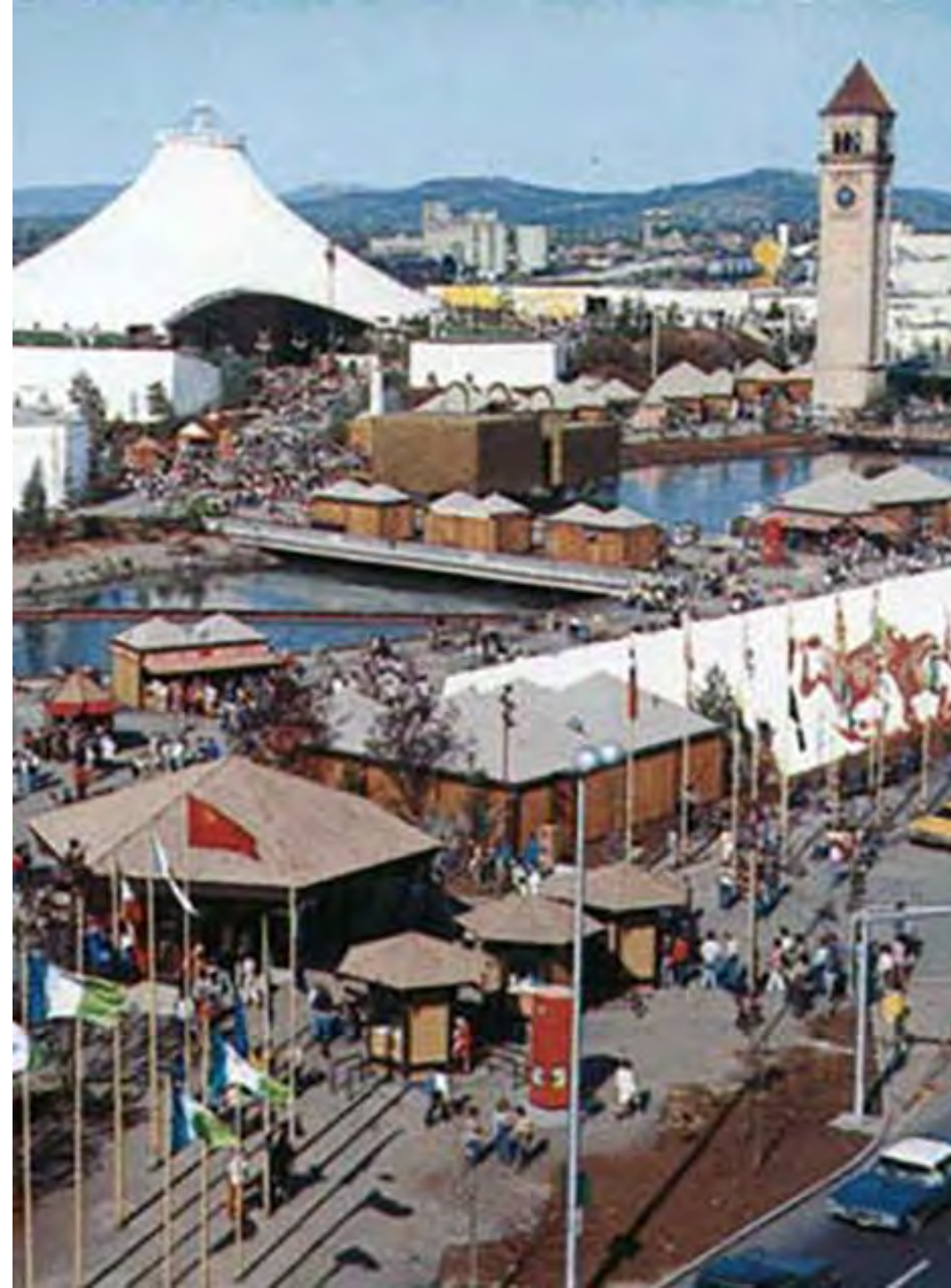
# Vision

Riverfront Park in Spokane, WA has a rich railroad history and is home to Expo'74. These stories bookend the first 100 years of Spokane with themes centered around the river, renewal and gathering.

All that remains of the railroads is an 1892 clocktower, a remnant of a now demolished depot; and a small collection non-identified Expo landmarks.

The vision of this project is to build a new interpretative center on the site of the old depot to tell the story of the first 100 years in Spokane from early railroads through Expo '74; a momentous event that continues to influence Spokane today. Storytelling would be provided through well-themed and custom exhibits and technology that transports visitors into the history. The interior of the clocktower will be re-built to give the general public access and scenic views of downtown and the river.

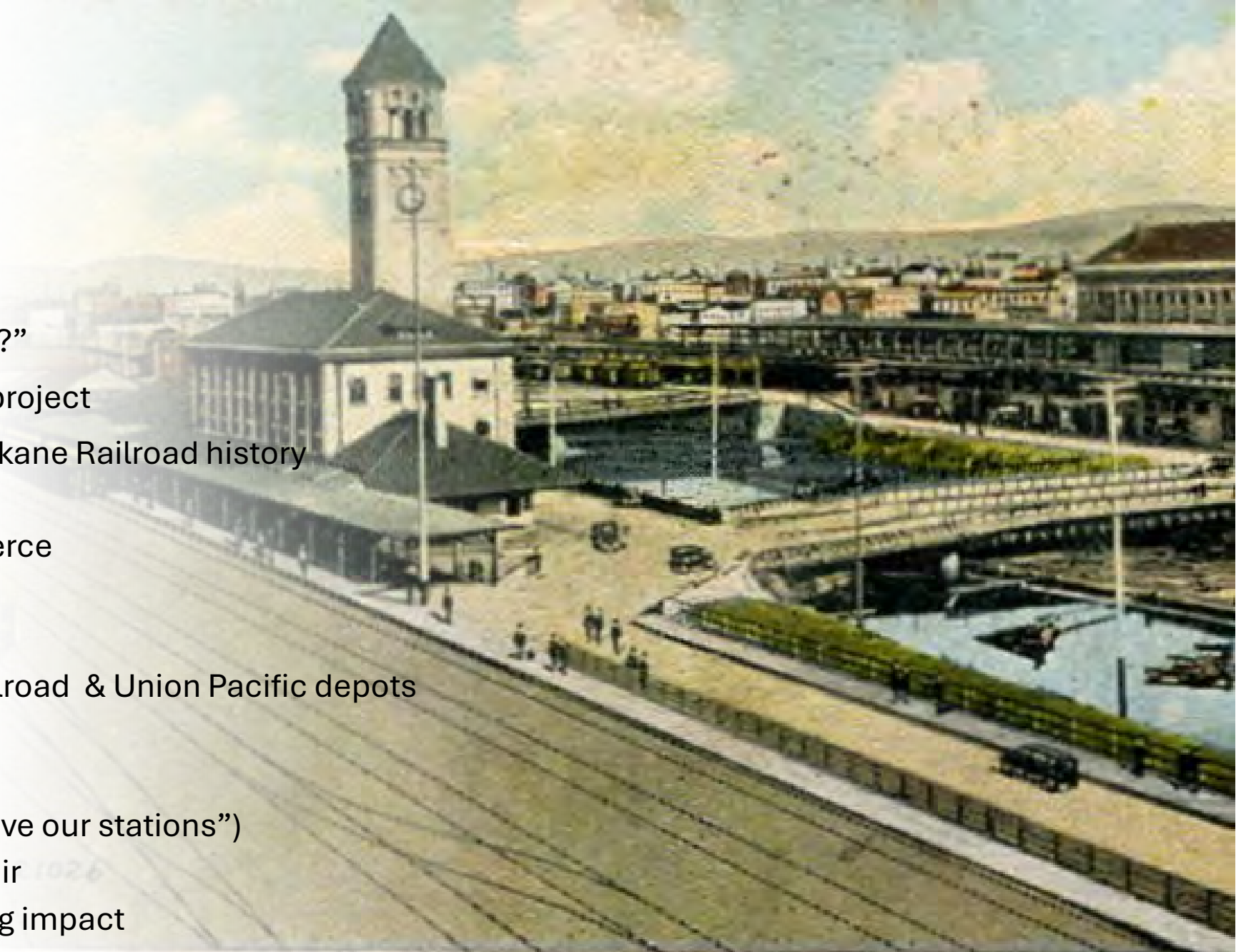
Center becomes a regional destination attraction for Spokane enhancing economic impact through tourism.



# Experience & Storytelling

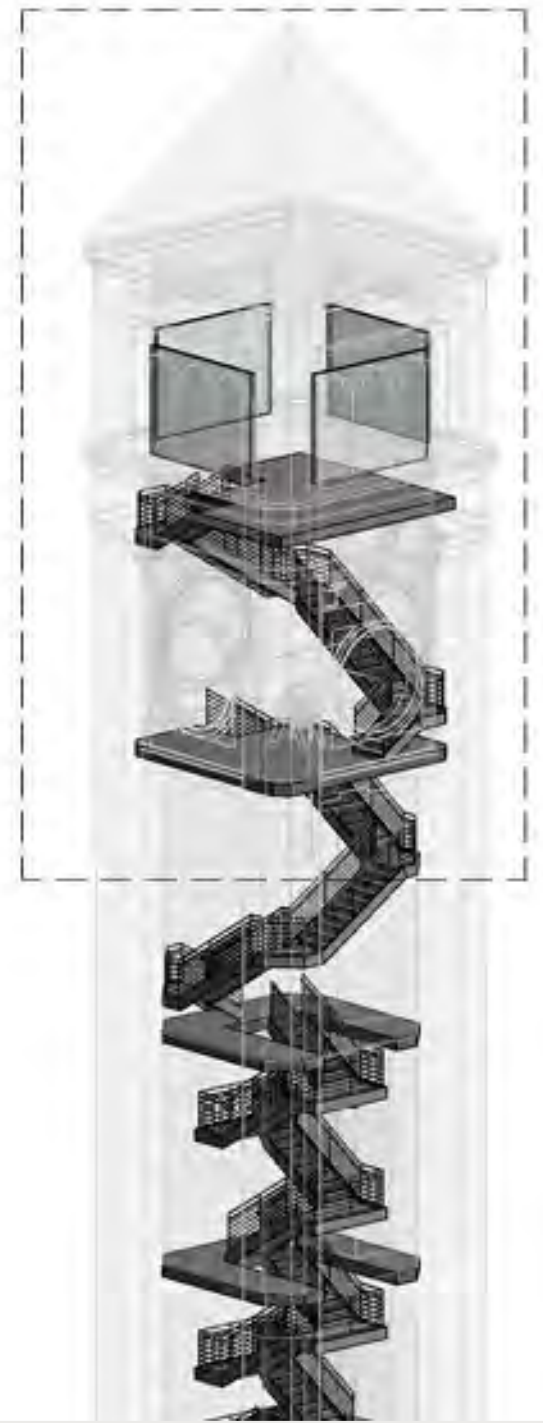
- “Can I climb the Clocktower?”
- King Cole Commemoration project
- Story telling of Expo and Spokane Railroad history
  - Early Railroad History
    - Routes and commerce
    - Immigrants
    - Street trolleys
    - Great Northern Railroad & Union Pacific depots
    - Viaducts/ trestles
  - Transformation for Expo
    - SOS campaign (“save our stations”)
  - EXPO ‘74 Hosting the Fair
    - Regional and lasting impact
  - Riverfront Park

Great Northern Depot, Spokane, Wash.



# Visionary Elements

- Clearstory of Clocktower is accessible to public
- Exhibit are highly detailed & themed to engage visitors
- Incorporate Jerry Quinn's Railroad Depot
- Center serves as starting point for remote displays in park... historical trail
- King Cole statue is outside center welcoming guest
- Inclusion of technology to tell story through compelling audio and visuals



# Operations & Funding Strategy



## Operations

- FORFP Docent managed
- Separate entrance fees for center and clocktower climb
- School tours
- Private event rentals

## Funding Strategy

- Led by FORFP
- Philanthropic naming
  - Center
  - Exhibits
  - Rooms
  - Outside courtyard
  - Clocktower levels
- Grant Funding
- Community Fundraising
- Loan paid back through fees



# Where do we start?

- Vision Validation Study
  - Identify milestones
  - Costs
  - General concept / Storytelling
  - Conceptual renderings
- Concept and Gift Agreement to be considered by Park Board



# Lewis and Clark Interpretive center



# Mount St. Helens Visitors Center





Donner Museum, Truckee, CA



Exhibit of St Louis 1904 worlds fair, Missouri History Museum

# 1934 world fair Chicago, Elmhurst History Museum





1982 Worlds fair Exhibit, East Tennessee Historical Society, Knoxville, TN

# Sponsorships & Naming Rights Update

Fianna Dickson & Amy Lindsey



# Background

- Current policy (revised 2023)
  - Applies to naming parks, facilities and features (i.e. Acme Park, Acme Field, Acme Shelter)
  - Does not relate to naming an event or program (i.e. Acme Skate Night)
  - Criteria and process are outlined
  - Park Board approval required when assets have a dollar value > \$20,000 or 5 years



# Current Approved List

handout

# RFP Sponsorship Consulting, Asset Valuation & Sales

- Draft RFP Complete
- SPS-Parks Together Spokane Assets
- Procurement Timeframe: Two-months
- Multiple Contracts Awarded: Seeking pricing structure, estimated hours and cost associated with each service component

# RFP Scope: Three Service Components

## 1. Policy Advisory Services

- Review & Analyze Existing Parks & SPS Policies: Sponsorships, Advertising, Partnerships and Naming Rights
- Policy Recommendations: Ensure compliance, equity, transparency and alignment with community values, revenue share and activation responsibilities
- Timeline: Assessment, Draft Recommendations, Stakeholder Review & Final Report Delivery

# RFP Service Component

## 2. Asset Identification, Inventory, and Valuation

- Asset Identification: Comprehensive inventory of sponsorship, partnership and naming rights assets across Together Spokane shared-use facilities
- Valuation: Market-based valuations considering visibility, frequency of use, audience demographics, attendance, and comparable market data

# RFP Service Component

## 3. Sponsorship Sales

- Sales Process & Methodology: Prospect engagement, proposal development, negotiation, partnership structuring, execution and reporting
- Prospect Identification & Outreach: Prospect research, outreach campaigns, proposal submission and negotiations

# Possible opportunities on the horizon

- Consideration of additions to Park Board-approved asset list
- Together Spokane joint projects
  - Merkel expansion, indoor pool, recreation center, outdoor learning centers, fields, etc.
- Loeff Carrousel possibilities



*Thank you!*



*City of Spokane*  
**PARKS  
& RECREATION**

**Potential Parks & Recreation Assets  
Available for Naming Sponsorship  
Approved by Park Board: April 2022**



## Places

### Sports fields or courts

- Soccer
- Football
- Softball/Baseball
- Tennis/Pickleball
- Futsal
- Basketball (those not sponsored by Hooptown USA)

### Facilities within parks

- Pools
- Splash pads
- Ponds
- Bridges
- Picnic shelters
- Benches/tables
- Drinking fountains
- Community gardens or flowerbeds
- Playgrounds
- Pathways
- Pavers
- Meadows
- Trails and trailheads

### Specialty parks

- Skate parks
- Dog parks
- Disc golf and youth disc golf courses

### Specific assets in parks

- Finch Arboretum conference rooms inside the Woodland Center
- Corbin Art Center classrooms or porch
- Shadle Park performance stage
- Redband Park river put-in
- Manito Park loop drive
- Merkel RV lot

- Merkel BMX track
- Merkel Synthetic Turf Fields
- Camp Sekani parking area

#### Park Operations

- Complex
- Conference rooms

#### Golf

- Courses (course would maintain the name, but add after name, "Presented by")
- Patios
- Pavers
- Sponsor items could include flags, sticks, tee markers, range balls/targets, score cards

#### Riverfront Park *\*Indicates Park Board has already approved naming (2019)*

- U.S. Pavilion\*
- U.S. Pavilion conference rooms\* (1 SkyRoom, 2 meeting rooms) (Family name only)
- U.S. Pavilion terraced seating\* (10) (Family name only)
- Numerica Skate Ribbon party room\* (Family name only)
- Loeff Carrousel animals\* (54) (adoption recognition only, not naming of animals)
- Loeff Carrousel party rooms\* (4) (Family name only) & patio
- Boardwalks at Red Wagon Meadow or Loeff Carrousel
- Clock tower stairwell & observation deck
- Dog park\*
- Plazas & overlooks
- Picnic shelters\* (North, Post St.)
- Meadows
- Bridges
- Butterfly\*
- Engraved pavers & fence tags\*
- Art markers

## Programs, Projects & Equipment

#### Recreation

- Scholarship program
- Category sponsor, like Outdoor, Wellness & Enrichment, etc.
- Program sponsor, like Mobile Rec, TRS Powderhounds, youth golf, open gym volleyball, etc.
- Leagues or tournaments, like e-sports or adult athletics
- Winter grooming
- Aquatics swimming lessons, lifeguard training, free swim days
- Aquatics events like family nights or Youth Fishing Frenzy
- Adaptive equipment

- Outdoor recreation equipment (SUPs) & trailers (SUP, wine tour, kayak)
- Aquatics pool covers and funbrellas
- Transportation van
- Cornhole targets
- Recreation Activity Guide or Summer Camps Guide printing & distribution

#### Riverfront Park

- Community Engagement programs, like Storytime at the Carrousel, free yoga & spin classes
- Community Engagement category, like Health & Wellness
- Light up the Night holiday tree walk & trail of lights
- Spring or Winter Market
- NYE and 4<sup>th</sup> of July Fireworks
- Ice Skating lessons, DJ nights, Cheap Skate nights, etc.
- Event venue grant program
- Community concerts

#### Maintenance

- Annual garden planting program
- Adopt-a-park program
- Water conservation “water wise” replacement project area
- Goat grazing project area
- SpoCanopy tree planting project
- Art maintenance project
- Interpretive sign project

## Other/Misc.

- Banners at Merkel & SE Sports Complex sports fields
- Volunteer appreciation program
- Employee uniforms