



**Special Meeting of the Land Committee of the
Spokane Park Board**

November 1, 2017, 3:00 p.m. – 5:00 p.m.

Park Operations Complex Lunchroom

2304 E Mallon Avenue

Spokane, Washington

Al Vorderbrueggen – Park Operations Director

Committee Members:

- X Gilman, Greta – Chairperson
- X Kelley, Ross
- X Lodato, Sally
- X Ogden, Jennifer
- Salvatori, Steve
- X Fagan, Mike – Council Liaison

Also present:

Park Board:

Parks Staff:

Fianna Dickson
Leroy Eadie
Garrett Jones
Carl Strong
Al Vorderbrueggen

Other City Staff:

Guest(s):

Jim Demand
Dave Lennstrom
Mark Peterson
Rob Sendak

Summary

- The Committee recommended Park Board approve the Cowley Park “Christmas Park” proclamation, with minor edits.
- The Committee recommended Park Board approve contracting with R&R Woodworking to construct the base bid and alternate #2 for the Manito Park overhead structure, in the amount of \$74,259.33, including tax, with the contingency that The Friends of Manito will contribute \$20,000.00 to fund the project.
- The Committee recommended Park Board contract with KPFF Consulting Engineers to create a 30% set of plans, specifications, and cost estimate for the Don Kardong Bridge rehabilitation, not to exceed \$75,000.00.
- Washington Wildlife and Recreation Coalition staff provided information packets and reviewed Coalition history, purpose, community benefits of projects, and new grant categories.
- A design consultant for the Dutch Jakes Park renovation has been selected. The design process goes until next spring. Public outreach, Park Board endorsements, neighborhood involvement, concerns, timelines and development of a MOU with the Trust for Public Lands were reviewed.
- Hangman/Latah Corridor Trail Update - Various community professionals and landscape architect students attended a charrette last week. Four groups looked at trail connection opportunities throughout the area. A visioning document will be presented at a future Committee meeting for Park Board endorsement.
- Bosch Lot Planning Update - Administration hired a consultant to look at numerous concepts and options, while maintaining many priorities in the Joint Resolution. Eventually various concepts and priorities will be available for public comment.
- Attorneys involved with the Bracher Property are discussing positive resolution, with the goal of acquisition in mind.
- The October Park Operations Financial report was not available. It will be reviewed at the Finance Committee meeting.

- Staff gave a verbal Capital Projects report. Positive comments included the Byrne Park restroom, Mission Park Phase 2, Fish Lake Trail asphalt crack improvements, Manito Park roof replacements, and Rochester Heights Phase 1.
- During the Parks Report Park Operations staff were commended for their contributions to the positive outcomes of many capital projects this year. The Downriver regular and disc golf courses and an associated stormwater project were discussed. Interested Park Board members were invited to attend the Legislative Day in Olympia on Thursday, January 25, 2018, along with Park staff.
- There was no CSO Tank update.

MINUTES

Chairperson Greta Gilman convened the meeting at 3:00 pm. Guests were introduced. Agenda order changes were announced.

Action Items:

1. **Cowley Park "Christmas Park" Proclamation** – A draft proclamation to designate Cowley Park as "Christmas Park" during the holiday season from November 22 through December 31, 2017, was provided. Per staff, this action honors the Extreme Team's annual lighting of the park adjacent to the Sacred Heart Children's Hospital for the enjoyment of the patients and their families who are away from their homes during the holiday season. The Extreme Team representative reviewed event elements and partners, positive impacts of the event, and community support for the temporary name of "Christmas Park". Clarifications, questions, concerns, and multi-level benefits of the event were discussed.

Motion #1: Mike Fagan moved approval of the Cowley Park Proclamation, with minor edits.

Sally Lodato seconded.

Motion passed, unanimously.

2. **Manito Park Overhead Structure (\$74,259.33 with tax)** – Bid and supporting documents were provided. Staff reviewed the project scope, location, benefits, and contingency of The Friends of Manito providing funding of \$20,000.00, with the remaining amount from the existing Parks Capital Fund. Three bids were received. Staff recommendation is to contract with low bidder, R&R Woodworking, for the base bid and alternate #2. Questions and clarifications were discussed.

Motion #2: Greta Gilman moved to approve contracting with R&R Woodworking to construct the base bid and alternate #2 for the Manito Park Overhead Structure in the amount of \$74,259.33, including tax, with the contingency that The Friends of Manito will contribute \$20,000.00 to fund the project.

Mike Fagan seconded.

Motion carried, unanimously.

3. **Don Kardong Bridge 30% Design Contract** – Supporting documents were provided. Staff reviewed project background and scope, funding, the selection process, and recommendation to contract with KPFF Consulting Engineers to create a 30% set of plans, specifications, and cost estimate in the amount of \$74,449.00. This is the same group that did the original bridge study. Questions and clarifications were discussed.

Motion #3: Greta Gilman moved to contract with KPFF Consulting Engineers to create a 30% set of plans, specifications, and cost estimate for the Don Kardong Bridge rehabilitation, not to exceed \$75,000.00.

Ross Kelley seconded.

Motion carried, unanimously.

Discussion Items:

1. **Washington Wildlife and Recreation Coalition Presentation** – Information packets were provided. Coalition staff was introduced and reviewed Coalition history, purpose, organization evolution, community benefits of projects, and new grant categories. Questions, clarifications, and grant opportunities were discussed.

2. **Dutch Jakes Park Plan Update** – Staff reviewed that a design consultant has been selected, the design process goes until next spring, public outreach, Park Board endorsements, neighborhood involvement, concerns, timelines, and development of a MOU with the Trust for Public Lands.

3. Hangman/Latah Corridor Trail Update – Per staff, various community members, including professionals and landscape architect students, attended a charrette last week. Four groups looked at trail connection opportunities throughout the area. A visioning document will be formulated and presented at a future Committee meeting for Park Board endorsement. Questions were discussed during staff review.

4. Bosch Lot Planning Update – Per staff, administration hired a consultant to look at numerous concepts & options, while maintaining many priorities in the Joint Resolution. Eventually various concepts and priorities will be available for public comment. Questions, clarifications, timeline, and approval process expectations were discussed.

5. Bracher Property Update – Per staff, while there are no results yet, the various involved attorneys are discussing positive resolution with the goal of acquisition in mind.

Standing Report Items:

1. Park Operations Monthly Financial Report – The October report was not available. It will be reviewed at the Finance Committee meeting.

2. Parks Capital Projects Update – Several positive comments in a verbal staff report included the Byrne Park restroom, Mission Park Phase 2, Fish Lake Trail asphalt crack improvements, Manito Park roof replacements, and Rochester Heights Phase 1.

3. Parks Report – Park Operations staff were commended for their contributions to the positive outcomes of many capital projects this year. The Downriver regular and disc golf courses and an associated stormwater project were discussed. Interested Park Board members were invited to attend the Legislative Day in Olympia on Thursday, January 25, 2018, along with Park staff. AI will coordinate with Park Board members that would like to attend.

4. CSO Tank Update – No update was given this month.

The Chairperson adjourned the meeting at 4:30pm. Next scheduled meeting is December 6, 2017, at 3:00 p.m. at the Park Operations Complex, located at 2304 East Mallon, Spokane, Washington.



Park Board proclaims Cowley Park to be designated as **"Christmas Park"** during the holiday lighting season, November 22 through December 31, 2017.

This proclamation honors the KXLY 4 News Extreme Team's annual holiday lighting of Cowley Park, adjacent to the Sacred Heart Children's Hospital.

The KXLY 4 News Extreme Team and their partners are working to bring a little taste of home straight to Sacred Heart Children's Hospital. Crews have been putting in extra hours to make sure the project is done before Wednesday, November 22. That's when the Extreme Team will flip the switch, and Cowley Park will be covered in Christmas lights, giving the children a winter wonderland out their hospital windows.

The proclamation reads as follows:

WHEREAS, the KXLY 4 News Extreme Team and their partners have decorated Cowley Park with Christmas lights; and

WHEREAS, this tree lighting first occurred for the 2016 holiday season, and there are plans to make the holiday lighting an annual event;

WHEREAS, this tree lighting has brightened the spirits of many children and their families at Sacred Heart Children's Hospital during the holiday;

NOW, THEREFORE, I, Christopher J. Wright, President of the City of Spokane Park Board do hereby recognize and proclaim Cowley Park from November 22 to December 31, 2017 to be known as

"CHRISTMAS PARK"

In the City of Spokane.

I, Christopher J. Wright, President of the Spokane Park Board, do hereunto certify this designation this the 9th day of November, 2017.

Christopher J. Wright
City of Spokane Park Board President



2017.11.01

CONSTRUCTION CONTRACT | MANITO PARK OVERHEAD STRUCTURE

INTENT

Contract with 'R&R Woodworking, Inc.' to construct the 'base bid' & 'alternate #2' scope for the 'Manito Park Overhead Structure' in the amount of \$74,259.33 including tax. Friends of Manito to contribute up to \$20,000.00 to fund project.

<u>ITEM</u>	<u>QTY</u>	<u>UNIT PRICE</u>	<u>EXTENDED COST</u>
Base Bid - Construct new overhead stucture	1.0	\$ 71,931.01	\$ 71,931.01
Alt #2: Demolish & Dispose of ex. dilapidated structure	1.0	\$ 2,328.32	\$ 2,328.32
Subtotal Base Bid & Alt. 2 (includes tax):			\$ 74,259.33

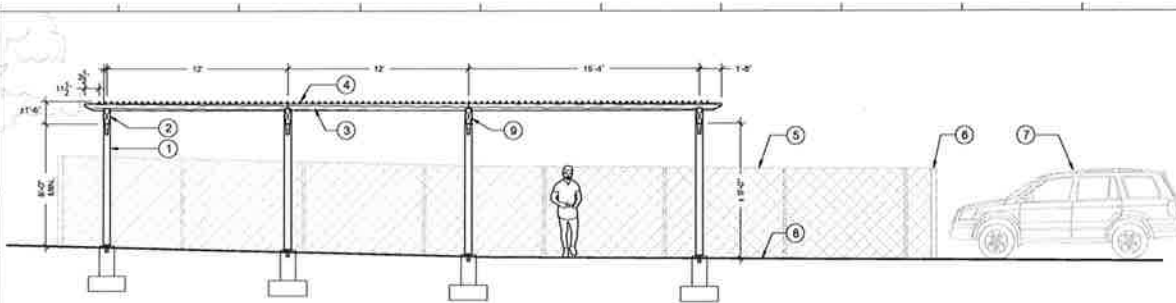


>\$25,000 & ≤\$45,000 – Single Craft/Trade
>\$40,000 & ≤\$90,000 -- Multiple Craft/Trade

CITY OF SPOKANE
MANITO PARK OVERHEAD STRUCTURE
REQUEST FOR QUOTES

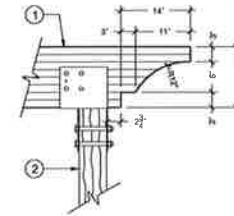
SECTION I. QUOTE PREPARATION AND EVALUATION

1. **PRE-BID CONFERENCE.** A pre-bid conference will be held **Tuesday, October 4th, 2017 at 1:00 PM.** The pre-bid will be held on site at the Manito Park Maintenance Yard, located at 1702 S. Grand Boulevard, directly East of the Manito Park Duncan Gardens.
2. **QUOTE PREPARATION.** Quotes shall be typed or printed in ink, prepared on the form furnished by the City of Spokane and signed by an authorized person of the Contractor's firm. If errors are made, the corrections shall be initialed by the person signing the quote.
3. **SUBMISSION OF QUOTES.** Submit one copy of the quote by **1:00 PM on OCTOBER 16, 2017 to NICK HAMAD at 5TH FLOOR, CITY HALL – 808 W. SPOKANE FALLS BLVD. SPOKANE, WA 99201.**
4. **CONTRACTOR'S REPRESENTATION.** The Contractor by making its quote represents that it has read and understands the specifications; and has visited the site and familiarized itself with the local conditions under which the work is to be performed.
5. **PREQUALIFICATION.** Prior to the award of contract, the Contractor shall be required to submit evidence of sufficient facilities, equipment, experience and financial ability to insure completion of the work, unless waived by the City.
6. **AWARD OF CONTRACT.** Award of contract, when made by the City, will be to low responsive responsible Contractor. Unsuccessful firms will not automatically be notified of results.
7. **REJECTION OF QUOTES.** The City reserves the right to reject any or all quotes, to waive minor deviations from the specifications, to waive minor informalities in quote process whenever it is in the City's best interest, and to accept or reject all or part of this Request for Quotes, at the prices shown.
8. **CONTRACTOR REGISTRATION.** The Contractor shall be a Washington State registered or licensed contractor at time of quote submittal.
9. **PUBLIC WORK REQUIREMENTS.** The scope of work for this project constitutes a public work under state law. Contractors are warned to take into consideration statutory legal requirements, particularly, the payment of prevailing wages, payment/performance bond and sales tax implications in making their quotes.
10. **PROJECT CONTACT.**
The project contact for the City of Spokane (Owner) is:
Name: **Nick Hamad**
Department: **Parks and Recreation**
Phone: **509.363.5452**
Email: **nhamad@spokanecity.org**



1 TRELLIS ELEVATION LOOKING NORTH

- 1 POST, 6"x6" CEDAR, 8' HEIGHT TO TOP POST ABOVE ADJACENT FINISH GRADE, MIN.
- 2 BEAM, 5 1/4" x 12" YELLOW ALASKAN CEDAR G.L.B. LENGTH PER PLAN, TYP.
- 3 JOIST, 4"x6" CEDAR, LENGTH PER PLAN.
- 4 RAFTER, 2"x2" CEDAR, LENGTH PER PLAN.
- 5 EX. CHAIN LINK FENCING (BEYOND).
- 6 EASTERN FENCE LINE.
- 7 PARKING AREA.
- 8 EX. FINISH GRADE.
- 9 COLUMN CAP TYPE 1, SIMPSON STRONG-TIE CCS 1/4"-6", PAINT, OR APPROVED EQUAL. SEE DETAIL.

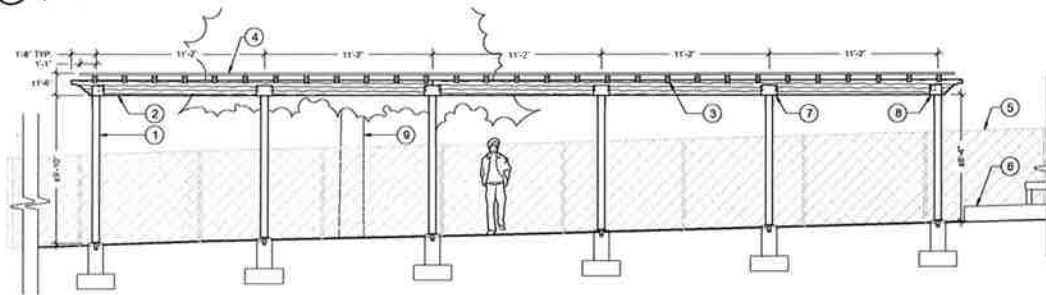


2 DECORATIVE BEAM END

- 1 BEAM.
- 2 POST.

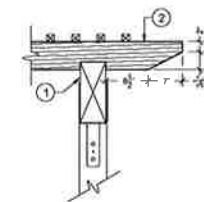
P-MAJ-WAN-83

P-MAJ-WAN-88



3 TRELLIS ELEVATION LOOKING WEST

- 1 POST, 6"x6" CEDAR, 8' HEIGHT TO TOP POST ABOVE ADJACENT FINISH GRADE, MIN.
- 2 BEAM, 5 1/4" x 12" YELLOW ALASKAN CEDAR G.L.B. LENGTH PER PLAN, TYP.
- 3 JOIST, 4"x6" CEDAR, LENGTH PER PLAN.
- 4 RAFTER, 2"x2" CEDAR, LENGTH PER PLAN.
- 5 EX. CHAIN LINK FENCING (BEYOND).
- 6 EX. RAISED GARDEN BEDS TO REMAIN. PROTECT IN PLACE.
- 7 COLUMN CAP TYPE 1, SIMPSON STRONG-TIE CCS 1/4"-6", PAINT, OR APPROVED EQUAL. SEE DETAIL.
- 8 COLUMN CAP TYPE 2, SIMPSON STRONG-TIE ECCS 1/4"-6", PAINT, OR APPROVED EQUAL. SEE DETAIL.
- 9 TREE TO REMAIN (BEYOND), PROTECT IN PLACE.

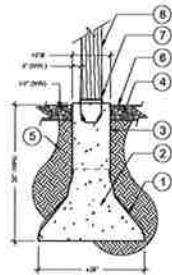


4 DECORATIVE JOIST END

- 1 BEAM.
- 2 JOIST.

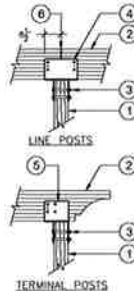
P-MAJ-WAN-84

P-MAJ-WAN-89



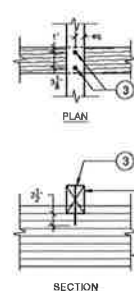
5 TRELLIS POST & FOOTING

- 1 PRE-MANUFACTURED CONCRETE SPREAD FOOTING FORM, MODEL 'BF28' MANUFACTURED BY BIGFOOT SYSTEMS, INC. OR APPROVED EQUAL.
- 2 CONCRETE, 3000 PSI (MIN).
- 3 CONCRETE TUBE FORM, ATTACH TO FOOTING FORM PER MANUFACTURER'S WRITTEN INSTRUCTIONS.
- 4 3/4" CLEAN CRUSHED GRANITE STONE.
- 5 COMPACTED SUBGRADE, COMPACT TO 95% REL. DENSITY.
- 6 FINISH GRADE.
- 7 STANDOFF POST BASE, SIMPSON STRONG-TIE PBS66 OR APPROVED EQUAL. ATTACH TO POST PER MANUFACTURER'S WRITTEN INSTRUCTIONS.
- 8 POST, 6"x6" CEDAR, TYP.



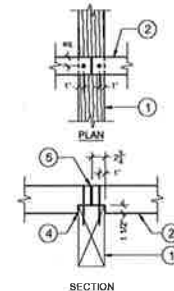
6 POST TO BEAM CONNECTION

- 1 POST, 6"x6" CEDAR.
- 2 BEAM, 5 1/4" x 12" YELLOW ALASKAN CEDAR G.L.B.
- 3 2" ZINC PLATED THRU-BOLT & NUT, LENGTH AS REQUIRED, TYP. OF 2.
- 4 COLUMN CAP TYPE 1, SIMPSON STRONG-TIE CCS 1/4"-6", PAINT, OR APPROVED EQUAL. ATTACH TO BEAM W/ (4) 3/4" ZINC PLATED THRU-BOLTS & NUTS, LENGTH AS REQUIRED.
- 5 COLUMN CAP TYPE 2, SIMPSON STRONG-TIE ECCS 1/4"-6", PAINT, OR APPROVED EQUAL. ATTACH TO BEAM W/ (4) 3/4" ZINC PLATED THRU-BOLTS & NUTS, LENGTH AS REQUIRED.
- 6 BEAM BUTT JOINT (WHERE OCCURS).



7 JOIST TO BEAM CONNECTION

- 1 BEAM.
- 2 JOIST.
- 3 TIMBER SCREW, 8" LENGTH, 2200 SHANK, SIMPSON STRONG-TIE SDWS22800DB OR APPROVED EQUAL. 2 SCREWS PER CONNECTION, (TYP).
- 4 NOTCH ALL JOISTS ATOP BEAMS.



8 JOIST BUTT JOINT & ATTACHMENT

- 1 BEAM.
- 2 JOIST.
- 3 TIMBER SCREW, 8" LENGTH, 2200 SHANK, SIMPSON STRONG-TIE SDWS22800DB OR APPROVED EQUAL. 1 SCREW PER JOIST END, (TYP).
- 4 NOTCH ALL JOISTS ATOP BEAMS.
- 5 1/4" VOID BETWEEN JOIST ENDS.



CITY OF
SPOKANE
PARKS
& RECREATION



MANITO PARK NURSERY
SPOKANE PARKS - 1702 S. GRAND BLVD.
TRELLIS DETAILS

SCALE IS ONE INCH ON ORIGINAL DRAWING. IF NOT ONE INCH ON THIS SHEET, ADJUST SCALES ACCORDINGLY.

DATE: _____
DRAWN BY: MH
CHECKED BY: NAH
PROJECT NO: _____

REVISION
1
2

SHEET 11 OF 12

L4.1
DETAILS



2017.10.16

MANITO PARK OVERHEAD STRUCTURE								
CONTRACTOR	BASE BID	TAX (8.8%)	TOTAL BASE BID		ADD 2	TAX (8.8%)	TOTAL ADD 2	TOTAL BID
R&R WOODWORKING	\$ 66,113.06	\$ 5,817.95	\$ 71,931.01		\$ 2,140.00	\$ 556.43	\$ 2,328.32	\$ 74,259.33
ERRG	\$ 65,100.00	\$ 5,728.80	\$ 70,828.80		\$ 6,000.00	\$ 897.60	\$ 6,528.00	\$ 77,356.80
WESTERN STATES CONSTRUCTION	\$ 90,000.00	\$ 7,920.00	\$ 97,920.00		\$ 8,000.00	\$ 1,232.00	\$ 8,704.00	\$ 106,624.00
-	\$ -	\$ -	\$ -		-	-	-	\$ -
-	\$ -	\$ -	\$ -		-	-	-	\$ -

>\$25,000 & ≤\$45,000 -- Single Craft/Trade
>\$40,000 & ≤\$90,000 -- Multiple Craft/Trade

QUOTE

TO: CITY OF SPOKANE, WASHINGTON
PROJECT NAME: MANITO PARK OVERHEAD STRUCTURE

The undersigned firm has examined the site, read and understands the specifications for the above project and proposes to do the described work at the following price:

Item	Description	Amount
1	BASE BID:	\$ 66,113.06
2	WA STATE SALES TAX 8.8%	\$ 5,817.95
3	TOTAL BASE BID AMOUNT	\$ 71,931.01
2	ALTERNATE #1 - INCREASE TRELLIS SIZE	\$ 6,323.07
3	ALTERNATE #2 - DEMO EX. STRUCTURE	\$ 2,140.00
4	ALTERNATE #3 - SUB FRAMING MATERIAL	\$ - 1,663.08

The firm acknowledges receipt of addendum number 1 and agrees that its requirements have been included in this quote.

The firm agrees that its quote will NOT be withdrawn for a minimum of forty five (45) calendar days after the stated submittal date.

CONTRACTOR RESPONSIBILITY.

Washington State Contractor's Registration No. RR000RL0942CC

U.B.I. Number 602 564 459

Washington Employment Security Department Number 600-329077-00-4

Washington Excise Tax Registration Number 602-564-459

City of Spokane Business License Number T11047308 BOS

COMPLETION TIME. All work under the contract shall be started after the date of notice to proceed. Work once started shall be completed by **DECEMBER 31, 2017.**

LIQUIDATED DAMAGES. If the work is not completed within the stated completion time, the Contractor agrees to pay to the City liquidated damages in the amount of **\$100.00** for each and every day the work remains uncompleted.

For contracts up to \$150,000.00 including tax, the Contractor may opt for ten percent (10%) retainage in lieu of bond. YES X NO

FIRM NAME: R&R Woodworking, Inc

SIGNATURE: Ken R. R. R.

TITLE: Secretary / Treasurer PHONE: 509-981-9728

ADDRESS: Po Box 326 Medical Lake, WA 99022



2017.11.01

30% DESIGN CONTRACT | DON KARDONG BRIDGE REHABILITATION & REPAIR**INTENT**

Contract with 'KPFF consulting engineers' to create a 30% set of plans, specifications & cost estimate (PS&E) for the Don Kardong Bridge. The project seeks to produce an initial design concept & estimate for the pedestrian bridge per the recommendations in the 'Riverfront Park Bridges Inspection & Analysis'.

Project funding shall be provided by the Friends of the Centennial Trail up to \$75,000.00

<u>ITEM</u>	<u>QTY</u>	<u>UNIT PRICE</u>	<u>EXTENDED COST</u>
30% Plans, Specs & Estimates (PS&E)	1.0	\$ 63,449.00	\$ 63,449.00
Bridge Rendering	1.0	\$ 5,000.00	\$ 5,000.00
Management Reserve	1.0	\$ 6,000.00	\$ 6,000.00
Total Contract (not to exceed):			\$ 74,449.00



Photo 1 –Kardong Bridge Deck (Looking West)



Photo 2 – Kardong Bridge Elevation (Looking Northeast)

Exhibit A-1 Scope of Work

CITY OF SPOKANE PARKS AND RECREATION 30% PSE for the DON KARDONG BRIDGE REHABILITATION and REPAIRS

PROJECT DESCRIPTION

The City of Spokane Parks and Recreation Department (PARKS) has reviewed the City of Spokane report titled RIVERFRONT PARK BRIDGES INSPECTION & ANALYSIS dated November 14, 2014, and has determined to move forward with the recommended repairs to the following bridge:

- Don Kardong Bridge

The Don Kardong Bridge is a former rail bridge converted to carry the Centennial Trail over the Spokane River (pedestrian/bicycle use only). It carries no vehicular loads. It is located to the northwest of the intersection of Hamilton Street and Spokane Falls Blvd.

The bridge is five spans for a total length of approximately 380 feet. It is comprised of two riveted steel girders with an original deck of railroad ties over which a wood floor system has been installed. The walking surface is a combination of wood decking and textured steel plates. Wooden platforms have been constructed on the north side of the piers to provide river views and seating. Truss structures visible above the deck are non-structural decorative elements.

This scope of work is for the 30% level plans, specifications and engineers estimates (PSE). The 30% PSE includes the following items:

- Plans
 - cover sheet
 - plan layout and elevation sheet (defining work items and work limits)
 - detail sheets (as necessary for clarity of concept)
- Rendering of bridge in its final state
- Engineer's construction cost estimate

PROJECT TEAM

The project team tasked with completing this scope of work is as follows:

Owner (Project Administration)	City of Spokane
Prime Consultant	KPFF
Structural Engineering	KPFF

It is assumed that surveying, civil, electrical and geotechnical engineering services will not be necessary for this initial effort.

SCOPE OF WORK

The following is a scope of work for this project.

TASK NO. 1.0 – CONTRACT MANAGEMENT AND COORDINATION

KPFF shall provide consulting management services to ensure the successful completion of the project in compliance with this Agreement's stated goals, budget and schedule.

KPFF shall communicate proactively and responsively with PARKS to ensure open communications and that the needs of PARKS are met throughout the project development.

TASK NO. 2.0 – MEETINGS

KPFF assumes a total of three meetings in Spokane as follows:

1. Kick off meeting (incl. the KPFF Project Manager and Project Design Engineer)
2. Project coordination meeting (incl. the KPFF Project Manager)
3. Project presentation to Parks Board (incl. the KPFF Project Manager)

TASK NO. 3.0 – ANALYSIS, DESIGN AND DEVELOPMENT OF PSE CONTRACT DOCUMENTS

KPFF shall perform the following work items for the 30% PSE submittal:

1. Review all relevant existing documents related to the Don Kardong Bridge.
2. Develop concepts aligned with the recommendations stated in the RIVERFRONT PARK BRIDGES INSPECTION & ANALYSIS report dated November 14, 2014.
3. Coordinate all concepts with PARKS prior to proceeding with plans and cost estimates.
4. Develop the 30% level plans including the following:
 - a cover sheet
 - plan layout and elevation sheet (defining work items and work limits)
 - detail sheets (as necessary for clarity of concept)
5. Develop a color rendering of the final bridge.
6. Develop a 30% level construction cost estimate.
7. Coordinate development of the 30% PSE with PARKS to ensure the final product meets the project goals and is clearly aligned with the project vision for this stage of the design.
8. Submit items 2, 3, 4, and 5 on 11x17 inch bond paper (5 copies) and PDF.

TASK NO. 4.0 – SCHEDULE

KPFF shall deliver for PARKS review the draft 30% PSE and rendering four months following the notice to proceed. KPFF shall make final revisions and submit the final 30% PSE two weeks following the return of the reviewed plan set.

BUDGET

KPFF will perform the above scope of work for a not-to-exceed cost plus fixed fee of \$74,450 that includes \$68,450 for the stated scope of work and a \$6,000 Management Reserve to be used at the discretion of PARKS. See attachment(s) for budget backup.

EXHIBIT E-1**DON KARDONG BRIDGE REHABILITATION & REPAIR****CONSULTANT FEE DETERMINATION**

CITY OF SPOKANE PARKS AND RECREATION DEPARTMENT

30% LEVEL DESIGN

October 26, 2017

Classification	Total Hours	X	Raw Rate	=	Cost
Principal (Dave McMullen)	14.00	X	\$62.50	=	\$875
Project Manager (Tom Whiteman)	76.00	X	\$69.23	=	\$5,261
Technical Review (Tom Whiteman)	0.00	X	\$69.23	=	\$0
Senior Engineer (Structural & Civil)	100.00	X	\$42.40	=	\$4,240
Design Engineer (Structural & Civil)	172.00	X	\$35.16	=	\$6,048
CAD Tech (Structural & Civil)	168.00	X	\$39.00	=	\$6,552
Project Administrator (A. Fernando)	28.00	X	\$26.48	=	\$741
		X		=	
Total hours	558.00				
DSC Subtotal					\$23,717

Overhead (OH) Cost

$$\text{OH Rate x DSC} = 137.52\% \times \$23,717.44 = \$32,616$$

Fixed Fee (FF)

$$\text{FF Rate x DSC} = 30.00\% \times \$23,717.44 = \$7,115$$

Total KPFF Labor Cost \$63,449**Reimbursables**

Rendering		\$5,000.00
Subtotal		\$5,000.00

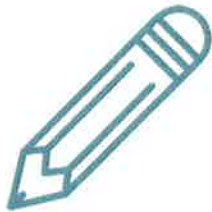
Subconsultant Costs (See Exhibit G)\$0.00**Management Reserve**\$6,000.00**GRAND TOTAL:** \$74,448.90

[illegible]

HOW WWRP WORKS



Someone recognizes a need in the community



A grant application is submitted to the RCO



The best projects are submitted to the legislature



Funds are dispersed and land is either acquired, developed, or renovated



The project is eventually completed and the community can enjoy recreating!

12 CATEGORIES OF WWRP



Forestland Preservation



Farmland Preservation



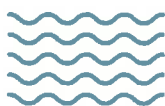
Riparian Protection



Trails



Natural Areas



Water Access



Critical Habitat



State Parks



Urban Wildlife Habitat



State Lands Development & Renovation



State Lands Restoration & Enhancement



Local Parks

City of Spokane WWRP Projects

WWRP Proposed Projects

3 projects

Project Name	Sponsor	WWRP Category	Proposed Funding
Southeast Youth Sports Complex Neighborhood Park	Spokane City Parks & Rec Dept	Local Parks	\$500,000
Three Islands Spokane River Water Access	Spokane City Parks & Rec Dept	Water Access	\$1,000,000
South Gorge Trail	City of Spokane	Trails	\$1,100,000



Washington
**Wildlife &
Recreation**
COALITION

Washington Wildlife &
Recreation Coalition
1402 3rd Ave, Ste 507
Seattle, WA 98101

WildlifeRecreation.org
206.748.0082

WWRP Funds Valuable Community Projects in:

Habitat Conservation



Outdoor Recreation



Working Lands Preservation

