



**Development and Volunteer
Citizen Advisory Committee**
5 p.m. Thursday, July 28, 2022
In-person and virtually via WebEx
Fianna Dickson – Marketing & Communications

Committee members

- X Kelly Brown – Committee chair/The Friends of Manito Park
- Greg Connolly – Friends of Spokane Skate Parks (Absent)
- X Trevor Finchamp – Friends of The Bluff
- X Lindsey Shaw – Community Assembly representative/Logan Neighborhood and Northeast Spokane
- X Cole Taylor – Friends of Riverfront Park
- Craig Volosing – Friends of Palisades (Absent)
- Maribeth Watt – Friends of Sky Prairie (Absent)
- X Lee Williams – Friends of Coeur d 'Alene Park

Park Board members

- Jennifer Ogden – Park Board president
- Christina VerHeul – Park Board Development & Volunteer Committee member

Guest

- Paul Kropp – Community Assembly

Park staff

- Garrett Jones
- Fianna Dickson
- Nick Hamad
- Jonathan Moog
- Pamela Clarke

Minutes

- A. **Call to order/introductions** – The meeting was called to order at 5:06 p.m. by committee chair Kelly Brown. See attendance list above.
- B. **Discussion items**
 - 1. Parks Master Plan overview – Garrett Jones and Nick Hamad presented a draft of the Parks Master Plan. Staff is continuing to work on identifying where the majority of the population is in relationship to park land. Additional focus is on development of existing land to better serve community needs. This has been organized by priority into three tiers, with first-tier priorities requiring immediate needs and third-tier priorities being outside the expected scope of short-term goals. First tier priorities include:
 - a. Accessibility survey needed to determine where access can be expanded
 - b. Establish a Parks land use/evaluation and partnership policy
 - c. Conduct a study to determine what land may be acquired
 - d. Codify land development fees
 - e. Develop a signage/wayfinding plan to increase accessibility
 - f. Further conservation/environmental education

- g. Market programs and create more programming for teens and adults
 - h. Clarify role of Parks in providing services to the homeless population
 - i. Provide Parks service in Shiloh Hills/East Central to fill in for the 10% of Spokane's population who do not currently have nearby park access
 - j. Work with Urban Forestry on tree planting
 - k. ADA access as part of activating the Spokane River and providing access to water sports
 - l. Add facilities to meet demand for dog parks, gathering spaces, disc golf, pickleball, hiking, biking, nature play and winter activities in Districts 1 and 3.
2. [Friends of the Bluff presentation](#) – Trevor Finchamp provided a presentation on behalf of Friends of the Bluff, highlighting the need for further development in the form of official parking lots, a proposal for new access points, and maintaining existing access that may be jeopardized in the future. Rocket Gulch, Qualchan Golf Course and Champion Park were identified as possible trailheads. Inland Empire Way may be an option in the future, but Coeur d'Alene Tribe was unable to discuss dispensations at this time. Tuscan Ridge is the current, most popular access point, but it is slated for development. The need for other trailheads was highlighted and the fact that this does not have adequate parking capacity.

C. Standing reports

1. None

D. Committee meeting schedule

1. Change standing monthly meeting time – Kelly explained the challenges of conducting 5 p.m. meetings at City Hall since the building is locked to the public at 5 p.m. For this reason, the group agreed to begin their monthly meetings at 4 p.m. The new schedule will begin next month and continue until the committee is able to find a location which is open late afternoons/early evenings with the appropriate technology needed for hybrid meetings.
2. Next meeting: The next regularly scheduled meeting is 4 p.m. Aug. 25, 2022, in-person at City Hall and virtually via WebEx.

E. Adjournment: The meeting was adjourned at 6:26 p.m.

A Big Bluff

with Little Access

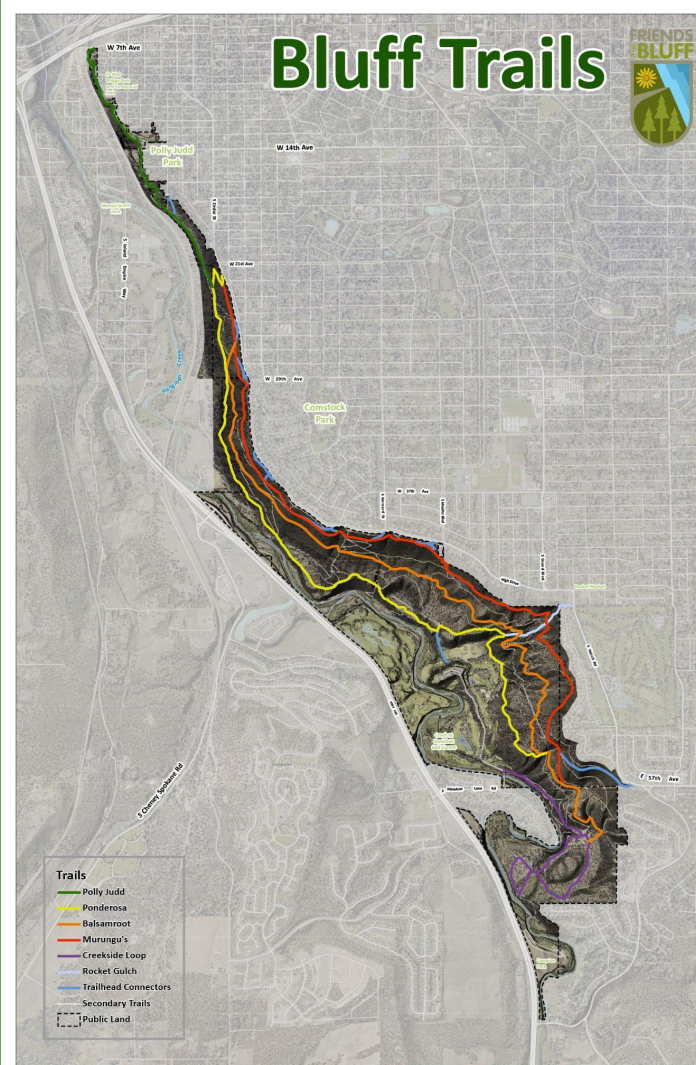
A Proposal by
Friends of the Bluff

BLUFF OVERVIEW

500 acres of natural space

30+ miles of trails

Over 500' elevation gain



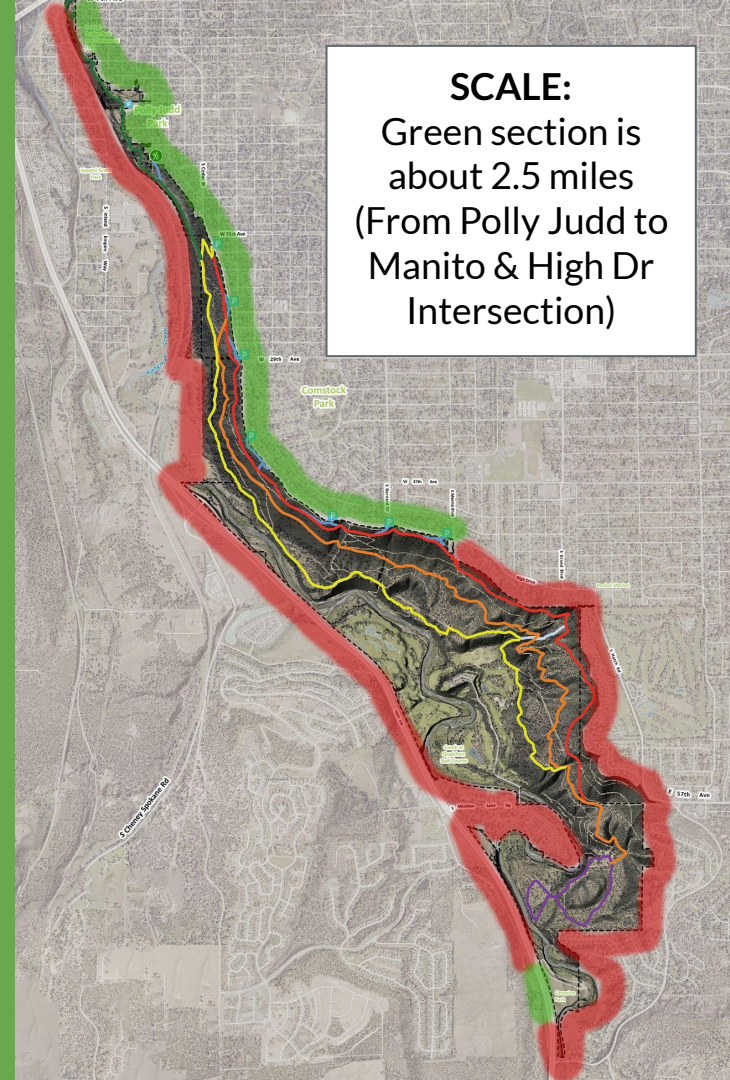
CURRENT ACCESS

12 parking lots or pull-offs

- Along High Dr, between 22nd & 40th ave
- Pull offs have room for anywhere from 2-12 cars (Total: 50-75 vehicles)
- One additional parking lot at Polly Judd Park

0 official parking lots:

- South of 40th Ave
- Entire west side (along the base of the bluff)



IMPROVING ACCESS

After extensive research, Friends of the Bluff recommends the improvement or expansion of the following 5 access points:

1. Rocket Gulch (43rd and Hatch)
- 2a. South end of the Qualchan Golf Course
- 2b. North end of the Qualchan Golf Course
3. Campion Park
- 4a. The end of Inland Empire Way cul-de-sac
- 4b. Pull-off along Inland Empire Way
5. Tuscan Ridge (57th and Hatch)





1. Rocket Gulch

Serves Comstock & Southgate residents
(Population: 16,315)

What's Appealing

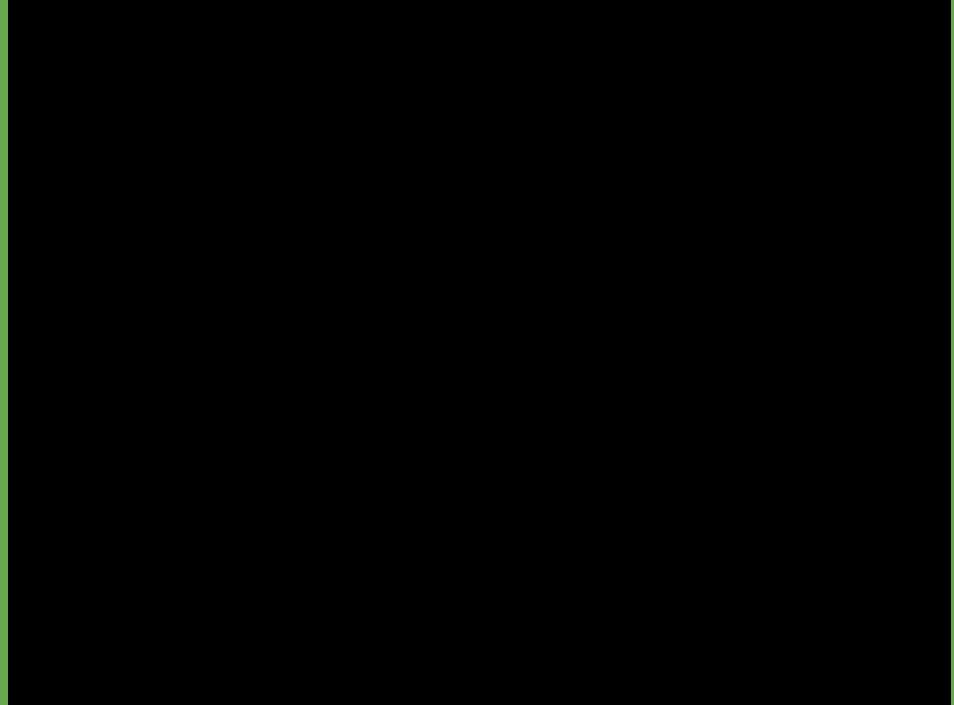
- Serves the most residents
- Pre-established trail & access
- Promising parking potential in city ROW

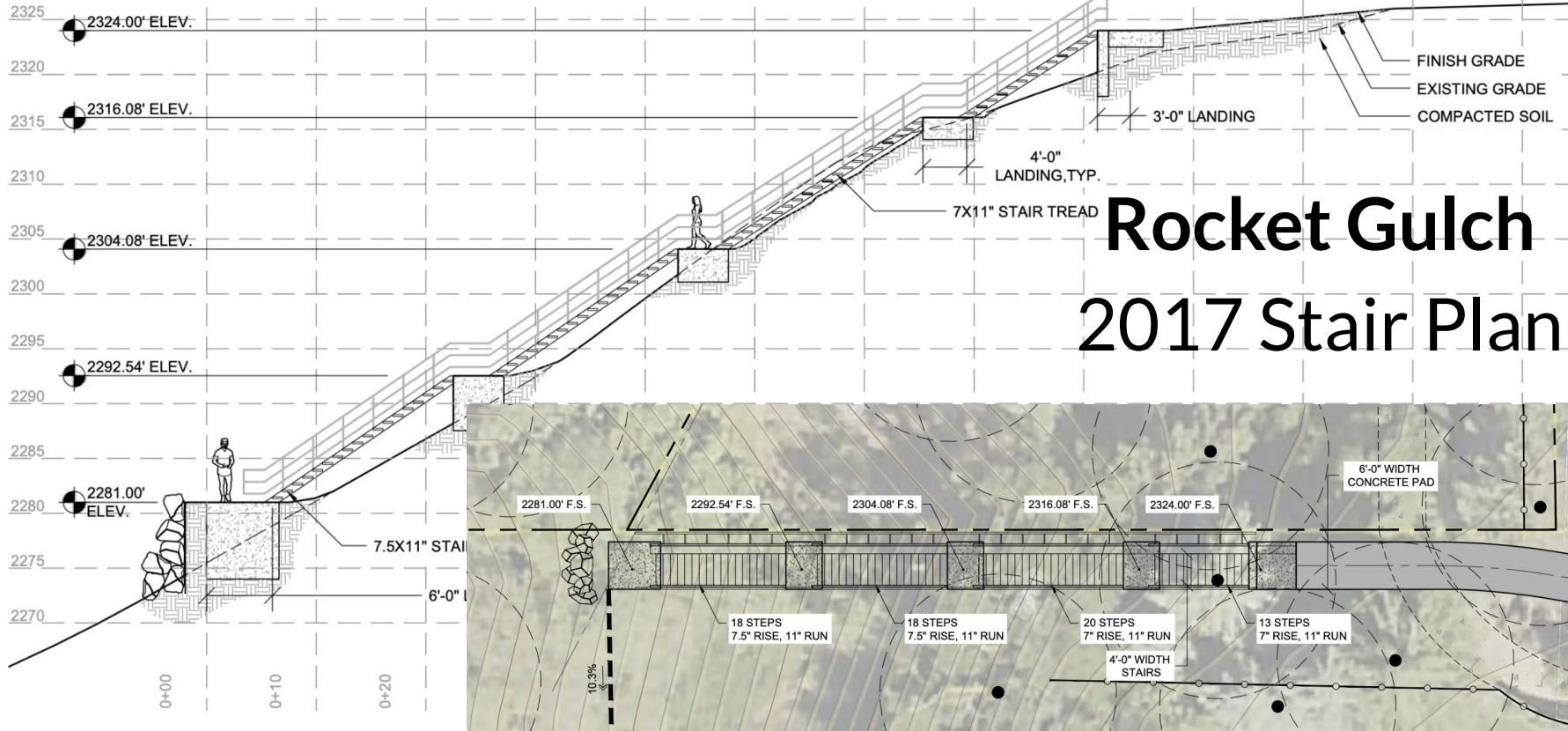
The Barriers

- Need to establish a parking plan
- The trail needs significant upgrades
- Neighbors want improvements to be completed by the city

Rocket Gulch's Current Condition

The Rocket Gulch trail is steep, actively eroding, and difficult to navigate even for the most sure-footed hiker. If it isn't improved soon, it is an accident waiting to happen.





Rocket Gulch 2017 Stair Plan

FINISH GRADE
EXISTING GRADE
COMPACTED SOIL

3'-0" LANDING

4'-0" LANDING, TYP.

7X11" STAIR TREAD

6'-0" WIDTH CONCRETE PAD

2281.00' F.S.

2292.54' F.S.

2304.08' F.S.

2316.08' F.S.

2324.00' F.S.

18 STEPS
7.5" RISE, 11" RUN

18 STEPS
7.5" RISE, 11" RUN

20 STEPS
7" RISE, 11" RUN

13 STEPS
7" RISE, 11" RUN

4'-0" WIDTH STAIRS

7.5X11" STAIR TREAD

6'-0" LANDING

0+00

0+10

0+20

10.3%

2325
2324.00' ELEV.

2320
2316.08' ELEV.

2315
2304.08' ELEV.

2310
2292.54' ELEV.

2305
2281.00' ELEV.

2300

2295

2290

2285

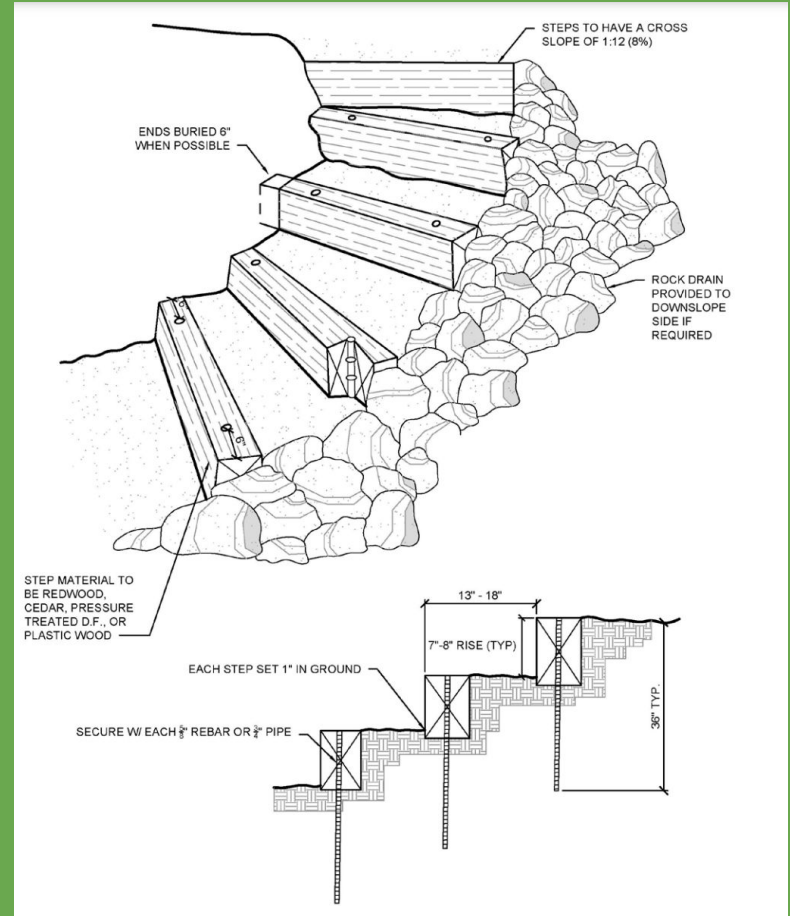
2280

2275

2270

Rocket Gulch

Alternative Approaches



Rocket Gulch Parking Proposal

- 60' by 100' section of the Garfield St ROW (yellow space holds 8-12 vehicles)
- Room for another 20-30 cars on 43rd ave, between Scott & Garfield
- Patty Kells and Eldon Brown have both expressed support
- They recommended beginning some community engagement





2a & 2b: Qualchan Golf Course

Serves Latah/Hangman, Southgate, Moran Prairie, and Comstock residents (Population: 28,908) and all South Hill residents with limited-mobility

What's Appealing

- Already has bridges over Hangman Creek
- Two developed trails
- Room for parking lots

The Barriers

- Need to modify gate to allow off-season pedestrian passage
- Need clear signage and fencing to limit walking on the playable course
- Need to work with golf course management to establish and communicate the rules to the public

2a. Golf Course (South)

The bridge at the end of Meadowlane Rd is currently the public's only opportunity to cross Hangman Creek and access the bluff. Adding parking on course property might be easier, but vehicle access would be restricted when the course is closed. The best option may be to work with a private owner along Meadowlane Rd.



2b. Golf Course (North)

In season, hikers are able to park in the main lot near the club house and walk down a paved path before veering northwest into the tree line. Increasing awareness of this trailhead would likely increase revenue at the course's restaurant and bar, but could impact parking for golfers.



Qualchan Golf Course: Prior Discussions

Email from Garrett Jones to Nick Hamad, Mark Poirier, & Phil Larkin (12/15/20)

*Councilmember Kinnear forwarded me your message and we would be happy to continue our relationship and see what pedestrian access opportunities we have. We have recently worked with our partners and stakeholders to **create a planning document to evaluate pedestrian connectivity, trails and access points along the Latah Valley** and in the process of creating master plans for each of our City golf courses. I am including Nick Hamad, our Landscape Architect, and Mark Poirier, our Golf Manager. **With my support, Nick and Mark will be able to work with you and the Friends of the Bluff to look at win-win solutions.***

Nick Hamad Correspondence (7/27/22)

Making that connection is valuable for bluff trail users...Access across the golf course bridge and around the playable course is achievable with some physical improvements to the course to address the concerns of the golfers & golf maintenance/management staff. That would likely be some fencing to limit walking on the playable course & delineated trail routes to address superintendent concerns - [as well as] an alternative [approach] for parking out on Meadowlane Rd rather than the golf course road.

1/7/21 Meeting Summary

Summary:

Mark discussed the focus of the organization, profit structure, and nature of contract status of Golf Pros. He stressed the importance of keeping the course secure and not incurring more loss by way of vandalism or damage to turf/equipment.

Nick gave an overview of Latah/Hangman study and asked about the possibility of a new gate on the course side.

I presented ways in which the course could modify access and offered financial support.

Mark agreed to

- put a sign on the gate informing users of course hours of operation. (per follow up discussion Mark needs to iron out the details)
- remove the sign threatening prosecution for users engaging in "Winter Activities". [See photo](#)
- abstain from rumored gate hardening

Friends of the Bluff (FOB) suggestions/offers:

- The organization could pay for gate modifications, camera, and signage.
- Security of course could be improved by a camera at the bridge.
- Signage could help to direct use away from course grounds and toward parkland.

An aerial photograph of a park area. A large green circle with a black border contains the number '3'. A purple line outlines a section of the park. A green line traces a path through the park. A dashed black line outlines a specific area. A blue 'P' icon and a yellow icon with a building are visible. The text 'Champion Park' is written in green and white at the bottom.

3

3. Champion Park

Serves Latah/Hangman, Southgate, Moran Prairie, and Comstock residents (Population: 29,812) and all South Hill residents with limited-mobility

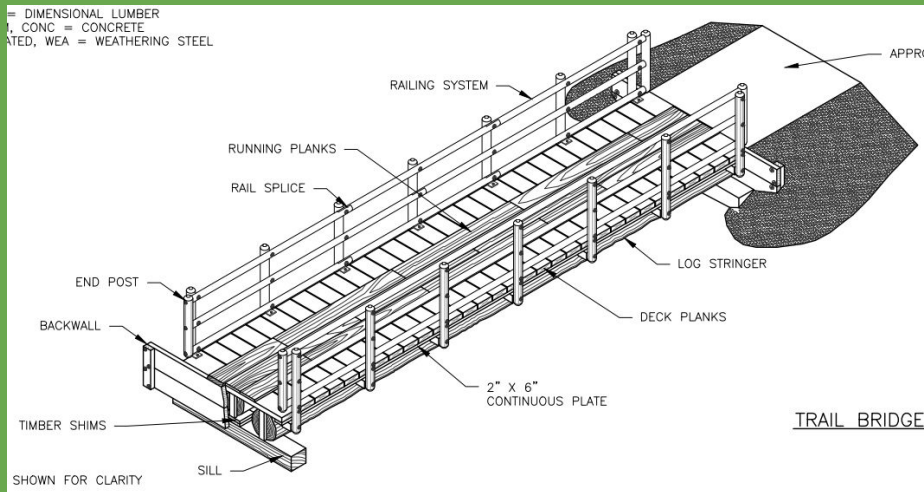
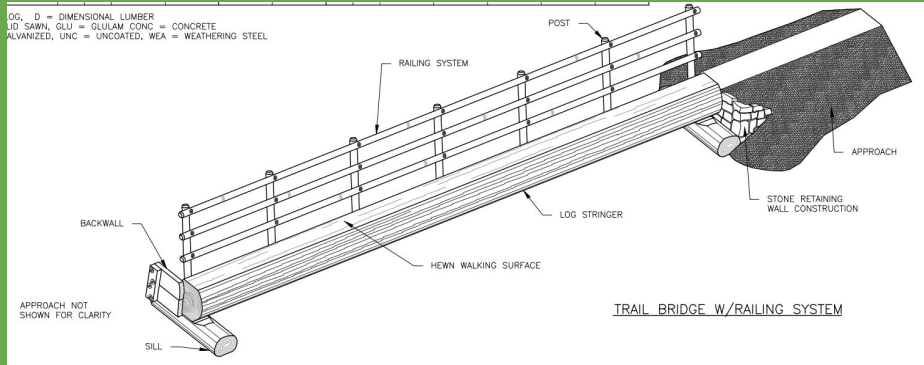
What's Appealing

- Widely accessible Conservation Futures property
- Parking lot and established trail

The Barriers

- **Requires a new bridge**
- Quick turnoff into parking lot from 195
- Furthest distance from the majority of the trail network

3. Campion Park





4a & 4b Inland Empire Way

Friends of the Bluff's contacts within the Coeur d'Alene Tribe have told us that they are very supportive of engaging with the Parks Dept and the public at some point in the future. However, right now, their Tribal Council is unwilling to discuss any dispensations until they are concrete in their own vision for the property.

4a. Inland Empire Way

Serves Cliff-Cannon, Latah/Hangman, Grandview/Thorpe, Riverside, Peaceful Valley, Browne's Addition, West Hills residents (Population: 24,736)



What's Appealing

- Already has parking
- In an area that is already slated for modification (DOT northbound-only connection between Cheney-Spokane Road and Inland Empire Way)

The Barriers

- Need Avista and Coeur d'Alene Tribe's approval
- Requires new gate and fencing

4b. Inland Empire Way

Serves Latah/Hangman, Southgate, Moran Prairie, and Comstock residents (Population: 29,812) and all South Hill residents with limited-mobility



What's Appealing

- Alternative to Champion Park trailhead for those traveling northbound on 195
- In an area that is already slated for modification

The Barriers

- Limited space for parking lot (4-5 cars)
- Needs Avista and Coeur d'Alene Tribe's approval, a new gate, and fencing

5: Tuscan Ridge

Serves Comstock, Southgate, and Moran Prairie residents (Population: 24,874)

The Situation

The bluff's most popular access point is slated for development. As a result, the parking lot will likely be reduced from a 30 car capacity to 6.

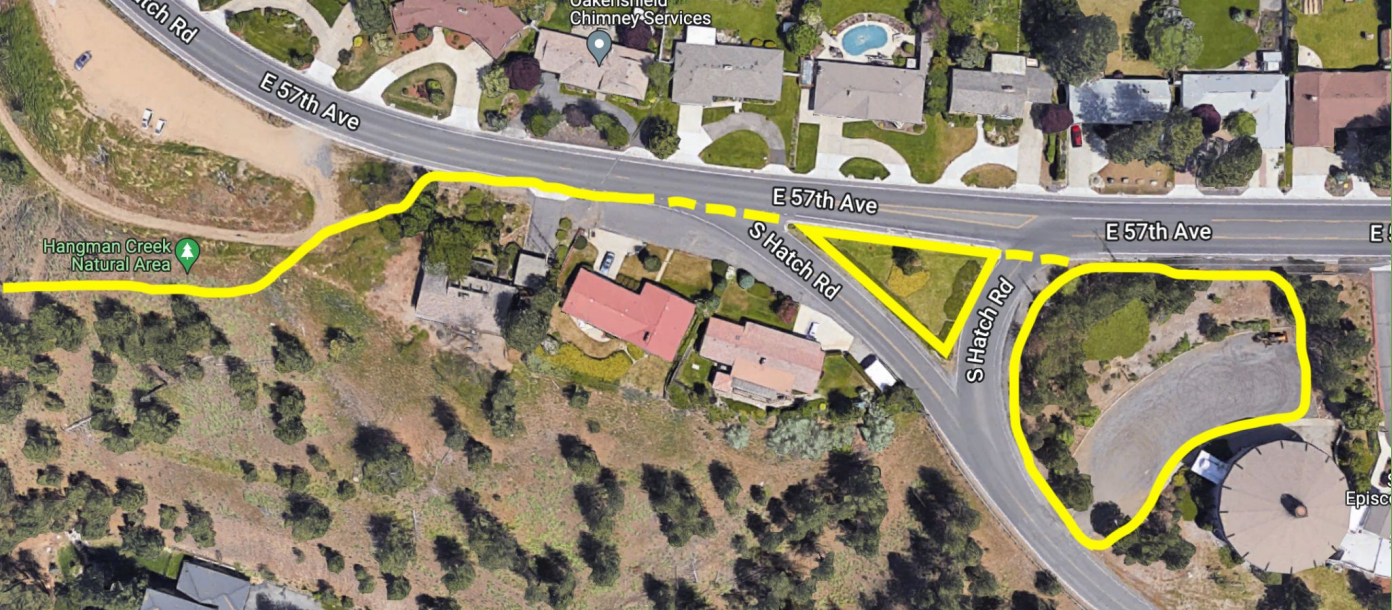
Potential Solution

St Stephen's is open to discussing an arrangement with their parking lot

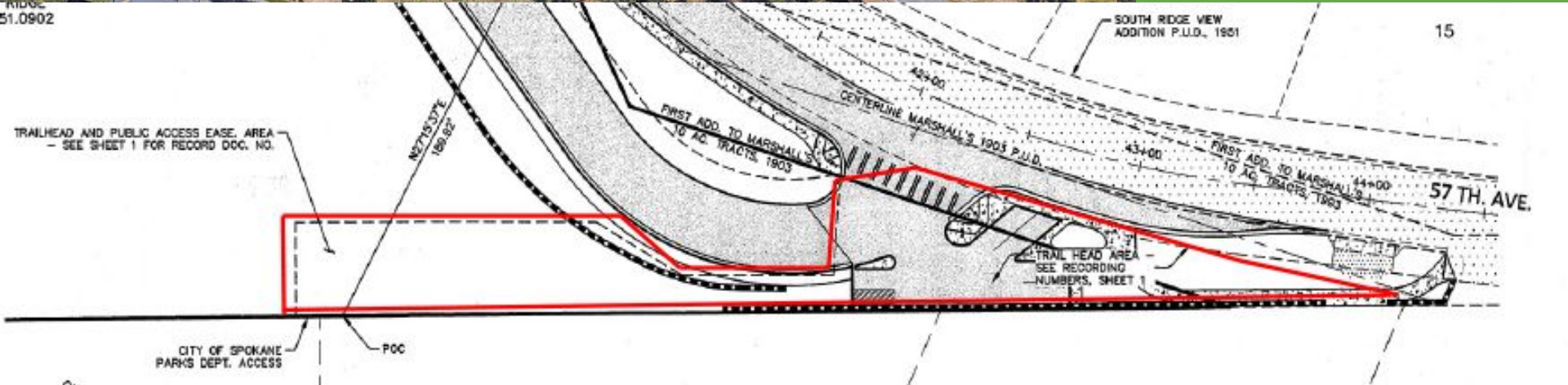
Likely Barrier

New crosswalks and sidewalks may be needed to access additional parking





5. Tuscan Ridge



REASONS TO PURSUE

South Hill Residents Have Voiced Support

Master Plan Survey's Interactive Map Results:

Qualchan gate access: 25 comments/likes

Rocket Gulch: 100+ comments or likes

~225 Bluff-Related Comments Out of 1301
Map Interactions (~17%)

2020 Support for Public Acquisition of
“Pilcher Property” and expansion of
public access from the base of the bluff:

Total Public Comments: 469

District 1: 53

District 2: 141

District 3: 70

Other: 205

REASONS TO PURSUE

Matches Master Plan Goals

Goal B: Objective 2

Regarding locations 2, 3, & 4: “The Latah Valley Hangman Creek corridor and Fish Lake Trail gap between Government Way and the Centennial Trail both represent locations in need of additional trail development. Previous studies have been completed in both of these reaches and should be utilized in developing additional trails and trail connections in these area specifically”

Regarding all bluff trailheads: “Develop standards for trail heads that promotes them as a full-service stop, providing users with signage and maps, trash cans, rest rooms and bike maintenance tools.”

- *Spokane Parks Dept Master Plan (Pg 93)*

REASONS TO PURSUE

Change the Public Perception of “The Bluff”

New Name

The Spokane and Coeur d’Alene Tribes have expressed interest in restoring the original name of the bluff. They are currently working together to determine their mutual recommendation.

New Trailhead Signs

Friends of the Bluff has been working with the city to plan and install 5-10 trail maps at various bluff access points. Friends of the Bluff and private donors will fund this initiative but we want to make sure the trail maps are accurate and representative of the future.

New Appreciation

The base of the bluff offers a relaxing, scenic hike that the rest of the bluff can’t provide. It also allows less able-bodied individuals to enjoy the nature around them.

SUGGESTED APPROACHES

After taking the current obstacles and opportunities into consideration, Friends of the Bluff recommends prioritizing the following steps:

1. Finalize Rocket Gulch trail and parking plan
2. Revisit options for Qualchan access points with golf management
3. Pursue potential bridge options for Campion Park?
4. Apply for Funding
 - a. State RCO Grant
 - b. Parks Foundation Grant
 - c. Other?

In the next 5 to 10 years, the bluff is poised to become...

- A cultural and natural resources educational hub ←
- One of the best trail-running and mountain biking destinations in the region ←
- A scenic creekside destination for those with limited mobility ←

It just needs a little more support.

Contact

Trevor Finchamp

Phone: 509-992-3623

Email: tfinchamp@friendsofthebluff.org