

WASHINGTON CLIMATE
PARTNERSHIP



Washington State
Department of
Commerce



DEPARTMENT OF
ECOLOGY
State of Washington

Washington Climate Partnership **Comprehensive Climate Action Plan**

5/14/26



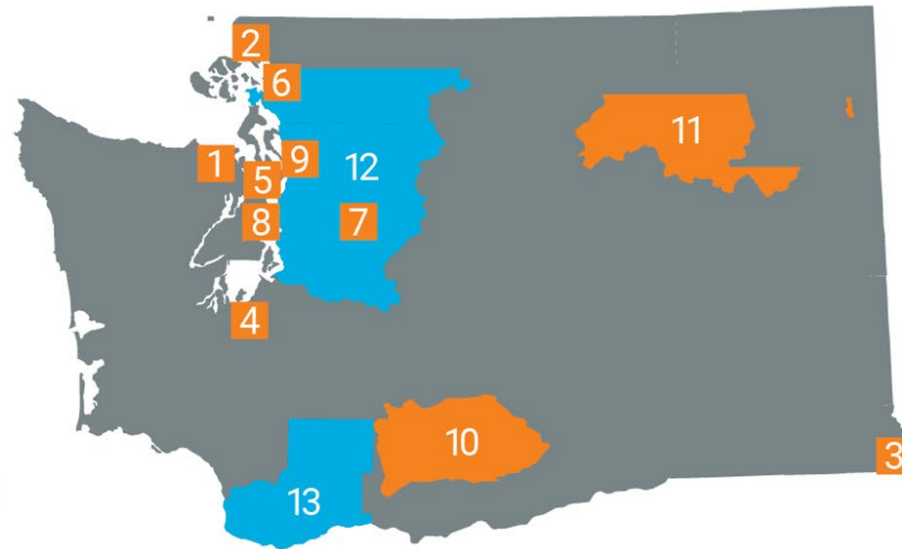
CLIMATE
POLLUTION
REDUCTION
GRANTS

Washington State Department of Commerce and the Washington Department of Ecology received financial support from the EPA under an Assistance Agreement.



Climate Pollution Reduction Grant (CPRG)

EPA’s Climate Pollution Reduction Grants (CPRG) provide funding to states, tribes, local governments and territories to **develop and implement** plans for reducing greenhouse gas emissions



Tribes & Tribal Consortiums:

- 1 Jamestown S’Klallam Tribe
- 2 Lummi Nation
- 3 Nez Perce Tribe
- 4 Nisqually Tribe
- 5 Port Gamble S’Klallam Tribe
- 6 Samish Indian Nation
- 7 Snoqualmie Tribe
- 8 The Suquamish Tribe of the Port Madison Reservation
- 9 Tulalip Tribe

Metropolitan Statistical Areas:

- 10 Yakama Nation
- * Affiliated Tribes of Northwest Indians (ATNI)
- 11 Upper Columbia United Tribes
- 12 Seattle-Tacoma-Bellevue MSA
- 13 Portland-Vancouver Metro Area MSA State of WA



Comprehensive Climate Action Plan

Overview



What is the CCAP?

- **Purpose:** Comprehensive assessment of WA's climate landscape
 - Achieve state greenhouse gas reduction limits
 - Provide direct benefits to communities, businesses and individuals
- **Goal:** Strategic planning
 - Incorporate existing state policies and frameworks
 - Prioritize future policies and investments
 - Create an "evergreen" plan that can be used for years to come



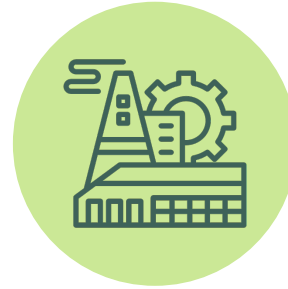
Capturing the whole WA economy



Electric power



Transportation



Industry



Buildings



Agriculture



Natural and
working lands



Waste and
materials



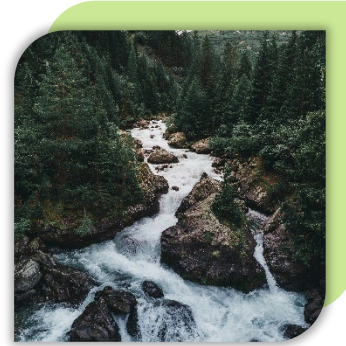
More than greenhouse gas reductions: community benefits



Co-pollutant
reductions



Improved public
health



Improved water
and soil quality



Climate resilience



Community
services



Reduced energy
costs

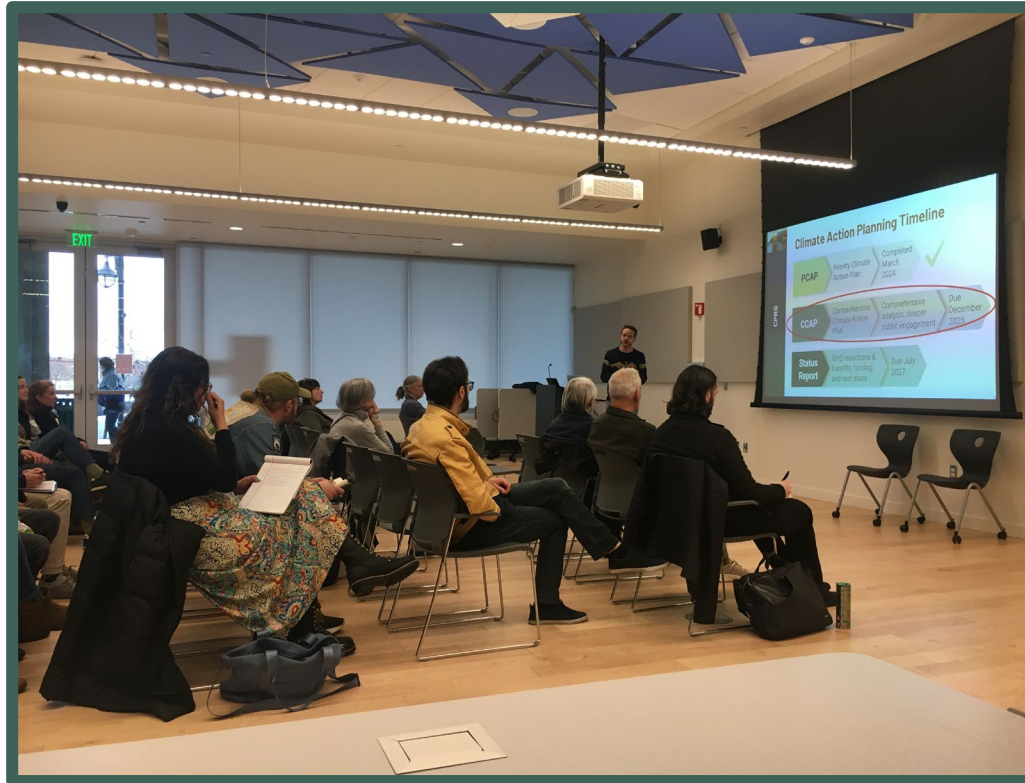


Economic
development



CCAP engagement: Spokane

CCAP



CCAP engagement event at Spokane Public Library on April 2, 2025

Key issues:

- **Concerns around climate risks**
 - Heat events
 - Snowpack and variability in precipitation
- Spokane is an innovator on climate policies
- Big focus on environmental justice and protecting vulnerable populations
- Wildfires and air quality a big concern
- EVs a common topic
 - More incentives
 - Increased charging infrastructure

CCAP contents

- Introduction
 - *Key priorities and recommendations for decision makers
- Where we are now: the Washington climate context
- Greenhouse gas emission projections
- **Greenhouse gas reduction plan**
 - Organized by sector
- Benefits analysis
- Workforce planning analysis
- Next steps

Key CCAP takeaways



- Washington has led on climate action and should continue to build on that progress.
- Climate actions directly benefit communities.
- Equitable public investments are essential.
- Expanding clean energy and improving efficiency remain affordable and effective climate strategies.

Key CCAP takeaways

- Workforce development goes hand-in-hand with climate action.
- Climate action is not one-size-fits-all for Washington communities.
- Washington should continue to be a climate leader.



Key CCAP recommendations

CCAP



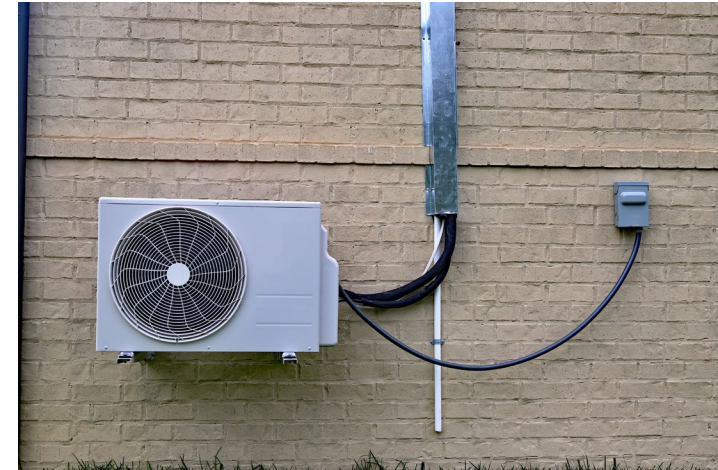
135 greenhouse gas reduction measures



33 priority measures



7 key cross-sector recommendations



Key CCAP recommendations

- Build out transmission and clean energy resources
- Meet growing energy needs through a combination of electrification and clean fuels
- Maximize conservation of electricity, materials, and other resources to save money and reduce emissions
- Advance carbon dioxide removal through natural and technological solutions



Key CCAP recommendations

- Use existing authority and fill gaps in regulatory environment for emissions reductions
- Support climate action from other governments and the private sector
- Build processes for continued climate planning and improved data analysis



Example measure: Reduce driving through land-use planning

- **Sector:** Transportation
- **Strategy:** Increase transportation system efficiency and travel options
- **Greenhouse gas reductions:** Reduce fossil fuel combustion from vehicles
- **Additional benefits:**
 - Reduced air pollution
 - Improved public health
 - Cost savings
 - Improved public services and spaces



Example measure: Energy efficiency retrofits to low-income multifamily housing

- **Sector:** Buildings
- **Strategy:** Increase energy efficiency in residential and commercial buildings
- **Greenhouse gas reductions:** Reduces energy use in multifamily units
- **Additional benefits:**
 - Reduced energy costs
 - Improved health conditions
 - Improved air quality
 - Promotes equity





Supporting materials


Sector-specific focus sheets

FOCUS ON: TRANSPORTATION

Washington State Comprehensive Climate Action Plan

Context

Transportation is Washington’s single greatest source of emissions, [accounting for about 40% of the state’s total greenhouse gas emissions](#). Transportation is also a major source of air pollutants that disproportionately impact the health of people – typically vulnerable populations – living near roadways, port facilities, rail lines and other transit or freight corridors. Therefore, taking action to reduce transportation-related emissions directly improves the health of both our communities and our environment.



Washington has made important progress to reduce transportation emissions, with electric vehicles adoption among the highest in the nation and the [Move Ahead Washington](#) package creating more mobility options for Washington families. However, to meet the 2050 climate mandate—the state’s goal to cut greenhouse gas emissions to [95% below 1990 levels by 2050](#)—the state must continue to build on and create policies that support a cleaner transportation sector.

Climate action overview

Decarbonizing the transportation sector depends on electrifying vehicles and reducing overall traffic on our roads. However, to reach Washington’s climate goals and provide meaningful, equitable benefits to communities statewide, we must take a holistic approach involving land-use, modes of transportation and environmental justice. For this reason, the strategies proposed for this sector focus on:

- Transitioning as many vehicles as possible to electric and zero-emission
- Deploying low carbon or renewable fuels for vehicles that cannot be electrified
- Improving vehicle efficiency
- Reducing vehicle miles traveled

CCAP measure navigator (coming soon!)

Washington State CCAP: Greenhouse Gas Reduction Measure Navigator

This dashboard is a companion to the Washington State Comprehensive Climate Action Plan (CCAP). Greenhouse gas reduction measures are policies, programs, or projects that reduce greenhouse gas emissions and/or enhances carbon sinks in Washington. You can use this dashboard to sort measures by different criteria such as economic sector, status, and added benefits. Click on any policy record to expand its details. Each record also references the corresponding page number in the CCAP to see more details about the measure.

Note: This dashboard represents the contents of the CCAP, which is a snapshot in time (approximately December 2025). This dashboard may be updated in the future. If you have questions or feedback about this dashboard, contact rylie.elison@ecy.wa.gov.

See the [Washington Climate Partnership website](#) for more information.

Sectors ▾
Measure categories ▾
Measure type ▾
Added benefits ▾
Implementing entities ▾

Total greenhouse gas reduction measures

135

Measures in progress

Classified as "existing" (keep as-is) or "enhanced" (existing, but could be enhanced)

90

Newly proposed measures

45

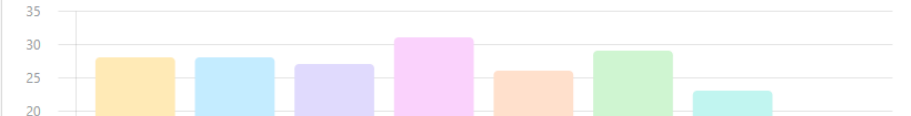
Priority measures

Measures identified as priority for near-term action

33

Sector

Sectors are the various parts of the economy that generate greenhouse gas emissions. Some measures fit into more than one sector, or are economy-wide.



Next steps

- Share with legislators and other decision-makers
- Share the CCAP with communities
 - Community roundtables
- [Next quarterly meeting July 27th](#) on emissions modeling
- Next CPRG grant deliverable: 2027 Status Update
 - Update on progress
 - Explore emerging issues and solutions
 - Identify resources and future needs



Provide your input follow-up survey



An aerial photograph of a vast, dense forest covering a valley and surrounding hills. The trees are a mix of evergreen and deciduous species, creating a rich green texture. In the center of the image, there is a white rectangular box with a thin green border. Inside this box, the word "Questions?" is written in a bold, dark green, sans-serif font.

Questions?

Thank you!

Rylie Ellison

Climate Action Planning Lead
Rylie.Ellison@ecy.wa.gov



Washington State
Department of
Commerce



DEPARTMENT OF
ECOLOGY
State of Washington

[Commerce CPRG Website](#)

[Department of Ecology Website](#)

[Washington Climate Partnership](#)