

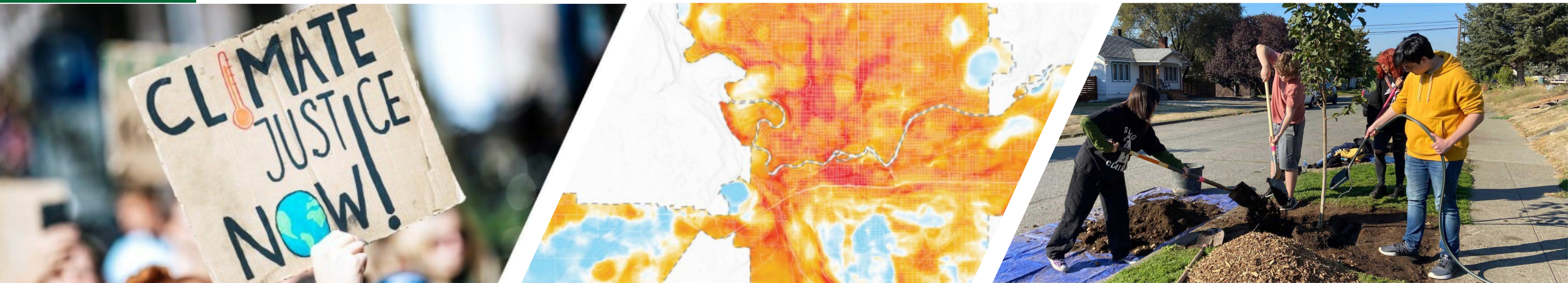


# Climate Planning

Meeting: Climate Resilience & Sustainability Board  
Date: January 8, 2026

PLAN **SPOKANE**  
Resilient | Connected | Livable | 2046

FUNDED BY WASHINGTON'S  
**CLIMATE  
COMMITMENT  
ACT**





# Topics

- **Introductions & Updates** (5 minutes)
- **Draft Policies** (40 minutes)
  - Updates since December meeting
- **Preparing for Joint Meeting with Plan Commission on 1/28** (15 minutes)



*The WA Department of Commerce climate planning grant is supported with funding from Washington's Climate Commitment Act. The CCA supports Washington's climate action efforts by putting cap-and-invest dollars to work reducing climate pollution, creating jobs, and improving public health. Information about the CCA is available at [www.climate.wa.gov](http://www.climate.wa.gov).*

# Climate Planning Team

- **City of Spokane**

- Maren Murphy, Planning
- Tirrell Black, Planning
- KayCee Downey, Planning
- Logan Callen, ICM

- **Consultant Team**

- Lisa Grueter, BERK
- Juan Haeckermann-Godoy, BERK

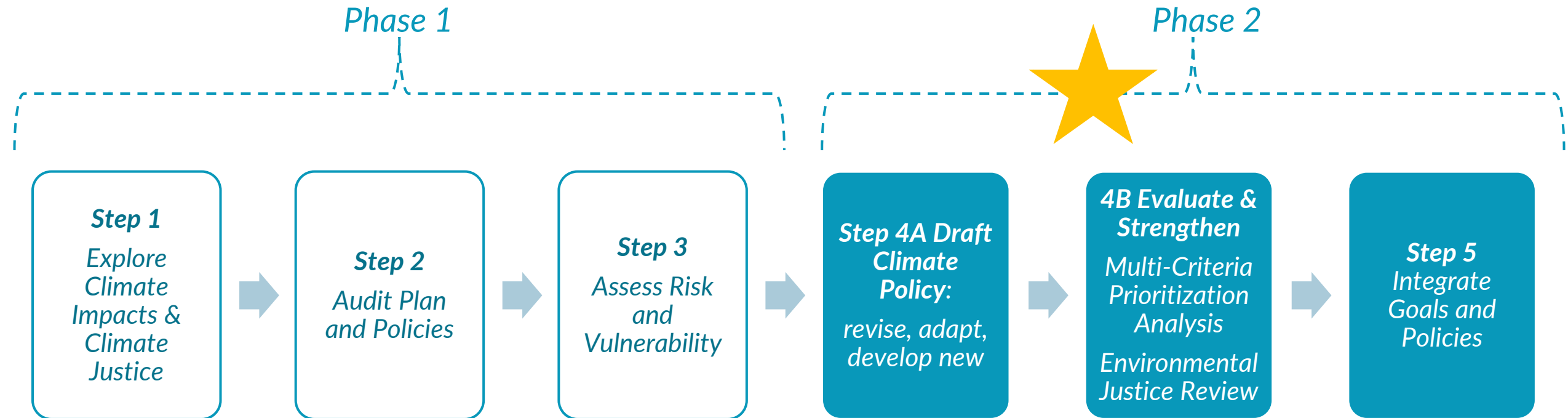
- **+ City of Spokane**

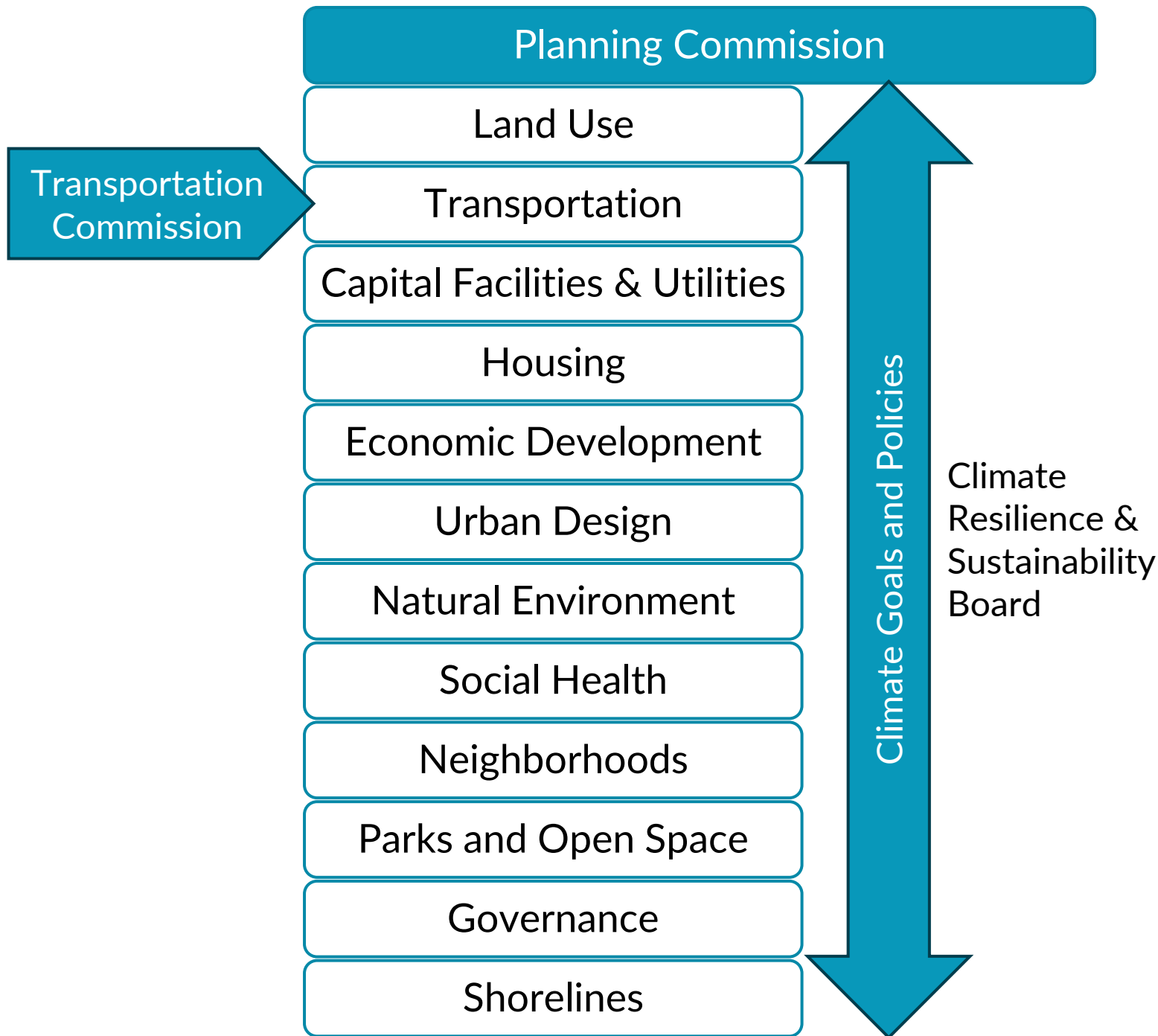
- Colin Quinn-Hurst
- Tyler Kimbrell

- **+ Consulting Partners**

- KAI: Tribal Engagement
- Fehr & Peers:  
Transportation Policy

## Steps to Integrate Climate into Comprehensive Plan





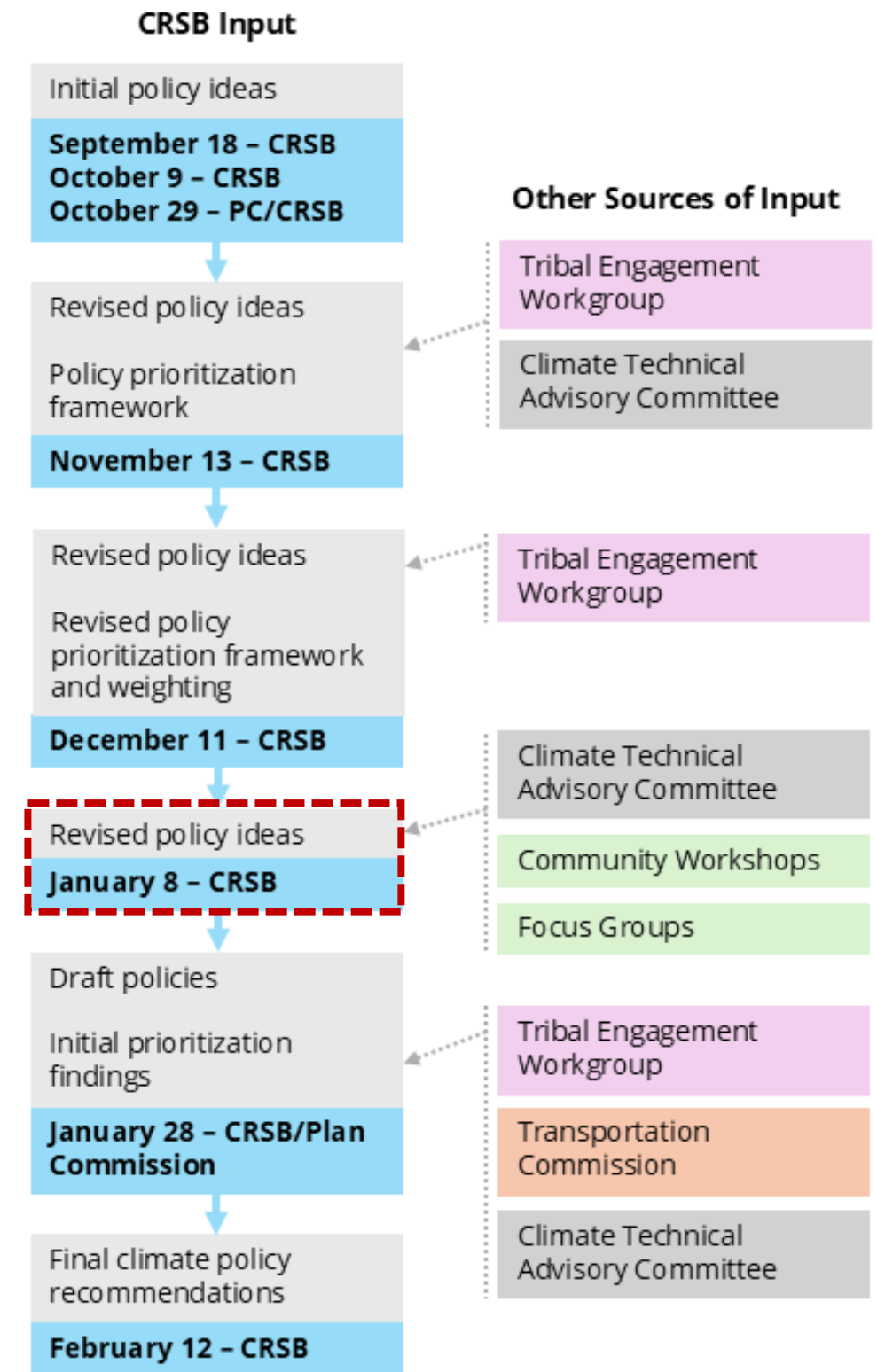
*Climate affects all aspects of planning and **needs an integrative approach.***

#### ROLES

- Plan Commission – lead Comprehensive Plan
- Transportation Commission – lead Transportation Element
- CRSB – lead Climate integration

# CRSB Meeting Topics and Engagement Inputs

- January:
  - Address December policy ideas & fold in engagement results
  - Conduct evaluation
    - Policy ideas/language would be adjusted



# Focus Groups: Key Understandings

- Highlighted that residents understand climate change through **lived experience and practical realities**.
- Participants described climate impacts as **already shaping daily decisions** and compounding existing challenges, particularly for people with fewer resources or less flexibility.
- Broad **support for climate action** and appreciation for the City's efforts to engage community members in this work.
- Discussions surfaced concerns about how policies play out over time—especially when **responsibility, maintenance, or long-term** support are unclear.
- Engagement is most meaningful when it is **useful, respectful, and sustained**.

## Focus groups:

- Youth
- Climate Justice
- Food Security
- Under-Resourced Communities

# Focus Groups: Cross-Cutting Themes

- Climate is experienced as **daily wellbeing**, not an abstract issue.
- Well-intended policies can create new burdens **without lifecycle planning**.
- Climate impacts **compound existing inequities**.
- Access to climate programs and information depends on **awareness, trust, and communication** channels.
- Ongoing engagement is viewed as part of **climate justice**.
- What makes a climate policy effective is **clarity, accountability, and follow-through**.

## Considerations:

- Policies should consider full lifecycle responsibility and long-term follow-through
- Clear, action-oriented language
- Improve public awareness of programs
- Use trusted, accessible communication methods
- Build feedback loops that show how community input is used and inform future decisions



# Policies

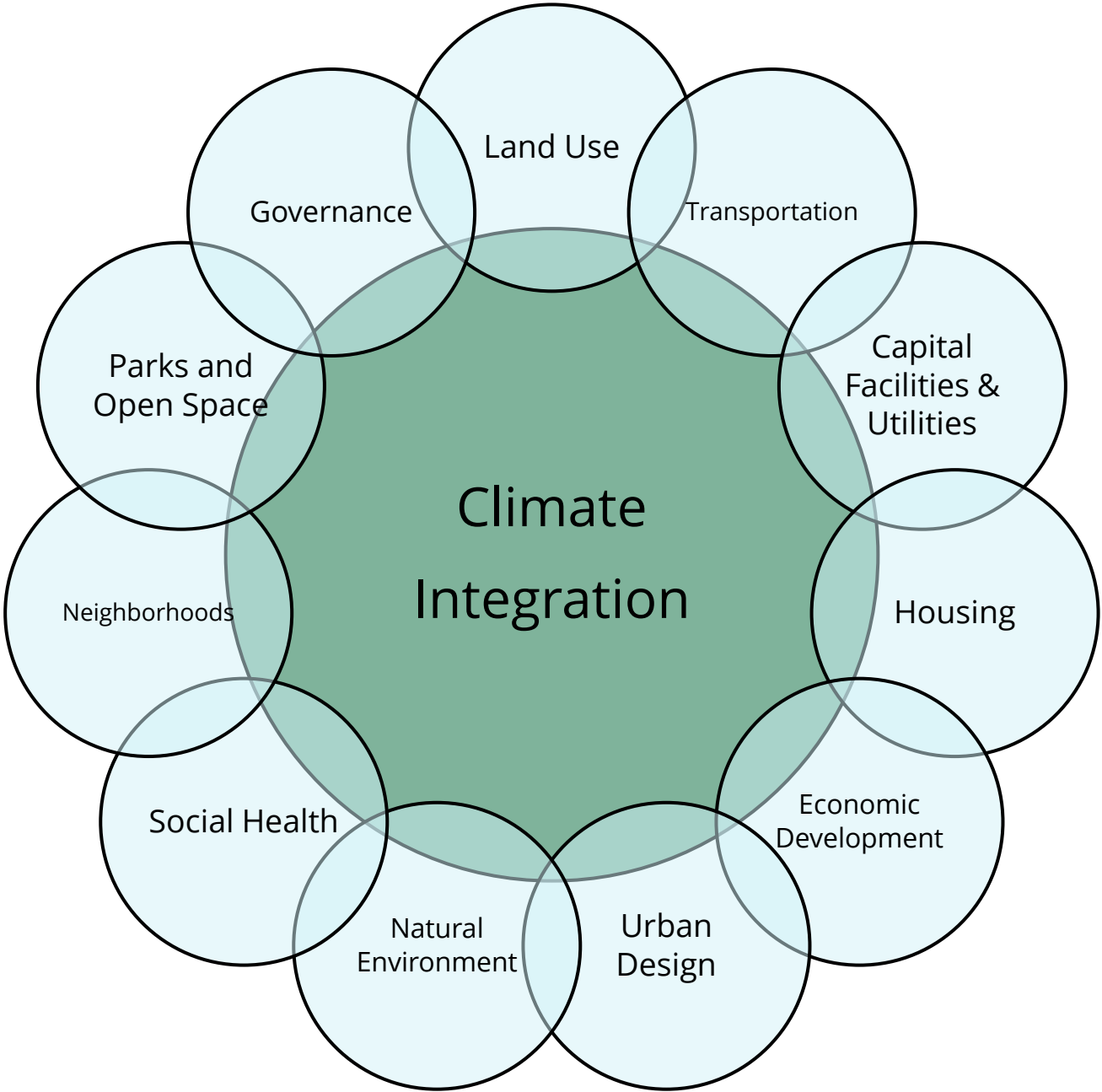
## Discussion Questions:

1. What resonates?
2. What would you change or add?
3. Did we accurately incorporate your feedback?

# Policy Topics

Once refined, recommended climate policies will be incorporated across Comprehensive Plan Chapters which may differ from the sector names

Topic	Memo Page
Agriculture & Food Systems	5
Buildings & Energy	8
Cultural & Historic Resources	11
Economic Development	14
Ecosystems	16
Emergency Management	20
Health & Well-being	24
Land Use/Zoning	27
Transportation	32
Waste Management	38
Water Resources	41



# Themes from Advisory Groups

## Transportation Commission:

- VMT reduction policy recommendations

## Tribal Engagement Work Group:

- Agriculture & Food Systems, Cultural, Health, Emergency Management policies
- Ensure feasibility, make progress

# Themes from Focus Groups



## Youth

Tree canopy

Park maintenance & programming



## Climate Justice

Buildings & Energy: air quality

Ecosystems: tree maintenance, education

Emergency Management: accessible notifications, CBO partners, utility costs

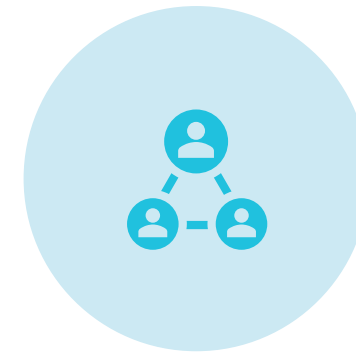


## Food Security

Agriculture & Food Systems

Fill gaps, promote access to fresh local foods, educational resources, partnerships

Specifically requested community gardens on City property



## Under-Resourced Communities

*Similar to Climate Justice*

Utility costs

Human health and safety

Access to information, education



# CRSB Policy Ideas Added

- Economic Development
  - Add something on green jobs pipeline (see ECON-2)
  - Address circularity of materials (see ECON-1)
- Waste Management
  - Address composting and diversion of waste, including education and outreach (see WM-4)
- Water Resources
  - Address water conservation targets (see WR-4)
  - Need drought resilience strategy (see WR-5)

# Buildings & Energy – New Policies

Policy BE-4 (GHG)	<u>Regularly monitor progress and update interim targets for the City’s net zero greenhouse gas emissions goal as set in municipal code.</u> ★ ✕
Policy BE-5 (Resilience and GHG)	<u>Support the development of green roofs in the downtown business corridor to reduce energy use and improve cooling.</u> ✕
Policy BE-6 (Resilience and GHG)	<u>Support small-scale renewable energy production and storage through code updates and incentives.</u> ✕

◆ Spokane Analysis    ↑ Engagement Theme    ● TEW Input    ✦ Draft Chapter    ✕ CTAC Input    ★ CRSB Idea

# Economic Development – New Policies

Policy ECON-2 (Resilience and GHG)	<del>Work with schools, universities, and local organizations to support and recruit jobs and industries that enhance local resilience and regeneration, such as sustainable construction, alternative energy, and urban forestry, with a focus on building partnerships to train and hire from overburdened communities.</del> <u>Encourage, with colleges and other agencies, the development of an environmentally focused jobs pipeline that benefits frontline communities.</u> ♦★[R.04]
Policy ECON- 5 (Resilience and GHG)	<u>Support the modernization and competitiveness of commercial buildings in underserved areas.</u> ✕

♦ Spokane Analysis    ↑ Engagement Theme    ● TEW Input    ❖ Draft Chapter    ✕ CTAC Input    ★ CRSB Idea

# Ecosystems – New Policies

Policy ECOS-1-1	<u>Establish programs and pursue funding to support long-term tree health through tree maintenance and protection while ensuring that households with fewer resources are not burdened by canopy expansion efforts.</u> ↑*
Policy ECOS-1-2	<u>Raise awareness of the City’s tree planting and urban canopy programs and incentivize participation on private property, especially in areas with high heat risk.</u> ↑
Policy ECOS-1-4	<u>Support educational and volunteer opportunities for environmental stewardship on City-owned property.</u> ↑
Policy ECOS-1-5	<u>Equitably expand the City’s programming and park maintenance and preservation activities to increase amenities that address comfort such as shade and drinking fountains and improve safety, education, and community resources at parks.</u> ↑

◆ Spokane Analysis ↑ Engagement Theme ● TEW Input ✦ Draft Chapter ✕ CTAC Input ★ CRSB Idea



# Emergency Management – New Policies

Policy EM-2-3

In emergency management planning, recognize Spokane’s role as a service provider and transportation hub in the event of a major disruption at the regional level. ✕

◆ Spokane Analysis    ↑ Engagement Theme    ● TEW Input    ❖ Draft Chapter    ✕ CTAC Input    ★ CRSB Idea

# Land Use

Policy LUZ-1-5 (GHG)	<u>Expand existing parking maximums to new developments citywide, including commercial developments.</u> [AC.01]
-------------------------	--

◆ Spokane Analysis    ↑ Engagement Theme    ● TEW Input    ❖ Draft Chapter    ✕ CTAC Input    ★ CRSB Idea

# Climate-Focused Transportation Policies

- New and updated transportation policies draw from:
  - Vehicles Miles Traveled Memo – *Included in Agenda Packet*
  - Community Feedback
  - Transportation Commission and Plan Commission feedback
  - Climate Resilience and Sustainability Board recommendations

# Transportation – VMT Reduction

- TR-3.1 – Provide Transportation Options for All Users – **Updated**
- TR-3.2 – Upgrade Network to Meet Standards – **Updated**
- TR-3.5 – Active Transportation Project Selection – **Updated**
- TR-4.2 – Access to Transit – **Updated**
- TR-4.3 – Support Public Transit Expansion – **Updated**
- TR-5.3 – Multi-modal Level of Service Standards – **Updated**
- TR-9.1 – Set and Monitor Near-and Long-Term Targets for Vehicle Miles Traveled (VMT) – **New**
- TR-9.2 – Transportation Demand Management (TDM) – **Updated**
- TR-9.3 – Target Transportation Demand Management Campaigns – **New**
- TR-9.4 – Transportation Demand Management Requirements – **New**
- TR-9.5 – Parking Management – **Updated**
- TR-9.6 – Parking Pricing and Maximums – **New**
- TR-9.7 – Street Access and Tolling – **New**
- TR-9.8 – Distribution and Delivery – **New**



# Transportation – Climate Change Mitigation and Resiliency

- TR-9.9 – Expand Zero-Emission Vehicle Infrastructure – *New*
- **GOAL TR-10** – Enhancing Resiliency in the Transportation Network - *New*
  - TR-10.1 – Design for Hydrologic Impacts - *New*
  - TR-10.2 – Create Climate-Resilient Infrastructure - *New*
  - TR-10.3 – Connect Evacuation Routes – *New*
  - TR-10.4 – Provide Shade and Natural Tree Cover - *New*

# Transportation – New Policies

Policy Trans-1-4 (GHG)	<u>Maintain bicycle and pedestrian connectivity during construction of development or projects that block the right of way.</u> ♦
Policy Trans-1-5 (GHG)	<u>Improve active transportation and other multimodal types of transportation options in concurrency programs – both in assessment and mitigation.</u> ♦
Policy Trans-1-6 (GHG)	<u>Encourage walking and biking to reduce VMT and GHG emissions by providing safe and maintained sidewalks and trails, and low traffic stress bicycle facilities.</u> ↑

♦ Spokane Analysis   ↑ Engagement Theme   ● TEW Input   ❖ Draft Chapter   ✕ CTAC Input   ★ CRSB Idea

# Waste Management

Policy WM-5  
(GHG and Resilience)

Support community and neighborhood clean-up events addressing streets, street trees, trails, parks, swales, and more by providing education and resources. ↑

◆ Spokane Analysis ↑ Engagement Theme ● TEW Input ✦ Draft Chapter ✕ CTAC Input ★ CRSB Idea

# Water Resources

Policy WR-4 (Resilience)	<u>Set and regularly monitor progress for short- and long-term targets for water conservation goals set in municipal code.</u> ↑✱★
Policy WR-5 (Resilience)	<u>Develop, implement, and regularly review a comprehensive drought resilience strategy that factors in projected climate impacts and sets action levels for different drought stages in municipal code.</u> ↑✱★
Policy WR-6 (Resilience)	<u>Consider implementing a “One Water” concept that manages all forms of water in the city – rainwater, groundwater, surface water, drinking water, used water – in an integrated fashion to provide a resilient and effective urban water service to the city and water service area customers.</u> ✱
Policy WR-7 (Resilience)	<u>Encourage residents and businesses to manage stormwater on their properties such as through rain gardens, drought tolerant plants, or permeable pavements, to keep stormwater out of streets or rights-of-way.</u> ✱

◆ Spokane Analysis ↑ Engagement Theme ● TEW Input ✧ Draft Chapter ✱ CTAC Input ★ CRSB Idea



# Joint Meeting Discussion

- What policy topics are top of mind to discuss with the Plan Commission?
- What would help the CRSB make recommendations in mid-February?

# Next Steps

# Meeting Schedule

- **CRSB**

- ▣ January 8

- Revised Policy Ideas

- Fold in November /  
December engagement

- ▣ February 12

- Make recommendations

- **Plan Commission & CRSB:**

- Joint Meeting, January 28, 2026

# PlanSpokane 2046 Around Town

Draft EIS  
Lunch & Learn  
January 13, 12pm – 1pm  
Virtual

Details at [planspokane.org](https://planspokane.org)  
*Click on Draft Environmental Impact Statement button*



## LISTENING HOURS

City Planners will be out in the community to answer questions about and discuss the Draft Environmental Impact Statement part of the PlanSpokane 2046 Periodic Update to the Comprehensive Plan. These are drop-in hours with no formal presentations.

- SESSION 1**  **January 20, 11 a.m. to 1 p.m.**  
Spokane City Hall, Tribal Room (Lobby)
- SESSION 2**  **February 3, 4 to 6 p.m.**  
Hillyard Library, Events Room
- SESSION 3**  **February 5, 3 to 6 p.m.**  
Liberty Park Library, Study Room A
- SESSION 4**  **February 10, 4 to 6 p.m.**  
Shadle Park Library, Studio Room
- SESSION 5**  **February 12, 4 to 6 p.m.**  
South Hill Library, Study Room A