



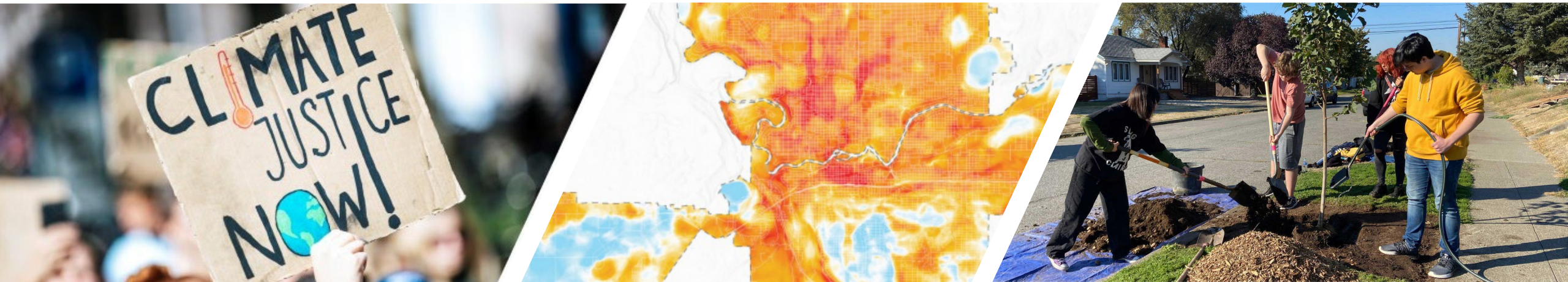
Climate Planning

Climate Resilience & Sustainability Board
Climate Planning Phase 2 Engagement
July 10, 2025

Maren Murphy, AICP | KayCee Downey, AICP

PLAN **SPOKANE**
Resilient | Connected | Livable | 2046

FUNDED BY WASHINGTON'S
**CLIMATE
COMMITMENT
ACT**



Climate Resiliency - Phase 1

Steps to Integrate Climate into Comprehensive Plan

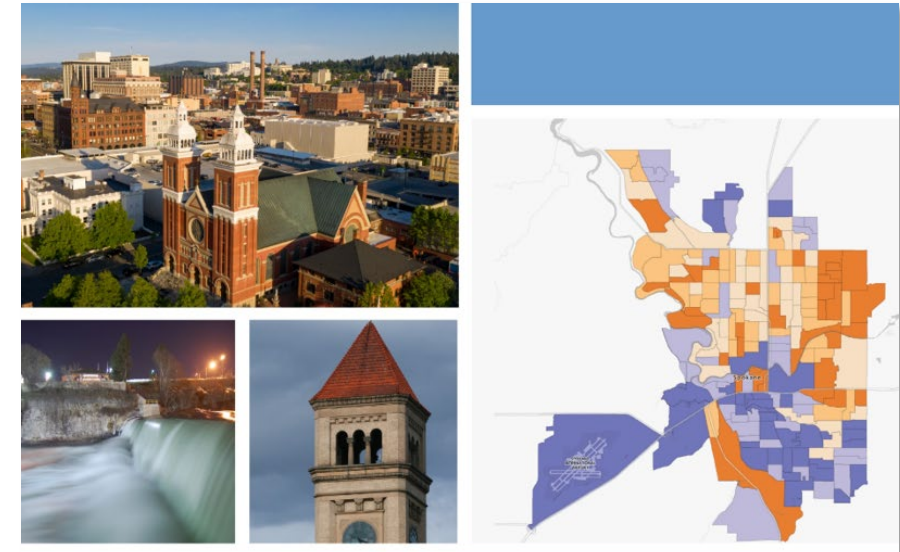
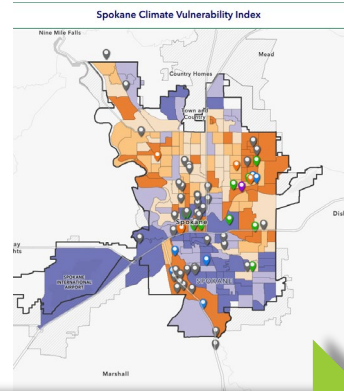
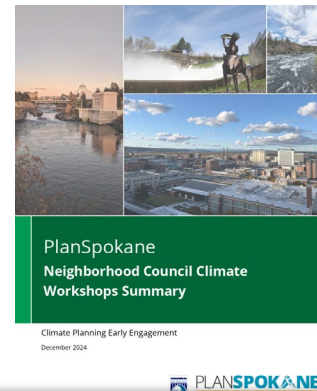
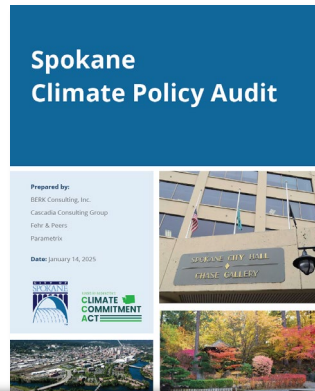
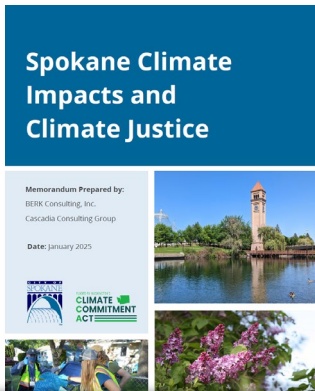


Updated: July 1, 2025

Phase 1 grant completed June 15

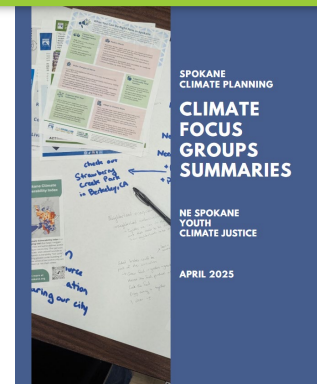
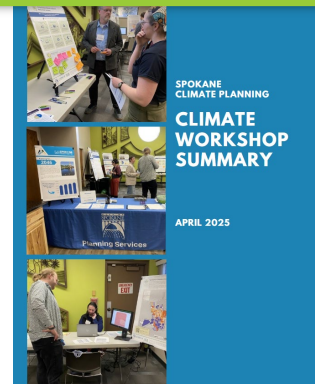
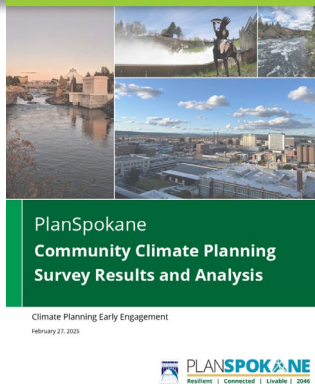
Phase 2 grant processing in progress

Phase 1 Summary



Spokane Climate Risk and Vulnerability Assessment

Final: June, 2025

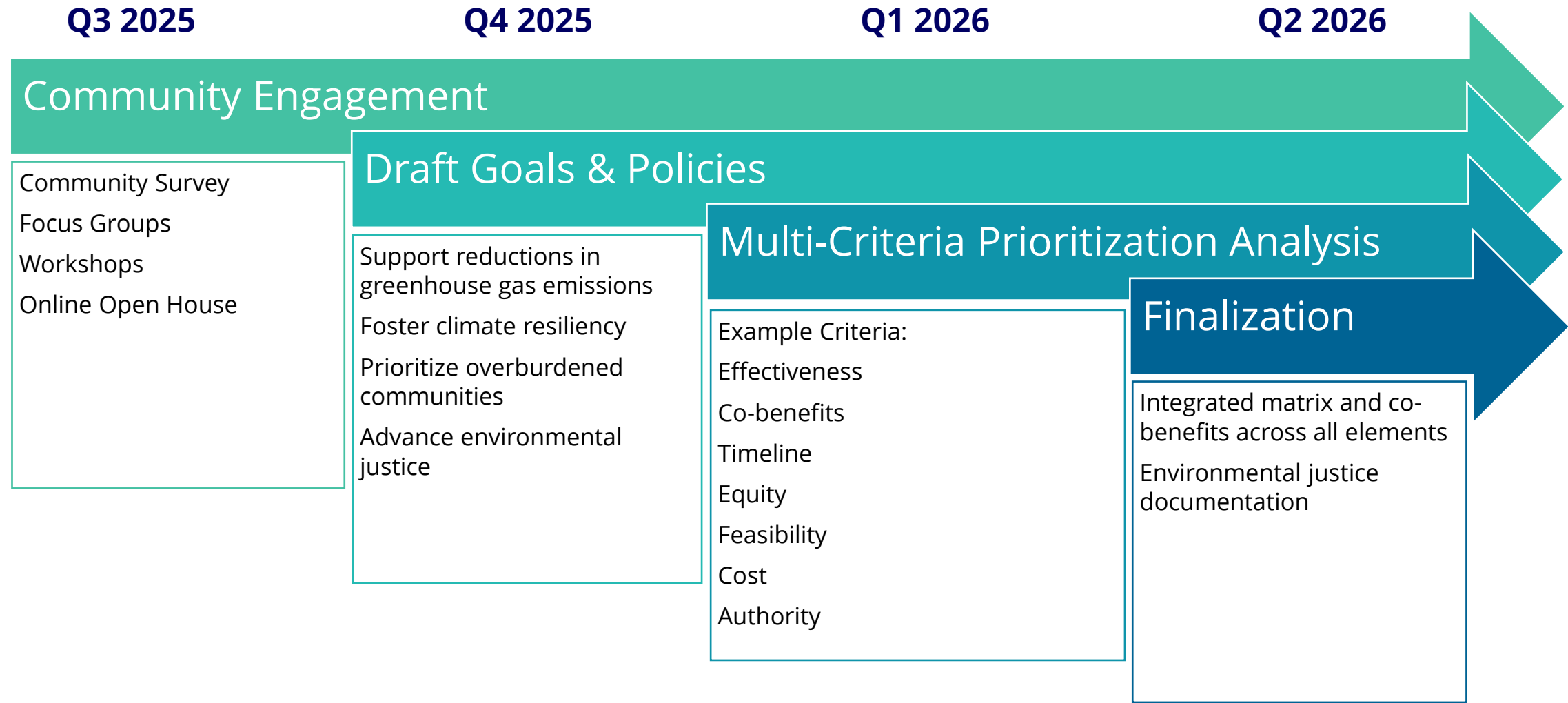


| July 10, 2025

Kick Off: Climate Planning Phase 2



Phase 2: Proposed Timeline



Phase 2: Community Engagement

Goals for Phase 2 Engagement

- **Provide an understanding** of how climate considerations will be integrated into the Comprehensive Plan
Policies → Plans and Programs → Actions and Decisions
- **Report back** how prior engagement has been incorporated
- **Receive input** on types of policies the community wants to see in the City
- **Help refine** ways to prioritize policies for decision-making

Community Climate Policy Survey

- Early policy discussion to support Phase 2
- **July 21-August 31**
- Will be available in English, Spanish, Russian, Vietnamese, Arabic, and Marshallese
- Raffle of 10 \$50 gift cards



Climate Planning Focus Groups

- 4-6 Focus Groups with Facilitator
- Discuss preferred policies and ways to prioritize policy decisions
- Currently scoped:
 - Climate Justice
 - Food Policy
 - Caregivers/Youth (informal/park)
 - Older Populations

REMINDER: Phase 1 Focus Groups

- Climate Justice
- Youth
- Northeast Spokane

Climate Planning Focus Groups

- 4-6 Focus Groups with Facilitator
- Discuss preferred policies and ways to prioritize policy decisions
- Currently scoped:
 - Climate Justice
 - Food Policy
 - Caregivers/Youth (informal/park)
 - Older Populations



Are there other focus groups that should be considered to assist in the development of future policies?

Community Workshop Series

- Combined workshop with ongoing PlanSpokane 2046 Periodic Update to the Comprehensive Plan
 - Beginning to integrate process for the public
- Fall 2025
- 1 drop-in evening workshop in each Council District and 1 drop-in mid-day workshop



Ongoing Engagement

PlanSpokane
Newsletter

Blog Posts

Social Media

Community
Tabling

Community
Presentations

Partnership
Outreach

Other Engagement



**Any other suggestions for
community outreach in
climate and resiliency policy
development?**

Join Us In Community Conversation!

Stay up-to-date and submit comments on the project!



my.spokanecity.org/climateplanning

EngagementHQ webpage



PlanSpokane monthly newsletter



climateplanning@spokanecity.org

