



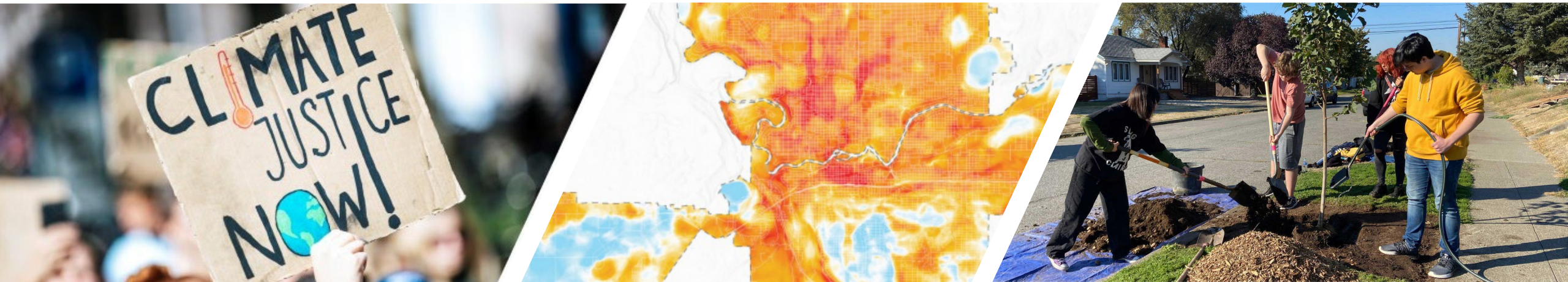
# Climate Planning

CRSB Phase 1 Wrap-up  
June 12, 2025

Maren Murphy, AICP | Logan Callen

PLAN **SPOKANE**  
Resilient | Connected | Livable | 2046

FUNDED BY WASHINGTON'S  
**CLIMATE  
COMMITMENT  
ACT**





# Climate Resiliency - Phase 1 Tasks

Steps and Pathways to Integrate Resilience into Comprehensive Plan



*Phase 1 grant due June 15*

# Climate Planning Phase 1 Wrap-up



# Spokane Climate Impacts and Climate Justice

Memorandum Prepared by:  
BERK Consulting, Inc.  
Cascadia Consulting Group

Date: January 2025



## Climate Impacts and Climate Justice Memo

Extreme weather events and changing climate impacts affect everyone, regardless of age, background, or income. However, those impacts are not distributed evenly. The Spokane Climate Impacts and Climate Justice memo identifies climate trends affecting Spokane, as well as the vulnerable populations and overburdened communities that are impacted first and worst.

Climate Impacts &  
Climate Justice  
Memo



Policy Audit  
Memo



Climate  
Vulnerability  
Index



Climate Risk &  
Vulnerability  
Assessment

# Spokane Climate Policy Audit

**Prepared by:**

BERK Consulting, Inc.  
Cascadia Consulting Group  
Fehr & Peers  
Parametrix

**Date:** January 14, 2025



## Climate Policy Audit

The Spokane Climate Policy Audit analyzes and summarizes existing climate-related plans, policies, and regulations to lay a strong planning foundation to the new climate and resiliency requirements of HB 1181. The audit identifies policies and codes to keep, amend, add, consolidate, or incorporate into the Comprehensive Plan.

Climate Impacts &  
Climate Justice  
Memo



Policy Audit  
Memo

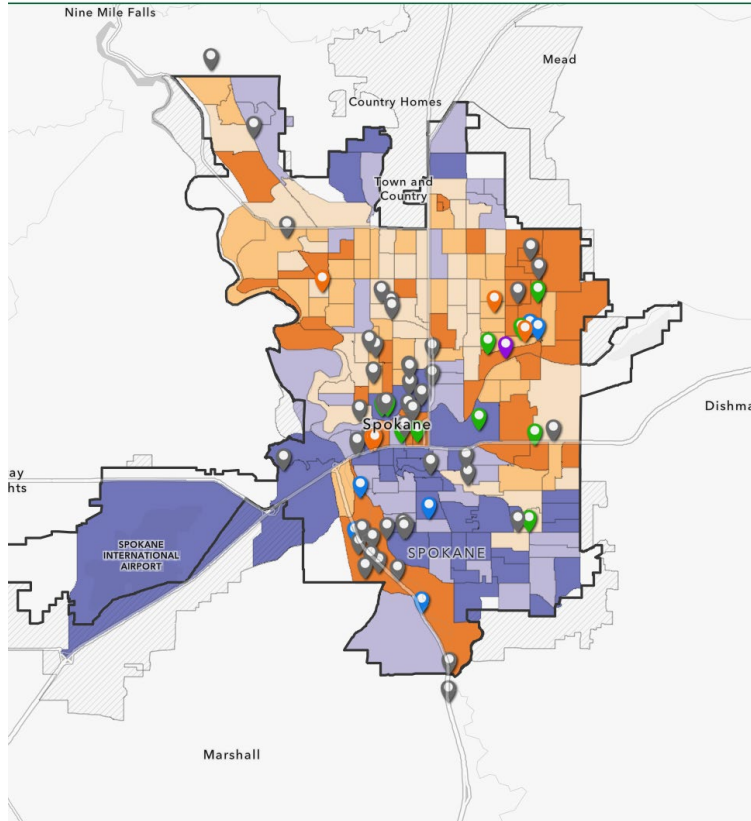


Climate  
Vulnerability  
Index



Climate Risk &  
Vulnerability  
Assessment

Spokane Climate Vulnerability Index



## Climate Vulnerability Index

The mapping tool helps identify areas, people, and infrastructure in Spokane that are more at risk from climate hazards like extreme heat, wildfire risks, and health issues caused by heat and smoke. The Spokane Climate Vulnerability Index uses over 30 indicators to show which areas in Spokane are more or less vulnerable to weather events like extreme heat, wildfire and wildfire smoke, or heavy rainfall.

Climate Impacts &  
Climate Justice  
Memo



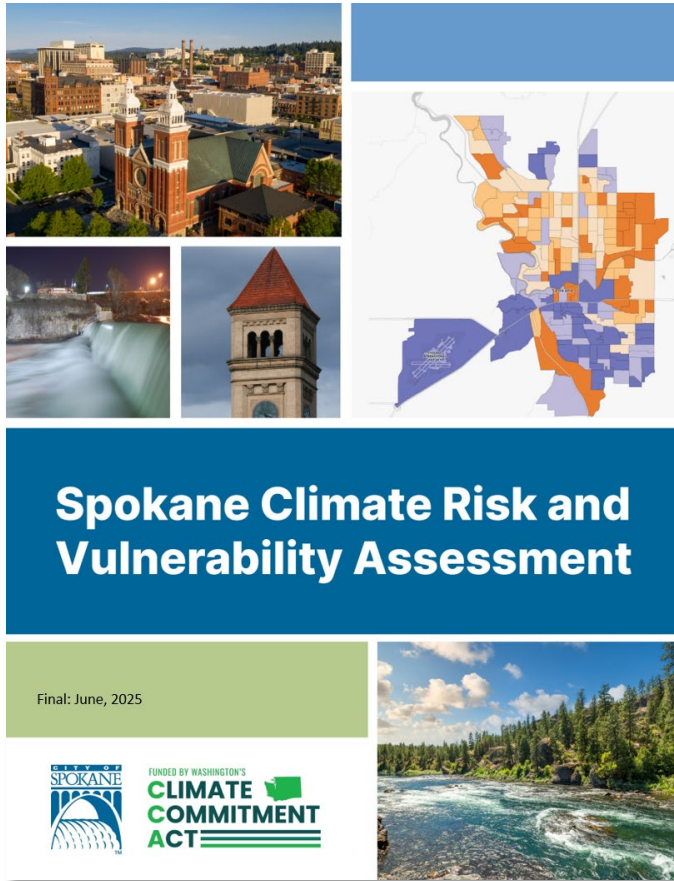
Policy Audit  
Memo



Climate  
Vulnerability  
Index



Climate Risk &  
Vulnerability  
Assessment



## Climate Risk & Vulnerability Assessment

A framework for data analysis to identify the likelihood of future climate hazards and their potential impacts and vulnerabilities for Spokane, including exposure, sensitivity, and adaptive capacity that contribute to overall climate risk.

Climate Impacts &  
Climate Justice  
Memo



Policy Audit  
Memo



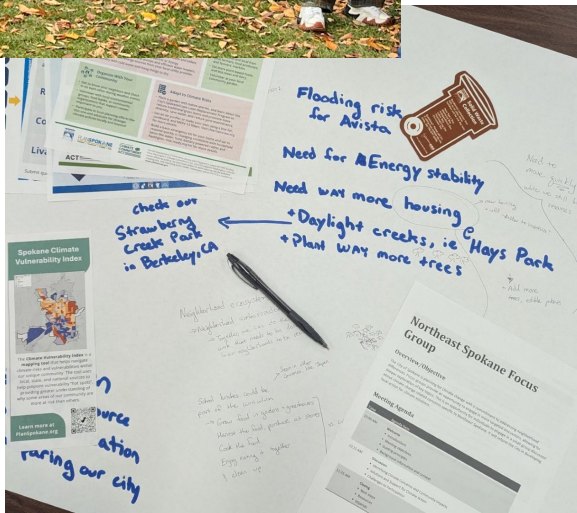
Climate  
Vulnerability  
Index



Climate Risk &  
Vulnerability  
Assessment



# People Centered Approach





# Advisory Groups

## Climate Technical Advisory Group

- May 2024
- September 2024
- January 2025
- March 2025
- May 2025

## CRSB / Climate Policy Advisory Team

- December 2024
- January 2025\*
- February 2025
- March 2025\*
- April 2025
- May 2025\*

\*Technical Workshops

# Tribal Engagement Workgroup

## Key Vulnerabilities

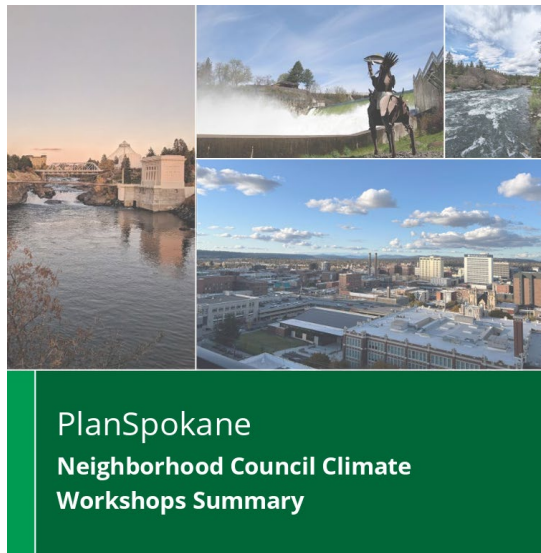
- Loss of cultural access
- Urban Native Invisibility
- Health and Environmental Justice Disparities
- Water Insecurity
- Mental Health and Spiritual Trauma
- Emergency Planning Gaps



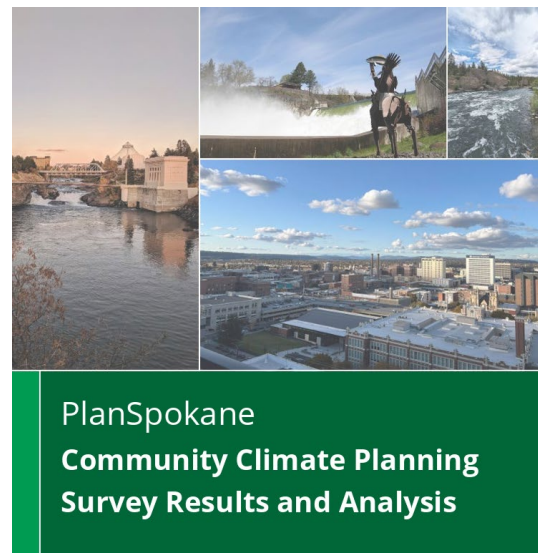
## Tribal Engagement Workgroup Summary

Spokane Climate Planning

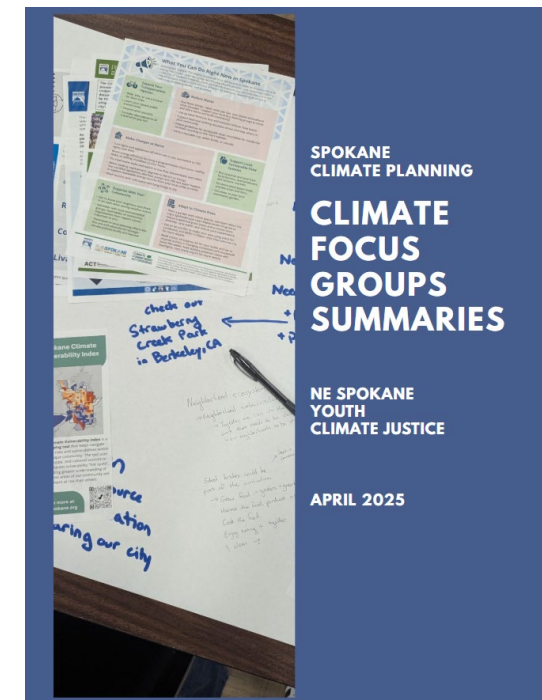
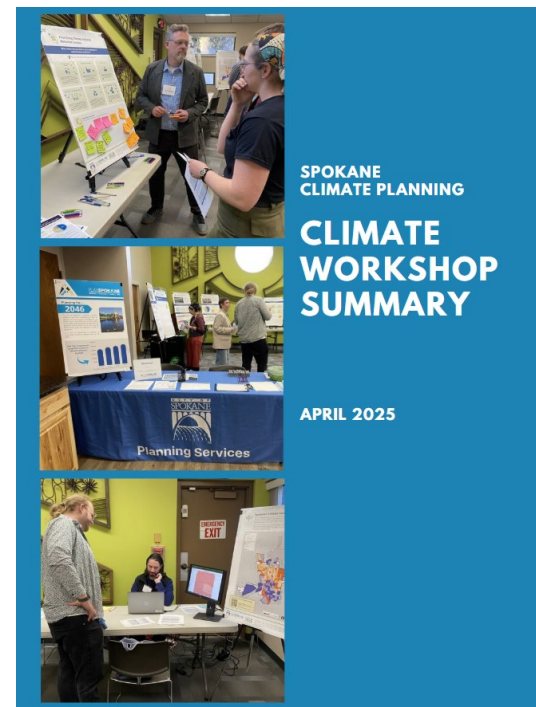
# Community Engagement



Climate Planning Early Engagement  
December 2024



Climate Planning Early Engagement  
February 27, 2025





# Focus Groups Takeaways

*Climate justice means where you grow up, what community you are a part of, does not determine how long you live or access to healthy clean air, water, housing.*

## Youth

- Empowerment through knowledge
- Air quality and wildfire smoke
- Isolation
- Nature access and mental health
- Eco-anxiety
- Climate education
- Large-scale change

## NE Spokane

- Community connection as resiliency
- Air quality, tree canopy and heat
- Financial constraints
- Climate education
- Mutual aid
- Equity and accessibility

## Climate Justice

- Green jobs
- Wildfire and smoke
- Language access and communication needs
- Disaggregate data to identify disparities
- Community trust
- Accountability
- Need for cultural shift and action

# Ongoing Engagement

PlanSpokane  
Newsletter

Blog Posts

Social Media

Community  
Tabling

Community  
Presentations

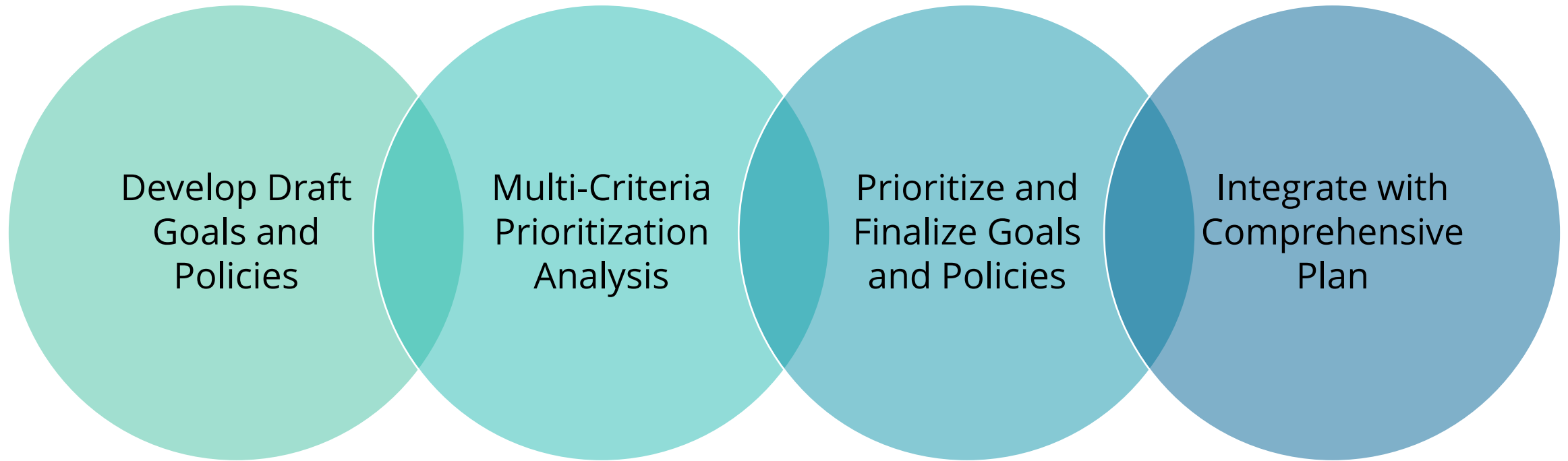
Partnership  
Outreach

# Next Steps: Climate Planning Phase 2

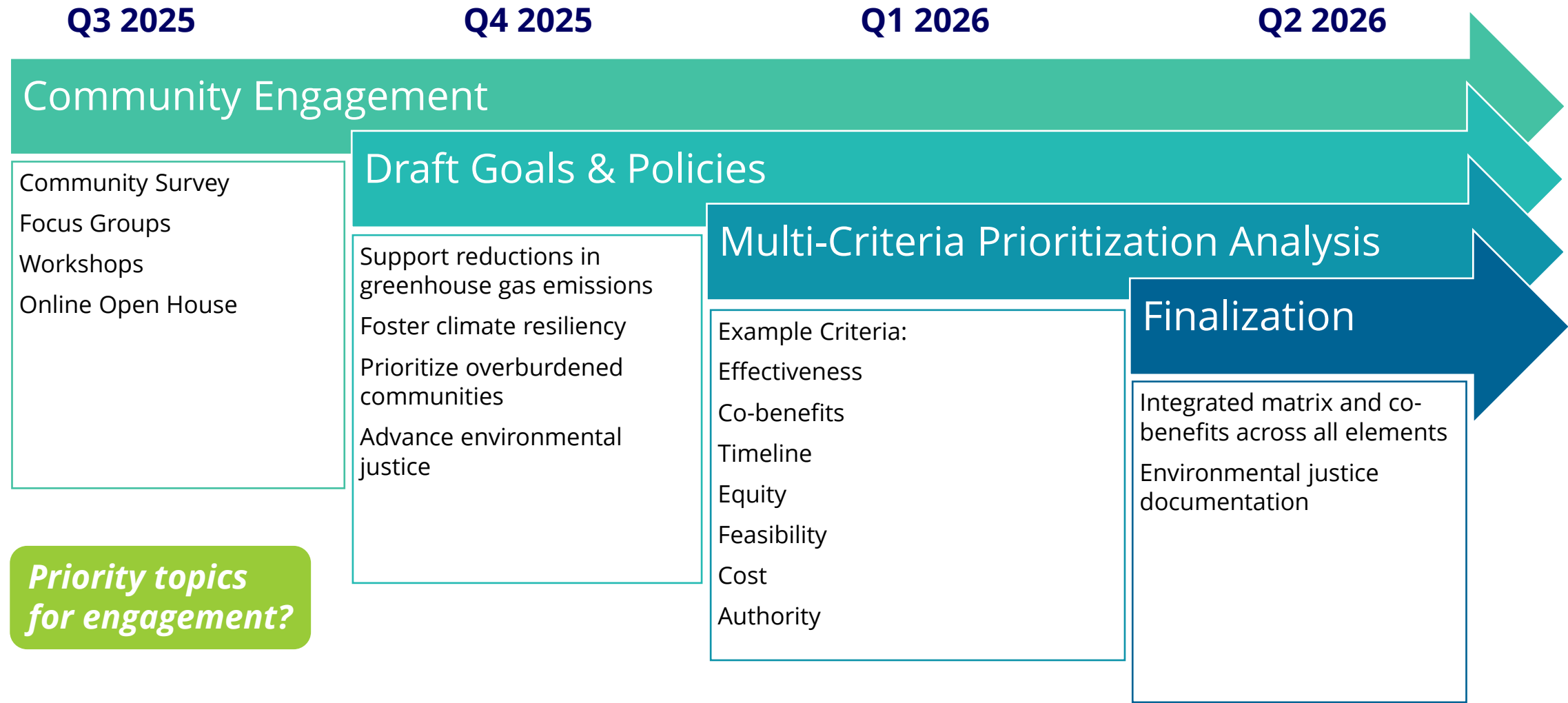




# Phase 2: Major Outcomes



# Phase 2: Proposed Timeline



# Join Us In Community Conversation!

Stay up-to-date and submit comments on the project!



<https://my.spokanecity.org/climateplanning>

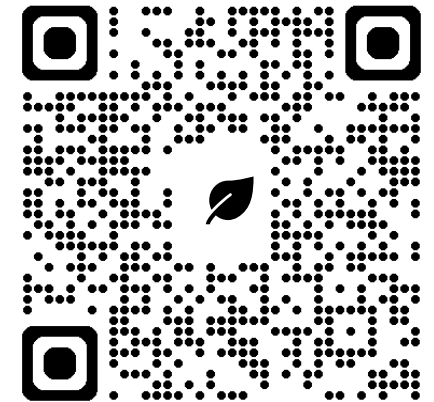
EngagementHQ webpage



PlanSpokane monthly newsletter



[climateplanning@spokanecity.org](mailto:climateplanning@spokanecity.org)





# PLANSPOKANE

Resilient | Connected | Livable | 2046