



Institute *for* Climate, Water, *and the* Environment

gonzaga.edu/ClimateInstitute
ClimateInstitute@gonzaga.edu



Our Mission

Informed by an abiding commitment to a just society and care for the planet, the Gonzaga Institute for Climate, Water, and the Environment engages in regional capacity building, scholarship, and teaching to promote the flourishing of inland northwest communities, waters, and lands in the face of a changing climate.



**Institute
for Climate,
Water, *and the*
Environment**

Dante Jester (they/them/ella)

- Birthplace: Wenatchee Valley
- Homeplace: Spokane
- BA in Peace Studies
- MSc Climate Change and Development
- Farmer by birth
- Returned Peace Corps Volunteer
- Climate Resilience Program Manager



Mary Condon (she/her/hers)

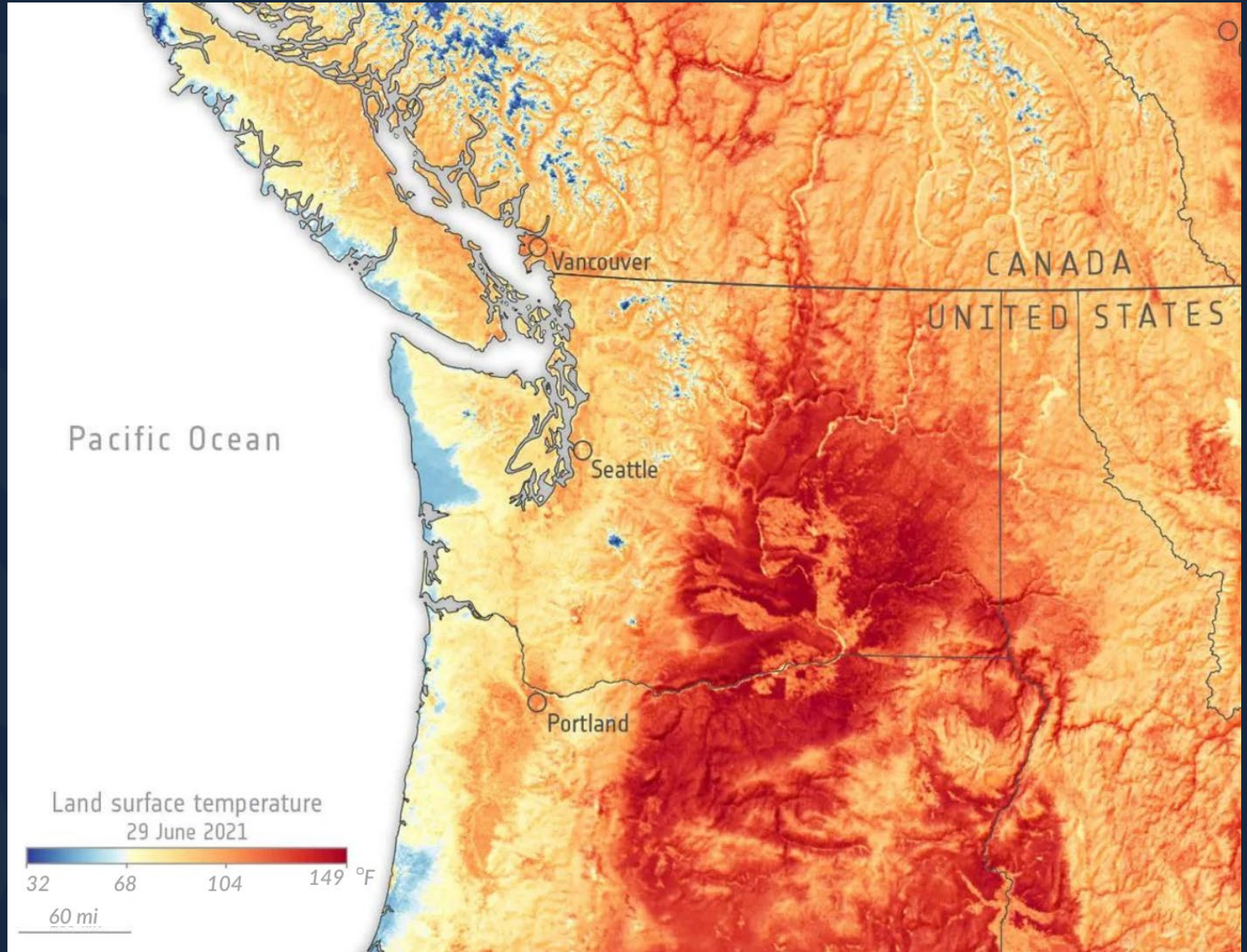
- Birthplace: Spokane, WA
- BA Philosophy, BA Spanish, BS Psychology (UI)
- MA International Affairs (JHU)
- Former Division I athlete
- Returned Peace Corps Volunteer
- Climate Resilience Program Coordinator



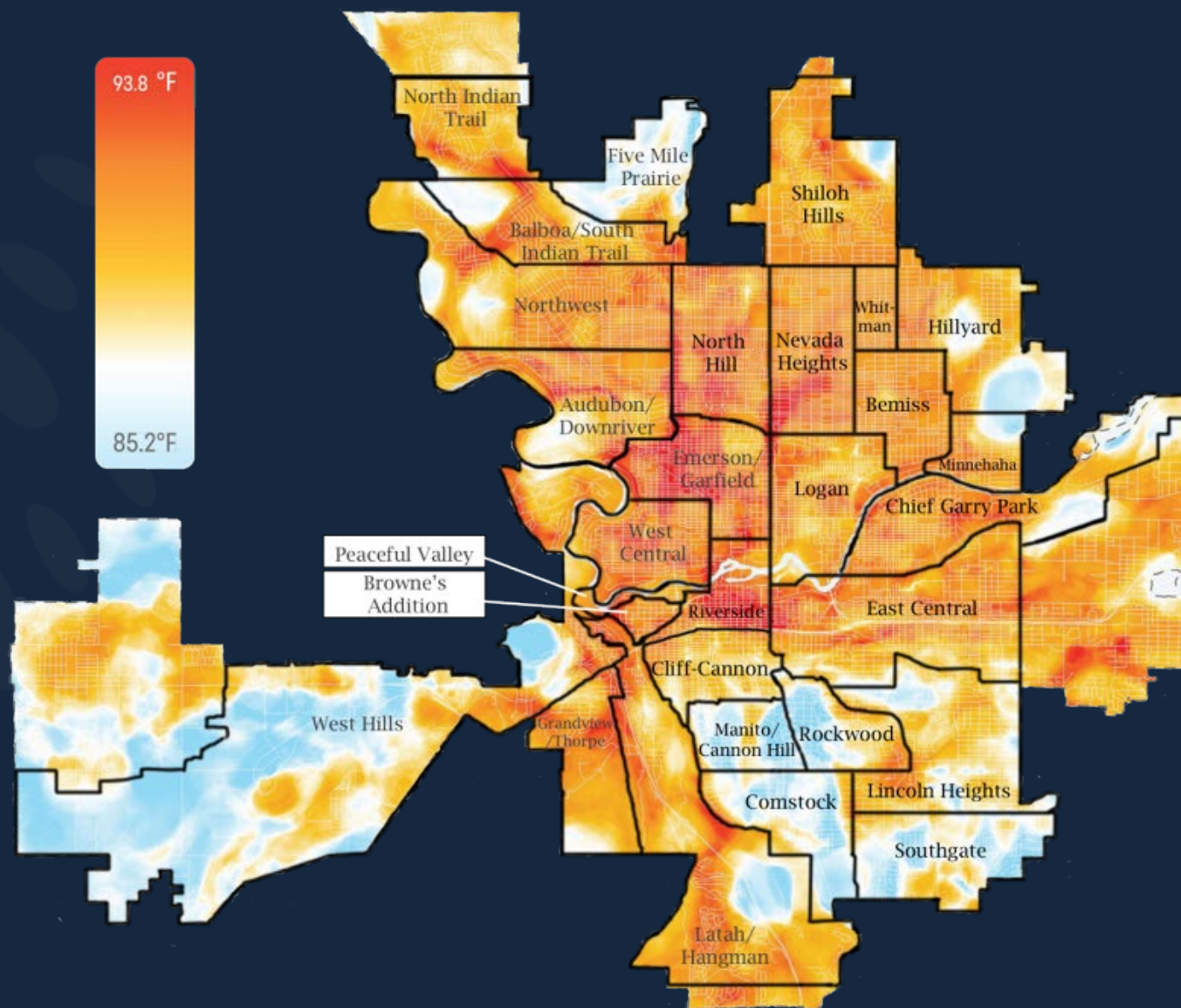
The Catalyzing Event: 2021 Northwest Heat Dome

157 heat-related
deaths in WA

19 heat-related
deaths in Spokane
County

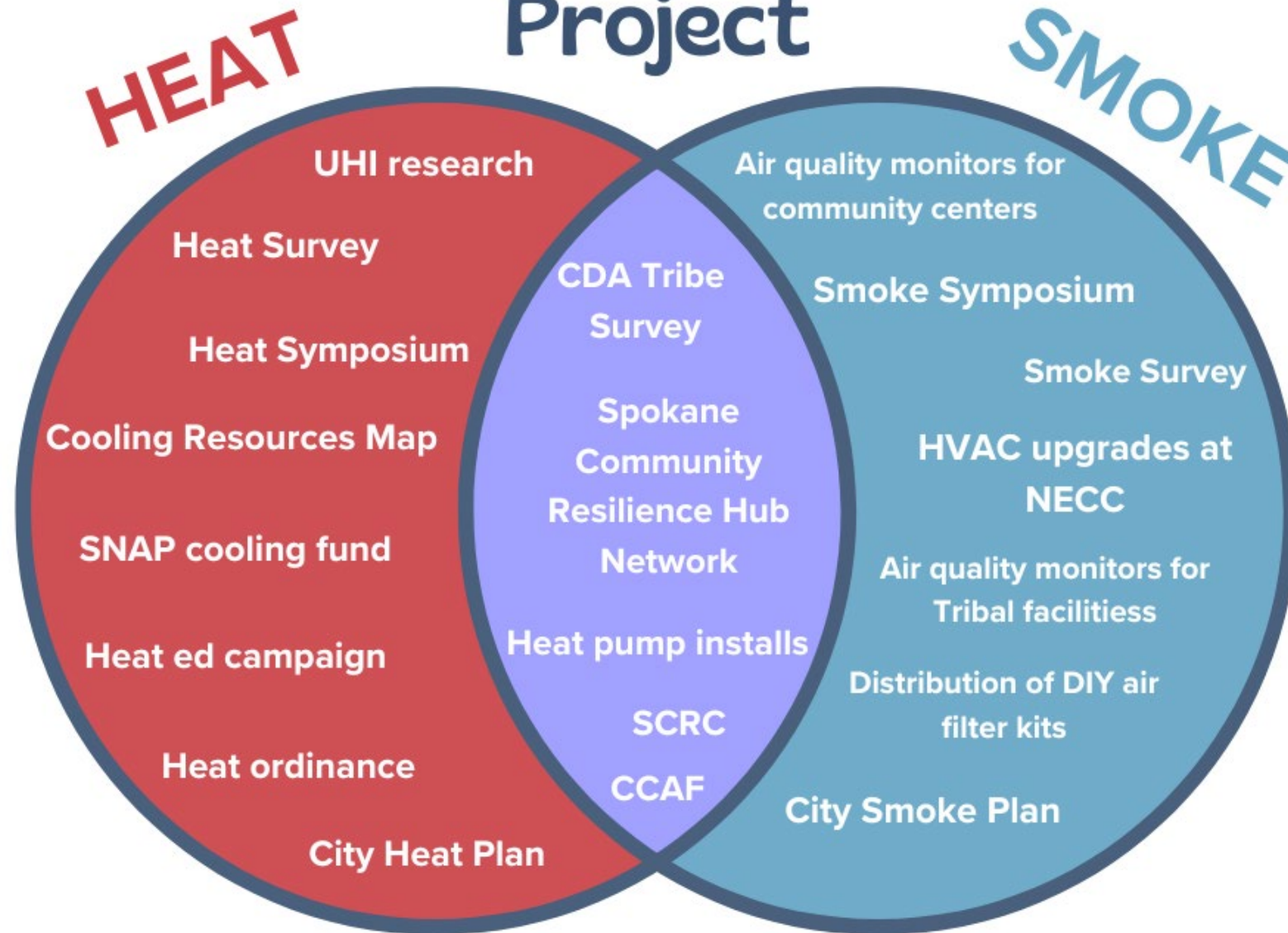


Afternoon Temperatures in Spokane from 3 - 4 PM



Climate Resilience

Project



Spokane Community Resilience Collaborative

- Founded in April 2024
- 15 member organizations
- **Goal 1:** Develop city-wide extreme heat and wildfire smoke plans for Spokane
- **Goal 2:** Develop a building-level tool Spokane organizations can use to develop their own smoke and heat plans
- **Goal 3:** Create a summer resource guide for Spokane residents



Institute for Climate,
Water, and the Environment





Extreme Heat and Wildfire Smoke: Listening to Our Community

Have you ever experienced any of the following health conditions due to heat? (n=1327)

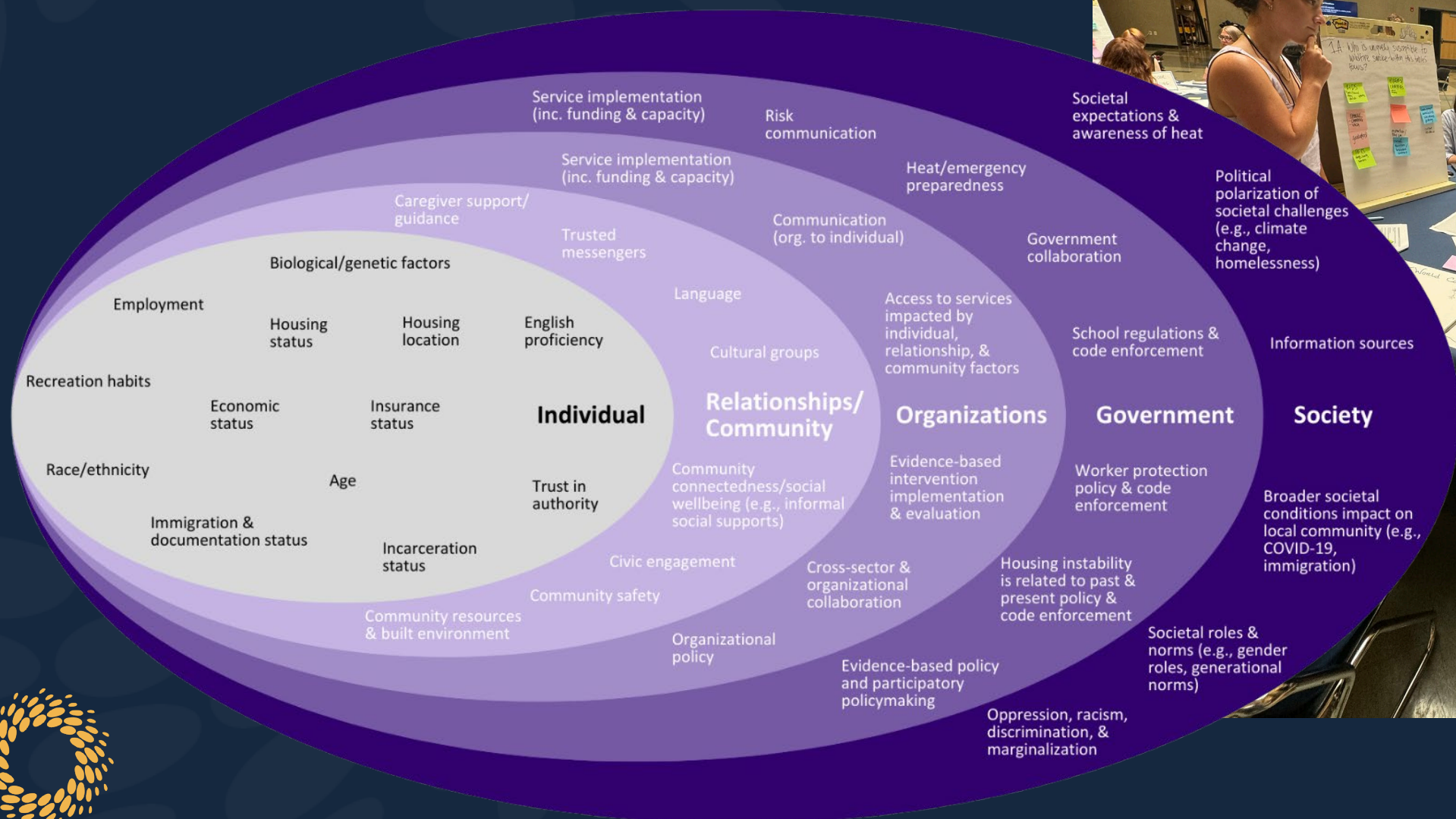
Discomfort	79.7%
Heat exhaustion	41.2%
Fainting/dizzy	27.6%
Heat cramps	20.1%
Not experienced any	12.7%
Heat stroke	6.2%

Spokane Community
Survey:

Experiences and
Perceptions of Extreme
Heat

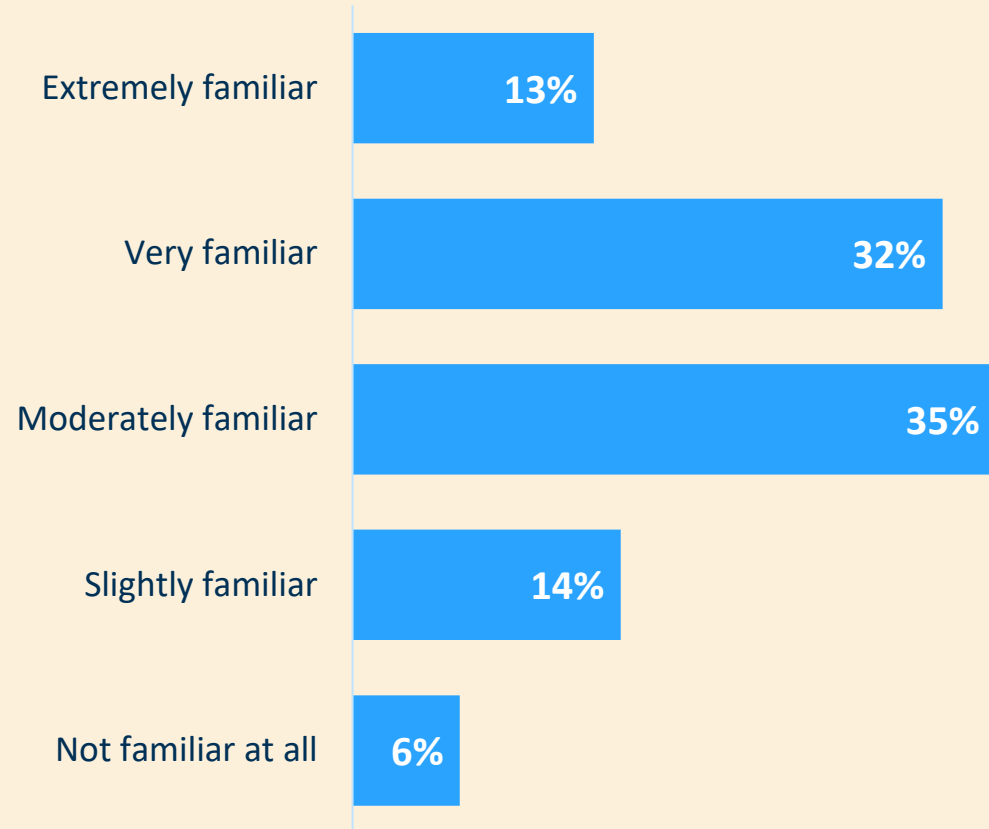


Heat Resilience: A Socio-Ecological Model

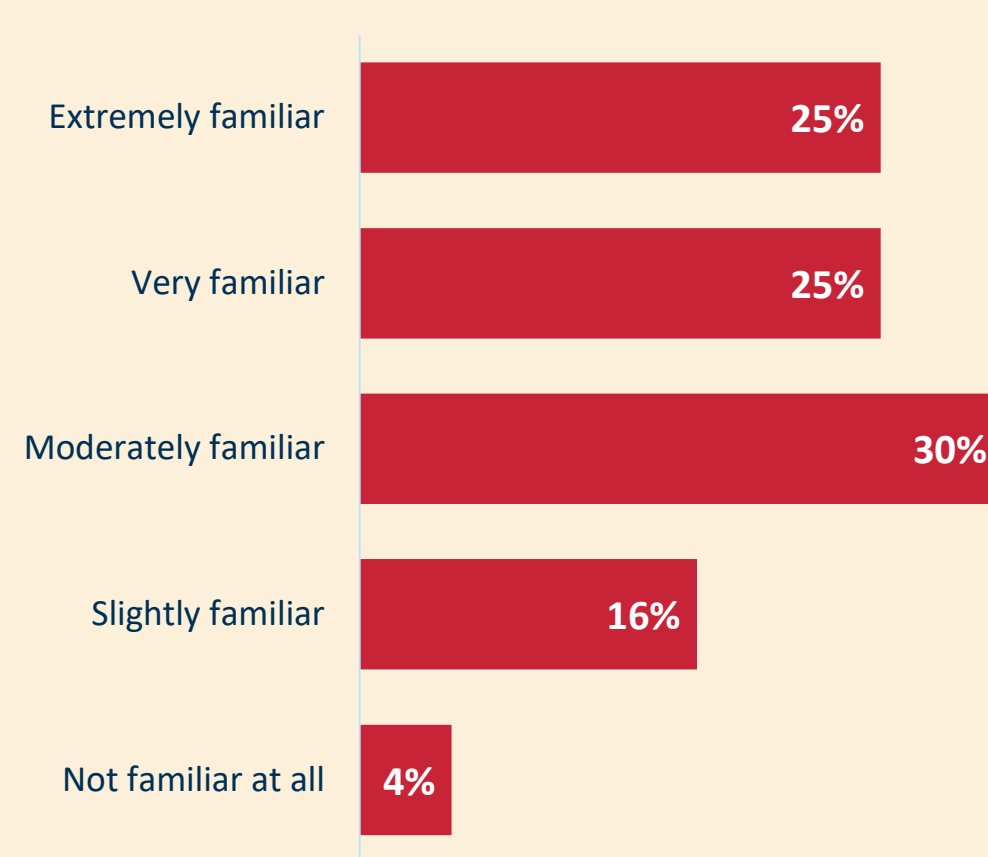


Less than half of responding East Central community members are familiar with the symptoms and risk factors associated with smoke- or heat-related illness.

% familiar with **smoke-related** symptoms and risk factors (n=69)



% familiar with **heat-related** symptoms and risk factors (n=69)



Insights from Community-Engaged Research: Heat

- Engage in long-term climate action planning
 - Prioritize nature-based long-term solutions
- Share heat health risk and exposure reduction information
- Financial assistance for home weatherization
- Establish safe locations for community members to go during extreme heat events



Insights from Community-Engaged Research: Smoke

- Share wildfire smoke health risk & exposure reduction educational materials
- Increase **access to portable air filters/home weatherization materials**
- Distribute protective action **guidelines associated with AQI**
- During wildfire smoke events
 - Provide clean air spaces
 - Promote responsible recreation
- Engage in **long-term** climate resilience planning



- Outline coordination plans for before, during, and after extreme heat and wildfire smoke events

- Equitable resource access and prioritization of risk reduction

- Preparedness
- Response
- Recovery
- Mitigation



Examples of proposed activities:

- Update city activation thresholds for heat and smoke
- Host educational workshops and trainings
- Establish a resilience hub network
- Update household preparedness kits
- Provide low-cost transportation on dangerous days
- Increase accessibility for residential HVAC systems
- Update building codes
- Expand urban tree canopy and ventilation corridors



Timeline

- June 2025: Launch as "proposals"
- Summer 2025: Outreach to community organizations for plan feedback and contributions
- Fall 2025: Comprehensive plan review
- Fall 2025-Spring 2026: Revisions made to move from proposals to plan
 - "Recommendations" --> "Action items"
 - "Potential partners" --> "Responsible actors"
- Summer 2026: Updated plans launch



Spokane Community Resilience Hub Network



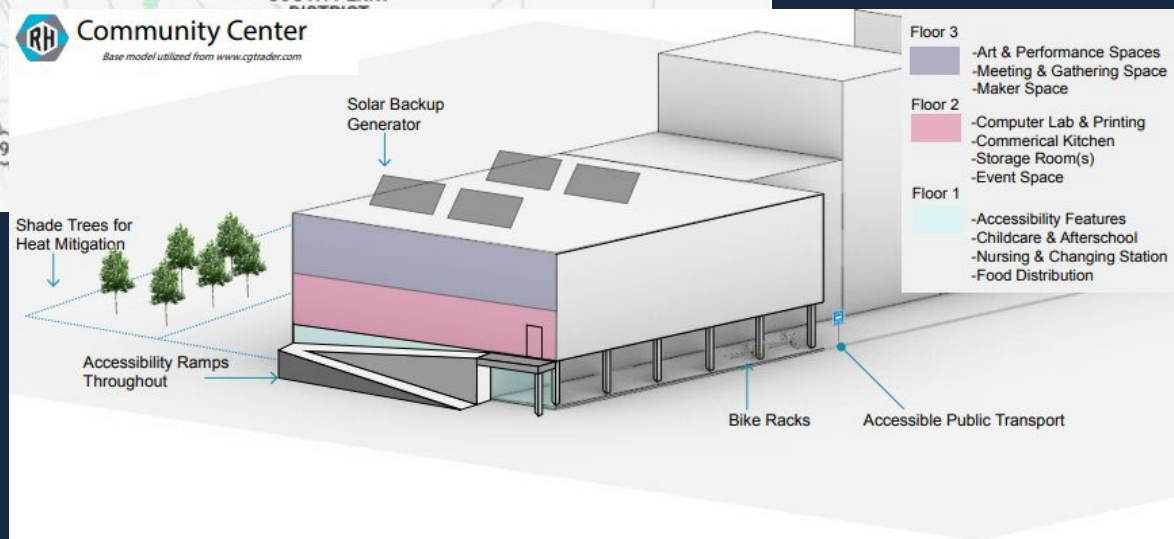
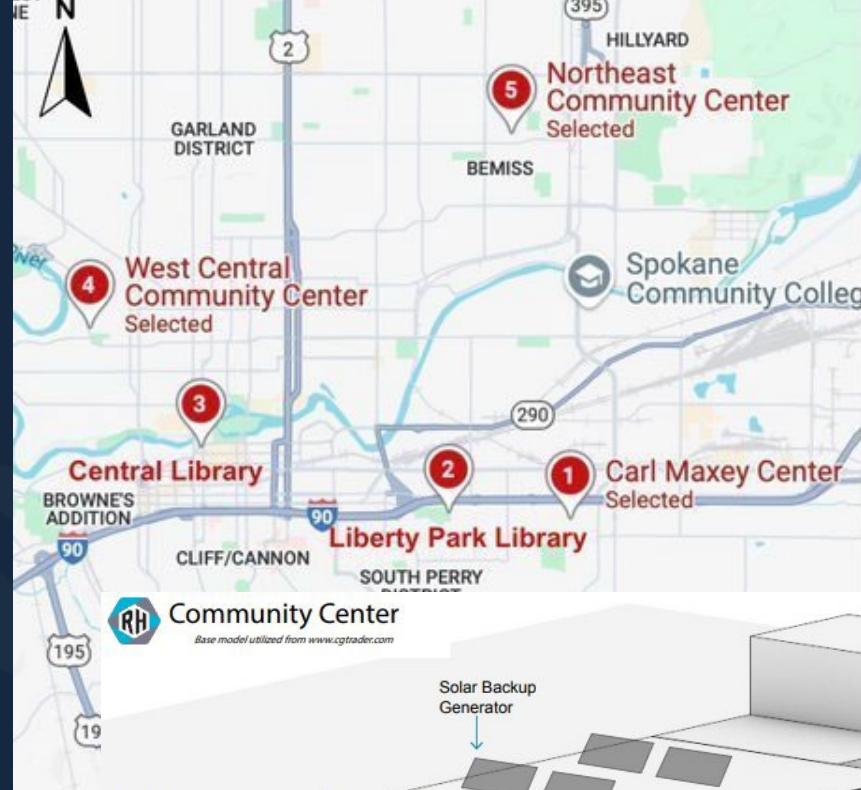
Gonzaga's Climate Institute plans to make Spokane more bearable in extreme climate events with \$20 million EPA grant

By Colton Rasanen



Young Kwak photo

Spokane Public Library's Central branch will become a "relief hub" under a new plan from Gonzaga's Climate Institute.



Services + Programming

Childcare & Afterschool
Commercial Kitchen
Food Storage & Distribution
Art Studio & Performance Space
Event and Gathering Space
Storage Space & Maker Space
Health & Mental Health Spaces



Communications

Computer Lab & Printing
Walkie-Talkies for Site
Emergency Comms Equipment
CERT Training & CERT 11



Building + Landscape

Changing & Nursing Room
Gender Neutral
Shade Trees for Heat Mitigation
Bike Parking and Storage
EV Charging Station
Accessible Public Transit
Gym & Playground
Maker Spaces & Toolshare



Power Systems

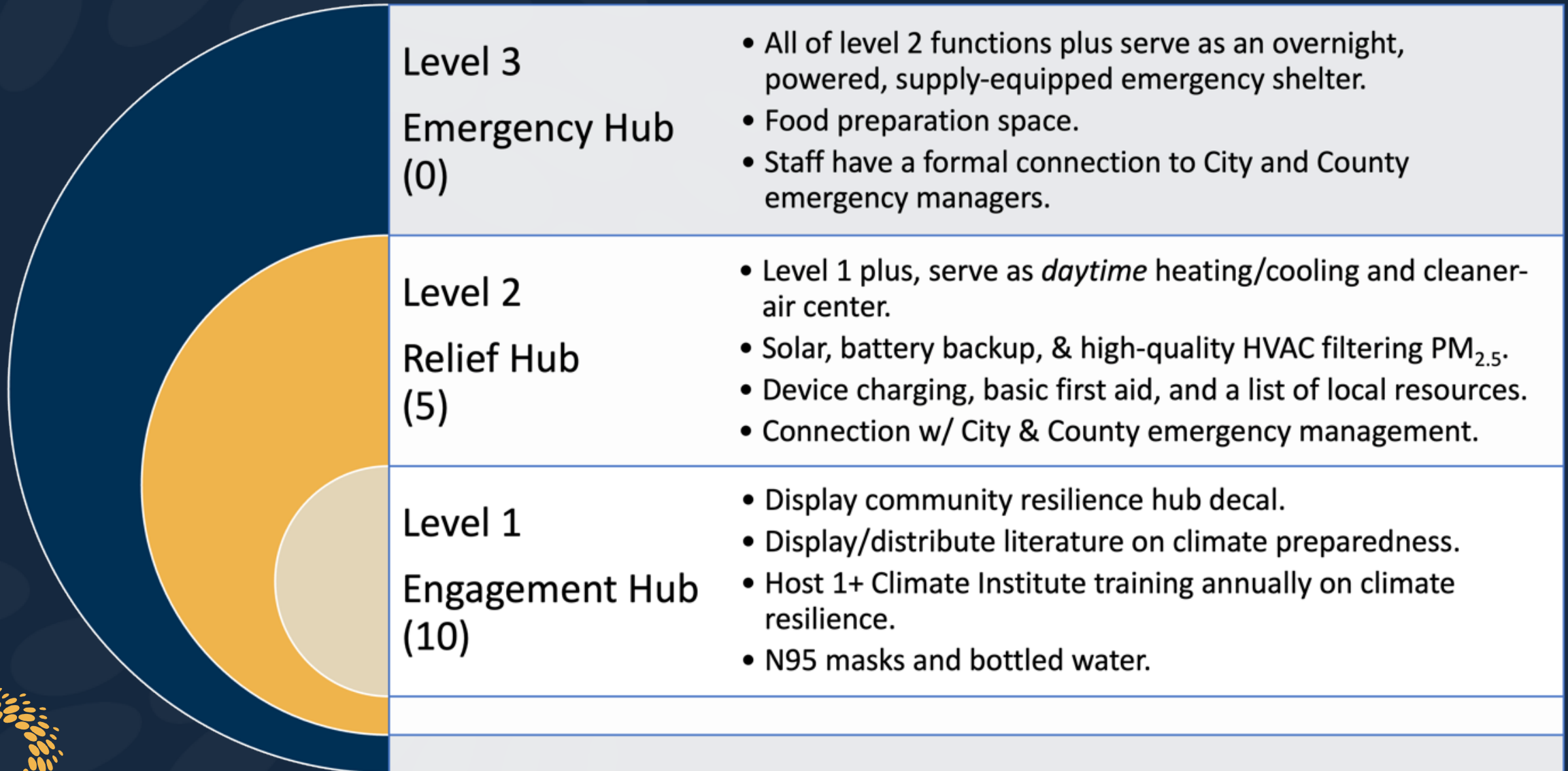
Solar Power
Battery Backup System
Possible Generator



Operations

Accessibility Ramps Throughout
Accessible Restrooms
Hearing & Visual Support
Shower & Bathroom Facilities
Maintenance Training Space
Local Job Training & Support

Spokane Community Resilience Hub Network



Opportunities for engagement from CRSB

- Updating City activation thresholds for extreme heat and poor air quality response
- Support for renters and landlords to improve AC access
- AC considerations for upcoming construction projects
- Promotion of the Spokane Community Resilience Collaborative
- Providing feedback on city extreme heat and wildfire smoke plans



Questions and discussion

Jester@gonzaga.edu





Institute *for* Climate, Water, *and the* Environment

gonzaga.edu/ClimateInstitute
ClimateInstitute@gonzaga.edu

