



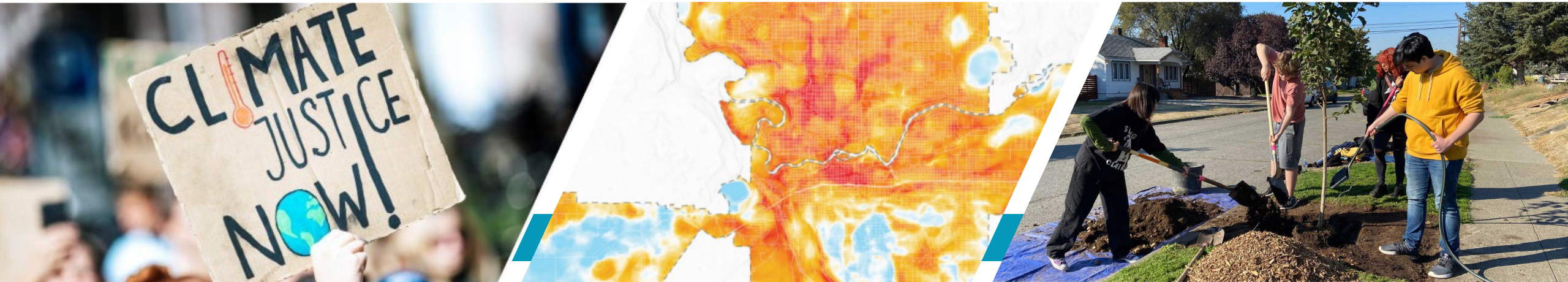
Climate Planning

Climate Resilience and Sustainability Board

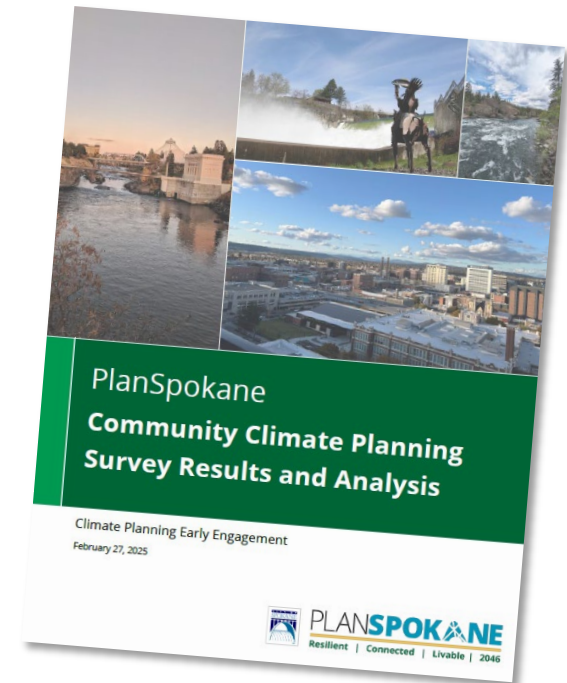
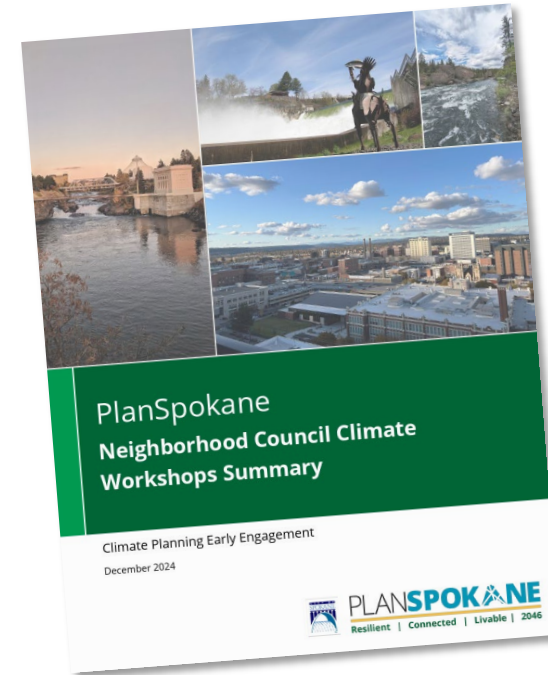
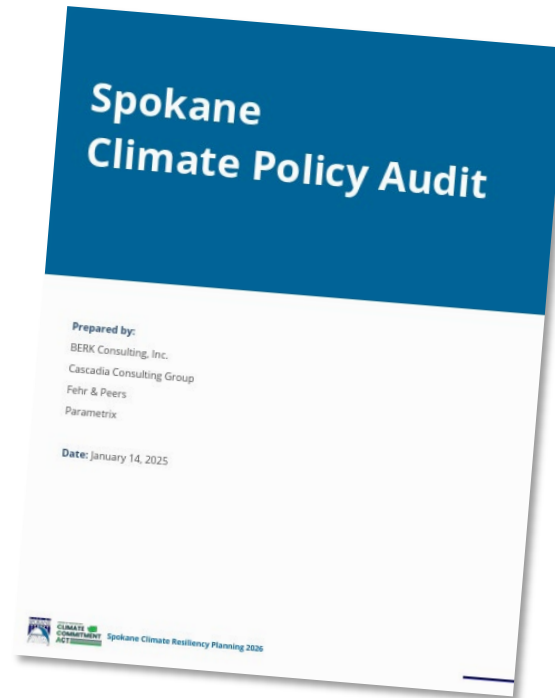
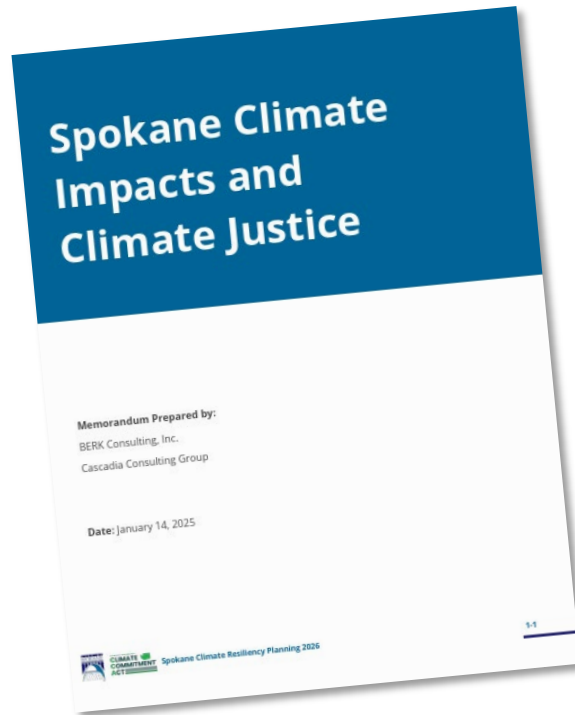
April 10, 2025

PLAN **SPOKANE**
Resilient | Connected | Livable | 2046

FUNDED BY WASHINGTON'S
**CLIMATE
COMMITMENT
ACT**



Recent Climate Planning Deliverables



Available online at
my.spokanecity.org/climateplanning








Climate Vulnerability Index

Provide the City and community with a baseline understanding of vulnerabilities + preliminary ranking of vulnerabilities' importance.

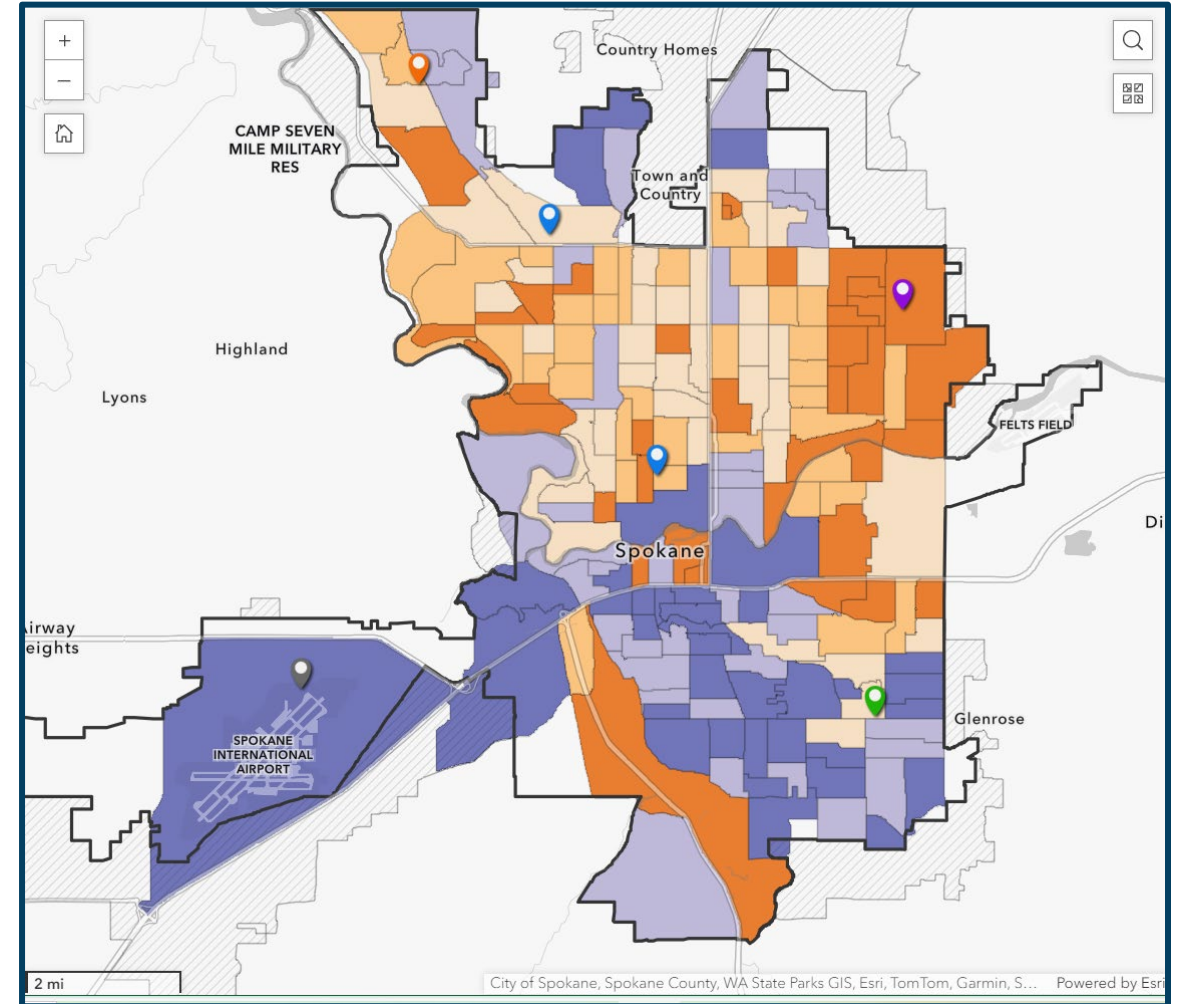
Public Comments

-  Extreme Heat Concern
-  Urban Flooding Concern
-  Lack of Street Trees
-  Access to Nature
-  Other

Climate Vulnerability Index

-  Very High
-  High
-  Moderate
-  Low
-  Very Low

Available online at planspokane.org



PLAN **SPOKANE**

Resilient | Connected | Livable | 2046

City of Spokane

Earth Day

Climate Planning Community Workshop

April 22

West Central Community Center, The Newton Room

6 - 7:30 p.m.

Learn more about City of Spokane Climate Planning at my.spokanecity.org/climateplanning
Contact the Climate Planning Team at ClimatePlanning@spokanecity.org



PLAN SPOKANE
Resilient | Connected | Livable | 2046

- **April 9**
 - Riverfront Spring Market
- **April 26**
 - Shadle Library
 - Arbor Day Celebration at Finch Arboretum
 - ReCraft Fair
- **April/May - Focus Groups**
 - NE Spokane
 - Youth
 - Climate Justice

<https://my.spokanecity.org/earthday/>



PLAN SPOKANE

Resilient | Connected | Livable | 2046

Climate Resiliency - Phase 1 Tasks

Steps and Pathways to Integrate Resilience into Comprehensive Plan



Next Steps: April-May: Phase 1 Engagement Wrap-up
May-June: CRVA
June 15: Phase 1 Grant Materials Due
July 1: Phase 2 Grant Begins



PLAN **SPOKANE**

Resilient | Connected | Livable | 2046

Join the Conversation!



my.spokanecity.org/climateplanning



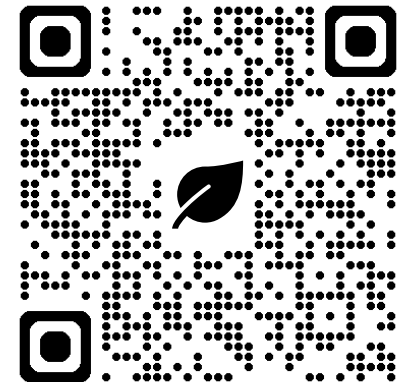
climateplanning@spokanecity.org



PlanSpokane Monthly Newsletter



Engage.Spokane.gov



PLAN SPOKANE

Resilient | Connected | Livable | 2046