



Aquifer Protection Area

Climate Resiliency & Sustainability Board
March 2025

Overview



City has an opportunity to join Spokane County's Aquifer Protection Area (APA)



The current authorization for the County's APA expires at the end of 2025



County will ask voters to renew the APA



Climate Resilience and Sustainability Board could choose to make a recommendation around this opportunity during its March meeting

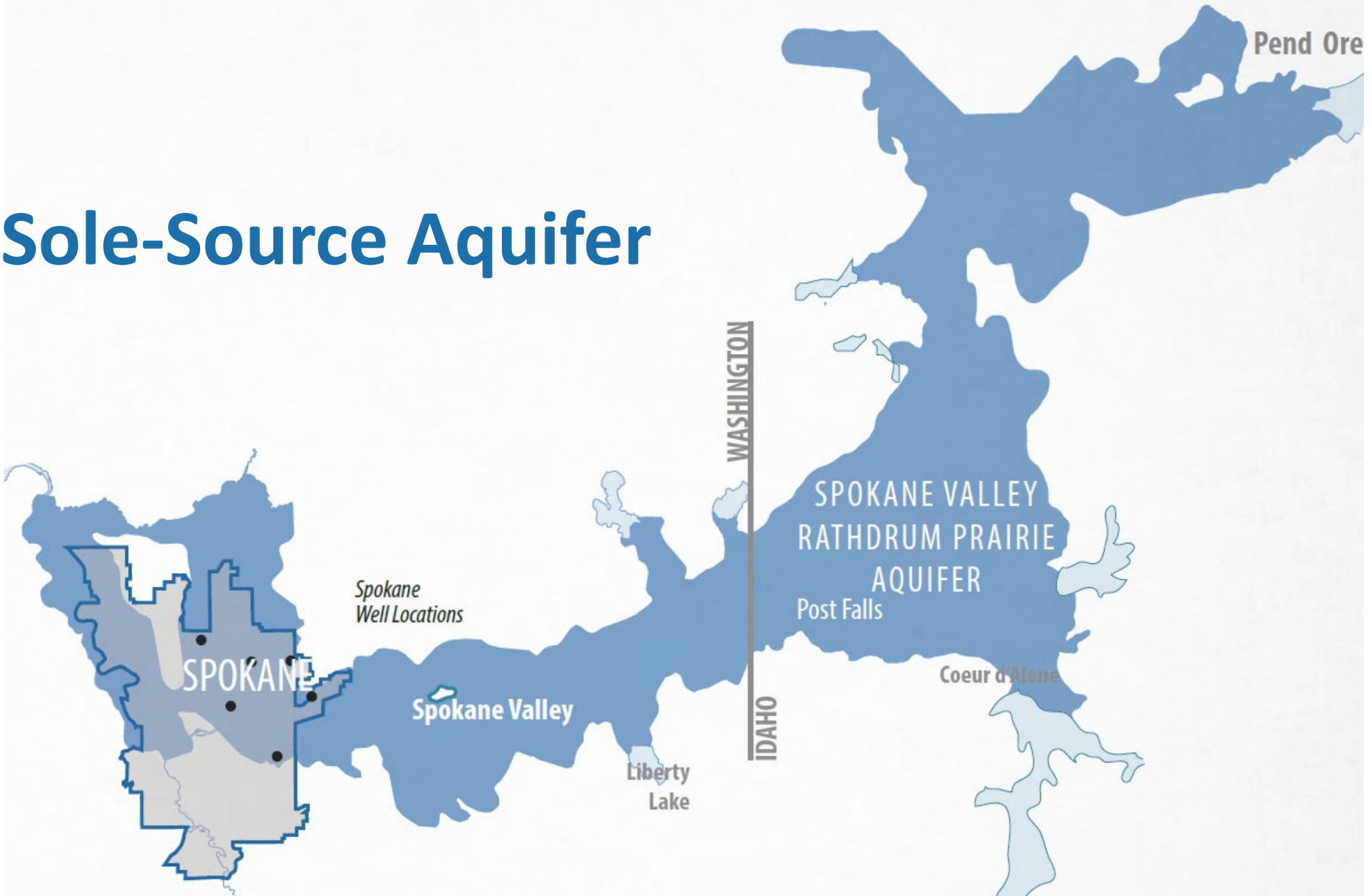


Background

- **Aquifer Protection Areas** are authorized by **state law** – RCW 36.36
- **Allows fees** - expressed as a dollar amount **per household unit**--for **withdrawal of water** and/or on-site **sewage disposal**
- **Fees can pay for certain activities** including:
 - *Preparation of a comprehensive plan to protect, preserve, and rehabilitate subterranean water.*
 - *Construction of facilities to address water-borne pollution, improve water quality, manage wastewater and stormwater, and deliver drinking water.*
 - *Monitoring and inspecting on-site sewage disposal systems or community sewage disposal systems for compliance.*
 - *Monitoring the quality and quantity of subterranean water and analyzing data that is collected.*
 - *Public education relating to protecting, preserving, and enhancing subterranean waters.*



Our Sole-Source Aquifer



Spokane County Aquifer Protection Area

- **Spokane County** has had an **APA for 40 years**
 - *City was part of the original APA*
 - *Chose not to participate when the APA was renewed in 2004*
- County's APA **charges residential properties**
 - *\$15/year for each property connected to drinking water*
 - *And \$15/year for those who are NOT connected to sewage treatment*
- **Commercial properties pay based on meter size**
- **Funding pays for projects and education**, including education activities at the County's treatment facility
 - *Removing septic systems over the aquifer has been a major focus*
 - *And long-term monitoring of pollutants in the aquifer*



Additional Financial

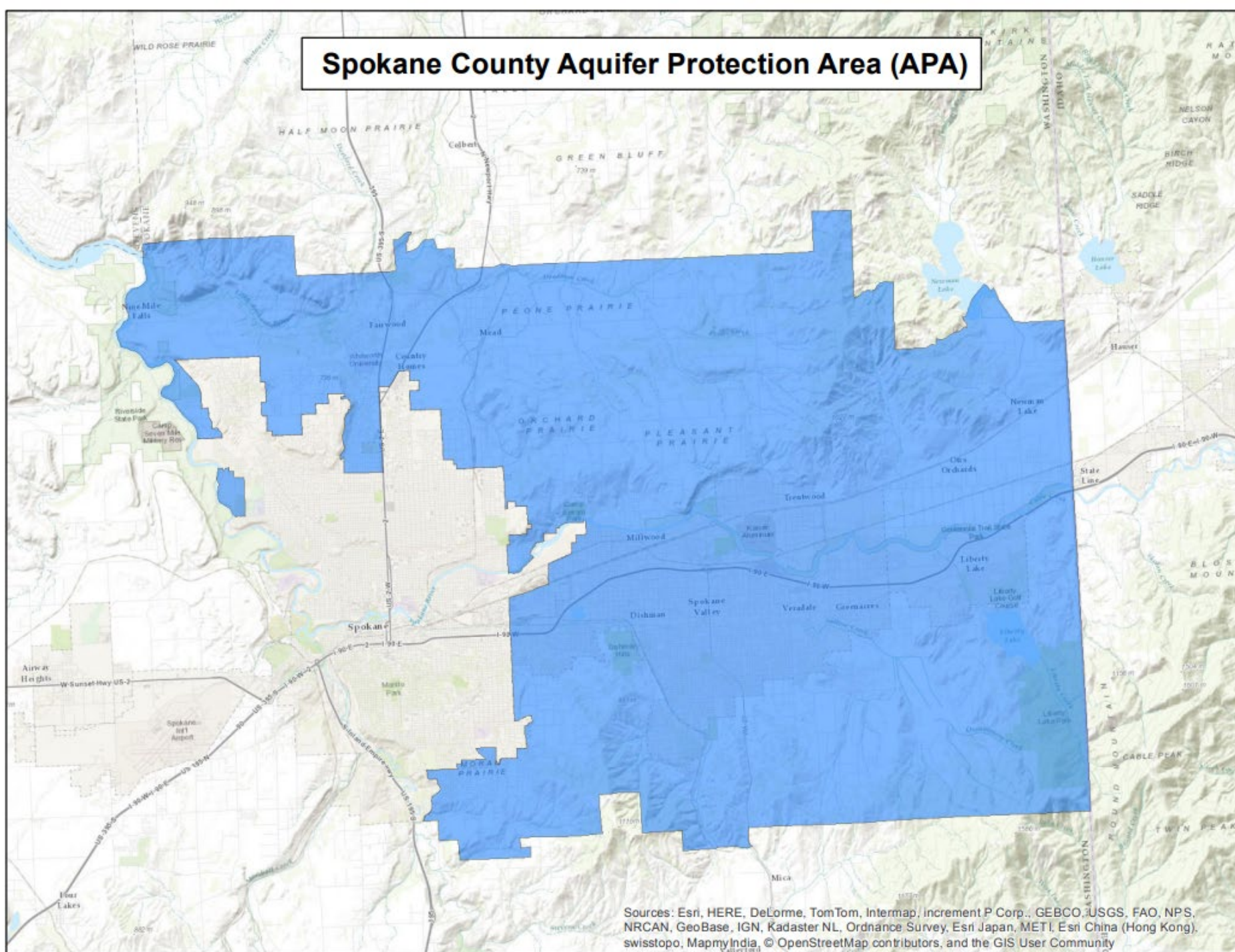
- **\$15 per year for a single-family house**

Non-House

5/8 in Meter	\$15
3/4 in Meter	\$15
1 in Meter	\$30
1.5 in Meter	\$60
2 in Meter	\$120
3 in Meter	\$240
4 in Meter	\$450
6+ in Meter	\$960



Spokane County Aquifer Protection Area (APA)



Sources: Esri, HERE, DeLorme, TomTom, Intermap, increment P Corp., GEBCO, USGS, FAO, NPS, NRCAN, GeoBase, IGN, Kadaster NL, Ordnance Survey, Esri Japan, METI, Esri China (Hong Kong), swisstopo, MapmyIndia, © OpenStreetMap contributors, and the GIS User Community

Possible uses for funds by City

- **Protection** of our sole source aquifer is important to the **City of Spokane**
 - *We operate the **largest drinking water utility** in the region!*
 - *Deliver up to **150 million gallons a day!***
- **Potential uses** of APA funding:
 - *Investing in **infrastructure that addresses pollutants** of concern, such as **PFAS***
 - ***Controlling stormwater** in both our separated and combined sewer areas*
 - ***Delivering projects** that would mitigate the impacts of climate change on the aquifer*
 - ***Public education** relating to the aquifer and best management practices*
- **APA would raise** about \$1.8 M/year for the City



What's next?

- **City Council** would need to **adopt a resolution**, agreeing to place the **issue before voters**
- **City Council** would need to **adopt an Inter-Local Agreement** with the **County** addressing the APA
- **Spokane County Commission** would need to place it on the ballot





Questions?