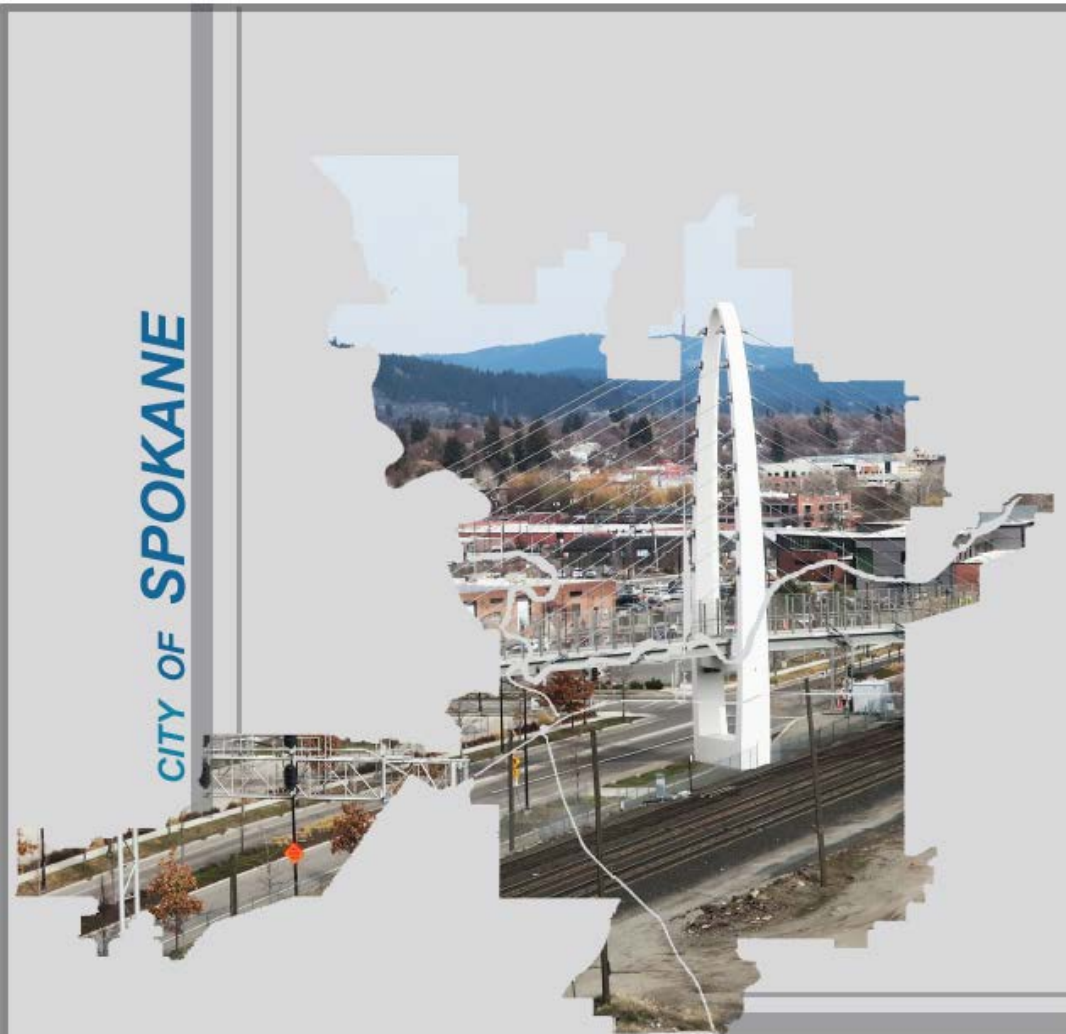


Spokane Plan
Commission -
Comp Plan Consistency
Review –
6-year Street Program
Update – 2025-2030
April 10, 2024

Kevin Picanco, P.E.
Principal Engineer
Integrated Capital Management



2025-2030
Six Year Comprehensive
Street Program

Today's Discussion

- Program Overview / Schedule
- Completed Projects
- Existing Project Updates
- **New Projects Added to the Program**
- **Comp Plan Consistency Review**
 - No Action Today
- Next Steps

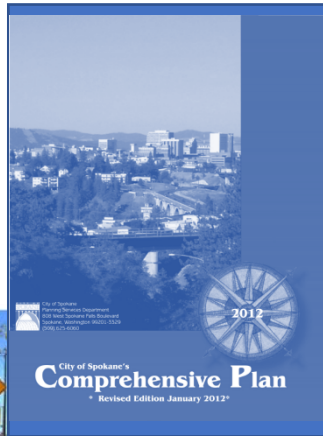


The City of Choice

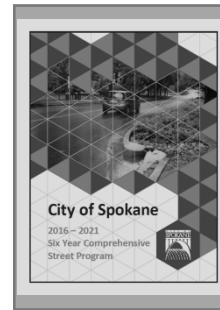


Role of the 6-Year Program

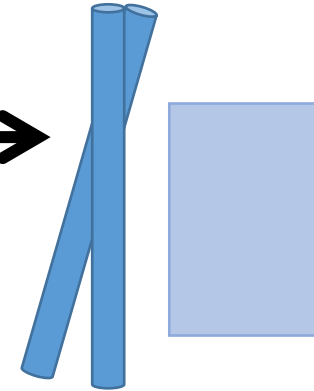
Comp Plan



6 Year

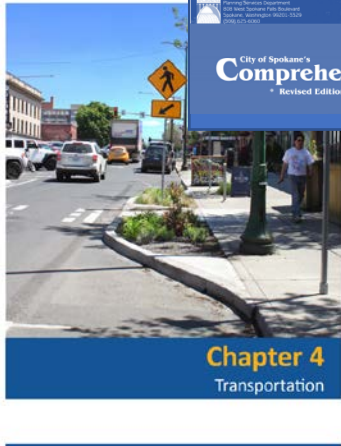


Design & Construction



- Mandatory annual update. Adoption required by July 1 of each year by State law.

- ✓ New projects coming in
- ✓ Completed projects coming out
- ✓ Content updates



Schedule / Next Steps – *Subject to Change*

- Jan 26 – Council Study Session – Intro
- Feb 14 – Plan Commission Intro
- Feb 29 – Council Study Session #2
- Mar 5 – PCTS Workshop – Comp Plan Consistency Review
- Apr 2 – PCTS Workshop - Consistency Review - Recommendation
- **Apr 10 – Plan Comm. Consistency Review Workshop**
- May 8 – Plan Comm. Consistency Review & Hearing
- May 20 – PIES - Draft Program
- June 3 – Council Briefing – Present Draft Program
- June 17 – Council Hearing for Approval
- Early July – Submit Adopted program to WSDOT and SRTC



Completed Capital Projects - Removed from Program

- Driscoll/Alberta/Cochran Sidewalk
- South Gorge Trail Connection
- Division St. Pedestrian Hybrid Beacons *
- TJ Meenach Drive
- Maple St. Bridge Deck Rehabilitation
- Maple/Ash Chip Seal – NW Blvd. to Rowan *
- Haven St. Grind & Overlay – Market to Market *
- Haven St. Sidewalk – Heroy to Rockwell *

* Project bid and contract awarded in 2023,
construction in 2024.



The City of Choice

Project Updates

- Existing Projects in 6-year Streets Program
- Grant Funding Award in 2023
- Projects Will Advance – Planning/Design in 2024/25

- Millwood Trail (SRTC Grant)
- Riverside – Monroe to Wall (TIB Grant)
- Fish Lake – Cent Trail Connection Ph1 (SRTC Grant)
- Fish Lake – Cent Trail Connection Ph2 (SRTC Grant – design only)
- Palouse-Freya Roundabout (Federal Congressionally Directed Spending)



New Project Summary

- 9 New Projects Added to the Program - Preliminary
 - 7 New Grant Awards - \$22M+

New Projects from Reconstruction Matrix?

- No Additional Full Reconstruction Projects Proposed Due to Funding Constraints



New Projects Added to the Program

- Safe Streets for Spokane – (*SS4A Fed grant*)
- Bridge Deck Preservation Bundle
Green/Freya/Havana (*WSDOT Local Bridge Program-Fed grant*)
- Wellesley Ave. Chip Seal (*SRTC Preservation – Fed grant*)
- Washington/Stevens St.- 9th to 3rd G&O (*SRTC Preservation–Fed grant*)
- 3rd Ave. – Monroe to Division G&O (*SRTC Preservation–Fed grant*)
- 3rd Ave. – Walnut to Stevens & Stevens St. – 8th to 3rd G&O
(*NHS Asset Management WSDOT/Fed*)
- Sprague Ave. – Freya to Havana & Alki/Broadway – Freya to Havana G&O (*NHS Asset Management WSDOT/Fed*)



New Projects Added to the Program (con't)

- 16th / 17th / Grandview
- Rockwood Blvd. - Grand to Cowley

Honorable Mention

- North Hillyard Sidewalk Infill



STREET PROGRAM RECONCILIATION SHEET

(Comparing 2025-30 against 2024-29 6yr. Program)

New Projects Added to Six-Year Program (2025-2030)

Section/ Funds/ CN Year	Project Name	Project Description	Purpose Statement	Project Phase Fully Funded			Cost Estimate
				Planning	Design	Constr.	
<i>Pedestrian & Bikeways</i> 2025 - 2027	Safe Streets for Spokane	Bike and Pedestrian improvements in the downtown core, North Bank, West Central, Logan and East Central neighborhoods. Work includes, bike lanes, bike/ped crossing improvements, sidewalk infill, stairwell replacement and related safety improvements.	Improve bike and pedestrian safety. Address gaps in the active transportation network. Improve access to transit.	Yes	Yes	Yes	\$12.0M
<i>Bridge</i> 2026	Bridge Deck Preservation Bundle - Greene, Freya (x2), Havana	Bridge deck surface rehabilitation and preservation.	Bridge deck maintenance and preservation to protect the bridge structure, extend bridge life and delay need for more costly rehabilitation.	n/a	Yes	Yes	\$4.7M
<i>Capital Improvements</i> 2025	Wellesley Ave. Chip Seal - Maple to Division.	Pavement preservation via chip seal coat.	Preserve and extend the life of the pavement surface.	n/a	Yes	Yes	\$600 k
<i>Capital Improvements</i> 2025 / 26	Washington / Stevens - 9th to 3rd Grind & Overlay	Pavement rehabilitation and preservation. Asphalt grind and overlay, pavement repair and ADA ramps.	Rehabilitate the asphalt pavement surface and extend the life of the pavement structural section.	n/a	Yes	Yes	\$2.0M
<i>Capital Improvements</i> 2025 / 26	3rd Ave. - Monroe to Division Grind & Overlay	Pavement rehabilitation and preservation. Asphalt grind and overlay, pavement repair and ADA ramps.	Rehabilitate the asphalt pavement surface and extend the life of the pavement structural section.	n/a	Yes	Yes	\$1.7M
<i>Capital Improvements</i> 2025 / 26	3rd Ave. - Walnut to Stevens; Stevens St. - 8th Ave. to 3rd Ave. Grind & Overlay	Pavement rehabilitation and preservation. Asphalt grind and overlay, pavement repair and ADA ramps.	Rehabilitate the asphalt pavement surface and extend the life of the pavement structural section.	n/a	Yes	Yes	\$3.7M
<i>Capital Improvements</i> 2026	Sprague Ave. - Freya to Havan; Alki/Broadway - Freya to Havana Grind & Overlay	Pavement rehabilitation and preservation. Asphalt grind and overlay, pavement repair and ADA ramps.	Rehabilitate the asphalt pavement surface and extend the life of the pavement structural section.	n/a	Yes	Yes	\$3.8M
<i>Capital Improvements</i> 2026	Grandview / 16th / 17th	Street realignment and reconstruction. Integrated project with planned water and wastewater improvements.	Realign the Grandview / 16th / 17th Ave. corridor for improved alignment and to meet City standards.	n/a	Yes	Yes	\$900 k
<i>Capital Improvements</i> 2026	Rockwood Blvd. - Grand to Cowley Grind & Overlay	Pavement rehabilitation. Asphalt grind and overlay, pavement repair and ADA ramps. Integrated project with planned water line improvements.	Rehabilitate the asphalt pavement surface and extend the life of the pavement structural section.	n/a	Yes	Yes	\$1.53M

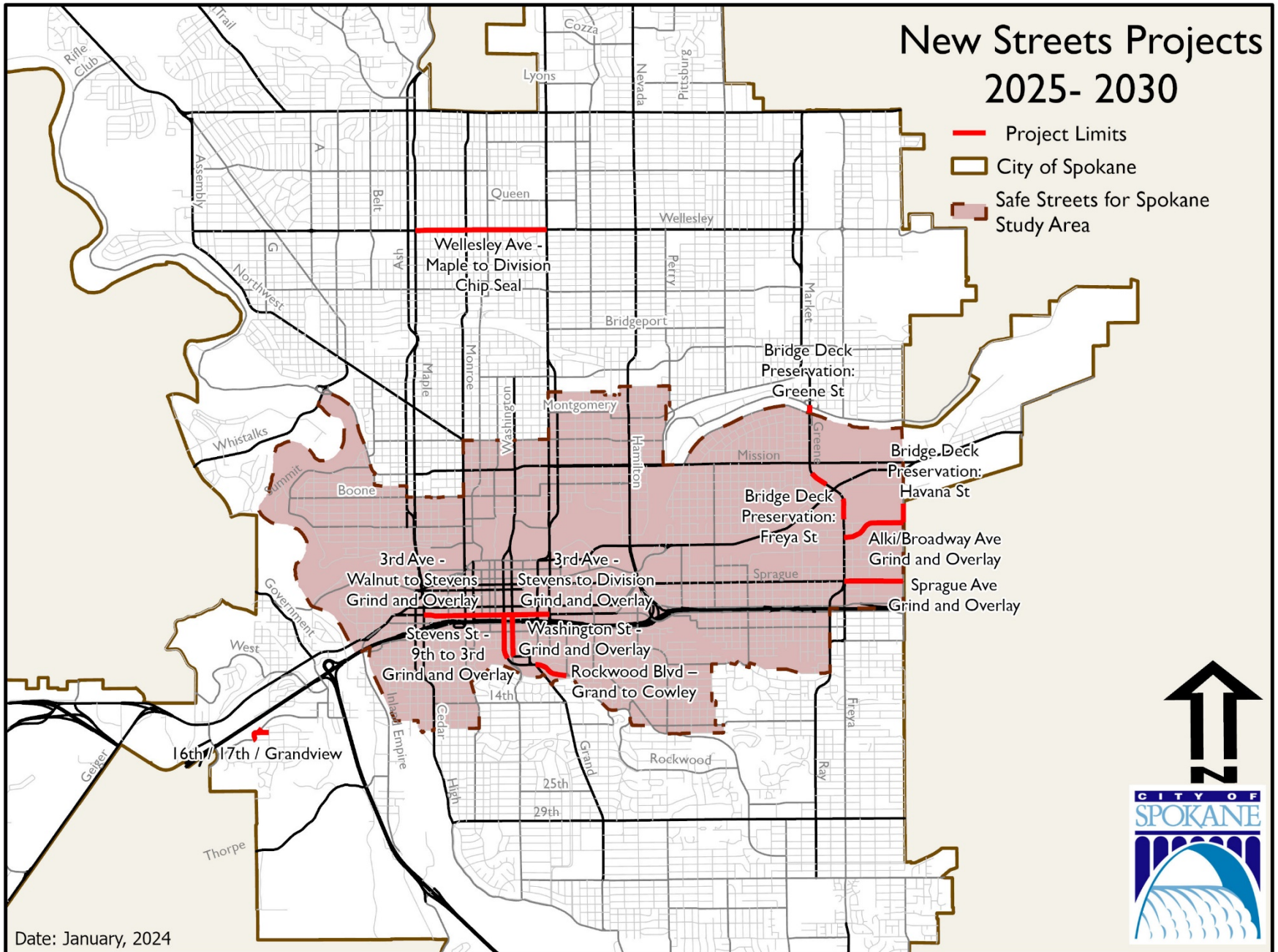
Honorable Mention

Section	Project Name	Comment	Status				
<i>Pedestrian & Bikeways</i> 2025/26	North Hillyard Sidewalk Infill	Sidewalk infill. Central Ave. to Francis Ave. and Lacey St. to Haven St. Funded through the TIB-Sidewalk program.	Fully funded; design to begin 2024/25. Construction in 2025 or 2026.	n/a	Yes	Yes	\$900k

Projects Completed or Removed from Six-Year Program

Section	Project Name	Comment	Status				
<i>Bridge</i>	Maple St. Bridge Deck Rehab		Completed in 2023				
<i>Capital Improvements</i>	TJ Meenach Dr.		Completed in 2023				
<i>Capital Improvements</i>	Maple / Ash Chip Seal - NW Blvd. to Rowan		Complete in 2024				
<i>Capital Improvements</i>	Haven St. Grind & Overlay		Complete in 2024				
<i>Pedestrian & Bikeways</i>	Driscoll/Alberta/Cochrane Sidewalk		Complete in 2024				
<i>Pedestrian & Bikeways</i>	South Gorge Trail Connection		Complete in 2024				
<i>Pedestrian & Bikeways</i>	Division St. Ped Hybrid Beacon		Complete in 2024				
<i>Pedestrian & Bikeways</i>	Haven St. Sidewalk - Heroy to Rockwell		Complete in 2024				

New Projects Added to the 6-year Streets Program



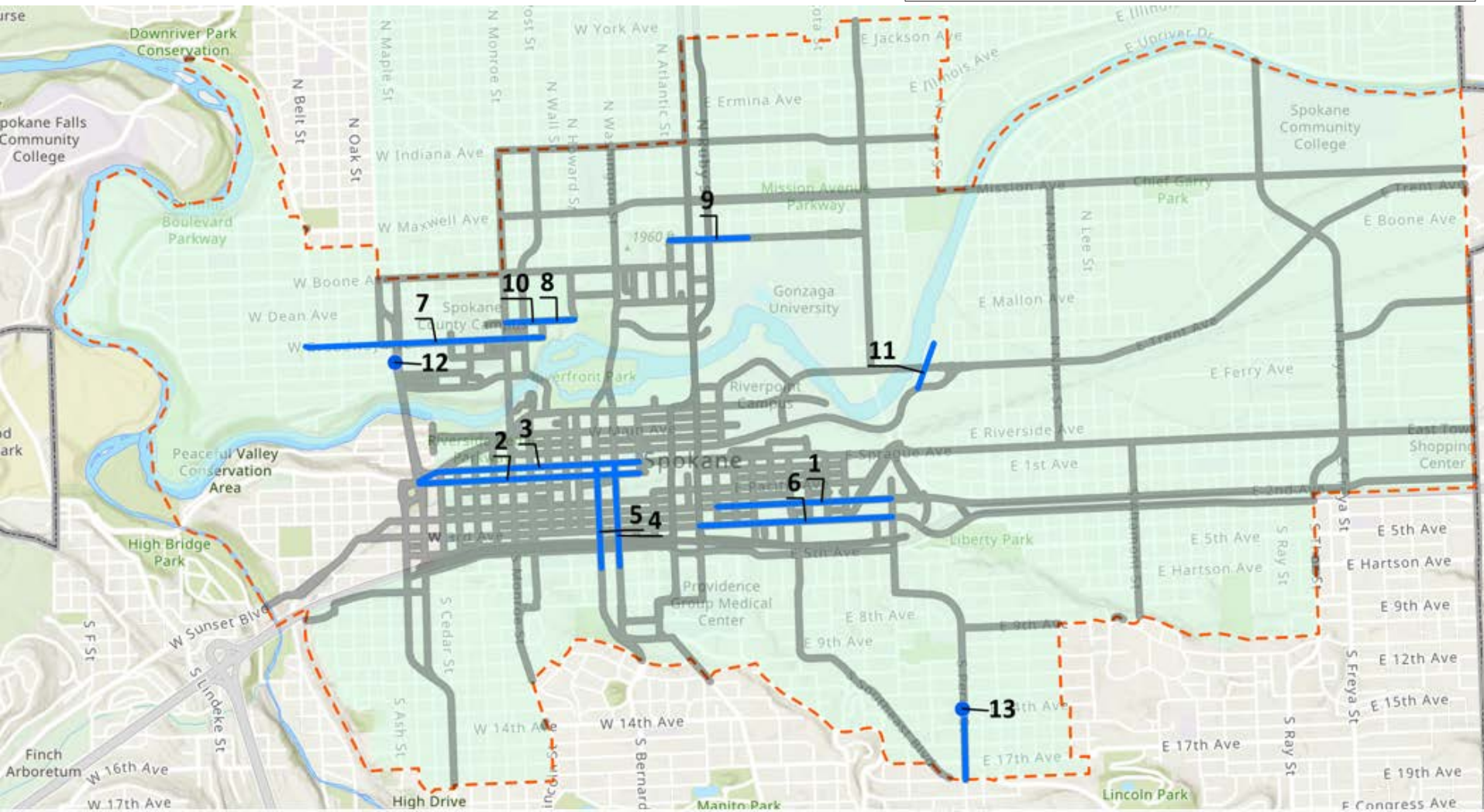
Safe Streets for Spokane

Total Project Cost: \$12.0 M

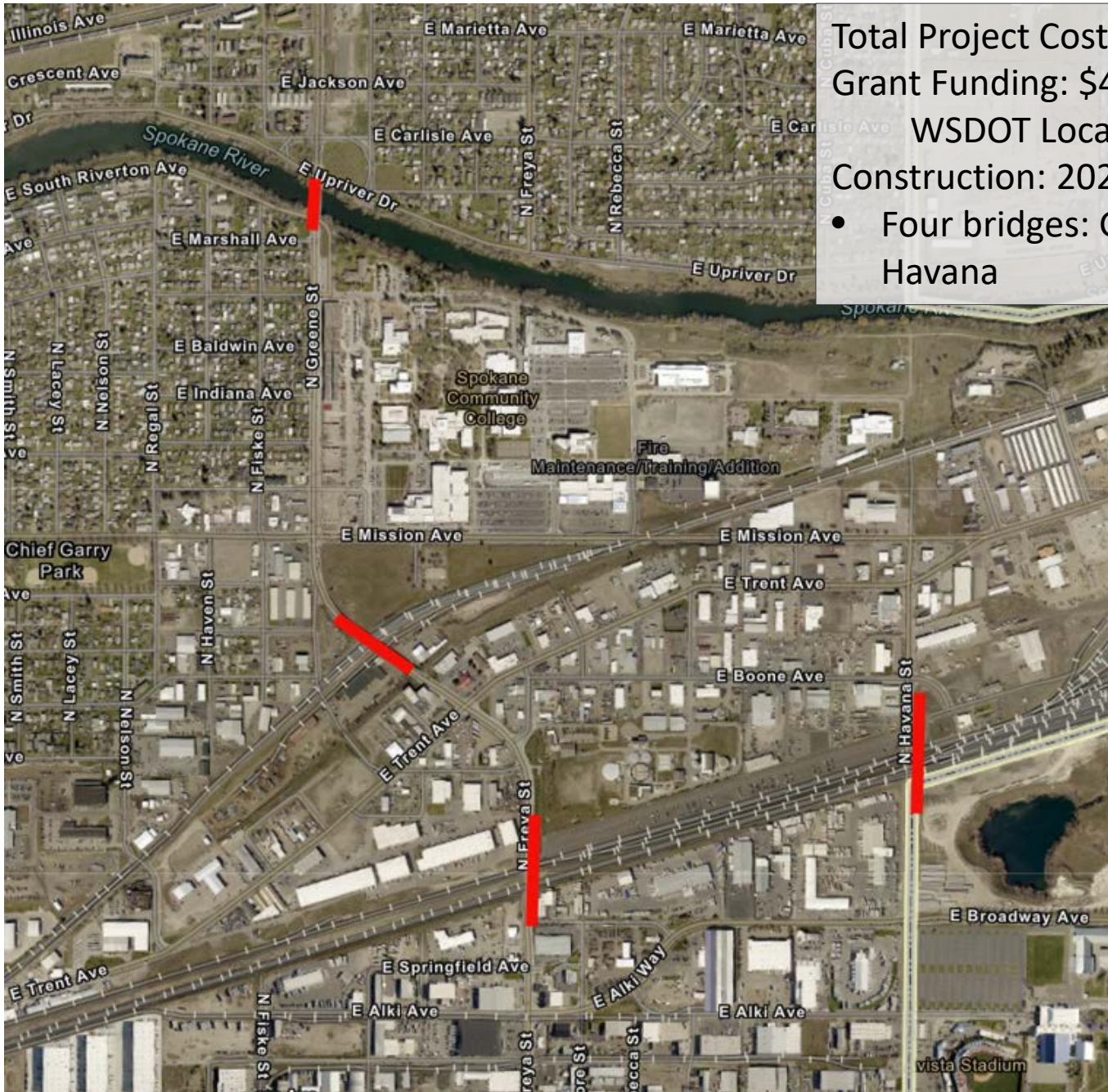
Grant Funding: \$9.6 M

Safe Streets for All Grant - Fed
Construction: 2026-2027

- Multiple Const packages
- Additional scoping to occur



Bridge Deck Preservation Bundle



Total Project Cost: \$4.7 M

Grant Funding: \$4.7 M

WSDOT Local Bridge Program- Fed

Construction: 2026

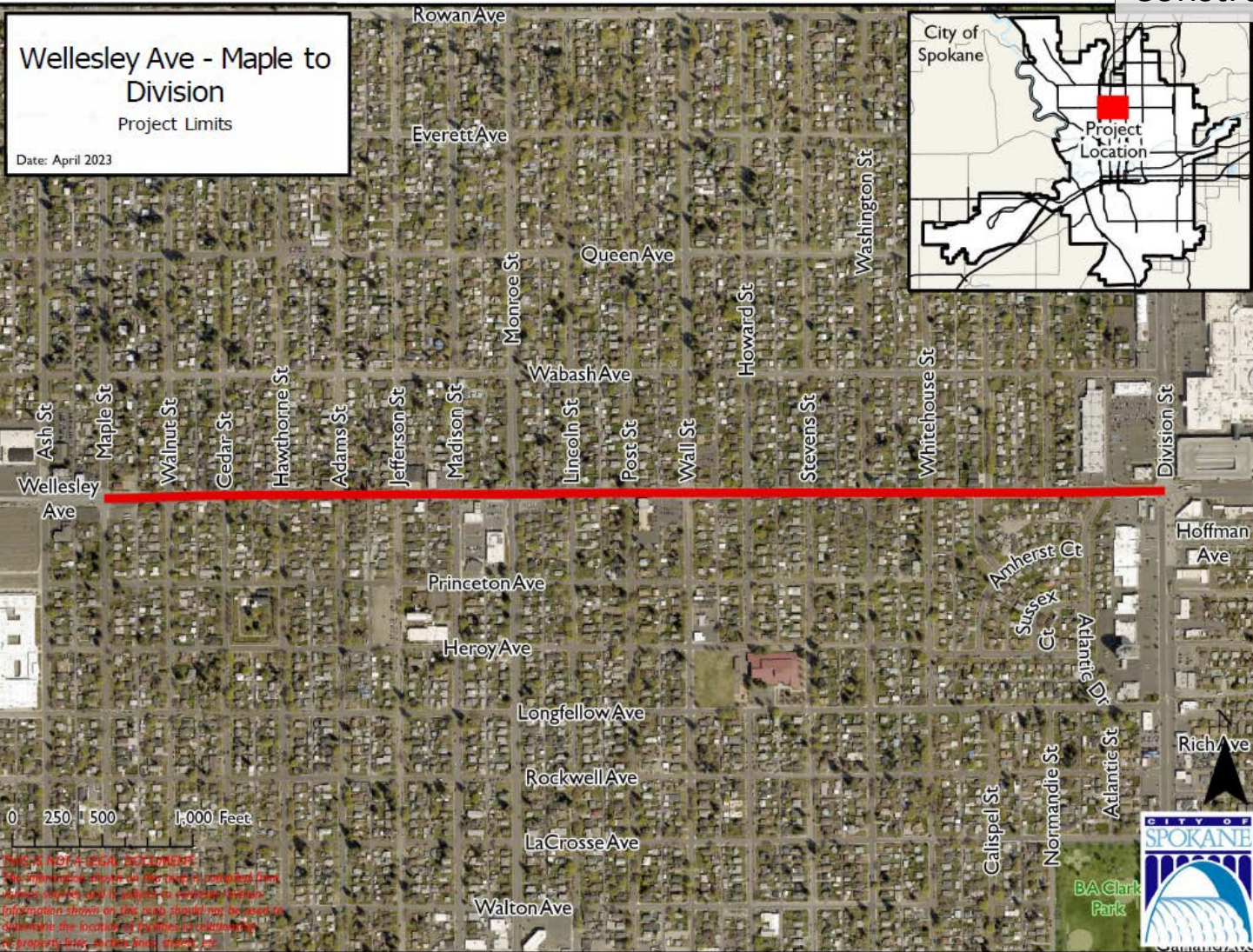
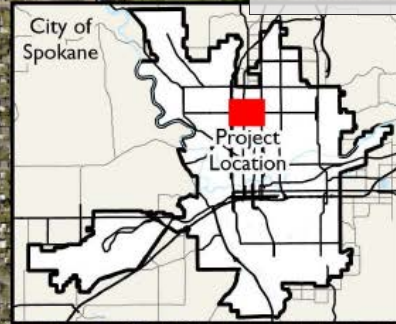
- Four bridges: Greene, Freya x2, Havana

Wellesley Ave. Chip Seal – Maple to Division

Total Project Cost: \$577,000
Grant Funding: \$433,000
SRTC Preservation - Fed
Construction: 2025

Wellesley Ave - Maple to
Division
Project Limits

Date: April 2023



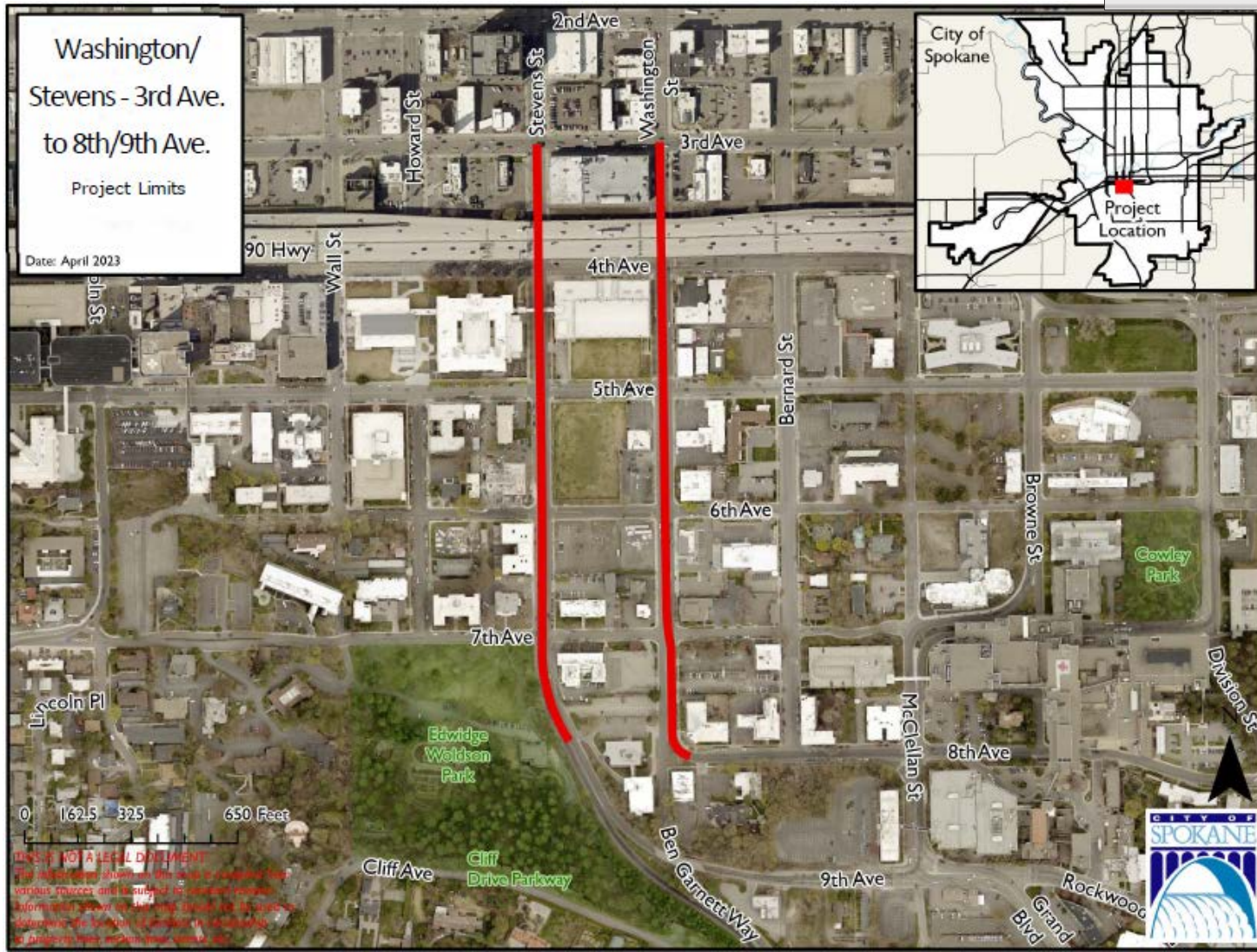
0 250 500 1,000 Feet

THIS IS NOT A LEGAL DOCUMENT
The information shown on this map is compiled from various sources and is subject to change without notice. Information shown on this map should not be used to determine the location of property or other information. A professional survey should be used for all legal purposes.



Washington/Stevens – 9th to 3rd Grind & Overlay

Total Project Cost: \$2.0M
Grant Funding: \$1.5M
SRTC Preservation - Fed
Construction: 2025 or 26



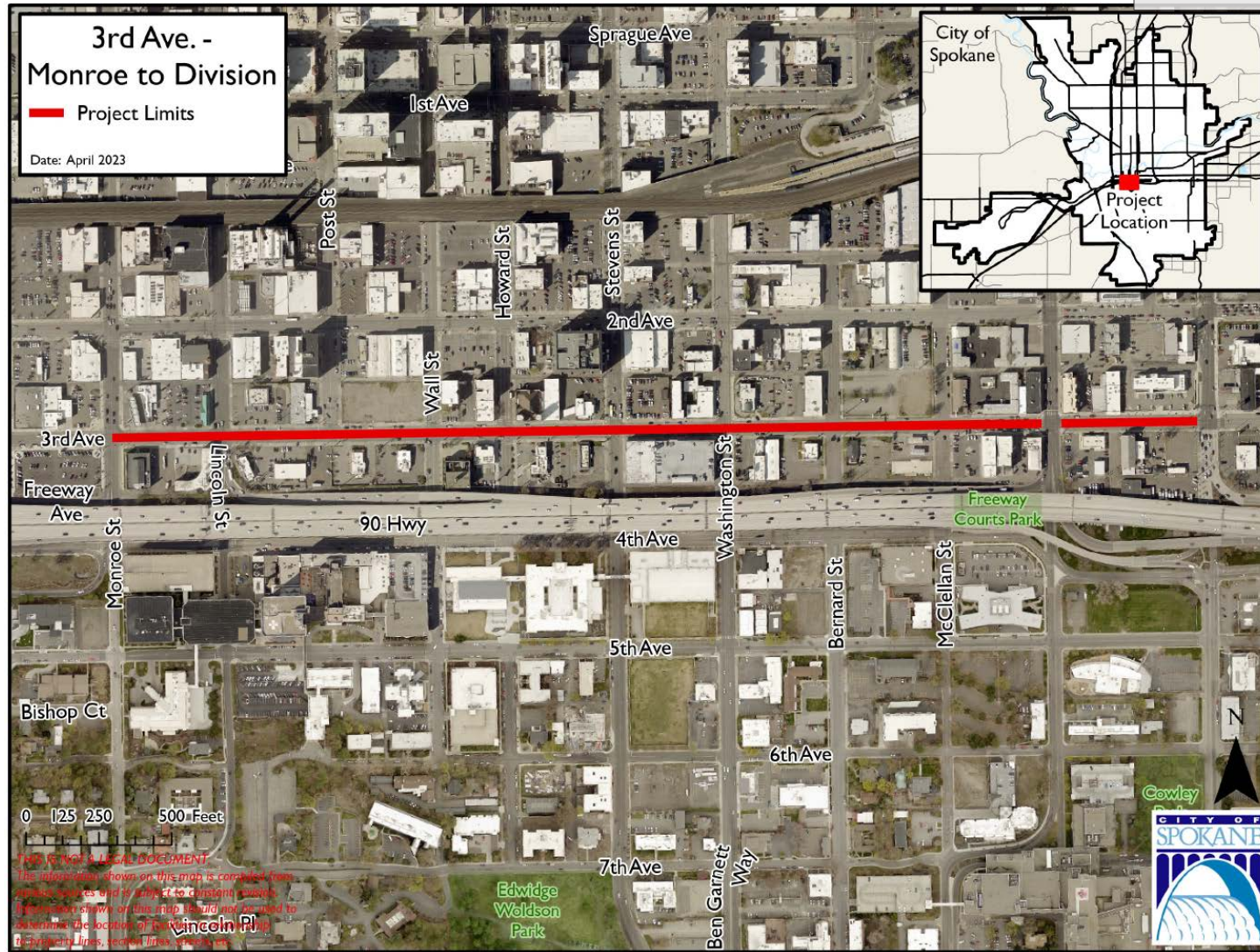
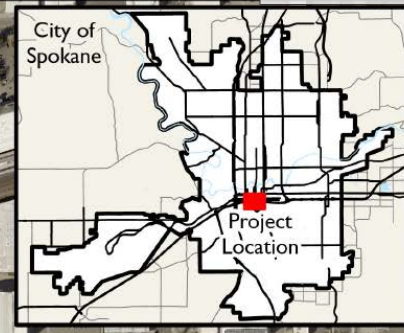
3rd Ave. – Monroe to Division Grind & Overlay

Total Project Cost: \$1.65M
Grant Funding: \$1.1M
SRTC Preservation - Fed
Construction: 2025 or 26

3rd Ave. - Monroe to Division

Project Limits

Date: April 2023



THIS IS NOT A LEGAL DOCUMENT
The information shown on this map is compiled from various sources and is subject to constant change. Information shown on this map should not be used to determine the location of any utility lines, street lines, or other features.

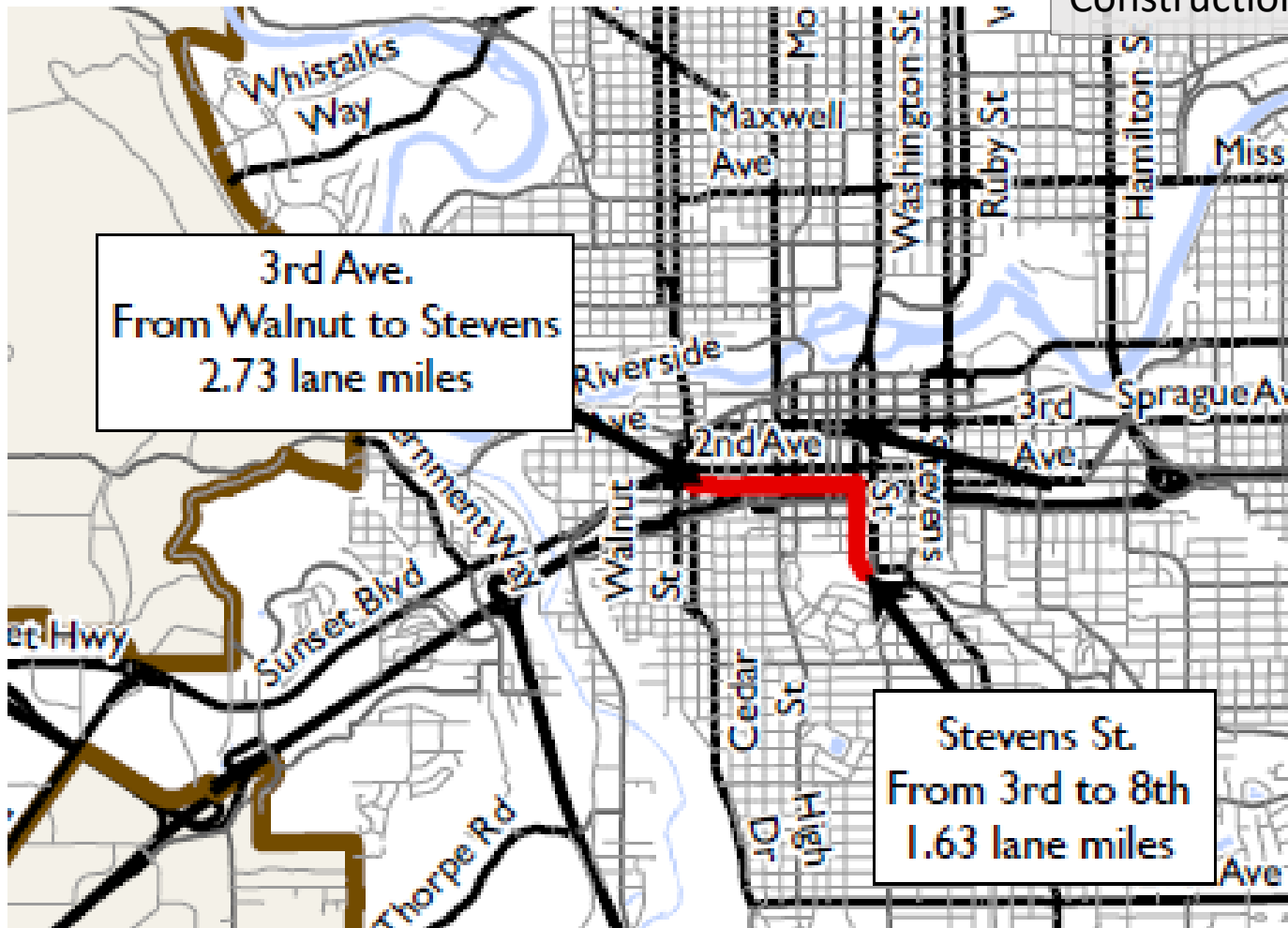
3rd Ave. – Walnut to Stevens & Stevens St. – 3rd Ave. to 8th Ave. Grind & Overlay

Total Project Cost: \$3.7M

Grant Funding: \$3.1M

NHS Asset Mang. - WSDOT/Fed

Construction: 2025 or 26



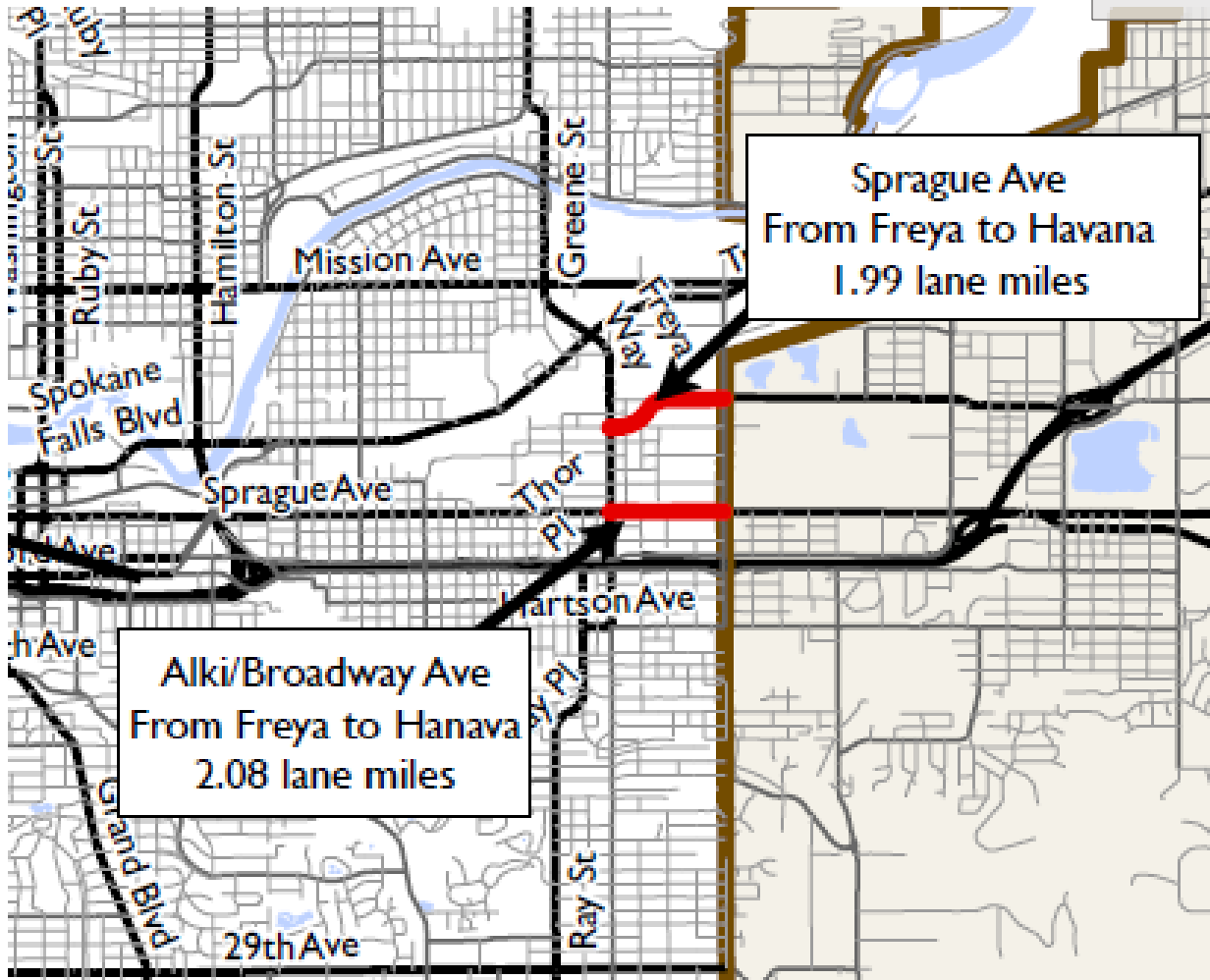
Sprague Ave. – Freya to Havana & Alki/Broadway – Freya to Havana Grind & Overlay

Total Project Cost: \$3.8M

Grant Funding: \$3.2M

NHS Asset Mang. - WSDOT/Fed

Construction: 2025 or 26



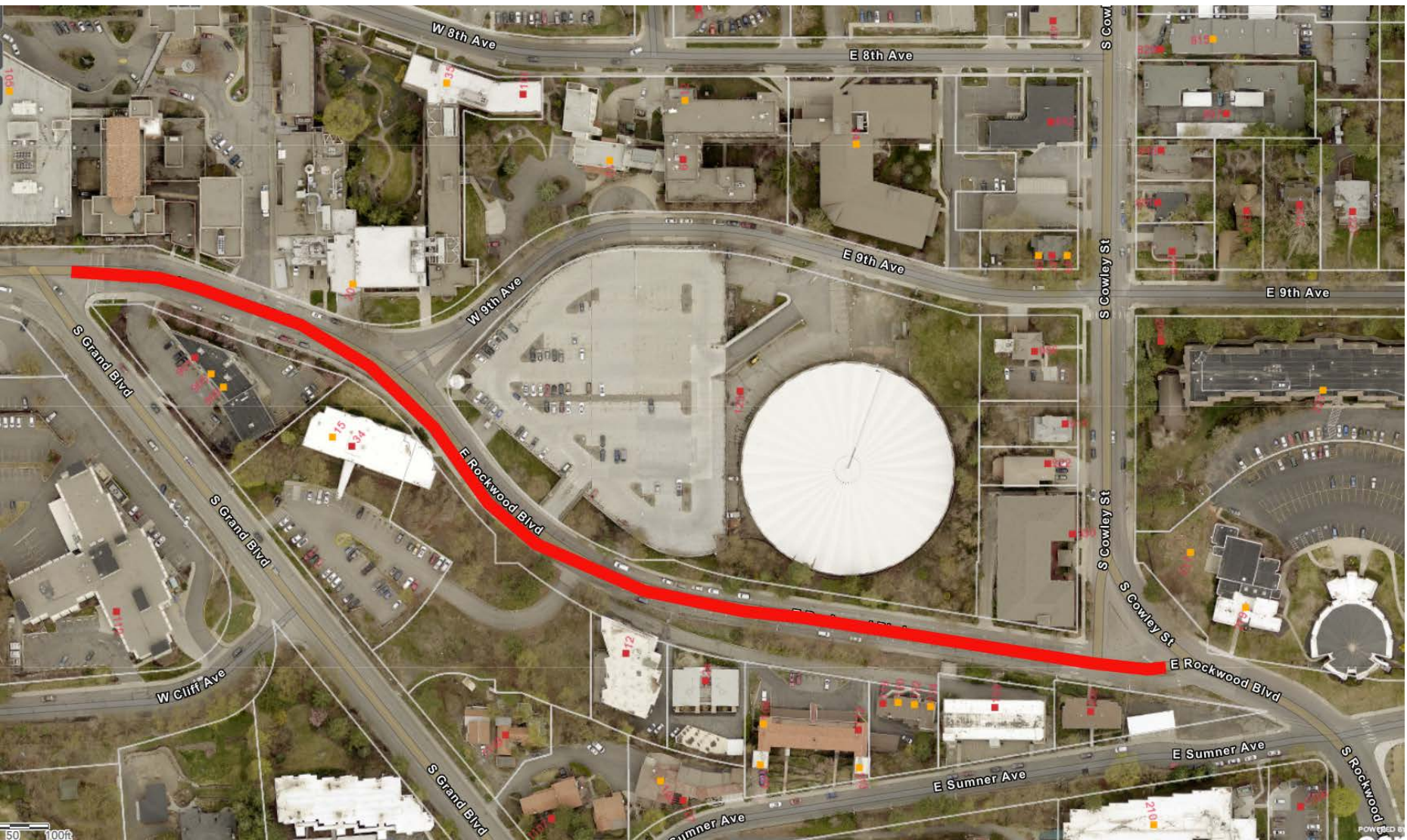
Grandview / 16th / 17th

Total Project Cost: \$900,000
Developer Contribution: \$250,000
Integrated Project w/ City Utilities
Construction: 2026



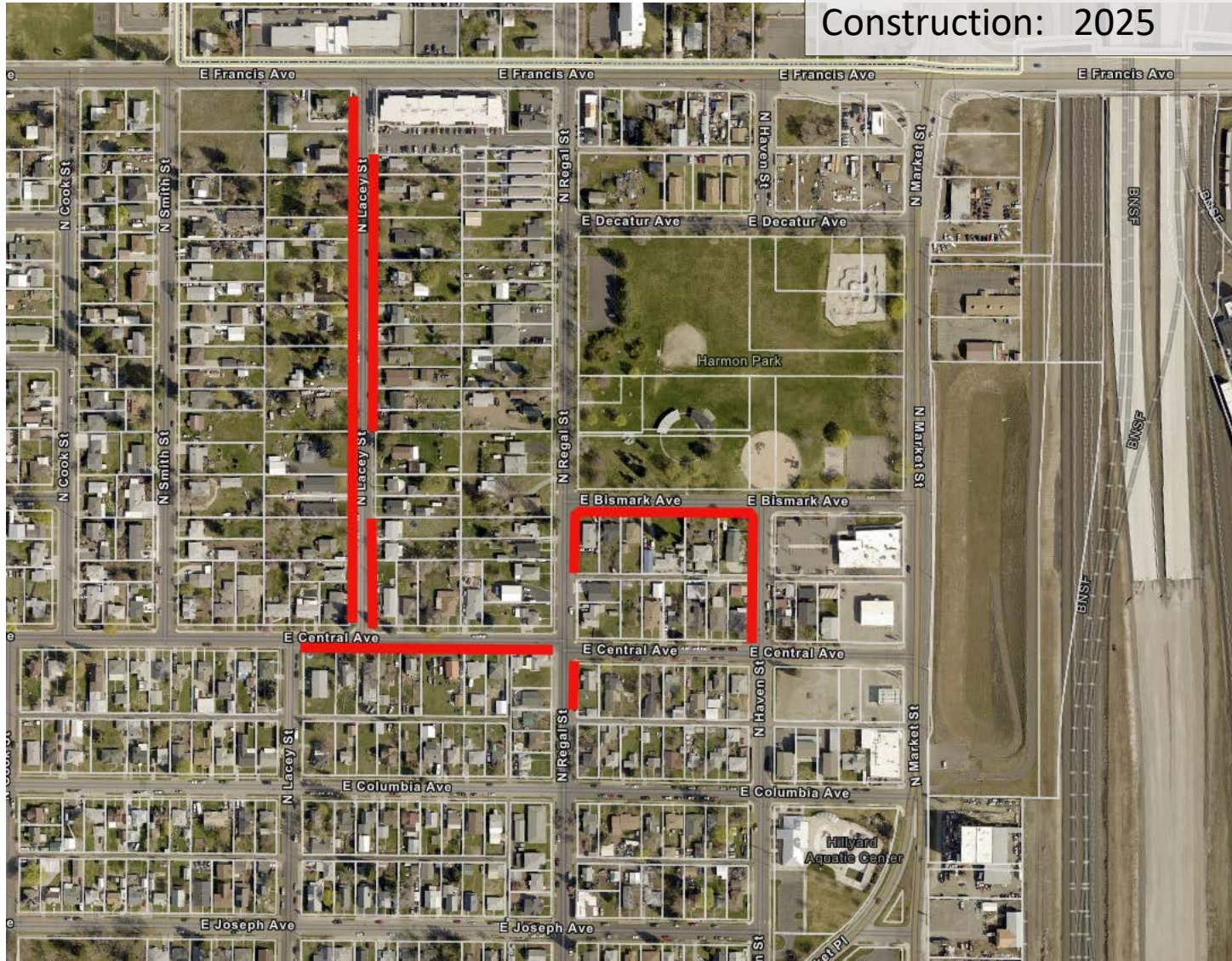
Rockwood Blvd – Grand to Cowley

Total Project Cost: ~\$600,000
Integrated Project – City Utilities
Construction: 2026



Honorable Mention: North Hillyard Sidewalk

Total Project Cost: ~\$900,000
TBD Sidewalk Program
Construction: 2025



**STREET PROGRAM
RECONCILIATION SHEET
New Projects Added to Six-Year
Program (2025-2030)**

	Transportation Network for All Users	Transportation Supporting Land Use	Transportation Level of Service	Transportation Demand Management Strategies	Active Transportation	Commercial Center Access	Neighborhood Access	Moving Freight	Promote Economic Opportunity	Transportation System Efficiency & Innovation	Transit Operational Efficiency	Prioritize and Integrate Investments	Infrastructure Design	Traffic Calming	Activation	Right-Of-Way Maintenance	Paving Existing Unpaved Streets	Parking	Plan Collaboratively	Bicycle/Pedestrian Coordination	Safe & Healthy Community Education & Promotion Campaigns	Law Enforcement & Emergency Management	Effective and Enhanced Public Outreach
Comprehensive Plan Chapter 4 Policies TR:	1	2	3	4	5	6	7	8	9	10	11	12	13	14	15	16	17	18	19	20	21	22	23
Safe Streets for Spokane	X			X	X					X			X	X	X				X	X			X
Bridge Deck Preservation Bundle - Greene, Freya (x2), Havana						X	X	X		X						X			X				X
Wellesley Ave. Chip Seal - Maple to Division.	X	X			X	X	X	X		X						X			X	X			X
Washington / Stevens - 9th to 3rd Grind & Overlay	X	X			X	X	X	X		X						X			X	X			X
3rd Ave. - Monroe to Division Grind & Overlay	X	X			X	X	X	X		X						X			X	X			X
3rd Ave. - Walnut to Stevens; Stevens St. - 8th Ave. to 3rd Ave. Grind & Overlay	X	X			X	X	X	X		X						X			X	X			X
Sprague Ave. - Freya to Havan; Alki/Broadway - Freya to Havana Grind & Overlay	X	X			X	X	X	X		X						X			X	X			X
Grandview / 16th / 17th	X	X			X		X			X		X	X						X	X			X
Rockwood Blvd. - Grand to Cowley Grind & Overlay	X	X			X	X	X			X		X	X			X			X	X			X
North Hillyard Sidewalk Infill	X			X	X					X				X	X				X	X			X

TR 1 Transportation Network For All Users

Design the transportation system to provide a complete transportation network for all users, maximizing innovation, access, choice, and options throughout the four seasons. Users include pedestrians, bicyclists, transit riders, and persons of all abilities, as well as freight, emergency vehicles, and motor vehicle drivers. Guidelines identified in the Complete Streets Ordinance and other adopted plans and ordinances direct that roads and pathways will be designed, operated, and maintained to accommodate and promote safe and convenient travel for all users while acknowledging that not all streets must provide the same type of travel experience. All streets must meet mandated accessibility standards. The network for each mode is outlined in the Master Bike Plan, Pedestrian Master Plan, Spokane Transit's Comprehensive Plan, and the Arterial Street map.

TR 2 Transportation Supporting Land Use

Maintain an interconnected system of facilities that allows travel on multiple routes by multiple modes, balancing access, mobility and place-making functions with consideration and alignment with the existing and planned land use context of each corridor and major street segment.

TR 8 Moving Freight

Identify a freight network that respects needs of businesses as well as neighborhoods. Maintain an appropriate arterial system map that designates a freight network that enhances freight mobility and operational efficiencies, and increases the city's economic health. The needs for delivery and collection of goods at businesses by truck should be incorporated into the freight network, and the national trend of increased deliveries to residences anticipated.

TR 10 Transportation System Efficiency & Innovation

Develop and manage the transportation system to function as efficiently as possible while exploring innovative opportunities and technologies.

TR 12 Prioritize & Integrate Investments

Prioritize investments based on the adopted goals and priorities outlined in the comprehensive plan.

TR 13 Infrastructure Design

Maintain and follow design guidelines (including national guidelines such as MUTCD, NACTO, AASHTO) reflecting best practices that provide for a connected infrastructure designed for our climate and potential emergency management needs, and respecting the local context. Local context may guide signage and elements such as traffic calming, street furniture, bicycle parking, and community spaces. Accessibility guidelines and emergency management needs will be maintained.

TR 3 Transportation Level-Of-Service (LOS)

Set and maintain transportation level of service standards that align desired growth patterns with optimal choices of transportation modes.

TR 4 Transportation Demand Management Strategies (TDM)

Evaluate TDM strategies to optimize transportation options within the context of Complete Streets. Use TDM strategies to gain efficiencies in the transportation system to reduce demand for auto travel.

TR 5 Active Transportation

Identify high-priority active transportation projects to carry on completion/upgrades to the active transportation network.

TR 7 Neighborhood Access

Require developments to have open, accessible, internal multi-modal transportation connections to adjacent properties and streets on all sides.

TR 9 Promote Economic Opportunity

Focus on providing efficient and affordable multi-modal access to jobs, education, and workforce training to promote economic opportunity in the city's designated growth areas, develop "Great Streets" that enhance commerce and attract jobs.

TR 11 Transit Operational Efficiency

Support efficient transit operations through street and transit stop designs on transit priority streets that comply with standards and include transit-supportive elements, such as shelters, lighting, and schedule information. Assist in implementing the STA Comprehensive Plan.

TR 14 Traffic Calming

Use context-sensitive traffic calming measures in neighborhoods to maintain acceptable speeds, manage cut-through traffic, and improve neighborhood safety to reduce traffic impacts and improve quality of life.

TR 16 Right-of-Way Maintenance

Keep facilities within the public rights-of-way well-maintained and clean year-round for the benefit of all while focusing on complete rehabilitation of streets on arterials, and maintenance work on both residential and arterial streets, using an integrated approach that incorporates all uses of the right of way to leverage dollars and gain greater community benefits.

TR 17 Paving Existing Unpaved Streets

Identify and prioritize resources for paving existing dirt and gravel streets and alleyways to reduce air pollution and prioritize infill and economic development.

TR 19 Plan Collaboratively

Work with partner agencies to achieve a regional transportation plan that meets the goals and requirements of the Growth Management Act (GMA) but also reflects the visions and values of the City of Spokane.

TR 20 Bicycle/Pedestrian Coordination

Coordinate bicycle and pedestrian planning to ensure that projects are developed to meet the safety and access needs of all users.

TR 22 Law Enforcement & Emergency Management

Partner with other agencies to bolster enforcement efforts to protect the safety of all users, particularly the most vulnerable, while identifying and addressing emergency management needs

TR 15 Activation

Build great streetscapes and activate public spaces in the right-of-way to promote economic vitality and a sense of place, with a focus on the designated Centers and Corridors identified in the Land Use chapter.

TR 18 Parking

Develop and administer vehicle parking policies that appropriately manage the demand for parking based upon the urban context desired.

TR 21 Safe & Healthy Community Education & Promotion Campaigns

Promote healthy communities by providing a transportation system that protects and improves environmental quality and partner with other agencies to implement innovative and effective measures to improve safety that combine engineering, education, evaluation, and enforcement.

TR 23 Effective and Enhanced Public Outreach

Assess the effect of potential transportation projects on gathering places or destinations such as schools, community centers, businesses, neighborhoods, and other community bodies by consulting with stakeholders and leaders that represent them. These effects are to be mitigated as possible in collaboration with stakeholders.

What's Next ?

- May 8th – Plan Comm. Consistency Review & Hearing
 - Review Projects for Comp Plan Consistency
 - Resolution and Recommendation to Council



The City of Choice



Questions for Today?



The City of Choice



Schedule / Next Steps – *Subject to Change*

- Jan 26 – Council Study Session – Intro
- Feb 14 – Plan Commission Intro
- Feb 29 – Council Study Session #2
- Mar 5 – PCTS Workshop – Comp Plan Consistency Review
- Apr 2 – PCTS Workshop - Consistency Review - Recommendation
- Apr 10 – Plan Comm. Consistency Review Workshop
- **May 8 – Plan Comm. Consistency Review & Hearing**
- May 20 – PIES - Draft Program
- June 3 – Council Briefing – Present Draft Program
- June 17 – Council Hearing for Approval
- Early July – Submit Adopted program to WSDOT and SRTC